

Washington
University
ALUMNI

**TRAVEL
PROGRAM**

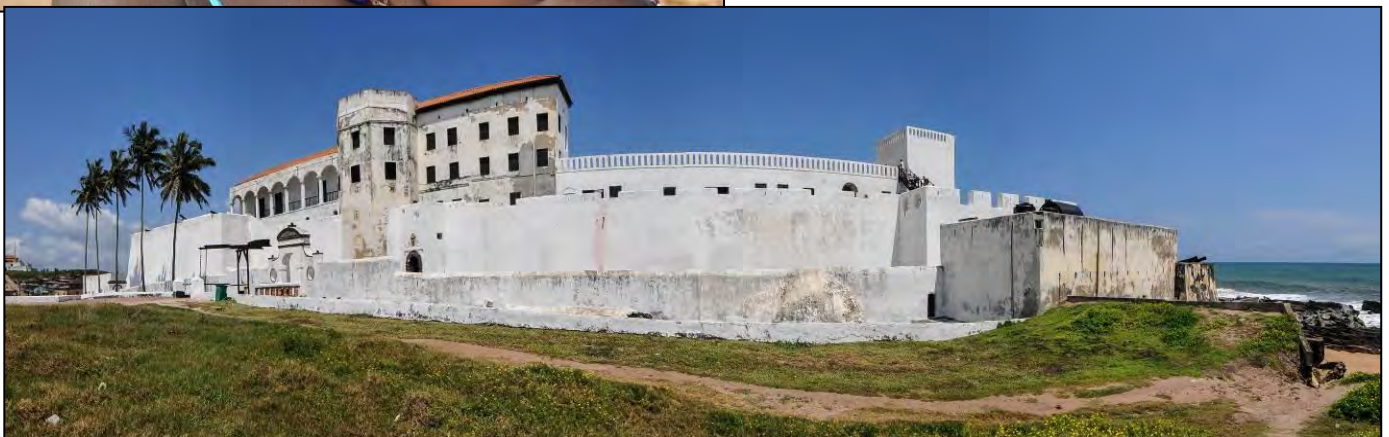

classic
ESCAPES
Nature & Cultural Journeys
for the Discerning Traveler

**YOU ARE CORDIALLY INVITED TO JOIN
WASHINGTON UNIVERSITY IN ST. LOUIS**

**ON A CULTURAL ADVENTURE TO
AFRICA'S GOLD COAST: TOGO & GHANA**

MAGIC, MAJESTY & MASKS

FEBRUARY 24 TO MARCH 6, 2025



191 W Poplar Street, Floral Park, NY 11001
T: (718) 280-5000; (800) 627-1244
F: (718) 204-4726
E: info@classicescapes.com
W: www.classicescapes.com

For more information, find us on:
 facebook.com/Classic.Escapes.inc
 instagram.com/classicescapesinc

A MAP OF YOUR JOURNEY TO AFRICA'S GOLD COAST: TOGO, GHANA & BENIN



YOUR WASHINGTON UNIVERSITY HOST, SHANTI PARIKH

Shanti Parikh, Ph.D., is the chair of and professor in the Department of African and African American Studies, holding a joint appointment in Anthropology and an affiliation with Women, Gender, and Sexuality Studies and the Institute of Public Health. Specializing in global health, gender, and HIV in sub-Saharan Africa, she has published numerous articles and two books, and advises international organizations such as the United Nations and Save the Children. She joined Washington University in 2000 as a postdoctoral fellow after earning her Ph.D. from Yale University in sociocultural Anthropology. She holds a BS in Finance from the University of Virginia's McIntire School of Commerce and was a Small Business Advisor with the U.S. Peace Corps in Kenya.



YOUR ITINERARY

DAY 1~MONDAY~ FEBRUARY 24

USA/EN ROUTE

Today your journey begins as you board your overnight flight to Lomé, Togo. (Meals Aloft)

DAY 2~ TUESDAY~ FEBRUARY 25

LOMÉ, TOGO

Arrive in Lomé where you will be met and transferred to your hotel. The rest of the day will be at leisure.

The luxurious Hotel 2Fevrier is located in Place de l'Indépendance, Lomé's main square. All rooms are equipped with a flat-screen TV, minibar, air conditioning as well as tea and coffeemaker. All units have private en-suite bathrooms with free toiletries. The hotel has an outdoor pool and a gym. Guests can enjoy a buffet and à la carte breakfast served daily at the accommodation. The on-site restaurant offers African, Asian, Chinese, French and Mediterranean cuisine and is open to all guests. Free in-room Wi-Fi is available to all guests, along with a terrace and shopping on site.

Overnight at HOTEL 2 FEVRIER. (No Meals)

<https://2fevrier.com/en/>



DAY 3~ WEDNESDAY~ FEBRUARY 26

LOMÉ~ FETISH MARKET

This morning, you will explore the vibrant capital of Togo, the only African town which has been colonized by the Germans, British, and French. It is also one of the rare capitals in the world that borders another nation. Start in the central market with its famous *Nana Benz* (Nana or Mother, in the Mina language and Benz for the cars they like to drive). The Nana Benz women have dominated the textile industry in Togo since the 1970s. Today their wax prints are coveted by African women around the continent and abroad.



Visit the colonial buildings in the administrative quarter and the largest Fetish Market on the continent, where an eclectic assortment of all the necessary ingredients for love potions and magical concoctions are sold. The market masters will introduce you to some of their homemade "gris-gris," prepared to solve daily life issues. Lomé is an important transit place for tribal art, folk art, modern paintings, and general handicrafts. Return to your hotel where you will have some time to freshen up before dinner.

Optional: in the evening, live music in town if available. A number of musicians in Togo are mixing songs in honor of the Divinities with the energetic Afro-funk, as a consequence of the analogy between the voodoo drumming beats and Blues, Funk, as well as the Rhythm and Blues of James Brown, Otis Redding, Wilson Pickett... and more!

Overnight at HOTEL 2 FEVRIER. (B,L,D)



DAY 4 ~ THURSDAY ~ FEBRUARY 27

LOME ~ VOODOO LAND

All along the coast of Togo and Benin, voodoo is a religion that has been passed on by the ancestors and is still fervently practiced. Although voodoo is considered a vulgar form of black magic, in truth voodoo is a true religion, far richer and more complex than people often think. In a remote hidden village, you will join a Voodoo ceremony. The frenetic rhythm of the drums and chants of the adepts help in calling in the voodoo spirit who then takes possession of some of the dancers.

In another village, you will visit a healer, another special encounter with a person who assists with complex issues by giving solutions based on assessing and treating the patient's spirit. The healer you'll visit cures his patients using plants and the performance of sacrifices on the various shrines in his courtyard. You will have the opportunity to have a conversation with him and meet some of his patients. Overnight at HOTEL 2 FEVRIER. (B,L,D)



DAY 5 ~ FRIDAY ~ FEBRUARY 28

LOMÉ/AKOSOMBO, GHANA

Cross the border into Ghana and head to Krobo, famous around the world for its decorative beads. Here they are produced and used for cult and aesthetic purposes. You will visit a factory specialized in the production of these beads and even follow the process of making one! The craftsmen here have been following the same technique for centuries. They use scrap glass and grind it into a fine powder. The glass powder is then meticulously made into patterns and placed into hand-made clay molds covered in kaolin. You will follow the whole process of production and learn to make your own bead.

Facing the Volta River, your 4-star hotel in Akosombo has rooms that are fitted with a seating area, a flat-screen TV with satellite channels, and a private bathroom with free toiletries and a hot tub. All rooms have air conditioning, and certain rooms include a terrace. Other amenities include an outdoor pool, a gym, and a spa, as well as tennis courts and a playground. Free Wi-Fi is offered.

Overnight at the ROYAL SENCHI RESORT. (B,L,D)

<https://www.theroyalsenchi.com/>

Approximate driving time from Lome to Akosombo: 4 hours



DAY 6 ~ SATURDAY ~ MARCH 1

AKOSOMBO/KUMASI

Today you will cross a region of tropical forest and late in the morning reach Kumasi, the historical and spiritual capital of the old Ashanti Kingdom. The Ashanti people were one of the most powerful nations in Africa until the end of the 19th century when the British annexed Ashanti Country to their Gold Coast colony. The tribute paid today to the Asantehene (King) is the best evidence of their past splendor and strength. With nearly three million inhabitants, Kumasi is a sprawling city with a fantastic central market, one of the biggest in Africa.



Explore the Ashanti Cultural Centre: a rich collection of Ashanti artifacts housed in a reproduction of an Ashanti house. In the afternoon participate, if available, in a traditional Ashanti funeral, attended by mourners wearing red or black togas. Funerals here are a festive celebration: the deceased is believed to be still with his/her family and through this ceremony, they become an ancestor. Relatives and friends gather, socialize, and celebrate the memory of loved ones and the chief arrives surrounded by his court under the shade of large umbrellas while drums give rhythm to the dancers whose intricate moves are highly symbolic.



If available, in the evening, the group will have the option of attending live music in town.

The Lancaster Kumasi City Hotel, formerly known as The Golden Tulip, is located near the Kumasi central market and the Manhyia Palace Museum. The property has a garden with a picnic area and sun terrace. Modest rooms provide free Wi-Fi, flat-screen TVs, and minifridges, a coffeemaker, some featuring private balconies. Other amenities include an outdoor pool with a bar, a fitness center, and tennis courts.

Overnight at the LANCASTER KUMASI CITY HOTEL. (B,L,D)

<https://lancasterkumasicity.com/>

Approximate driving time from Akosombo to Kumasi:5 hours

DAY 7 ~ SUNDAY ~ MARCH 2 KUMASI ~ GOLDEN KINGDOM

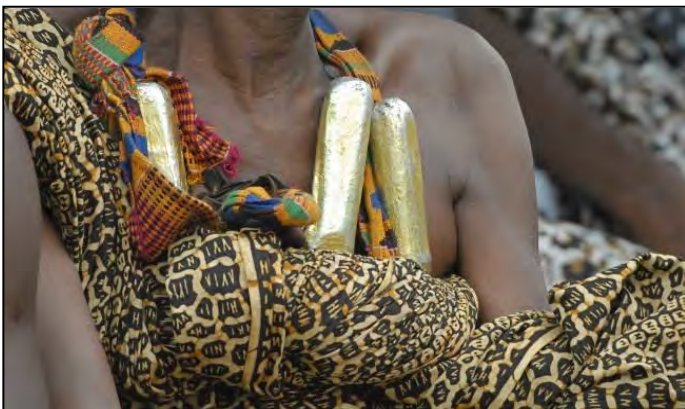
In the morning, visit the Royal Palace Museum to view the unique collection of gold and jewels worn by the Ashanti court.

Take part in a spectacular Akwasidae festival attended by the king and his court. During the celebration, the King sits beneath a colorful umbrella adorned in vivid cloth and ancient jewelry (*Ashanti gold jewelry is considered masterpieces of African art*), surrounded by dignitaries and elders, and on the side of the King sits the Linguist holding the golden symbols of power.



The ceremony begins with a procession: attendants bringing gifts, storytellers reciting the deeds of past kings, drummers, ivory trumpet players, sword bearers, armed guards, high fetish priests, and corpulent women dressed in vivid red, performing dances with erotic symbolism.

Overnight at the LANCASTER KUMASI CITY HOTEL. (B,L,D)



DAY 8~ MONDAY~ MARCH 3

KUMASI/ELMINA

Drive to Elmina on the coast of Ghana, where you will have the opportunity to visit many castles, dungeons, and view relics of the ancient gold, ivory, and slave traders. In 1482 Christopher Columbus and Bartolomeu Diaz arrived with ten caravels to build a castle under Portuguese authority. The Castle of Sao Jorge da Mina is rich in history and has been controlled by Portugal, Holland, the United Kingdom, and now Ghana. The castle has been used as a warehouse to trade gold, ivory, and eventually slaves, trading with Europe and the Americas for more than five centuries, long before the start of colonial rule. What you'll visit today is the outcome of successive expansions. It is recognized as a UNESCO World Heritage site.



Facing the castle and the ocean is a unique fishing harbor with hundreds of large colorful canoes that every day defy the waves and currents to reach the fertile sea. In the old town with its vivid atmosphere discover the Posuban shrines of the "Asafo companies." These elaborate concrete shrines decorated with fanciful statues honor the great deeds of past warriors. The atmosphere in the ancient alleys harkens back to a time when Elmina was a busy Atlantic trade citadel.



Located by the ocean in Elmina, Coconut Grove Beach Resort is just a four-minute drive from Elmina Castle and six minutes from Fort St. Jago. The resort has 73 rooms with private bathrooms with showers and complimentary toiletries. Conveniences include phones, as well as coffee/tea makers and complimentary bottled water. Other amenities include two outdoor tennis courts, a restaurant, and two bars/lounges. Complimentary wireless Internet access keeps you connected, and satellite programming is available for your entertainment. Overnight at the COCONUT GROVE HOTEL. (B,L,D) <https://coconutgrovehotelsghana.com/beachhotel/> Approximate driving time from Kumasi to Elmina: 5 hours

DAY 9 ~ TUESDAY~ MARCH 4

KAKUM NATIONAL PARK/CAPE COAST CASTLE/ACCRA

A few miles north of the coast, in the middle of a rainforest, discover the Kakum National Park. Observe the forest from above on a canopy-walk high above the forest floor. The Kakum canopy walkway is the longest and highest rope bridge in the world. At this height, instead of revealing their trunks, the trees offer a breathtaking view of their canopies.



Drive back to the coast and visit Cape Coast Castle, built by the Swedish in 1653. From 1657 to 1664 it changed hands many times as it was conquered by the Danes, the Dutch, the Fanti (*a local tribe*), the Swedes, and finally the British. Today, it hosts a museum on the history of the slave trade.

Visit Fort William and its 19th-century lighthouse. Then drive to Accra, the capital of Ghana, and enjoy the night at leisure.

Set amidst landscaped gardens, this premier 5-star hotel is Accra's best and is located adjacent to Ghana's most popular La Pleasure Beach, with a private beach of its own. The hotel offers a modern Spa, a well-equipped gym, a pool, a tennis court, and outdoor running space. Your room, one of 164 well-appointed rooms and suites, enjoys all amenities such as a hairdryer, coffee-making facility, minibar, high-speed internet, bathrobe, and slippers, and has an en-suite bathroom and 40" flat screen LED TV. There are several bars and restaurants, one overlooking the pool, another the lagoon or the Atlantic Ocean, and the Akwaaba Buffet Restaurant. You're sure to enjoy this lovely hotel during your stay in Accra.

Overnight at the LABADI BEACH HOTEL. (B,L,D)

<https://labadibeachhotelgh.com/>

Approximate driving time from Elmina to Accra: 5 hours



DAY 10 ~ WEDNESDAY ~ MARCH 5

ACCRA ~ CITY TOUR/EN ROUTE

In the morning, explore Jamestown's historic neighborhood, inhabited by the Ga people. Facing the ocean, this bustling village, surrounded by the city, is where the daily life of local people fully unfolds. Here economic activities follow very different rules from those governing the city just a few hundred feet away.

Continue your tour with a visit to a workshop that specializes in Fantasy Coffins, unique handcrafted coffins built to reflect any shape: fruits, animals, fish, cars, airplanes, etc., the only limit being imagination!



Accra is the setting of the popular African television program "An African City," which is described as similar to "Sex and the City," making it an ideal place to stroll around and browse the design and clothes shops and possibly meet with some of the designers.

A dayroom will be provided at the LABADI BEACH HOTEL. Later, transfer to the airport for your overnight flight back to the USA. (B,L, Meals Aloft)

DAY 11 ~ THURSDAY ~ MARCH 6

USA

Arrive back home today bringing with you fond memories of the rich culture and beautiful landscapes of West Africa.



OPTIONAL PRE-EXTENSION TO BENIN

DAY 1~THURSDAY~ FEBRUARY 20

USA/EN ROUTE

Today your journey begins as you board your overnight flight to Cotonou, Benin. (Meals Aloft)

DAY 2 ~ FRIDAY~ FEBRUARY 21

COTONOU, BENIN

Arrive in Cotonou where you are met and escorted to your home for the evening, Maison Rouge. Check in and enjoy time to relax after your long flight.

The 4-star contemporary Maison Rouge in Cotonou features views of the Gulf of Guinea and is close to local points of interest such as Fidjrosse Beach, Artisanal Center, and Cotonou Central Mosque. All rooms are en suite and come with free Wi-Fi, flat-screen TVs, air conditioning, and minibars. There is an international restaurant with an outdoor dining area, plus a garden with a pool. Other amenities include a gym and a hot tub.

Overnight at the MAISON ROUGE. (No Meals) <http://hotel-benin-maison-rouge-cotonou.com/>



DAY 3 ~ SATURDAY~ FEBRUARY 22

COTONOU~ LAKE NOKOUE

This morning you will cross Lake Nokoue in a motorized boat to reach Ganvie, the largest stilt village in Africa.

Approximately 25,000 inhabitants of the Tofinou ethnic group build their huts on teak stilts and cover the roofs with thick layers of leaves. This village has managed to preserve its traditions and environment in the modern era with daily life that unfolds each day around the canoes that men, women, and children guide with brightly colored poles.

Back in Cotonou, visit the Zinsou Foundation, the first private Beninese foundation dedicated to exhibiting contemporary African art, which was created in June 2005. Starting as a family initiative, the Zinsou Foundation remains deeply involved in cultural and social activities. Enjoy a welcome dinner tonight with your group.

Overnight at the MAISON ROUGE. (B,L,D)



DAY 4~ SUNDAY~ FEBRUARY 23

COTONOU/KETOU ~DANCING MASKS

Head to Ketou, the capital of the ancient Yoruba Kingdom, which still controls the border region of Benin and Nigeria. Your group will be introduced to the royal palace and received by the Oba (King). You will have the opportunity to ask His Majesty about the history of his kingdom and royal life today.

Next, attend the incredible Gelede & Egun masks dances. The word "Gelede" can refer to the so-named cult, its associated, secret society, and its distinct mask. Gelede performances use each mask to represent a character, often humorous or ironic.



This theatrical aspect of the masks mimicking short stories has the function of educating, not simply entertaining the village. Gelede masks have feminine features but are worn by men dressed as women and performing incredible dances. Colors dominate the scene with the masked dancers dressed in colorful clothes encouraging onlookers to participate. Settle in for remarkable entertainment, which some describe as a mix of street theatre and magical theatre.

Your home tonight is in the outer area of Ketou, a mid-size town and one of the oldest capitals of the Yoruba-speaking people. The rooms are clean and well maintained, equipped with AC, TV (French only), and toilet/shower. Wi-Fi is available as well. Guests can enjoy the on-site restaurant serving mostly European food, like steak, pork, and fish.

Overnight at the RESIDENCE CELINE. (B,L,D)

DAY 5~ MONDAY~ FEBRUARY 24

KETOU/OUIDAH

Venture off to Ouidah, the birthplace of voodoo worship, and prepare for a display of Egun mask theater - each mask believed to hold the spirit of the dead. The masks perform a kind of bullfight that is designed to create fear and respect. The men wearing the masks representing Egun are initiates of the cult. Dressed in brightly multicolored clothing they emerge from the forest and form a procession through the village streets, leaping toward any foolish spectator who dares to get too close. You do not want the Egun to touch you because if he does, there is a danger of death, so watch out! Some people touched by the Egun immediately collapse to the ground feigning death but fortunately, they recover quickly.



Next, visit Abomey Royal Palace, a museum, and UNESCO World Heritage site. Exploring the palace will conjure visions of its past splendor. The walls of the palace are decorated with bas-reliefs representing symbols of the ancient Dahomey kings. The museum displays items belonging to the ancient kings: thrones, cult altars, statues, costumes, and weapons. The Kingdom's economy was for a long time based on the slave trade: a permanent state of war made it possible for the kings to capture thousands of prisoners whom they sold as slaves. The royal army also included a female troop famous for its boldness and aggressive fighting spirit. In the middle of the royal courtyard, there is a temple built with a mixture of clay, gold dust, and human blood. At the height of their power, there were up to 4,000 women in the palace harem. A walk around the buildings helps the visitor to recall the past splendor of a court that proudly challenged the powerful armies that came to colonize the continent.



Drive back to the coast and your home for the next two nights.

Drive back to the coast and your home for the next two nights.

The lovely Casa del Papa Resort in Ouidah has 68 rooms equipped with modern amenities. All rooms have ensuite bathrooms with showers and complimentary toiletries. Other amenities include hairdryers and flat-screen TVs with satellite channels. This Ouidah hotel provides complimentary wireless Internet access and free Wi-Fi in public areas. Recreational amenities at the hotel include an outdoor pool.

Overnight at the HOTEL CASA DEL PAPA. (B,L,D)

<https://www.casadelpapa.com/en>

Approximate driving time from Ketou to Ouidah: 4 hours



DAY 6~ TUESDAY~ FEBRUARY 25

OUIDAH, AFRO BRAZILIAN CITY

Ouidah is considered the capital town of African Voodoo, distinct for its Afro-Brazilian architecture and its Python Temple which faces the Catholic Cathedral. Ouidah was conquered by the Dahomey army during the 18th century and became one of the main slave ports. The laid-back attitude of the community blends harmoniously with the thunder of the distant waves and the rhythm of the drums: a timeless atmosphere described by Bruce Chatwin in his book *The Vice-Roy of Ouidah*. On foot you will visit the Python Temple and the Portuguese Fort, now a museum on the history of Ouidah and the slave trade.



Stop by the Villa Ajavon, a symbol of the urban, economic, and social transformation of Ouidah after the abolition of slavery. The city tour wraps up along the “slave road” to the beach, the point of “no return” where slaves were boarded onto ships and set sail.

Afterward travel to Lomé to meet up with the rest of the group arriving from US this evening. (B,L,D)

Approximate driving time from Quida to Lome: 4 hours



OPTIONAL POST-EXTENSION TO MOLE NATIONAL PARK, GHANA



DAY 10 ~ WEDNESDAY ~ MARCH 5

ACCRA

Bid farewell to the rest of the group returning to the USA tonight and enjoy an afternoon at leisure, as you get ready for your next adventure.

Overnight at the LABADI BEACH HOTEL. (B,L)

DAY 11 ~ THURSDAY ~ MARCH 6

ACCRA/TAMALE/MOLE NATIONAL PARK

Get an early start this morning as you board your flight to Tamale, where you transfer to Mole National Park and your home for the next three nights, Zaina Lodge.

Zaina Lodge is located within Mole National Park, the largest and most visited National Park in Northern Ghana. Split over three levels and strategically perched above two busy watering holes, the lodge's unique position and raised vantage point provide views of the seemingly endless savannah. The waterholes are frequently visited by animals such as elephants, waterbucks, kobs, bushbucks, warthogs, water buffalo, hyenas, and baboons. The lodge is built in the traditional Sudanic-Sahelian style, and the interior décor is influenced by distinctive shades typical of Northern Ghana.

All 25 luxury tented chalets have private balconies. There are indoor showers, as well as outdoor showers for those who like to bathe under the stars. The air-conditioned luxury tent also has a TV and a seating area. Free Wi-Fi is available in public areas. You can also relax at the infinity pool, outdoor bar, fire pit, or restaurant. Guests can indulge in a pampering treatment at the lodge's full-service spa. Zaina's restaurant has an interesting menu, offering guests the opportunity to try local dishes including favorites such as Waakye, Jollof rice, and even guinea fowl. All dishes are creatively plated and served with a contemporary twist.

Overnight at ZAINA LODGE. (B,L,D) <http://zainalodge-ghana.com/>

DAYS 12/13 ~ FRIDAY/SATURDAY ~ MARCH 7/8
MOLE NATIONAL PARK

Enjoy the wild side of West Africa with a visit to Mole National Park, Ghana's largest wildlife refuge. These sprawling grasslands are home to over 93 mammal species - including elephant, hippo, buffalo, and warthog and are considered a primary African reserve for antelope species such as kob, Defassa waterbuck, roan, hartebeest, oribi, bushbuck, red duiker, and yellow-backed duiker. Sightings of hyena, lion, and leopard are unusual but possible. Olive baboons, black-and-white colobus, green vervet, and pata monkeys are resident species and are always a delight to watch. Among the 33 known species of reptiles recorded, it is worth mentioning the slender-snouted and dwarf crocodile.



A whopping 344 bird species provide very good chances to spot: Martial Eagle, White-headed and Palm-nut Vultures, Saddle-billed Stork, heron, egret, Abyssinian Rollers, Violet Turac, and Red-throated Bee-eater. Enjoy two guided safaris, early in the morning and late in the afternoon when animals are more active. Overnights at ZAINA LODGE. (B,L,D Daily)

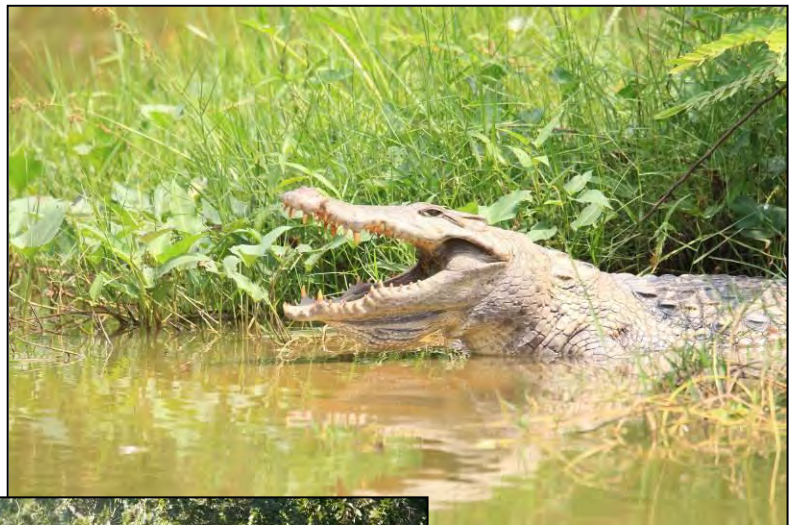


Schedules, accommodations and prices are accurate at the time of writing. They are subject to change.



DAYS 13/14 ~ SUNDAY/MONDAY ~ MARCH 9/10
MOLE NATIONAL PARK/TAMALE/ACCRA/NEW YORK

Transfer back to Tamale and board your flight back to Accra. Your safari in Ghana concludes with a drop-off at the airport for your flight home, arriving the next day.



THINGS YOU NEED TO KNOW ABOUT BENIN, TOGO & GHANA

Participants:

- Must be able to climb in and out of, as well as move around in confined quarters within minibuses unassisted. People need to be willing to rotate seats.
- Must be able to tolerate riding on uncomfortably uneven, bumpy roads (some with many potholes) for long periods of time (6-9 hours maximum), as well as some off-road experiences when opportunities allow.
- Must be able to stand and/or walk moderate distances when visiting villages, towns, or other sites. This walking will be on uneven ground or uphill.
- Should generally be in good health and prepared to travel in locations without medical facilities.

In general, this trip requires:

- Flexibility and good humor – unexpected changes and/or glitches will occur.
- A spirit of adventure and curiosity.
- Interest in and willingness to appreciate a destination with a modest infrastructure and a bending definition of comfort.

Air Schedules

The cost of your program does not include international airfare. If you require assistance, please contact Classic Escapes at 718-280-5002 and we will happily provide air quotes to you. You may make your own international air arrangements, but please ensure you arrive/depart on the correct dates. Contact your Journey Manager at Classic Escapes to verify the dates to ensure there are no errors. **The start city for this program is Lome, Togo, and departure is Accra, Ghana. The pre-extension begins in Cotonou, Benin.**

Upon registration, you must provide your full legal name as it appears on your passport. In the event we issue an airline ticket with incorrect information you have provided to us, you will be responsible for charges associated with reissuing the ticket.



INCLUSIONS

- Flight between Accra/Tamale/Accra on the post extension.
- Services of English-speaking guide throughout the tour.
- Transfers in air-conditioned minibus.
- All meals as specified on itinerary.
- All tours/ excursions.
- Porterage.
- Mineral water in the bus/car during visits and at meals.
- A host from Washington University in St. Louis will accompany the group with a minimum of 10 travelers on the main and on either-extensions.
- Entrance fees to parks, concessions, protected areas, and cultural sites.
- Complimentary baggage tags and water bottle.

EXCLUSIONS

- Round trip air transportation between the U.S. and West Africa. If you require assistance with air arrangements, contact Classic Escapes.
- Fees for personal photos and videos.
- Fee for optional music events.
- Passport and visa fees and service charges for obtaining visas. Currently, US citizens require a visa for traveling to Benin, Togo, and Ghana.
- Gratuities to drivers/guides and other conveyance attendants. *Gratuities should only be given as a reward for exceptional service and is at your discretion. We estimate \$15 per person/per day for the specialist guide. \$10 per person/per day for the driver. \$5 per person for each arrival and departure transfer from the airport/hotel. These are daily per service estimates and an exact tipping chart will be detailed on your final itinerary.*
- Excess baggage charges levied by airlines.
- Meals and beverages, other than specified.
- Mineral water and drinks at meals
- Laundry and other items of a personal nature.
- Personal and baggage insurance.
- Cost for anything not specifically mentioned in the listing above.

Please Note That The Itinerary Sequence Is Correct At The Time Of Writing, But Is Subject To Change.



YOUR JOURNEY AT A GLANCE

INCLUDING: MAIN TOUR: COTONOU, LAKE NOKOUE, KETOU, OUIDAH, IN BENIN; LOME, AKOSOMBO IN TOGO; KUMASI, ELMINA & ACCRA IN GHANA. POST EXTENSION TO MOLE NATIONAL PARK

SPONSORED BY: WASHINGTON UNIVERSITY IN ST. LOUIS

ESCORTED BY: A HOST FROM WASHINGTON UNIVERSITY IN ST. LOUIS

DATES: FEBRUARY 24 TO MARCH 6, 2025

COSTS: PER PERSON, BASED ON DOUBLE OCCUPANCY	MAIN PROGRAM BASED ON 10	PRE- EXTENSION TO BENIN BASED ON 10 TRAVELERS	POST EXTENSION TO MOLE NATIONAL PARK BASED ON 10 TRAVELERS
LAND ONLY	\$7,995 PER PERSON	\$2,995 PER PERSON	\$4,695 PER PERSON
SINGLE ROOM SUPPLEMENT, ADDITIONAL*	\$2,295 PER PERSON ADDITIONAL	\$795 PER PERSON ADDITIONAL	\$1,795 PER PERSON ADDITIONAL

**SINGLE SUPPLEMENT: RATES ARE VALID FOR FIRST TWO SINGLE ROOMS BOOKED. IF MORE THAN TWO SINGLE ROOMS, ADDITIONAL SUPPLEMENT WILL APPLY. SINGLES ARE ASSIGNED ON A FIRST COME/FIRST SERVE BASIS.*

INTERNATIONAL AIR ARRANGEMENTS: The cost of your program does not include international airfare. If you require assistance, please contact Classic Escapes at 718-280-5002 and we will happily provide air quotes to you. You may make your own international air arrangements, but please ensure you arrive/ depart on the correct dates. Contact your Journey Manager at Classic Escapes to verify the dates to ensure there are no errors. **The start city for this program is Lome, Togo, and departure is Accra, Ghana. The pre-extension begins in Cotonou, Benin.**



CONDITIONS OF TRAVEL:

The purchase of your travel booking constitutes a contractual agreement between the traveler(s), customer(s), and/or purchaser(s) (collectively as "You" and "Traveler"), and Classic Escapes ("Classic Escapes", "We", "Us") pursuant to the following terms and conditions ("Terms", "Agreement"):

REGISTRATION & PAYMENTS

HOW TO BOOK: Fill out and sign the enclosed reservation form and send it, along with the relevant deposit as shown below, to CLASSIC ESCAPES, 191 W Poplar Street, Floral Park, NY 11001. Upon receipt of your signed reservation form and deposit, we will, subject to availability, reserve your spot on the tour. You may consider your booking confirmed when you receive a confirmation notice and invoice from us

DEPOSIT AND FINAL PAYMENT: You will be required to pay the following per person deposits when booking. Those amounts are:

- \$1,600 for the main trip
- \$600 for the pre-extension
- \$900 for the post extension

All deposits are subject to the Cancellation policy herein. Final payment is required no less than 95 days prior to (November 21, 2024) unless otherwise stated. Some airfares or services must be paid in full at the time of booking. Deposits may be paid by check or with credit card (American Express, Visa, MasterCard, or Discover). Final payment is payable by check, wire transfer, or money order ONLY. Conditioned on receipt of final payment in full, all final documents and air tickets will be sent to you approximately two weeks prior to departure.

CREDIT CARD TRANSACTIONS: If for any reason, any travel service provider is unable to provide the services for which you have contracted, your remedy lies against the provider, and not against Classic Escapes, and in the event that payment has been made to Classic Escapes by credit card, you agree that you will not seek to chargeback your payment to Classic Escapes. If the credit card is passed through to the travel service provider and you seek to chargeback your payment from the provider, you agree to be held liable and indemnify Classic Escapes against this chargeback from the provider, including without limitation any air debit memos charged to Classic Escapes. If the credit card is declined, you guarantee that you will settle any amounts owing to Classic Escapes via money order or cash immediately. Except in cases of fraud, you agree not to file any dispute with your bank or credit card company to avoid or violate any booking terms and conditions of Classic Escapes or its suppliers, including cancellations or changes of itinerary or arrangements for reasons beyond the control of Classic Escapes or its suppliers. If you attempt to chargeback, reverse or recollect a previously authorized trip payment, Classic Escapes reserves the right to collect all additional costs, fees and expenses associated with such chargeback, reversal or recollection, including, without limitation, attorney fees.

IMPORTANT CONDITIONS: Prices are subject to increase prior to the time you make full payment. Prices are not subject to increase after you make full payment, except for charges resulting from increases in government-imposed taxes or fees. By signing the reservation form, you expressly acknowledge your acceptance of these conditions (i.e., increases before full payment and increases attributable to government-imposed taxes or fees after full payment will be your responsibility) applicable to your purchase.

RATES: Rates are based on the minimum number of guests outlined in this document, plus airfare costs, currency exchange rates and other factors and are subject to change. Though it is rare for Classic Escapes to make a price adjustment after promotion of an itinerary, we do reserve the right to assess a surcharge if the minimum is not met, or if increases are forced upon us by airlines or other partners or because of changes in currency exchange rates.

ADDITIONAL FEES: Additional taxes and surcharges that cannot be pre-collected may be charged locally. Cost of passport and visa fees and service charges for obtaining visa fees; excess baggage charges levied by airlines; laundry and other items of personal nature; optional travel insurance policy(s); or any other costs incurred that cannot be pre-collected are NOT included and are the sole responsibility of the Traveler.

SINGLE SUPPLEMENT: The quoted rate is valid for the first two single rooms booked and on a first-come, first-served basis. If more than two single rooms are needed, an additional supplement may apply. Single accommodations are not guaranteed but will be provided at additional cost if available (see your "Journey at a Glance section" for cost.) The single room supplement pays for privacy, not better accommodations. For passengers who are traveling alone and wish to share a room with another tour member, we will do our best to provide a roommate. However, if this is not possible, you will be required to pay the single room supplement prior to your departure from the USA.



GRATUITIES, ENTRANCE FEES & TAXES: Gratuities for baggage handling, service charges and taxes imposed by hotels, and entrance fees to all points of interest as outlined in the itinerary are included in the final cost. U.S. and foreign airport taxes are included in air costs. Tips to drivers and specialist guide(s) are not included and are the sole responsibility of the Traveler.

CANCELLATIONS, DEVIATIONS & CHANGES

TRAVEL INSURANCE: We recommend travel insurance. Travel insurance can provide financial reimbursement should the unexpected occur.

CANCELLATION: Please be aware that most travel bookings are non-refundable and cancelled bookings will incur charges. These charges can be up to 100% of the cost of the booking, regardless of whether travel has commenced. Where we incur any liability for a cancellation fee or charge for any booking that you cancel, you agree to indemnify us for the amount of that fee or charge. Cancellations are only effective upon receipt of written notification. The following per-person fees are applicable; however, depending on the specific itinerary or other factors, we may require a non-refundable deposit:

- Up to 6 months prior to departure (August 28, 2024), \$300 per person administrative fee.
- 179 days to 96 days prior to departure (August 29 to November 20, 2024), \$300 per person administrative fee, plus \$500 non-refundable deposits given to suppliers.
- 95 days to 76 days prior to departure (November 21 to December 10, 2024), deposit is forfeited.
- 75 days to 60 days prior to departure (December 11 to December 26, 2024), 50% refund is possible.
- 59 days or less prior to departure (December 27, 2024), no refund is possible.

These cancellation fees are also in addition to any fees imposed by airlines.

REFUNDS: While Classic Escapes uses its best endeavors to ensure that all anticipated accommodation is available as planned, there is no claim of any nature whatsoever against Classic Escapes for a refund, in whole or in part, if any accommodation or excursion is unavailable and a reasonable alternative is not found, or if the Traveler is unable to use any service provided in the itinerary.

CHANGES: Once your tour is reserved, changes to the itinerary are possible subject to the availability of air or land space at the time of your request. Should there be any change fees imposed by any airlines or ground operators, or additional costs incurred due to the availability of any space, these costs will be invoiced to you, and you will be responsible for payment thereof.

SPECIAL ARRANGEMENTS: Should you wish to make additional travel plans, including specially arranged pre- or post-tour extensions different than those offered in conjunction with your tour, a service charge of \$150 per person (over and above the cost of the services required) will be assessed.

DOCUMENTS

PASSPORTS: All individuals departing from the United States of America must be in possession of a valid passport. Please check that your passport is valid for at least 6 months beyond your intended return date. It is your responsibility to ensure that you have valid travel documentation, including but not limited to passports and visas, which meet the requirements of immigration and other government authorities at every destination. You are responsible for confirming with the United States Department of State or the representative government agency of the country to which you are traveling to confirm the requirements for visas and/or other requirements for admission to your destination. Any fines, penalties, payments, or expenditures incurred as a result of such documents not meeting the requirements of those authorities will be your sole responsibility.

REAL ID: Beginning October 1, 2021, if you plan to use your state-issued ID or license to fly within the U.S., it is your responsibility to make sure it is REAL ID compliant. If you are not sure if your ID complies, please check with your local state Department of Motor Vehicles or visit www.tsa.gov/real-id.

TRAVEL DOCUMENTS: It is the responsibility of each Traveler to obtain and carry a valid passport, visa(s), and all other documents required by applicable government regulations. When traveling domestically or internationally, the U.S. Transportation Security Administration (TSA) and U.S. Department of Homeland Security (DHS) advise that everyone carry acceptable identification in order to board a flight. Acceptable identification can be found at <http://www.tsa.gov/traveler-information/acceptable-ids>. The name, date of birth and gender that appears on the identification card must exactly match the same such data that is listed on airline ticket(s) and booking records. You acknowledge any failure to strictly comply with these requirements may result in denied boarding or an undue delay at an airport security checkpoint causing Traveler to miss flight(s), and subsequent scheduled travel bookings on cruises and tours.



Travel documents include, without limitation, airline tickets, hotel vouchers, tour vouchers, or any other document (whether in electronic form or otherwise) used to confirm an arrangement with a service provider. Travel documents may be subject to certain conditions and/or restrictions such as, but not limited to, being non-refundable, non-date-changeable, and subject to cancellation and/or amendment fees. Travel documents cannot be transferred to another person to use. All airline tickets must be issued in the name of the passport/photo identity holder. An incorrect name on a booking may result in an inability to use that booking and the booking being cancelled. Any errors in names, dates, and timings may result in an inability to use that booking and the booking being cancelled. Any errors in names, dates, and timings on your documentation will be your responsibility if we are not advised at the time of booking. Please reconfirm your flights at least 24 hours prior to departure.

PRE-DEPARTURE INFORMATION: Upon receipt of your registration and deposit, we will send you an electronic pre-departure packet containing all the information you need to prepare for your tour, including the complete itinerary, packing checklist, required documents, insurance information, etc.

FINAL DOCUMENTS: Electronic final documents and air e-tickets will be sent to you approximately two weeks prior to departure, provided all monies have been paid in full.

TRANSPORTATION

AIR TRANSPORTATION: Your program offers the ability to purchase at additional cost roundtrip, economy-class flights between (ST. LOUIS.), and the destination city noted in the itinerary. Rates are based on special promotional fares; cancellation fees apply once tickets are issued. Departures from other cities in the USA are possible at additional cost; inquire at the time of reservation. Please note that these promotional fares are subject to 10 passengers traveling together on the same airline routing and itinerary. If this minimum is not met, the special group rates are not applicable, and it might become necessary to issue instant purchase tickets earlier than when final payment is due in order to take advantage of airfares that are similar to the group rates. Should this occur, you will be contacted with the details.

AIRLINE SEATING: We request seats together for the group wherever possible. All planes are non-smoking. We can request a seating preference on your behalf, however requested seats cannot be guaranteed. Requests should be made in writing no later than 60 days prior to departure. Bulkhead and/or emergency row seats can only be requested at airport check-in on the day of departure. Classic Escapes cannot provide the **Comfort Seating Service** as this is available on specific flights subject to availability and commercial laws as determined by each airline and at their own discretion. Boarding passes are generally issued at the airport on the day of departure, or in some cases if you pre-check yourself 24 hours prior to departure. You may inquire about seat changes during check in at the airport, based on availability and is at the sole discretion of airline staff.

FREQUENT FLYER MILEAGE: Check on the airline's website to enquire who their partners are. Obtain frequent flyer mileage on any of these carriers. Present your frequent flyer card for all flight check-ins and keep the boarding passes until you receive a statement with the mileage credit.

TRANSFERS: Roundtrip airport transfers are included in the tour for guests arriving on group flights. If travelers make their own air arrangements, they will be subject to extra transfer fees.

FLIGHT CONFIRMATION: We strongly suggest that you reconfirm exact flight times with the carrier prior to departure. Air travelers are required to check in at least 2 hours prior to departure time for domestic flights and 3 hours for international flights and must report to the gate at least 30 minutes prior to departure time. Failure to comply may result in the loss of the seat to another passenger.

HAZARDOUS MATERIALS: Federal law prohibits passengers from bringing hazardous materials on the aircraft. Federal law forbids the carriage of hazardous materials aboard aircraft in the passenger's luggage or on the passenger's person. A violation can result in five years' imprisonment and penalties of \$250,000 or more (49 U.S.C. 5124). Hazardous materials include explosives, compressed gases, flammable liquids and solids, oxidizers, poisons, corrosives and radioactive materials. Examples: Paints, lighter fluid, fireworks, tear gases, oxygen bottles, and radiopharmaceuticals. There are special exceptions for small quantities (up to 70 ounces total) of medicinal and toilet articles carried in the passenger's luggage and certain smoking materials carried on the passenger's person. For further information, each passenger should contact the relevant airline representative(s) on their itinerary. Restrictions on hazardous materials are listed <http://www.tsa.gov/traveler-information/prohibited-items>.

INSECTICIDE NOTICE: Some countries require insecticide spraying of aircraft prior to a flight or while you are on the aircraft. We recommend that you refer to the Department of Transportation's list of airports in countries that require airlines to treat the passenger cabin with insecticides prior to the flight or while on the aircraft available at <https://www.dot.gov/office-policy/aviation-policy/aircraft-disinsection-requirements>.



BAGGAGE & FEES: Additional fees for baggage may apply. Please contact your airline or refer to its website for detailed information regarding its checked baggage policies. On average, international flights from the USA allow one piece of checked luggage, not exceeding 50 pounds, plus a carry-on piece not exceeding 15 pounds; however, we always recommend that you check your airline's policy just before departure, as luggage limitations are always subject to change. There may also be luggage and weight restrictions for your destination and that information will be forwarded to you with your pre-departure material and also be listed on your final documents.

AIRLINE CLAUSE: The airlines concerned are not to be held liable for any act, omission or event during the time the passengers are not on board their planes or conveyance. The passengers' tickets in use by the airline or by other carriers concerned when issued shall constitute the sole contract between the airlines and the purchaser of these tickets and/or passengers.

DELAYS: We cannot be held liable for any delays or additional costs incurred as a result of airlines not running to schedule. Any additional land or air fees imposed on account of airline delays will be borne by the traveler.

TRIP DETAILS

ACCOMMODATIONS: You will marvel at the wonderful accommodations provided throughout your tour. All rooms have private bathroom facilities and air conditioning and/or fans, unless otherwise specified. All rates are based on double occupancy. Most rooms are twin-bedded, but king-size beds are occasionally available and should be requested in advance. Accommodations listed in this itinerary are correct at time of writing, but on rare occasions may be substituted for a different property of comparable quality.

MEALS: All meals as specified in the itinerary. Please notify us if you have special dietary needs or requests, and we will do our best to accommodate.

WATER: It is always advisable to drink bottled and/or filtered water when traveling overseas. Safe drinking water will be provided to travelers free of charge in the vehicles and during meals.

PHOTOGRAPHY: The Company reserves the right without further notice to make use of any photograph or video taken on the tour by our photographers without payment or permission. We guarantee that no photographs of a compromising nature will be used.

GUIDES: If one of Classic Escapes' guides are unable to take a trip due to circumstances out of our control (i.e., illness, etc.), we reserve the right to substitute with another guide.

TOUR ITINERARY: To the best of our knowledge the itinerary is correct at the time of printing. We cannot be held responsible for any inaccuracies or changes that may occur after printing.

HEALTH AND SPECIAL REQUIREMENTS: You must have the proper immunizations and health screenings and required documentation of such immunizations and screenings before travel. It is your responsibility to ensure you are aware of any health requirements, health advisories, or health travel restrictions applicable to your travel destinations and to ensure that you carry all necessary vaccination documentation. Classic Escapes is not responsible for providing you with this information. Travel carriers and local authorities at travel destinations may require specific testing prior to boarding and/or upon arrival at your destination, including, but not limited to, a temperature check as a result of the COVID-19 pandemic. You may be denied entry onto your carrier and/or entry upon arrival at your destination or be required to self-quarantine at your destination and upon your return to the United States. You must comply with local government regulations. Any additional costs are your responsibility. Check the State Department Web site <http://travel.state.gov>, for relevant information relating to travel to specific destinations, and the Center for Disease Control <http://wwwnc.cdc.gov/travel/> relating to health issues related to travel.

You must be in good physical and mental health. It shall be your duty to inform us in case you have any medical condition that may affect your ability to enjoy and pursue fully the services of Classic Escapes. By registering for a Classic Escapes service/program, you certify that you do not have any mental, physical, or other condition or disability that would create a hazard for yourself or others.

COVID-19 ACKNOWLEDGEMENT

In order to participate in one of our tours, travelers must certify that they have not recently been treated for, nor are aware of any physical or other condition or liability that would create a hazard to themselves or other members of the tour and agree to comply with all health protocols as directed by Classic Escapes and their representatives during their journey. Travelers must maintain suitable physical distancing and frequently wash or sanitize hands throughout their journey. Travelers MAY be required to wear masks in vehicles, indoor areas, and any outdoor areas where physical distancing is not possible and in accordance with local regulations. Noncompliance with these procedures will result in the suspension of the journey. **Travelers voluntarily assume all risks and related expenses in the event that they or any member of their traveling party require testing, quarantine, or become infected with COVID-19.** Classic Escapes will endeavor to provide assistance wherever possible.



TRAVEL INSURANCE: For your protection, we strongly recommend that you purchase trip cancellation and travel accident insurance. However, no representation or description of the insurance made by Classic Escapes to you constitutes a binding assurance or promise about the insurance. Classic Escapes is not an insurance company and has no responsibility for the submission, payment, or adjustment of any insurance claims. Any insurance claims that may fall under the relevant travel insurance policy must be submitted to the insurance company identified in the policy. We recommend the following service – please visit the website to enroll:

<http://www.travelguard.com/classicescapes/>. Any questions about what travel insurance does or does not cover should be addressed directly to the travel insurance company, Travel Guard at 1-866-385-4839 and reference ARC #71298. If you decline insurance coverage, you will personally assume full responsibility for any financial loss associated with your travel arrangements, and you could lose your travel investment and/or have to pay more money to correct the situation. **THE PURCHASE OF TRAVEL INSURANCE IS HIGHLY RECOMMENDED ON ALL TRIPS.**

EMERGENCY EVACUATION COVERAGE: For the convenience of our travelers, Classic Escapes provides a complimentary Medical Insurance Plan during your trip via Travel Guard Group, Inc. This includes:

- Emergency evacuation insurance up to \$100,000.
- Up to \$25,000 medical expense and up to \$500 dental expense coverage subject to the terms and limitations of the insurance policy.
- 24-hour worldwide travel and medical assistance.

Medical Plan (926801)

Please click here to view complete coverage of details.

https://webservices.travelguard.com/Product/FileRetrieval.aspx?CountryCode=US&StateCode=AL&ProductCode=926801&PlanCode=NW21&FileType=PROD_PLAN_MAP

TERMS & CONDITIONS

TOUR OPERATOR: Classic Escapes acts as a tour operator/travel agent only. Classic Escapes does not own, operate, manage, or control any independent suppliers of services and is not liable for their acts or omissions. Classic Escapes' obligations to you are to make travel bookings on your behalf and to arrange relevant contracts between you and other travel service providers. We have no responsibility for these services, nor do we have the authority to make any warranty or representation regarding their standard. Requests cannot be guaranteed. All bookings are subject to the terms and conditions and limitations of liability imposed by these travel service providers. You understand that your legal recourse is against the specific provider, not Classic Escapes. Conditions can change rapidly in a country at any time. It is your responsibility to check the USA Government Travel advisories for your intended destination at <https://travel.state.gov/content/travel.html>.

RESPONSIBILITY OF THE COMPANY: We always do our best to make sure your travel arrangements are satisfactory. However, Classic Escapes and its employees, shareholders, subsidiaries, affiliates, officers, directors, successors, agents, and assigns do not own or operate any third-party entity that provides goods and services for your travel, including without limitation lodging facilities, airline, vessel, motorcoach, or other transportation companies, local ground operators, providers, food service providers, etc. All such persons and entities are independent contractors and are in no way affiliated to Classic Escapes. We are not liable for any delays or additional costs incurred by the Traveler as a result of any actions or occurrences by any of the foregoing third party entities.

LIABILITY: Classic Escapes is not liable for any negligent or willful act or failure to act of any travel service provider or of any third party.

Because Classic Escapes does not have the right to control the operations of such travel service provider or any third party, you agree that Classic Escapes is not liable for any personal injury or property damage which may arise out of these services. Classic Escapes hereby disclaims any liability whether based on contract, tort, strict liability or otherwise, including without limitation liability for any direct, punitive, special consequential, incidental or indirect damages, in connection with the goods or services provided by any supplier booking through Classic Escapes, including without limitation liability for any act, error, omission, injury, loss, accident, delay or irregularity which may be incurred through the fault, negligence, willful acts, omissions or otherwise of such travel service provider or any third party, or their respective employees, agents, servants, or representatives, including, without limitation, their failure to deliver or their partial or inadequate delivery of services, their cancellation and refund policies, fuel increases, bankruptcy or cessation of operations and other matters outside of Classic Escapes' control, and you hereby exonerate Classic Escapes from any liability with respect to the same.

FORCE MAJEURE: Classic Escapes will not be in breach of these terms and conditions or otherwise be liable to you, for any failure or delay in performing an obligation under this Agreement that is due to any of the following causes, to the extent beyond its reasonable control: acts of God, accident, riots, war, terrorist act, illness, disease, epidemic, pandemic, quarantine, civil commotion, breakdown of communication facilities, including web host and internet service provider, breakdown or malfunction of equipment, destruction of or

serious damage to facilities, natural catastrophes including, but not limited to extreme weather events, floods and volcanic eruptions, governmental acts or omissions, changes in laws or regulations, national strikes, fire, explosion, generalized lack of availability of raw materials or energy, and any other unforeseen circumstance which is beyond the control of Classic Escapes. **THE PURCHASE OF TRAVEL INSURANCE IS HIGHLY RECOMMENDED ON ALL TRIPS.**

REFUSAL OF SERVICE: Service providers reserve the right to refuse service to travelers at their sole discretion, including, without limitation, if the traveler: (i) lacks proper documentation for the country of destination; (ii) has a contagious disease; (iii) is under the influence of alcohol, drugs, or narcotics; and/or (iv) manifests disruptive and/or unruly behavior. Classic Escapes assumes no liability for the acts of the service provider in refusing service.

ELECTRONIC OR HANDWRITTEN SIGNATURE: Both parties agree that you may acknowledge and agree to these Terms: (i) electronically; (ii) by handwritten signature; (iii) by any other electronic means, including, without limitation, via email acceptance of these Terms; or (iv) by your implied consent deemed via your actions, which shall include without limitation the payment of the invoice in part or in full or your use of the services provided by Classic Escapes or any other travel supplier related to your booking. All such means will be deemed to constitute effective acknowledgement and execution of this Agreement and shall be sufficient to bind the parties to the terms and conditions of this Agreement.

RESERVATION OF RIGHTS: We reserve the right, in our sole discretion, to change these Terms and Conditions at any time. Updated versions of the Terms will be provided to you, will be posted on our website, and are effective immediately on posting.

GOVERNING LAW: The construction, validity, and performance of these Terms and any disputes between the parties shall be governed by and construed according to the laws of the State of New York, without giving effect to its conflict of law principles, and any federal laws applicable therein. Both parties submit to the exclusive jurisdiction of the courts of the State of New York with respect to any legal proceedings relating to these Terms.



RESERVATION FORM: WASHINGTON UNIVERSITY ~TOGO & GHANA

25AFL0224/WUSTL

Enclosed is my deposit for \$ _____ (\$1,600 per person for the main trip, \$600 for the pre-extension and \$900 for the post extension) to hold _____ place(s) on a Cultural Adventure to Togo & Ghana departing on February 24, 2025. Check your Tour at a Glance section for all pricing.

Final payment due date is November 21, 2024

Please make check payable to CLASSIC ESCAPES and mail 58-25 Queens Blvd. Woodside, NY 11377

Charge deposit to: _____ MasterCard _____ Visa _____ American Express _____ Discover.

(Credit Card Authorization form needs to be completed and returned to Classic Escapes via mail or fax to 718-204-4726)

Deposits can be made by credit card; however, all final payments are required to be made by check or money order only.

1) NAME (As appears on passport): Mr. Mrs. Ms. _____ Date of Birth (M/D/Y) ____/____/____

Passport No. _____ Green Card No. _____ Expiration Date _____ Nationality _____

2) NAME (As appears on passport): Mr. Mrs. Ms. _____ Date of Birth (M/D/Y) ____/____/____

Passport No. _____ Green Card No. _____ Expiration Date _____ Nationality _____

NAME YOU PREFERRED TO BE CALLED IF DIFFERENT FROM ABOVE: 1) _____ 2) _____

STREET ADDRESS: _____

CITY: _____ STATE: _____ ZIP: _____

PHONES: HOME: () _____ OFFICE: () _____ MOBILE: () _____

EMAIL ADDRESS: _____ FAX: () _____

I certify that I have not recently been treated for, nor am I aware of, any physical or other condition or liability that would create a hazard to myself or the other members of this tour.

A copy of your passport must accompany this form to confirm reservation. Upon receipt of your signed reservation form, passport copy and deposit we will, subject to availability, reserve your spot on the tour. Passport must be valid for at least 6 months after the return of your trip and have four consecutive blank pages in the visa section.

The two of us above are sharing a room and, where possible, would like a room with: ONE TWO Beds (make one selection only)

I am sharing with _____ (form sent separately)

I need assistance in securing a roommate. I understand if one cannot be located for me by final payment date, I agree to pay the additional single supplement amount listed on the Journey at a Glance page.

I prefer to share with: Smoker Non-smoker.

I desire single accommodations, if available, and will pay the single room supplement additional cost

I/We wish to participate in the optional pre-extension to Benin

I/We wish to participate in the optional post extension to Mole National Park

CLASSIC ESCAPES CAN ASSIST WITH INTERNATIONAL FLIGHT ARRANGEMENTS FROM ANY US CITY.

YES, I WILL REQUIRE ASSISTANCE. PLEASE SEND ME INFORMATION TO DEPART FROM _____

I REQUIRE: ECONOMY BUSINESS/FIRST CLASS

All rates quoted are based on tariffs and value of foreign currencies in relation to the U.S. dollar in effect as of December 19, 2023 and are subject to change. Refunds are made less any cancellation charges levied in accordance with the policy outlined in the accompanying Conditions of Travel. **WE STRONGLY RECOMMEND THAT YOU OBTAIN TRAVEL INSURANCE. RESERVATIONS ARE ACCEPTED SUBJECT TO TOUR CONDITIONS AND WILL BE CONFIRMED ONLY IF ACCOMPANIED BY COMPLETED FORM SIGNED BY THE TOUR PARTICIPANT(S).**

SIGNATURE: _____ DATE: _____

SIGNATURE: _____ DATE: _____

CLASSIC ESCAPES INC.
191 W Poplar Street,
Floral Park, NY 11001.

(We recommend that you keep a copy of your selections as noted above for your future reference)

WASHINGTON UNIVERSITY ~ TOGO & GHANA
FEBRUARY 24 TO MARCH 6, 2025



191 W Poplar Street, Floral Park, NY 11001
T: (718) 280-5000; (800) 627-1244
F: (718) 204-4726
E: info@classicescapes.com

CREDIT CARD PAYMENT AUTHORIZATION

Please Note: If you wish to charge your deposit to Visa, MasterCard, American Express or Discover, this authorization form MUST be completed and returned to us along with your reservation form before we can process your application.

I authorize (**Classic Escapes Inc.**) to charge my VISA/MASTERCARD/DISCOVER/AMEX listed below:

Name appearing on credit card

Card number Expiration date

Card Verification Number* Card Type

Billing address of credit card

Amount of transaction

Services rendered/Items purchased

Phone number

Signature Date

***How To Locate Your Card Verification Number:**

(**Visa, MasterCard, Discover:** Locate the credit card number on the back of the card above the signature box. Enter the 3-digit number that follows the credit card number. **American Express:** Enter the 4-digit number found directly above and to the right of the credit card number.)

I understand that all rates quoted for this tour on which I'm making a payment are based on tariffs and value of foreign currencies in relation to the U.S. dollar in effect as of December 19, 2023 and are subject to change. Deposit is non-refundable - see cancellation penalties applicable as outlined on Conditions of Travel.

- Up to 6 months prior to departure (August 28, 2024), \$300 per person administrative fee.
- 179 days to 96 days prior to departure (August 29 to November 20, 2024), \$300 per person administrative fee, plus \$500 non-refundable deposits given to suppliers.
- 95 days to 76 days prior to departure (November 21 to December 10, 2024), deposit is forfeited.
- 75 days to 60 days prior to departure (December 11 to December 26, 2024), 50% refund is possible.
- 59 days or less prior to departure (December 27, 2024), no refund is possible.

These cancellation fees are also in addition to any fees imposed by airlines.

PLEASE NOTE: At times, our bank requires a photocopy of credit card (both sides) and driver's license or document showing signature of cardholder, in order to process the charge. While it is not required at this time that you include these materials with your deposit, if our bank requests it, we will contact you for these copies.