



THE ROGER WILLIAMS PARK ZOO

CORDIALLY INVITES YOU ON A CLASSIC ADVENTURE TO

BELIZE

INCLUDING TIKAL, GUATEMALA

JAGUARS, BIRDS, RAINFORESTS & MAYAN RUINS

JANUARY 23 TO FEBRUARY 1, 2025



191 W Poplar Street, Floral Park, NY 11001
T: (718) 280-5000; (800) 627-1244
F: (718) 204-4726
E: info@classicescapes.com
W: www.classicescapes.com

For more information, find us on:
 [facebook.com/Classic.Escapes.inc](https://www.facebook.com/Classic.Escapes.inc)
 twitter.com/classicescapes
 [instagram.com/classic_escapes](https://www.instagram.com/classic_escapes)

YOUR ITINERARY

DAY 1 ~ THURSDAY ~ JANUARY 23

USA/PLACENCIA, BELIZE

Your adventure begins as you board your flight to Belize. Arrive Belize City and after customs, your light aircraft takes you to Placencia situated on the Caribbean seacoast, where the rest of the day is at leisure to relax or take a refreshing dip in the Caribbean.

Nestled between a radiant lagoon with mangrove-fringed shores on the west and the vibrant turquoise Caribbean Sea on the east, the Placencia peninsula offers an abundance of opportunities for both adventure and relaxation.

Explore the wonders of the Barrier Reef through diving or snorkeling, paddle through mangroves and secluded cayes by kayak, observe the rich birdlife and wildlife along Monkey River or at Cockscomb Nature Sanctuary, or enjoy the thrill of sport fishing for tarpon, permit, yellowfin tuna, or king mackerel. Alternatively, unwind on the pristine beaches of mainland Belize, soaking in the sun while savoring your favorite drink and listening to the soothing sounds of waves lapping against the shore.

Tonight, enjoy a welcome dinner at your resort.

Nestled along the stunning coastline near Placencia village in southern Belize, Chabil Mar Villas is a luxury resort offering an exquisite getaway experience. Boasting 22 spacious villas, each uniquely decorated with Belizean charm and modern amenities, the resort caters to discerning travelers seeking comfort and elegance. Indulge in personalized dining experiences, either enjoying your meals seaside or in the privacy of your own verandahs. With two infinity pools, you can relax and unwind while soaking in the breathtaking ocean views. Complimentary bicycles, kayaks and paddle boards are available for you to explore the surrounding area at your leisure. All rooms come equipped with air conditioning, ceiling fans and complimentary Wi-Fi.

Overnight at the CHABIL MAR VILLAS, in two-bedroom villas. (D)

<https://chabilmarvillas.com/>

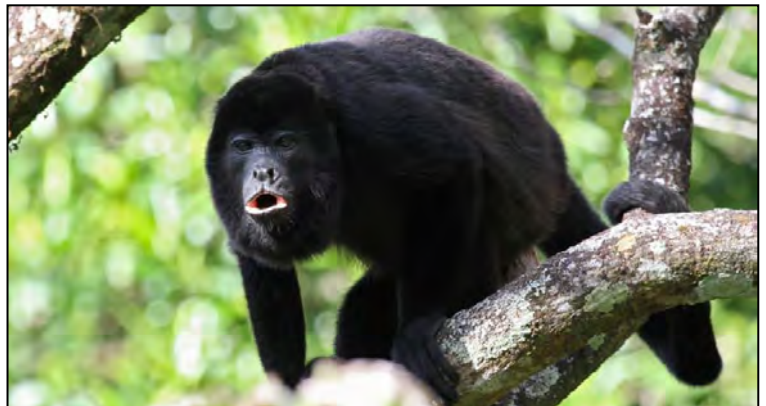
Approximate driving distance from the airstrip to Chabi Mar Villas: 8 minutes

DAY 2 ~ FRIDAY ~ JANUARY 24

PLACENCIA/MONKEY RIVER

This morning, embark on a serene boat journey along the picturesque Monkey River, followed by a trek through the lush jungle. Your adventure begins with your guide meeting you at your hotel and driving you to the local marina. From there, a boat ride takes you to Monkey River Town, located about 11 miles south of Placencia. Board a small boat and silently glide through the vibrant jungle, teeming with diverse wildlife such as crocodiles, turtles, iguanas, and herons.

Transitioning from the river to the jungle floor, a moderate 40-minute hike offers opportunities to spot howler monkeys, toucans, and other exotic creatures. Your knowledgeable guide shares insights about the rainforest's herbal and medicinal plants along the trail.



After the hike, return to the boat for a journey to the coastal lagoon and its mangrove channels, home to the endangered West Indian manatees, known as "sea cows." Indulge in a traditional lunch in Monkey River Town before heading back to Placencia.

Note: This excursion includes a private guide, transfers, boat ride, admission fees, and a delicious traditional lunch.

Estimated duration of activities: 6-7 hours.

Overnight at CHABIL MAR VILLAS. (B,L,D)

DAY 3~ SATURDAY~ JANUARY 25

PLACENCIA/LAUGHING BIRD CAYE/SILK CAYE

After breakfast, prepare for an exciting snorkeling adventure by gathering your gear and heading down to the dock. Step aboard a motorboat and embark on a journey to explore the stunning Belize coral reef. Your first stop is Laughing Bird Caye, just a 35-minute ride away, with Silk Caye further out. Depending on weather conditions and your preferences, the snorkeling spots may vary.



Once at the caye, gear up with your mask, fins, and snorkel, and dive into the warm, crystal-clear waters straight from the beach. Explore the vibrant underwater world, admiring colorful fish weaving through beautiful coral formations. Keep an eye out for spiny lobsters moving along the seafloor.

After your snorkeling adventure, return to shore for a brief break and enjoy a delicious traditional Belizean lunch. Then, hop back on the boat for more snorkeling at another caye (*weather permitting*). As the day comes to an end, board the boat for the journey back to the mainland.

Included: All snorkeling gears, packed lunch, beach towels, water, fruits & park fees.

Estimated duration of activities: 7 hours

Overnight at the CHABIL MAR VILLAS. (B,L,D)

DAY 4~ SUNDAY~ JANUARY 26

PLACENCIA/CAYO DISTRICT

Start your morning with breakfast before checking out of your hotel. Afterward you will embark on a scenic journey along the Hummingbird Highway making a captivating detour at the Cockscomb Basin Wildlife Sanctuary. This sanctuary, nestled within a vast protected area, stands as the world's first jaguar sanctuary, offering a rare opportunity to glimpse the elusive big cat's tracks along the trail Near



Placencia is the world's only jaguar preserve, the Cockscomb Basin Wildlife Sanctuary. This unique sanctuary covers an area of about 150 square miles of tropical forest, and is the world's only Jaguar Preserve. Declared a Forest Preserve in 1984 and a Jaguar Preserve in 1986, the park is the culmination of many years of work and perseverance by individuals and national and international organizations. The park area is rich in beauty, wildlife and even Maya culture; a well concealed minor Maya ceremonial site known as Chucil Baluum is typical of the Classic Period.

The jaguar (*Panthera onca*) is the third largest member of the cat family and endangered in most of its range. Here at Cockscomb, the jaguar is doing quite well - and it by no means the only beneficiary of the safety of the preserve. Other cats such as the puma, ocelot, jaguarundi and

margay, as well as peccary, paca, brocket deer, tayra, otter and coati, enjoy a population density difficult to achieve in most locations. Cockscomb is also renowned for its bird populations and boasts some 300 recorded species, including Clay-colored Robin, Social Flycatcher, Collared-seed Eater, Crimson-collared and Masked Tanager, Bat Falcon, Great Curassow and Keel-billed Toucan. Impressive numbers and variety are also found in the herpetofauna and in the flora of the basin.

Although you are likely to see signs of recent jaguar activity during your visit, it is highly unlikely that an actual jaguar sighting will occur; these wonderful animals are masters of stealth, and their very existence is based on seeing without being seen.

The most important feature about Cockscomb though, is its trail network, the most extensive of any reserve in the country. Explore the sanctuary's natural wonders, from breathtaking waterfalls and mountain vistas to the colorful array of neotropical birds that call this area home. Wander along the trails to discover picturesque waterfalls, keeping an eye out for toucans, hummingbirds, egrets, and iguanas. For a unique adventure, float down the river on an inner tube, immersing yourself in the tranquil beauty of the surroundings.



After your exploration, you will continue your drive to Cayo District which has rugged terrain and remote landscapes, characterized by highland rainforests, cattle ranches, and pinelands. Situated in western Belize, this district offers endless opportunities for outdoor exploration, whether by foot, horseback, or watercraft. Discover Belize's oldest and largest national park, the Mountain Pine Ridge Forest Reserve, boasting caves to explore, refreshing rivers to swim in, and a diverse array of tropical birds to admire.

Cayo is home to Chiquibul National Park, the largest intact tropical forest north of the Amazon and home to endangered species such as jaguars, red-eyed tree frogs, and Morelet's crocodiles. Surrounding the expansive archaeological site of Caracol, Chiquibul provides insight into ancient Maya civilization. The district's vibrant hub, San Ignacio, features colonial-era streets lined with a variety of restaurants and shops, a bustling weekly market, and nearby Maya ruins such as Cahal Pech, Xunantunich, and the caves of Actun Tunichil Muknal.



Black Rock Lodge is located in the serene surroundings of the Mayan Mountains within the Cayo District, and offers a tranquil escape along the banks of the Macal River. Boasting 13 cabins of varying categories, alongside a cozy restaurant and bar, you can indulge in the beauty of the natural landscape. On-site activities include hiking, biking, horseback riding, and tubing. Indulge in a meal at the restaurant on property where the kitchen skillfully incorporates seasonal ingredients into daily meals. Located above the tranquil Macal River, the restaurant boasts stunning views. All cabins come equipped with hammocks and Wi-Fi. The cabins are located amidst tall trees to provide shade for a pleasant stay, even in Belize's warmer weather. All windows are fitted with louvers and screens to keep insects out and allow cool breezes in. While the cabins do not have air conditioning, all cabins include ceiling fans for added comfort.



Estimated duration of activities: 7 hours

Overnight at BLACK ROCK LODGE, in cabanas. (B,L,D).

<https://www.blackrocklodge.com/belize-cabins/>

Approximate driving time from Chabil Mar Villas to Black Rock Lodge: 4 hours including a stop at the Cockscomb Basin Wildlife Sanctuary.

DAY 5~ MONDAY~ JANUARY 27

CAYO DISTRICT/AGUACATE LAGOON/BARTON CREEK CAVE

Start your day bright and early, as you journey with your expert birding guide. Along the way, you'll pass through a Mennonite community where horse-drawn carriages dominate the roads.

Upon arrival at the lagoon, enjoy a short jungle hike to reach the charming Mayan site of Aguacate, where you'll have the chance to spot various bird species, including hawks and flycatchers.

Journey through the breathtaking Mountain Pine Ridge area before venturing off the beaten path to explore the mysterious Barton Creek Cave system. Upon arrival at Barton Creek Cave, prepare to paddle and illuminate your path with powerful lights for a half-day expedition into its depths. This ancient cave served as a ceremonial center and burial site for the Maya civilization. Drift serenely along the scenic creek, uncovering the secrets of the Mayan underworld as you navigate through the dark, winding passages. Marvel at the majestic stalactites and intricate calcite formations in the cathedral-like chambers while knowledgeable guides share fascinating insights into the cave's archaeological significance. This adventure offers a captivating journey into the past and the region's rich cultural heritage.

Estimated duration of activities: 8 hours

Overnight at BLACK ROCK LODGE. (Trail snack, picnic L,D).



DAY 6~ TUESDAY~ JANUARY 28

CAYO DISTRICT/YAXHÁ/TOPOXTÉ/TIKAL NATIONAL PARK

Your adventure continues as you cross the border into Guatemala. Embark on your journey to Yaxhá, one of Guatemala's largest Mayan complexes, boasting over 500 structures, including nine temples and a rare twin pyramid complex. Experience the thrill of ascending Temple 216, towering at an impressive height of 37 meters (121 feet), offering unparalleled panoramic views of the lush rainforest canopy, nearby pyramids, and shimmering lakes below.

Explore the lesser-known corners of the site before embarking on a scenic boat ride to the secluded island ruins of Topoxte. As the sun dips below the horizon, casting a golden glow over the ancient ruins, immerse yourself in the mystical ambiance of a bygone era. Indulge in drinks and savor the breathtaking sunset before continuing your adventure at Tikal Park. This exclusive experience combines the grandeur of Yaxhá's temples with the enchantment of a sunset boat tour to unique island ruins, promising an unforgettable exploration of Guatemala's rich Mayan heritage.





Perched high above the dense jungle canopy, the ancient temples of Tikal command attention. This sprawling complex, boasting over 3,000 structures, holds UNESCO World Heritage status and stands as the largest excavated site in North America. Dating back to around 400 BC, Tikal experienced its heyday between 200 and 900 AD. While adorned with intricate hieroglyphs and carvings, Tikal is renowned for its colossal temples. Among them, Temple IV stands tall at 154 feet, offering panoramic views across the jungle—a thrilling experience for adventurous climbers. The central plazas of Tikal are adorned with magnificent ruins, creating an architectural marvel that continues to captivate visitors.

Jungle Lodge is nestled within the lush embrace of the tropical rainforest. The lodge features 49 spacious rooms and suites, each blending tropical charm with modern comforts. Enjoy private baths and outdoor showers. Start your day with a hearty breakfast at the lodge's restaurant before embarking on adventures in the park, just a short walk away. Keep an eye out for howler monkeys amidst the forest canopy as you make your way to the park entrance. Upon your return, unwind by the poolside with a refreshing mojito or Gallo beer, savoring lunch, snacks, and dinner crafted from locally sourced ingredients. Due to its remote location, the hotel operates with limited electricity supply. However, all rooms are equipped with ceiling fans and one wall socket with continuous electricity. Additionally, the lobby area offers complimentary Wi-Fi and electricity around the clock.



In accordance with restrictions and norms of Tikal National Park, the lodge can only run the power generators on certain schedules, providing the rooms with limited power after 10 p.m. Full electricity is available during specific hours: 6:00 AM to 8:00 AM, 1:00 PM to 2:00 PM, and 5:00 PM to 10:00 PM.

Estimated duration of activities: 8 hours

Overnight at the JUNGLE LODGE, in premium rooms. (B,L,D)

<https://junglelodgetikal.com/en/home-english/>

Approximate driving time from Black Rock Lodge to Melchor de Mencos (border): 45 minutes.

Approximate driving time from Melchor de Mencos (border) to Jungle lodge: 2-2 ½ hours

DAY 7~ WEDNESDAY~ JANUARY 29

TIKAL/TIKAL NATIONAL PARK

Tikal is among the world's travel wonders, believed by many to be one of the most spiritually powerful spots on earth. The site's towering pyramids loom out of the thick jungle canopy like stoic sentinels of ancient mysteries.

Once a wealthy metropolis of 100,000 inhabitants and the seat of power for the great Jaguar clan lords, today Tikal attracts archeologists from all around the globe. The ruins of Tikal include more than 3,000 structures extending over six square miles: palaces, temples, ceremonial platforms, ball courts, terraces, plazas, avenues and steam baths. The ancient Mayans began building Tikal around 600 B.C.E., and for the next 1500 years the area was an important religious, scientific, and political center.

Though the Maya empire has fallen, there is no shortage of life at Tikal today. Screeching howler monkeys and squawking parrots make up the soundtrack. White-lipped peccary, brocket deer, coatimundis, toucans, ocelots; even the occasional jaguar can be spotted. Fascinating tropical flowers are abundant, to say nothing of the trees that cloak the area. Because of its importance and magnificent combination of nature and archaeological remains, Tikal has been declared a Heritage of Humanity site by UNESCO.

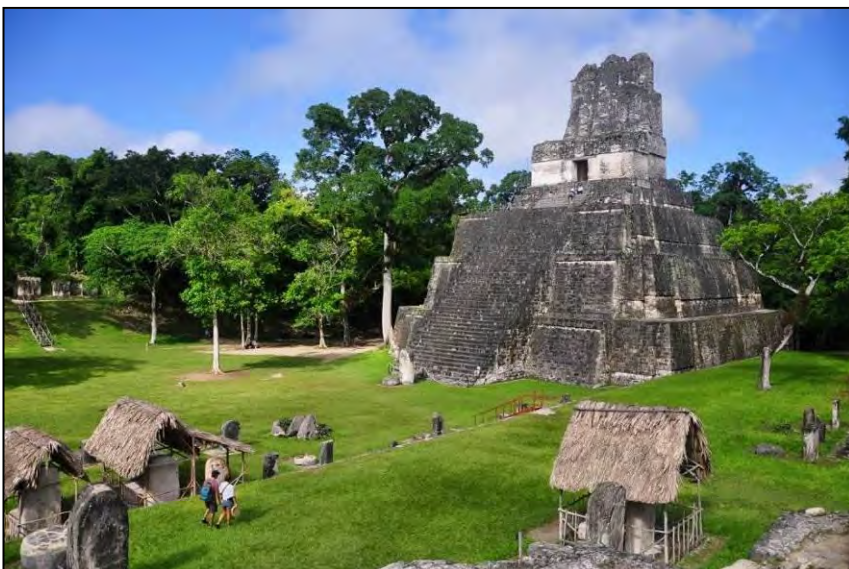
You will have the chance to visit several remarkable structures. The Great Plaza (Temples I & II and the ball court) and its surroundings were the focus of sociopolitical life at Tikal during the Late Classic Period and remain the heart of Tikal today. Built around the year 700 A.D., Temples I and II are majestic representatives of the type of monumental grandeur accomplished by the rulers of Tikal during this era. Temple I

(Temple of the great Jaguar), a stylized building facing west toward the setting sun, stands at 144.36 feet tall, while Temple II (Temple of the Masks), standing 122 feet tall, was erected facing east toward the rising sun. The Maya of Tikal considered Temple I the portal to the Underworld. The temple complex may represent the Full Cycle of Life itself.

After the tour, enjoy a delicious lunch at a local restaurant. Take time to explore the museum at the visitor center, offering deeper insights into the rich history and culture of Tikal, before concluding your day and returning to your hotel.

Estimated duration of activities: 8 hours

Overnight at the JUNGLE LODGE. (B,L,D)



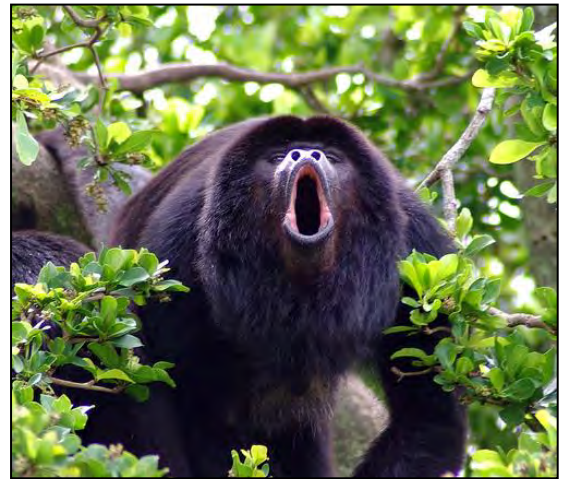
DAY 8~ THURSDAY~ JANUARY 30

TIKAL/BELIZE ZOO/HOWLER MONKEY SANCTUARY

Cross once again the border back to Belize and then by road and boat, head to your home for the next two nights, Lamanai lagoon. En route, visit the Belize Zoo started in 1983 in a last-ditch effort to provide a home for a collection of wild animals which had been used in making documentary films. Shortly after the backyard "zoo" began, the organizers realized that its Belizean visitors were unfamiliar with the wildlife which shared their country and were inspired to develop the little zoo into a dynamic wildlife education center. Today, The Belize Zoo and Tropical Education Center encompasses 29 acres of tropical savannah and exhibits over 125 animals, all native to Belize. The zoo keeps animals which were orphaned, born at the zoo, or rehabilitated after accidents, as well as animals sent as gifts from other zoological institutions.



Next stop is the Community Baboon Sanctuary (CBS), a pioneering project in voluntary grassroots conservation. The goal is to protect the endangered black howler monkey (called 'baboon' in the local Creole dialect) while promoting economic development in the participating communities. The result is an innovative project in sustainable ecotourism that preserves habitat for the monkey and other species while offering a unique opportunity for visitors to experience the rainforest and witness black howler monkeys in the wild. Over 200 private landowners in seven villages stretching over 20 square miles have voluntarily pledged to conserve their land for the protection of the black howler monkeys' habitat. Many of these landowners benefit directly from the Sanctuary thanks to ecotourism, while others benefit indirectly through the educational programs. Meanwhile, the population of the black howler monkey in the Sanctuary continues to rise.



The Lamanai Outpost Lodge sits on the shores of the New River Lagoon. During the dry season (*late November to late April*) when water levels drop, large numbers of water birds concentrate to take advantage of the food supply- from cormorants, herons, egrets, ibis, spoonbills, and limpkins to even the rare Agami Heron and Jabiru. Search for regional specialties including Yucatan Jay, Yucatan Flycatcher, Black-throated (Yucatan) Bobwhite, Yellow-lored Parrot, and Yucatan Woodpecker.



While in Lamanai Lagoon explore the 3,000-year-old temples of Lamanai – a center of power from the Pre-Classic period through the Spanish conquest. Enjoy hiking in the living jungle where you may encounter howler and spider monkeys, peccary, coatimundi, some

270 species of birds, and perhaps the tracks of the elusive jaguar and ocelot – or even a fleeting glimpse of the big cats themselves. Other activities include a dawn walk in the jungle, sunset cocktail cruise, and a nature walk at night by spotlight.



Experience the enchanting blend of ancient history and natural beauty at Lamanai Outpost Lodge, situated along the tranquil shores of a pristine lagoon surrounded by the remnants of a significant Maya civilization. Featuring 17 charming cabanas adorned with traditional thatched roofs, the lodge offers an open-air restaurant and bar. Access the lodge via a scenic riverboat journey, where you can marvel at the diverse wildlife along the lush banks of the New River. Whether you're a couple, family, or small group, Lamanai Outpost Lodge offers an unforgettable escape immersed in nature, wildlife, and ancient Mayan heritage. Each room comes equipped with high output ceiling fans, full screen protection from insects and other critters, complimentary Wi-Fi, complimentary water bottles, an in-room safe and a private bathroom with hot water and shower amenities.



Estimated duration of activities: 7 hours

Overnight at LAMANAI OUTPOST LODGE, in superior garden view rooms. (B,L,D)

<https://lamanai.com/>

Approximate driving time from Jungle lodge to Lamanai Outpost lodge: total 5:30 hours with stops enroute. (Jungle lodge to Towell Hill approximately 4:15 hours, boat ride Towell Hill to Lamanai Outpost Lodge approximately 1:15 hours)

DAY 9~ FRIDAY~ JANUARY 31

LAMANAI

Today enjoy your stay at the Lamanai Outpost Lodge and choose from an array of activities, two of which are included in your stay.

Embark on an exhilarating adventure with the Jungle Dawn experience, immersing yourself in the vibrant jungle as the sun begins to rise. Spend 1.5 to 2 hours exploring the dense foliage and awakening wildlife, creating unforgettable memories in the heart of nature.

Or step back in time and unlock the mysteries of the ancient Maya civilization with the Lamanai Maya Ruins tour. Journey deep into history during this 3-hour exploration of majestic ruins, where every stone tells a story of a bygone era, leaving you awe-inspired by the ingenuity of the Maya people.

Why not prepare for a journey of discovery along the Maya Medicine Trail, a 1.5-hour guided excursion revealing the secrets of traditional healing methods used by ancient civilizations. Delve into the lush wilderness, uncovering the natural remedies that have stood the test of time.

Embark on a Sunset Cocktail Cruise for an enchanting voyage along the tranquil waters. Sip on refreshing cocktails while basking in the golden hues of the setting sun, creating a magical moment amidst breathtaking scenery.

Venture into the heart of the jungle on a Nature Walk, a thrilling 1 to 2-hour trek through untouched wilderness. Immerse yourself in the sights and sounds of nature as you uncover hidden wonders and encounter fascinating wildlife along the way.



If you are a night owl, experience the jungle come alive after dark on the night walks, offering a unique opportunity to witness nocturnal creatures in their natural habitat. Traverse mysterious trails under the moonlit sky, discovering the secrets of the night with every step.

Estimated duration of activities: 7 hours

- *Jungle Dawn: 1-½ to 2 hours*
- *Lamanai Maya Ruins: 3 hours*
- *Maya Medicine Trail: 1-½ hours*
- *Sunset Cocktail Cruise: 1-½ to 2 hours*
- *Nature Walk: 1 to 2 hours*
- *Night Walks: 1-½ to 2 hours*
- *Spotlight Nature Safari: 1-½ to 2 hours / Minimum Participants 4*

Overnight at LAMANAI OUTPOST LODGE. (B,L,D)

DAY 10~ SATURDAY~ FEBRUARY 1 LAMANAI OUTPOST LODGE/USA

Enjoy your last morning in Lamanai before being transported by boat (*no sunroof*) from the lodge to Tolldbride (*60-75 minutes*), and by an air-conditioned vehicle (*60 min*) from river dock to Belize City's airport to board your flight back home, carrying with you many fond memories of your Belizean adventure.

Approximate driving time from Lamanai Outpost lodge to Belize City: total 2 ½ hours. (Boat ride Lamanai Lodge to Tower Hill 1 hour & land transfer from Tower Hill to Airport is 1-½ hours approximately)



INCLUSIONS

- Accommodations as indicated, or similar.
- Breakfast daily. Other meals as per itinerary.
- Flights within Belize as per itinerary: Belize City to Placencia. Domestic flights in Belize are carried out in 12-passenger (*or occasionally smaller*) aircrafts.
- All transfers by private motor coach.
- Complimentary bottled water in vehicles and with meals.
- A host from the Zoo with a minimum of 10 travelers.
- Accompanied by a naturalist guide with a minimum of 10 travelers throughout.
- All applicable hotel and lodge taxes and gratuities for baggage handling.
- All park entry fees.
- Complimentary baggage tags and water bottle.

EXCLUSIONS

- Round trip air transportation between USA and Belize City. If you require assistance with air arrangements, contact Classic Escapes.
- Passport and visa fees and service charges for obtaining visas. No visas are required for Belize.
- Excess baggage charges levied by airlines.
- Meals and beverages, other than specified.
- Gratuities to naturalist, driver/ guides and other conveyance attendants.
- Laundry and other items of a personal nature.
- Personal and baggage insurance.

Please Note That The Itinerary Sequence Is Correct At The Time Of Writing, But Is Subject To Change.



THINGS YOU NEED TO KNOW ABOUT BELIZE & GUATEMALA

Participants

- Your visit includes considerable walking/hiking at different altitudes. These walks are uphill, on uneven ground, at various sites and ancient ruins and also include uneven steps.
- You must be in excellent physical health to enjoy this destination to its fullest. These conditions may pose problems to participants with particular physical issues, and you should always consult your personal physician before embarking on such an adventure.

General

- True adventure in travel can sometimes be accompanied by unexpected changes in conditions, itineraries and occasionally your accommodations.
- Participants should travel with a spirit of adventure and flexibility. Remember to pack your patience and sense of humor! Be willing to look past self-imposed ideals of Western amenities and do not compare these new experiences with your life back home. Travel often includes visiting destinations with modest infrastructures and a bending definition of comfort.
- Participants should generally be in good health and prepared to travel in locations with limited medical facilities.

Air Schedules

The cost of your program does not include international airfare. If you require assistance, please contact Classic Escapes at 718-280-5002 and we will happily provide air quotes to you. You may make your own international air arrangements, but please ensure you arrive/depart on the correct dates. Contact your Journey Manager at Classic Escapes to verify the dates to ensure there are no errors. **The start and end city for this program is Belize City, Belize.**

Upon registration, you must provide your full legal name as it appears on your passport. In the event an airline ticket is issued with incorrect information you have provided, you will be responsible for charges associated with reissuing the ticket.



YOUR JOURNEY AT A GLANCE

INCLUDING: PLACENCIA, MONKEY RIVER, COCKSCOMB WILDLIFE SANCTUARY, CAYO DISTRICT, BARTON CREEK CAVE, YAXHÁ & TOPOXTÉ, TIKAL NATIONAL PARK, BELIZE ZOO, BABOON SANCTUARY

SPONSORING ORGANIZATION: ROGER WILLIAMS PARK ZOO

ESCORTED BY: A HOST FROM ROGER WILLIAMS PARK ZOO

DATES: JANUARY 23 TO FEBRUARY 1, 2025

COSTS: PRICES ARE PER PERSON, DOUBLE OCCUPANCY	MAIN PROGRAM BASED ON 10 TRAVELERS
LAND, CRUISE & INTERNAL AIR	\$7,995 PER PERSON
SINGLE ROOM SUPPLEMENT	\$1,995 PER PERSON, ADDITIONAL

* SINGLE SUPPLEMENTS ARE VALID FOR FIRST TWO SINGLE ROOMS BOOKED. IF MORE THAN TWO SINGLE ROOMS, ADDITIONAL SUPPLEMENT MAY APPLY. SINGLES ARE ASSIGNED ON A FIRST COME/FIRST SERVE BASIS.

INTERNATIONAL AIR ARRANGEMENTS: The cost of your program does not include international airfare. If you require assistance, please contact Classic Escapes at 718-280-5002 and we will happily provide air quotes to you. You may make your own international air arrangements, but please ensure you arrive/depart on the correct dates. Contact your Journey Manager at Classic Escapes to verify the dates to ensure there are no errors. **The start city and end city of this program is Belize City, Belize.**



CONDITIONS OF TRAVEL:

The purchase of your travel booking constitutes a contractual agreement between the traveler(s), customer(s), and/or purchaser(s) (collectively as "You" and "Traveler"), and Classic Escapes ("Classic Escapes", "We", "Us") pursuant to the following terms and conditions ("Terms", "Agreement"):

REGISTRATION & PAYMENTS

HOW TO BOOK: Fill out and sign the enclosed reservation form and send it, along with the relevant deposit as shown below, to: CLASSIC ESCAPES, 191 W Poplar Street, Floral Park, NY 11001. Upon receipt of your signed reservation form and deposit, we will, subject to availability, reserve your spot on the tour. You may consider your booking confirmed when you receive a confirmation notice and invoice from us.

DEPOSIT AND FINAL PAYMENT: You will be required to pay the following per person deposit when booking. This amounts is:

- \$1,600 for the trip

All deposits are subject to the Cancellation policy herein. Final payment is required no less than 95 days prior to departure (October 20, 2024) unless otherwise stated. Some fares or services must be paid in full at the time of booking. Payments may be made by check or with a credit card (American Express, Visa, MasterCard, or Discover.) Conditioned on receipt of final payment in full, all final documents and air tickets will be sent to you approximately two weeks prior to departure.

CREDIT CARD TRANSACTIONS: If for any reason, any travel service provider is unable to provide the services for which you have contracted, your remedy lies against the provider, and not against Classic Escapes, and in the event that payment has been made to Classic Escapes by credit card, you agree that you will not seek to chargeback your payment to Classic Escapes. If the credit card is passed through to the travel service provider and you seek to chargeback your payment from the provider, you agree to be held liable and indemnify Classic Escapes against this chargeback from the provider, including without limitation any air debit memos charged to Classic Escapes. If the credit card is declined, you guarantee that you will settle any amounts owing to Classic Escapes via money order or cash immediately. Except in cases of fraud, you agree not to file any dispute with your bank or credit card company to avoid or violate any booking terms and conditions of Classic Escapes or its suppliers, including cancellations or changes of itinerary or arrangements for reasons beyond the control of Classic Escapes or its suppliers. If you attempt to chargeback, reverse, or recollect a previously authorized trip payment, Classic Escapes reserves the right to collect all additional costs, fees and expenses associated with such chargeback, reversal, or recollection, including, without limitation, attorney fees.

IMPORTANT CONDITIONS: Prices are subject to increase prior to the time you make full payment. Prices are not subject to increase after you make full payment, except for charges resulting from increases in government-imposed taxes or fees. By signing the reservation form, you expressly acknowledge your acceptance of these conditions (i.e., increases before full payment and increases attributable to government-imposed taxes or fees after full payment will be your responsibility) applicable to your purchase.

RATES: Rates are based on the minimum number of guests outlined in this document, plus airfare costs, currency exchange rates and other factors and are subject to change. Though it is rare for Classic Escapes to make a price adjustment after promotion of an itinerary, we do reserve the right to assess a surcharge if the minimum is not met, or if increases are forced upon us by airlines or other partners or because of changes in currency exchange rates.

ADDITIONAL FEES: Additional taxes and surcharges that cannot be pre-collected may be charged locally. Cost of passport and visa fees and service charges for obtaining visa fees; excess baggage charges levied by airlines; laundry and other items of a personal nature; optional travel insurance policy(s); or any other costs incurred that cannot be pre-collected are NOT included and are the sole responsibility of the Traveler.

SINGLE SUPPLEMENT: The quoted rate is valid for the first two single rooms booked and on a first-come, first-served basis. If more than two single rooms are needed, an additional supplement may apply. Single accommodations are not guaranteed but will be provided at additional cost if available (see 'Your Journey at a Glance' section for the cost.) The single room supplement pays for privacy, not better accommodations. For passengers who are traveling alone and wish to share a room with another tour member, we will do our best to provide a roommate. However, if this is not possible, you will be required to pay the single room supplement prior to your departure from the USA.

GRATUITIES, ENTRANCE FEES & TAXES: Gratuities for baggage handling, service charges and taxes imposed by hotels, and entrance fees to all points of interest as outlined in the itinerary are included in the final cost. U.S. and foreign airport taxes are included in air costs. Tips to drivers and specialist guide(s) are **not** included and are the sole responsibility of the Traveler.

CANCELLATIONS, DEVIATIONS & CHANGES

TRAVEL INSURANCE: We recommend travel insurance. Travel insurance can provide financial reimbursement should the unexpected occur.

CANCELLATION: Please be aware that most travel bookings are non-refundable and cancelled bookings will incur charges. These charges can be up to 100% of the cost of the booking, regardless of whether travel has commenced. Where we incur any liability for a cancellation fee or charge for any booking that you cancel, you agree to indemnify us for the amount of that fee or charge. Cancellations are only effective upon receipt of written notification. The following per-person fees are applicable:

- Up to 6 months prior to departure (July 27, 2024), \$300 per person administrative fee.
- 179 days to 96 days prior to departure (July 28 to October 19, 2024), \$300 per person administrative fee, plus \$500 non-refundable deposits given to suppliers.
- 95 days to 76 days prior to departure (October 20 to November 8, 2024), deposit is forfeited.
- 75 days to 60 days prior to departure (November 9 to November 24, 2024), 50% refund is possible.
- 59 days or less prior to departure (November 25, 2024), no refund is possible.

These cancellation fees are also in addition to any fees imposed by airlines.

These cancellation fees are also in addition to any fees imposed by airlines.

REFUNDS: While Classic Escapes uses its best endeavors to ensure that all anticipated accommodation is available as planned, there is no claim of any nature whatsoever against Classic Escapes for a refund, in whole or in part, if any accommodation or excursion is unavailable and a reasonable alternative is not found, or if the Traveler is unable to use any service provided in the itinerary.

CHANGES: Once your tour is reserved, changes to the itinerary are possible subject to the availability of air or land space at the time of your request. Should there be any change fees imposed by any airlines or ground operators, or additional costs incurred due to the availability of any space, these costs will be invoiced to you and you will be responsible for payment thereof.

SPECIAL ARRANGEMENTS: Should you wish to make additional travel plans, including specially arranged pre- or post-tour extensions different than those offered in conjunction with your tour, a service charge of \$150 per person (over and above the cost of the services required) will be assessed.

DOCUMENTS

PASSPORTS: All individuals departing from the United States of America must be in possession of a valid passport. Please check that your passport is valid for at least 6 months beyond your intended return date. It is your responsibility to ensure that you have valid travel documentation, including but not limited to passports and visas, which meet the requirements of immigration and other government authorities at every destination. You are responsible for confirming with the United States Department of State or the representative government agency of the country to which you are traveling to confirm the requirements for visas and/or other requirements for admission to your destination. Any fines, penalties, payments, or expenditures incurred as a result of such documents not meeting the requirements of those authorities will be your sole responsibility.

REAL ID: Beginning October 1, 2021, if you plan to use your state-issued ID or license to fly within the U.S., it is your responsibility to make sure it is REAL ID compliant. If you are not sure if your ID complies, please check with your local state Department of Motor Vehicles or visit www.tsa.gov/real-id.

TRAVEL DOCUMENTS: It is the responsibility of each Traveler to obtain and carry a valid passport, visa(s), and all other documents required by applicable government regulations. When traveling domestically or internationally, the U.S. Transportation Security Administration (TSA) and U.S. Department of Homeland Security (DHS) advise that everyone carry acceptable identification in order to board a flight. Acceptable identification can be found at <http://www.tsa.gov/traveler-information/acceptable-ids>. The name, date of birth and gender that appears on the identification card must exactly match the same such data that is listed on airline ticket(s) and booking records. You acknowledge any failure to strictly comply with these requirements may result in denied boarding or an undue delay at an airport security checkpoint causing Traveler to miss flight(s), and subsequent scheduled travel bookings on cruises and tours.

Travel documents include, without limitation, airline tickets, hotel vouchers, tour vouchers, or any other document (whether in electronic form or otherwise) used to confirm an arrangement with a service provider. Travel documents may be subject to certain conditions and/or restrictions such as, but not limited to, being non-refundable, non-date-changeable, and subject to cancellation and/or amendment fees. Travel documents cannot be transferred to another person to use. All airline tickets must be issued in the name of the passport/photo identity holder. An incorrect name on a booking may result in an inability to use that booking and the booking being cancelled. Any errors in names, dates, and timings may result in an inability to use that booking and the booking being

cancelled. Any errors in names, dates, and timings on your documentation will be your responsibility if we are not advised at the time of booking. Please reconfirm your flights at least 24 hours prior to departure.

PRE-DEPARTURE INFORMATION: Upon receipt of your registration and deposit, we will send you an electronic pre-departure packet containing all the information you need to prepare for your tour, including the complete itinerary, packing checklist, required documents, insurance information, etc.

FINAL DOCUMENTS: Electronic final documents and air e-tickets will be sent to you approximately two weeks prior to departure, provided all monies have been paid in full.

TRANSPORTATION

AIR TRANSPORTATION: Your program does not include international airfare. If you require assistance, contact Classic Escapes.

FREQUENT FLYER MILEAGE: Check on the airline's website to enquire who their partners are. Obtain frequent flyer mileage on any of these carriers. Present your frequent flyer card for all flight check-ins and keep the boarding passes until you receive a statement with the mileage credit.

TRANSFERS: Roundtrip airport transfers are included in the tour for guests arriving on group flights. If travelers make their own air arrangements, they will be subject to extra transfer fees.

FLIGHT CONFIRMATION: We strongly suggest that you reconfirm exact flight times with the carrier prior to departure. Air travelers are required to check in at least 2 hours prior to departure time for domestic flights and 3 hours for international flights and must report to the gate at least 30 minutes prior to departure time. Failure to comply may result in the loss of the seat to another passenger.

HAZARDOUS MATERIALS: Federal law prohibits passengers from bringing hazardous materials on the aircraft. Federal law forbids the carriage of hazardous materials aboard aircraft in the passenger's luggage or on the passenger's person. A violation can result in five years' imprisonment and penalties of \$250,000 or more (49 U.S.C. 5124). Hazardous materials include explosives, compressed gases, flammable liquids and solids, oxidizers, poisons, corrosives, and radioactive materials. Examples: Paints, lighter fluid, fireworks, tear gases, oxygen bottles, and radiopharmaceuticals. There are special exceptions for small quantities (up to 70 ounces total) of medicinal and toilet articles carried in the passenger's luggage and certain smoking materials carried on the passenger's person. For further information, each passenger should contact the relevant airline representative(s) on their itinerary. Restrictions on hazardous materials are listed <http://www.tsa.gov/traveler-information/prohibited-items>.

INSECTICIDE NOTICE: Some countries require insecticide spraying of aircraft prior to a flight or while you are on the aircraft. We recommend that you refer to the Department of Transportation's list of airports in countries that require airlines to treat the passenger cabin with insecticides prior to the flight or while on the aircraft available at <https://www.dot.gov/office-policy/aviation-policy/aircraft-disinsection-requirements>.

BAGGAGE & FEES: Additional fees for baggage may apply. Please contact your airline or refer to its website for detailed information regarding its checked baggage policies. On average, international flights from the USA allow one piece of checked luggage, not exceeding 50 pounds, plus a carry-on piece not exceeding 15 pounds; however, we always recommend that you check your airline's policy just before departure, as luggage limitations are always subject to change. There may also be luggage and weight restrictions for your destination and that information will be forwarded to you with your pre-departure material and also listed on your final documents.

LUGGAGE ALLOWANCES ON INTERNAL FLIGHTS: Your journey includes internal flights aboard light aircraft which are designed with a maximum luggage allowance; this is closely monitored by the flight operators for safety reasons. You are allowed one carry-on and one piece of luggage, 15 lbs max, (must fit in your lap) plus 1 checked bag, max 50 lbs. and 62" total linear dimensions (L+W+H), no wider than 30" and no higher than 15". Overweight bags incur an additional \$35 fee, and bags longer than 62" (157cm) total linear dimensions (L+W+H) will not fit on these planes. For full policy details visit <https://www.tropicair.com/>.

AIRLINE CLAUSE: The airlines concerned are not to be held liable for any act, omission, or event during the time the passengers are not on board their planes or conveyance. The passengers' tickets in use by the airline or by other carriers concerned when issued shall constitute the sole contract between the airlines and the purchaser of these tickets and/or passengers.

DELAYS: We cannot be held liable for any delays or additional costs incurred as a result of airlines not running to schedule. Any additional land or air fees imposed on account of airline delays will be borne by the traveler.

TRIP DETAILS

ACCOMMODATIONS: You will have a variety of accommodations during this tour – some will be rustic, while others will be more conventional. All will be comfortable and in keeping with the spirit of this adventure. Accommodations listed in this itinerary are correct at time of writing, but on rare occasions may be substituted for a different property of comparable quality.

MEALS: All meals as specified in the itinerary. Please notify us if you have special dietary needs or requests, and we will do our best to accommodate.

WATER: It is always advisable to drink bottled and/or filtered water when traveling overseas. Safe drinking water will be provided to travelers free of charge in the vehicles and during meals.

PHOTOGRAPHY: The Company reserves the right without further notice to make use of any photograph or video taken on the tour by our photographers without payment or permission. We guarantee that no photographs of a compromising nature will be used.

GUIDES: If one of Classic Escapes' guides are unable to take a trip due to circumstances out of our control (i.e., illness, etc.), we reserve the right to substitute with another guide.

TOUR ITINERARY: To the best of our knowledge the itinerary is correct at the time of printing. We cannot be held responsible for any inaccuracies or changes that may occur after printing.

HEALTH AND SPECIAL REQUIREMENTS: You must have the proper immunizations and health screenings and required documentation of such immunizations and screenings before travel. It is your responsibility to ensure you are aware of any health requirements, health advisories, or health travel restrictions applicable to your travel destinations and to ensure that you carry all necessary vaccination documentation. Classic Escapes is not responsible for providing you with this information. Travel carriers and local authorities at travel destinations may require specific testing prior to boarding and/or upon arrival at your destination, including, but not limited to, a temperature check as a result of the COVID-19 pandemic. You may be denied entry onto your carrier and/or entry upon arrival at your destination or be required to self-quarantine at your destination and upon your return to the United States. You must comply with local government regulations. Any additional costs are your responsibility. Check the State Department Web site <http://travel.state.gov>, for relevant information relating to travel to specific destinations, and the Center for Disease Control <http://wwwnc.cdc.gov/travel/> relating to health issues related to travel.

You must be in good physical and mental health. It shall be your duty to inform us in case you have any medical condition that may affect your ability to enjoy and pursue fully the services of Classic Escapes. By registering for a Classic Escapes service/program, you certify that you do not have any mental, physical, or other condition or disability that would create a hazard for yourself or others.

COVID-19 ACKNOWLEDGEMENT

In order to participate in one of our tours, travelers must certify that they have not recently been treated for, nor are aware of any physical or other condition or liability that would create a hazard to themselves or other members of the tour and agree to comply with all health protocols as directed by Classic Escapes and their representatives during their journey. Travelers must maintain suitable physical distancing and frequently wash or sanitize hands throughout their journey. Travelers MAY be required to wear masks in vehicles, indoor areas, and any outdoor areas where physical distancing is not possible and in accordance with local regulations. Noncompliance with these procedures will result in the suspension of the journey. **Travelers voluntarily assume all risks and related expenses in the event that they or any member of their traveling party require testing, quarantine, or become infected with COVID-19.** Classic Escapes will endeavor to provide assistance wherever possible.

TRAVEL INSURANCE: For your protection, we strongly recommend that you purchase trip cancellation and travel accident insurance. However, no representation or description of the insurance made by Classic Escapes to you constitutes a binding assurance or promise about the insurance. Classic Escapes is not an insurance company and has no responsibility for the submission, payment, or adjustment of any insurance claims. Any insurance claims that may fall under the relevant travel insurance policy must be submitted to the insurance company identified in the policy. We recommend the following service – please visit the website to enroll: <http://www.travelguard.com/classicescapes/>. Any questions about what travel insurance does or does not cover should be addressed directly to the travel insurance company, Travel Guard at 1-866-385-4839 and reference ARC #71298. If you decline insurance coverage, you will personally assume full responsibility for any financial loss associated with your travel arrangements, and you could lose your travel investment and/or have to pay more money to correct the situation. **THE PURCHASE OF TRAVEL INSURANCE IS HIGHLY RECOMMENDED ON ALL TRIPS.**

EMERGENCY EVACUATION COVERAGE: For the convenience of our travelers, Classic Escapes provides a complimentary Medical Insurance Plan during your trip via Travel Guard Group, Inc. This includes:

- Emergency evacuation insurance up to \$100,000.
- Up to \$25,000 medical expense and up to \$500 dental expense coverage subject to the terms and limitations of the insurance policy.
- 24-hour worldwide travel and medical assistance.

Medical Plan (926801)

Please click here to view complete coverage of details.

https://webservices.travelguard.com/Product/FileRetrieval.aspx?CountryCode=US&StateCode=AL&ProductCode=926801&PlanCode=NW&FileType=PROD_PLAN_GM

TERMS & CONDITIONS

TOUR OPERATOR: Classic Escapes acts as a tour operator/travel agent only. Classic Escapes does not own, operate, manage, or control any independent suppliers of services and is not liable for their acts or omissions. Classic Escapes' obligations to you are to make travel bookings on your behalf and to arrange relevant contracts between you and other travel service providers. We have no responsibility for these services, nor do we have the authority to make any warranty or representation regarding their standard. Requests cannot be guaranteed. All bookings are subject to the terms and conditions and limitations of liability imposed by these travel service providers. You understand that your legal recourse is against the specific provider, not Classic Escapes. Conditions can change rapidly in a country at any time. It is your responsibility to check the USA Government Travel advisories for your intended destination at <https://travel.state.gov/content/travel.html>.

RESPONSIBILITY OF THE COMPANY: We always do our best to make sure your travel arrangements are satisfactory. However, Classic Escapes and its employees, shareholders, subsidiaries, affiliates, officers, directors, successors, agents, and assigns do not own or operate any third-party entity that provides goods and services for your travel, including without limitation lodging facilities, airline, vessel, motorcoach, or other transportation companies, local ground operators, providers, food service providers, etc. All such persons and entities are independent contractors and are in no way affiliated to Classic Escapes. We are not liable for any delays or additional costs incurred by the Traveler as a result of any actions or occurrences by any of the foregoing third party entities.

LIABILITY: Classic Escapes is not liable for any negligent or willful act or failure to act of any travel service provider or of any third party.

Because Classic Escapes does not have the right to control the operations of such travel service provider or any third party, you agree that Classic Escapes is not liable for any personal injury or property damage which may arise out of these services. Classic Escapes hereby disclaims any liability whether based on contract, tort, strict liability or otherwise, including without limitation liability for any direct, punitive, special consequential, incidental or indirect damages, in connection with the goods or services provided by any supplier booking through Classic Escapes, including without limitation liability for any act, error, omission, injury, loss, accident, delay or irregularity which may be incurred through the fault, negligence, willful acts, omissions or otherwise of such travel service provider or any third party, or their respective employees, agents, servants, or representatives, including, without limitation, their failure to deliver or their partial or inadequate delivery of services, their cancellation and refund policies, fuel increases, bankruptcy or cessation of operations and other matters outside of Classic Escapes' control, and you hereby exonerate Classic Escapes from any liability with respect to the same.

FORCE MAJEURE: Classic Escapes will not be in breach of these terms and conditions or otherwise be liable to you, for any failure or delay in performing an obligation under this Agreement that is due to any of the following causes, to the extent beyond its reasonable control: acts of God, accident, riots, war, terrorist act, illness, disease, epidemic, pandemic, quarantine, civil commotion, breakdown of communication facilities, including web host and internet service provider, breakdown or malfunction of equipment, destruction of or serious damage to facilities, natural catastrophes including, but not limited to extreme weather events, floods and volcanic eruptions, governmental acts or omissions, changes in laws or regulations, national strikes, fire, explosion, generalized lack of availability of raw materials or energy, and any other unforeseen circumstance which is beyond the control of Classic Escapes. **THE PURCHASE OF TRAVEL INSURANCE IS HIGHLY RECOMMENDED ON ALL TRIPS.**

REFUSAL OF SERVICE: Service providers reserve the right to refuse service to travelers at their sole discretion, including, without limitation, if the traveler: (i) lacks proper documentation for the country of destination; (ii) has a contagious disease; (iii) is under the influence of alcohol, drugs, or narcotics; and/or (iv) manifests disruptive and/or unruly behavior. Classic Escapes assumes no liability for the acts of the service provider in refusing service.

ELECTRONIC OR HANDWRITTEN SIGNATURE: Both parties agree that you may acknowledge and agree to these Terms: (i) electronically; (ii) by handwritten signature; (iii) by any other electronic means, including, without limitation, via email acceptance of these Terms; or (iv) by your implied consent deemed via your actions, which shall include without limitation the payment of the

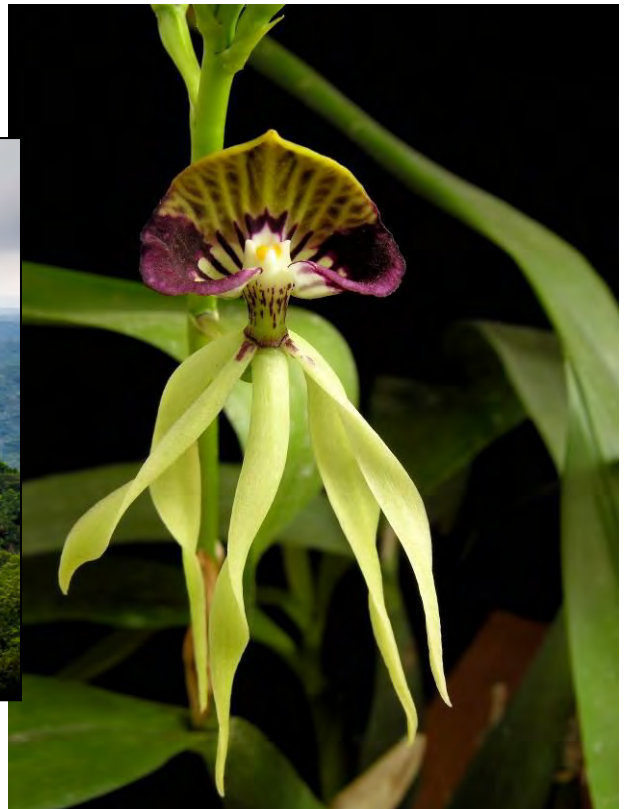
Schedules, accommodations and prices are accurate at the time of writing. They are subject to change.



invoice in part or in full or your use of the services provided by Classic Escapes or any other travel supplier related to your booking. All such means will be deemed to constitute effective acknowledgement and execution of this Agreement and shall be sufficient to bind the parties to the terms and conditions of this Agreement.

RESERVATION OF RIGHTS: We reserve the right, in our sole discretion, to change these Terms and Conditions at any time. Updated versions of the Terms will be provided to you, will be posted on our website, and are effective immediately on posting.

GOVERNING LAW: The construction, validity, and performance of these Terms and any disputes between the parties shall be governed by and construed according to the laws of the State of New York, without giving effect to its conflict of law principles, and any federal laws applicable therein. Both parties submit to the exclusive jurisdiction of the courts of the State of New York with respect to any legal proceedings relating to these Terms.



RESERVATION FORM:

ROGER WILLIAMS PARK ZOO ~BELIZE

25SAZ0123/RWPZ

Enclosed is my deposit for \$ _____ (\$1,600 per person) to hold _____ place(s) on the tour to Belize departing on January 23, 2025. Check Your Journey at a Glance for all costs associated to this tour.

Final payment due date is **October 20, 2024**

Please make check payable to CLASSIC ESCAPES and mail to 191 W Poplar Street, Floral Park, NY 11001

Charge deposit to: MasterCard Visa American Express Discover

(Credit Card Authorization form needs to be completed and returned to Classic Escapes via mail or fax to 718-204-4726)

Deposits can be made by credit card; however, **all final payments are required to be made by check or money order only.**

A copy of your passport must accompany this form to confirm reservation. Upon receipt of your signed reservation form, passport copy and deposit we will, subject to availability, reserve your spot on the tour. Passport must be valid for at least 6 months after the return of your trip and have four consecutive blank pages in the visa section.

1) NAME (As appears on passport): Mr. Mrs. Ms. _____ Date of Birth (M/D/Y) ____/____/____

2) NAME (As appears on passport): Mr. Mrs. Ms. _____ Date of Birth (M/D/Y) ____/____/____

STREET ADDRESS: _____

CITY: _____ STATE: _____ ZIP: _____

PHONES: HOME: () _____ OFFICE: () _____ MOBILE: () _____

E-MAIL ADDRESS: _____ FAX: () _____

- I certify that I have not recently been treated for, nor am I aware of any physical or other condition or liability that would create a hazard to myself or the other members of this tour.
- The two of us above are sharing a room and, where possible, would like a room with: ONE TWO Beds (Make one selection only)
- I am sharing with _____ (form sent separately)
- I need assistance in securing a roommate. I understand if one cannot be located for me by final payment date, I agree to pay the additional single supplement amount listed on the Journey at a Glance page.
I prefer to share with: Smoker Non-smoker
- I desire single accommodations, if available, and will pay the single supplement additional cost

CLASSIC ESCAPES CAN ASSIST WITH INTERNATIONAL FLIGHT ARRANGEMENTS FROM ANY US CITY.

- YES, I WILL REQUIRE ASSISTANCE. PLEASE SEND ME INFORMATION TO DEPART FROM _____
I REQUIRE: ECONOMY BUSINESS/FIRST CLASS

We'd love to send you exclusive offers and the latest news from our partners around the world. We'll always treat your personal details with the utmost care and will never sell them to other companies for marketing purposes. **No thanks, I don't want to hear about offers and news.**

All rates quoted are based on tariffs and value of foreign currencies in relation to the U.S. dollar in effect as of March 1, 2024, and are subject to change. Cancellation penalties are applicable as outlined in the Conditions of Travel. **WE STRONGLY RECOMMEND THAT YOU OBTAIN TRAVEL INSURANCE. RESERVATIONS ARE ACCEPTED SUBJECT TO TOUR CONDITIONS AND WILL BE CONFIRMED ONLY IF ACCOMPANIED BY COMPLETED FORM SIGNED BY THE TOUR PARTICIPANT(S).**

SIGNATURE: _____ DATE: _____

SIGNATURE: _____ DATE: _____

CLASSIC ESCAPES INC.
191 W Poplar Street,
Floral Park, NY 11001

(We recommend that you keep a copy of your selections as noted above for your future reference)

ROGER WILLIAMS PARK ZOO~ BELIZE
JANUARY 23 TO FEBRUARY 1, 2025



191 W Poplar Street, Floral Park, NY 11001
T: (718) 280-5000; (800) 627-1244
F: (718) 204-4726
E: info@classicescapes.com

CREDIT CARD PAYMENT AUTHORIZATION

Please Note: If you wish to charge your deposit to Visa, MasterCard, American Express or Discover, this authorization form MUST be completed and returned to us along with your reservation form before we can process your application.

I authorize (**Classic Escapes Inc.**) to charge my VISA/MASTERCARD/DISCOVER/AMEX listed below:

Name appearing on credit card _____

Card number _____ Expiration date _____

Card Verification Number* _____ Card Type _____

Billing address of credit card _____

Amount of transaction _____

Services rendered/Items purchased _____

Phone number _____

Signature _____ Date _____

***How To Locate Your Card Verification Number:**

(Visa, MasterCard, Discover: Locate the credit card number on the back of the card above the signature box. Enter the 3 digit number which follows the credit card number. **American Express:** Enter the 4 digit number found directly above and to the right of the credit card number.)

I understand that all rates quoted on this tour I'm making a payment on are based on tariffs and value of foreign currencies in relation to the U.S. dollar in effect as of March 1, 2024, and are subject to change. Cancellations are only effective on receipt of written notification. The following per person fees are applicable on this tour:

- Up to 6 months prior to departure (July 27, 2024), \$300 per person administrative fee.
- 179 days to 96 days prior to departure (July 28 to October 19, 2024), \$300 per person administrative fee, plus \$500 non-refundable deposits given to suppliers.
- 95 days to 76 days prior to departure (October 20 to November 8, 2024), deposit is forfeited.
- 75 days to 60 days prior to departure (November 9 to November 24, 2024), 50% refund is possible.
- 59 days or less prior to departure (November 25, 2024), no refund is possible.

These cancellation fees are also in addition to any fees imposed by airlines.

PLEASE NOTE: At times, our bank requires photocopy of credit card (both sides) and driver's license or document showing signature of cardholder, in order to process the charge. While it is not required at this time that you include these materials with your deposit, if our bank requests it, we will contact you for these copies.