



Nature & Cultural Journeys  
for the Discerning Traveler

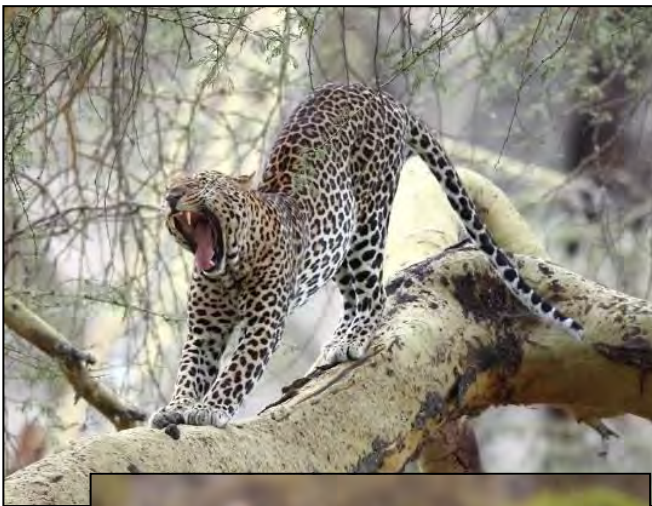
YOU ARE CORDIALLY INVITED TO JOIN  
**MIKE & EILEEN CROWTHER**

ON AN EXCLUSIVE SAFARI TO

# KENYA

*LUXURY UNDER THATCH & CANVAS*

NOVEMBER 10 TO 21, 2024



191 W Poplar Street, Floral Park, NY 11001  
T: (718) 280-5000; (800) 627-1244  
F: (718) 204-4726  
E: [info@classicescapes.com](mailto:info@classicescapes.com)  
W: [www.classicescapes.com](http://www.classicescapes.com)

For more information, find us on:  
[facebook.com/Classic.Escapes.inc](https://www.facebook.com/Classic.Escapes.inc)  
[twitter.com/classicescapes](https://twitter.com/classicescapes)  
[instagram.com/classic\\_escapes](https://www.instagram.com/classic_escapes)

## YOUR NATURALIST GUIDE: JAMES NJUNGO MUNGAI

---

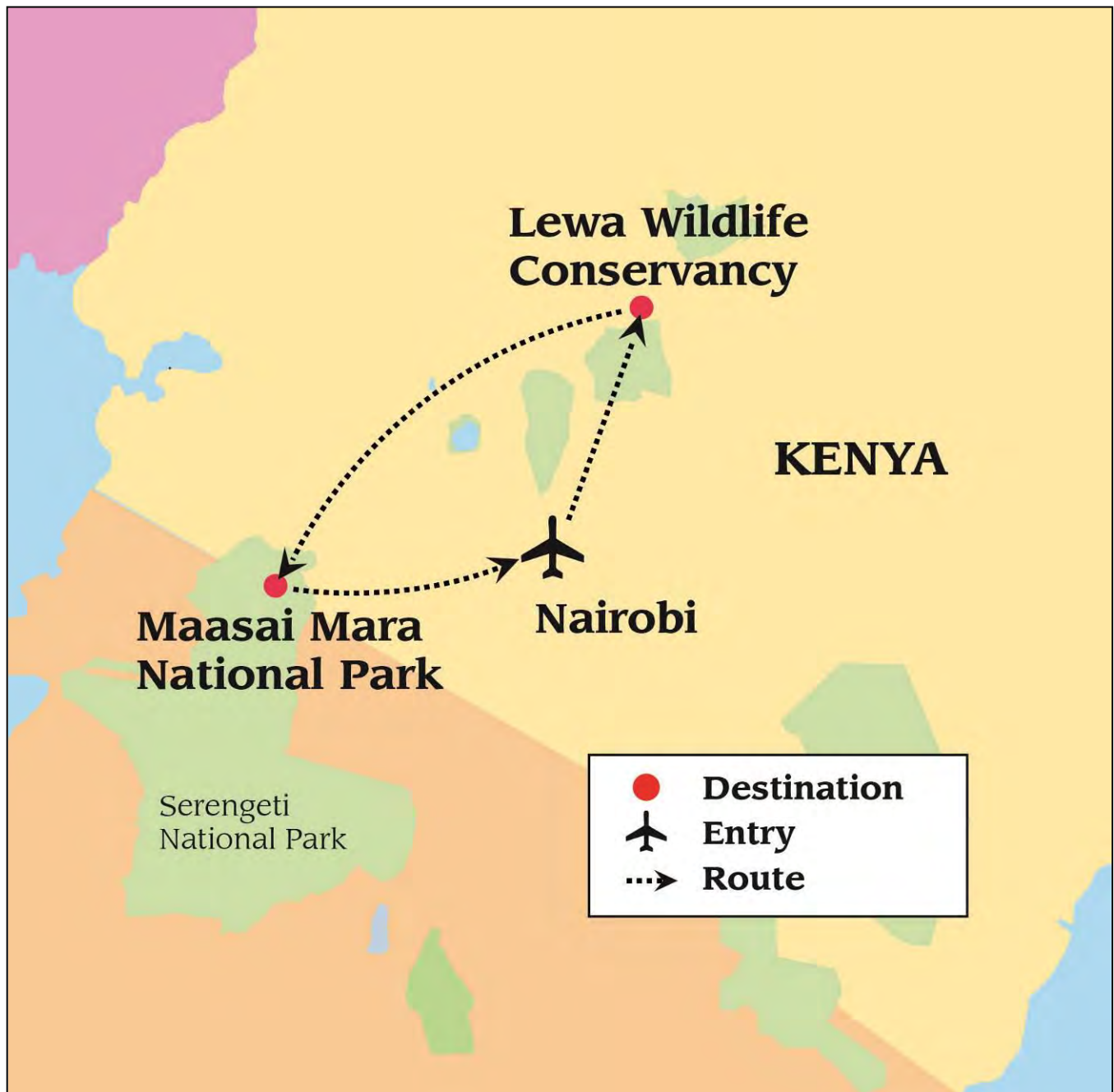
James was born on the Kikuyu escarpment bordering Nairobi to the northwest. At an early age in primary school in the 80's, he started visiting the National Museums of Kenya and Nairobi National Park as a Scout member. This is how he fell in love with nature, a love that he has nurtured throughout his life. James completed secondary school in 1992 and had no doubt about what he wanted to do in life, so he transferred his hobby into a permanent career. He spent much time in the libraries of the Museums studying Natural History between 1993 and 1997, tackling such subjects as mammalogy, entomology, botany, osteology, ornithology, anthropology and geology. In 1997, he took his first exams in Tour Guiding, and is among the few Gold Level Guides out of thousands under the membership of Kenya Professional Safari Guide Association (KPSGA).

James has conducted Bird, Tree and Insect walks all over the country, from Mt. Kenya to the Indian Ocean. His enthusiasm has made him a presenter where nature is the theater. James is fluent in English, French, Kiswahili and Kikuyu (his local dialect), with an ambition to learn as many foreign languages as possible so he can interpret the natural life to all visitors from around the globe.



## A MAP OF YOUR JOURNEY TO KENYA

---



## YOUR ITINERARY

---

### DAY 1~SUNDAY~ NOVEMBER 10

#### USA/EN ROUTE

Your adventure begins as you board your overnight flight to Nairobi. (Meals Aloft)

### DAY 2~MONDAY~ NOVEMBER 11

#### NAIROBI



Arrive in Nairobi, the safari capital of East Africa. Upon arrival, you are welcomed by your Classic Escapes expert driver/guide and escorted to your luxurious hotel. The remainder of your afternoon is at leisure where you are free to settle in, relax and enjoy your fabulous accommodations.

*The Karen Blixen Cottages are located about a half mile from the famous Karen Blixen Museum in Karen, a beautiful, peaceful suburb approximately 20 miles from downtown Nairobi. The cottages are in the midst of one of the oldest formal gardens in Kenya which have huge jacaranda, candelabra, cactus, bottlebrush, and other trees. Over 200 types of flowers bloom through the year and numerous bird feeders attract hundreds of varieties of birds. The cottages have been designed after the historic Swedo House to give a sense of reliving history in elegant style. All well-appointed cottages have hi-beam ceilings with fireplaces, wood, and mazeras stone floors as well as all modern amenities. In addition, all cottages have a verandah for relaxing while enjoying the birds, butterflies, and flowers of the garden. Overnight at the KAREN BLIXEN COTTAGES. (D)*  
<https://www.karenblixencooffeegardens.com/>



### DAY 3~TUESDAY~ NOVEMBER 12

#### NAIROBI

Your day begins with a game drive in Nairobi National Park, unique in that the Park is the only protected area in the world with a variety of animals and birds close to a capital city. As expected, the park is a principal attraction for visitors to Nairobi. The park also serves many residents and citizens living in the city as it has a diversity of environments with characteristic fauna and flora. Open grass plains with scattered acacia bush are predominant. The western side has a highland dry forest and a permanent river with a riverine forest in the south. In addition, there are stretches of broken bush country and deep, rocky valleys and gorges with scrub and long grass. Man-made dams have also added a further habitat favorable to certain species of birds and other aquatic life forms. The dams also attract water dependent herbivores during the dry season.



The park has a rich/diverse birdlife with 400 species recorded; however, all species are not always present, and some are seasonal. Northern migrants pass through the park primarily during late March through April. Nairobi National Park is one of the most successful of Kenya's rhino sanctuaries. It is already generating a stock for reintroduction in the species' former range and other upcoming sanctuaries. Due to this success, it is one of the few parks where a visitor can be certain of seeing a black rhino in its natural habitat.

Continue to The Sheldrick Wildlife Trust at the edge of Nairobi National Park, which is a nursery and rehab center for infant elephants that have lost their families, as well as rhinos and occasionally zebras and other wildlife. Daphne Sheldrick was the first person to successfully master the art of raising orphaned infant elephants. The wife of the famous naturalist David Sheldrick, Daphne had dedicated her life to conservation. David was the founding Warden of Kenya's giant Tsavo East National Park, in which he served from 1948 until his death in 1976. Daphne continued her involvement till her death in April 2018 and had a real impact on the lives of elephants and rhinos, which would have normally died due to human poaching and surrounding population conflict. Their daughter, Angela, now continues this most important work. You'll enjoy a visit with the elephants as they're brought by their keepers to the waterhole and salt lick to be fed and socialize – see how they roll in the mud and play fight and their affectionate interaction with their keepers. Learn the habits of the orphans and many interesting facts about their upkeep. These infants are eventually released into the wild at Tsavo East National Park and end up in the care of other orphans who have been successfully reintroduced to the wild.



Enjoy lunch at Karen Blixen Coffee Garden and resume your sightseeing at the African Fund for Endangered Wildlife (AFEW Kenya) Giraffe Centre near Giraffe Manor where you may hand-feed the Rothschild giraffes that live here. The giraffes were brought here by Jock and Betty Leslie-Melville, who founded AFEW and built the Giraffe Centre to help educate young African children about wildlife conservation. The Rothschild giraffe is the tallest species and may reach 18 feet in height, but you can see eye to eye with them on the elevated walkway at the center.



Visit the Karen Blixen Museum, the former home of the Danish Baroness, Karen Blixen (1885-1962) author of the book *Out of Africa*. Karen lived in this green residential area from 1914 to 1931 when she left permanently for Denmark. The house was built in 1910 and when Ms. Blixen bought the property, it had 6,000 acres of land but only 600 acres were developed for growing coffee; the rest was retained under natural forest. The house was bought by the Danish Government, which offered it back to Kenya in 1963. In 1986, the house, formerly used as a school, was transformed



into a National Museum. Much of the original furniture is on display in the house and most objects were either used by Karen herself or for the shooting of the film, "Out of Africa."

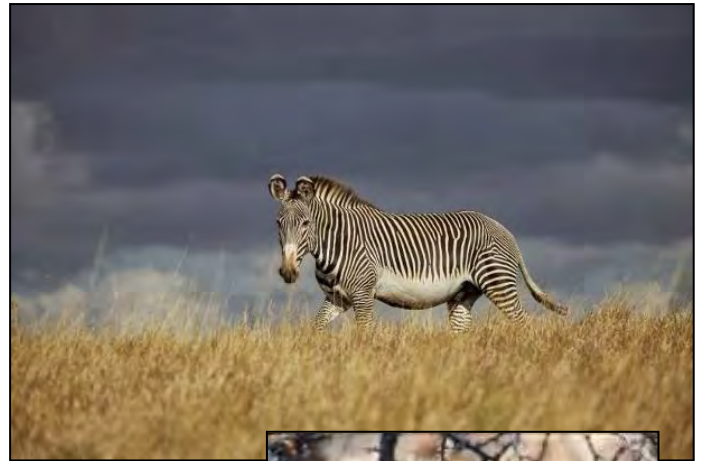


Your welcome dinner has been prepared for you at the Carnivore Restaurant. Carnivore's specialty is meat and features an all-you-can-eat meat buffet. Every type of meat imaginable is roasted on traditional Maasai swords (skewers) over a huge, visually spectacular charcoal pit that dominates the entrance of the restaurant. There are vegetarian dinner choices as well. Overnight at the KAREN BLIXEN COTTAGES. (B,L,D)

#### **DAYS 4/5/6~ WEDNESDAY/THURSDAY/FRIDAY ~ NOVEMBER 13/14/15**

##### **LEWA WILDLIFE CONSERVANCY ~ LEWA SAFARI CAMP**

Your morning flight takes you to Lewa, a private wildlife sanctuary in the Northern District of Kenya, a World Heritage Site. This is an area of open plains, long, waving yellowy-gray grasses, and gently rolling hills, rising in the distance. As one of Kenya's major private conservation successes located at the foot of Mt. Kenya, Lewa Downs has been the Craig family home since 1924 when the Craig grandparents came from England and began raising cattle here. "Leave room for the wildlife" has been the Craig ethic, as the area is committed to the conservation of wildlife and diverse habitats found on the northern slopes of Mt Kenya. Endangered species abound in the Lewa Wildlife Conservancy, most famous around the world for its rhino conservation.



While you are here, you may see everything from elephant and rhino, to dik-dik, reticulated giraffe, eland, hartebeest, gerenuk, warthog, impala, Grant's gazelle, Cape buffalo, and bushbuck. Also, two species of zebra graze the plains: Burchell's and Grevy's. Lion, leopard, and cheetah may be sighted plus, the elusive and magnificent greater kudu. You will be able to explore the ranch on foot, horseback, or with a special four-wheel drive vehicle (some at additional cost.) As you journey through the ranch, your guides point out the unique relationships between the animals and the plants in the area, from the tiny dung beetle to the mighty lion. The wildlife viewing here can be excellent, especially for black or white rhino as well as gerenuk, Besia oryx, and Somali ostrich. The Lewa swamp hosts a small population of sitatunga where a small, elevated blind has been built to offer visitors opportunities to view this rarely seen semi-aquatic antelope.



A night drive is another unique experience; you may see nocturnal animals such as aardvark, aardwolf, genet, caracal, porcupine, spring hare, and galagos. During your drive, stop and feast your eyes on the brilliant star-studded sky, also take a moment to absorb the wondrous African night. This is definitely what Mother Nature intended.

*You will stay at the Lewa Safari Camp, which features large, tented bedrooms with verandahs and full en-suite bathrooms. Set in 65,000 acres of private protected wilderness, this camp will give you comfort and adventure all in one. The eleven en-suite tents can be laid out for double or twin occupancy, accommodating triples for children under 16. For a more spacious suite, you can have the opportunity to upgrade at an extra fee and stay in a family suite, which offers a main bedroom, an en-suite bathroom, and a spacious verandah.*

Overnights at ELEWANA'S LEWA SAFARI CAMP, in safari tents. (B,L,D Daily)

<https://www.elewanacollection.com/lewa-safari-camp/at-a-glance>



**DAYS 7/8/9/10~SATURDAY/SUNDAY/MONDAY/TUESDAY ~ NOVEMBER 16/17/18/19**  
**LEWA WILDLIFE CONSERVANCY/MAASAI MARA~ SAND RIVER CAMP**

Wing your way to Kenya's most famous wildlife reserve; known as the "Jewel of Africa" and setting for the film *Out of Africa*. It is classic savannah – grasslands, where animals are plentiful and the vistas spectacular. In this dreamlike land, animals live in freedom, and the Maasai tend their cattle in perfect harmony, all sharing the same land with total understanding. You will have four days of game-viewing opportunities in the Maasai Mara Game Reserve, a site with one of the largest and the most spectacular animal migrations in the world. The reserve is inhabited by many of Africa's most popular wild animals, including lions, cheetah, elephant, leopard, black rhino, and hippo. There are also over 500 resident species of birds in the park including ostrich, lark, and sunbird.



The area is famous for rolling grassland and for the Mara River, which runs through the reserve from North to South. The game reserve which covers an area of 700 square miles forms part of the Serengeti ecosystem and hence hosts the world-famous spectacle of the annual migration of up to two million wildebeest, thousands of zebras, and an escort of carnivores from the Serengeti plains, following the rains and succulent new grass. A costly trek as many of the lame, laggard and sick will fall prey to the ravaging pack of predators and many more will die in the swirling flood waters of the Mara River as they try to cross it. You will be in the Maasai Mara during the tail end of the migration, when the herds are returning to the Serengeti in Tanzania, and while we cannot guarantee you crossings, your game-viewing will be spectacular, not only because you should be seeing countless animals, but also the resident population for zebra and wildebeest will be there, along with the predators.

*The Elewana Sand River is located within the Maasai Mara National Reserve sitting at the banks of the river where it takes its name from and close to the Serengeti border. The luxury camp comprises of 16-tented accommodations, including one family tent, each divided into two separate but adjoining campsites, with each area possessing its own designated dining and public areas, thereby creating an increased sense of exclusivity and privacy. Beautiful antiques adorn the comfortable sitting area and indoor/outdoor dining area, transporting you to the heyday of classic safaris.*

Overnights at ELEWANA SAND RIVER MAASAI MARA, in safari tents. (B,L,D Daily)

<https://www.elewanacollection.com/sand-river-masai-mara/at-a-glance>



**DAY 11~ WEDNESDAY~ NOVEMBER 20**

**MAASAI MARA/ NAIROBI/ EN ROUTE**

Enjoy the last chance to photograph that awesome sunrise before flying back to Nairobi. A dayroom will be supplied for you at the CROWNE PLAZA before your transfer to the airport for your late evening flight home. As your journey comes to an end, you say a fond farewell to your driver/ guide and promise to come back in the not-too-distant future. (B, Meals Aloft)

**DAY 12~ THURSDAY~ NOVEMBER 21**

**USA**

Today you land in the USA bringing with you the memories of all the wonderful sights of East Africa. (Meals Aloft)



## OPTIONAL BALLOON SAFARI OPTIONS IN KENYA

Experience an exhilarating balloon safari for the most incredible way of viewing wildlife. It begins in the early morning after you observe the inflating of the balloon, and you have an hour of uninterrupted views of wildlife from the air – the best way to see the incessant movement of animals and the fabulous vistas of Kenya. During the flight, you will ascend to a high altitude to take in an amazing panoramic view and then descend to treetop level and silently glide above the wildlife below. Upon landing, enjoy a “bubbly” brunch, set especially for you in the middle of the plains. Zebra and elephants may be your dining guests, and Africa’s colorful birds may vie for a crumb of your bread. You then meet with your driver/guide and continue your safari. Many consider this one of the most memorable experiences of their safari.



Flying high up in the skies of the **Maasai Mara Game Reserve**, you view an endless magical array of savannahs, rivers, forests, and escarpments. If your visit is between July and October, the Mara plays host to the great migration, and there’s nothing like this unparalleled phenomenon of migrating herds of zebra, wildebeest, and gazelle to view from the air. But whether the migration is in the Mara or not, watching predators such as lions and cheetah hunting their prey, and looking for all the marvels of the bush, is exciting and never gets old!

We suggest booking in advance to avoid disappointment. At present, the costs are as follows:

- **Maasai Mara** with collection from your lodge – Sand River Camp: \$500 per adult (including children 12 and over and \$300 per child ages 3-11 years who must be accompanied by an adult on the balloon).
- **These prices are as of December 21, 2023 and subject to change.**

Reservations for this excursion are necessary before departure from the USA if you wish to be guaranteed a seat. Full payment must be forwarded to CLASSIC ESCAPES INC. 191 W Poplar Street, Floral Park, NY 11001 to be received at least three weeks prior to departure. If your trip does not materialize due to weather or other reasons, your payment will be refunded upon returning to the U.S.A. However, if you should cancel for any reason, payment is non-refundable.



## SAFARI AIR LUGGAGE RESTRICTIONS

**It is of vital importance that all guests traveling to East Africa strictly adhere to the luggage limits and regulations as stipulated below.**

<b>LUGGAGE WEIGHT LIMIT PER PERSON *</b>	<b>33 Lbs. (15 kgs.)</b> – total weight inclusive of luggage and hand luggage/camera equipment. We will buy some extra seats to bring this total to 50 lbs. maximum.
<b>LUGGAGE TYPE</b>	Soft sided bags – no hard-shelled bags, wheels or frames allowed.
<b>LUGGAGE DIMENSIONS**</b>	12 inches wide x 12 inches thick x 27 inches long.

**PERSONAL WEIGHT ALLOWANCES ON INTERNAL FLIGHTS:** Your journey includes internal flights aboard light aircraft which are designed with a maximum body weight and luggage allowance; this is closely monitored by the flight operators for safety reasons. If your personal weight exceeds **85 kilos (187 lbs.)** it may be necessary to purchase an extra seat and your Classic Escapes Journey Manager will contact, you should this be necessary.

**Please note:**

\*This is the total weight including both luggage and hand luggage/camera equipment. This is a safety requirement due to the sensitive weight and balance checks on the small aircraft and must be strictly adhered to. Travelers who require additional luggage must pre-book and pay for this on confirmation of the reservation. We would like to remind you that laundry services are available in all camps and lodges.

\*\*Please keep in mind that the baggage compartments on most of the light aircraft are only 25cm (10 inches) high, so the pilots must have the ability to manipulate the bag into the compartment.



### HANDLING OF INCORRECT LUGGAGE ON ARRIVAL

The carriage of excess baggage is at the sole discretion of the Company after taking into consideration the aircraft being used and the number of passengers booked. When excess baggage is carried it will be charged at the prevailing rate. Excess luggage is charged at USD \$3.00 per kilogram (2.2 lbs.). Guests who are unable to depart on the scheduled charter will be given the option to book a private charter at additional costs to be paid directly prior to departure and subject to the availability of aircraft at the time of booking these flights. No refunds on the costs paid for scheduled charters that were missed due to their incorrect luggage and/or accommodation not provided due to this delay will be provided.

### ASSISTANCE WITH BAGGAGE PRIOR TO ARRIVAL

Should guests be traveling with the incorrect luggage and require assistance with storage (which we offer at no additional cost) or transportation to their point of departure from East Africa (transportation costs apply), this can be arranged provided this has been brought to our attention prior to their arrival in East Africa, preferably at the time of final booking confirmation.

## THINGS YOU NEED TO KNOW ABOUT EAST AFRICA

---

### Participants

- Participants must be able to climb in and out of mini-buses unassisted. They should also be able to tolerate riding on uneven, bumpy dirt roads for long periods of time (6-9 hours maximum), as well as some off-road experiences when opportunities allow.
- Participants should also be able to stand and/or walk moderate distances at an easy pace for up to a few hours at a time when visiting villages, towns, or other sites. Some, if not most, of this walking may be on uneven ground or uphill, often at higher elevations and altitudes that many people are not used to.

### General

- True adventure in travel can sometimes be accompanied by unexpected changes in conditions, itineraries, and occasionally your accommodations.
- Participants should travel with a spirit of adventure and flexibility. Remember to pack your patience and sense of humor! Be willing to look past self-imposed ideals of Western amenities and do not compare these new experiences with your life back home. Travel often includes visiting destinations with modest infrastructures and a bending definition of comfort.
- That being said, some locations are nestled in absolute luxury where pampering is the norm. Participants should generally be in good health and prepared to travel to locations without medical facilities.

### Air Schedules

The cost of your program does not include international airfare. If you require assistance, please contact Classic Escapes at 718-280-5002 and we will happily provide air quotes to you. You may make your own international air arrangements, but please ensure you arrive/depart on the correct dates. Contact your Journey Manager at Classic Escapes to verify the dates to ensure there are no errors. **The start and end city for the land-only program are Nairobi, Kenya.**

*Upon registration, you must provide your full legal name as it appears on your passport. In the event an airline ticket is issued with incorrect information you have provided, you will be responsible for charges associated with reissuing the ticket.*



## INCLUSIONS

---

- Superior accommodations throughout as indicated or similar.
- Flight between Nairobi/Lewa, Lewa/Maasai Mara and Maasai Mara/Nairobi.
- Mike & Eileen Crowther will escort the tour.
- Services of Professional Naturalist Guide, James Njungo with 10 travelers.
- All meals while on safari. Other meals are as specified in the itinerary.
- All wildlife viewing by 4X4 land cruisers, driven by professional rangers.
- Complimentary bottled water in vehicles.
- All applicable hotel and lodge taxes and gratuities for baggage handling.
- All park entry fees.
- Complimentary baggage tags and a water bottle.
- Complimentary emergency evacuation insurance.

## EXCLUSIONS

---

- Round trip air transportation from the USA. If you require assistance with air arrangements, contact Classic Escapes.
- Gratuities to drivers and other conveyance attendants. Gratuities should only be given as a reward for exceptional service and is at your discretion. *We estimate \$15 per person/per day for the specialist guide. \$15 per person/per day for the safari driver. \$10 per person/per day for the camp staff. \$5 per person for each arrival and departure transfer from the airport / hotel. These are daily per service estimates and an exact tipping chart will be detailed on your final itinerary.*
- Passport and visa fees and service charges for obtaining visas. Visas are required for US citizens traveling to Kenya.
- Excess baggage charges levied by airlines.
- Meals and beverages, other than those specified.
- Laundry and other items of a personal nature.
- Personal and baggage insurance.
- Cost for anything not specifically mentioned in the listing above.

<p><b>Please Note That The Itinerary Sequence Is Correct At The Time Of Writing But Is Subject To Change.</b></p>
---



# YOUR JOURNEY AT A GLANCE

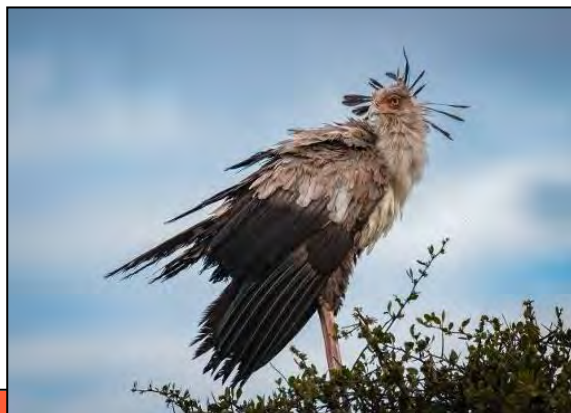
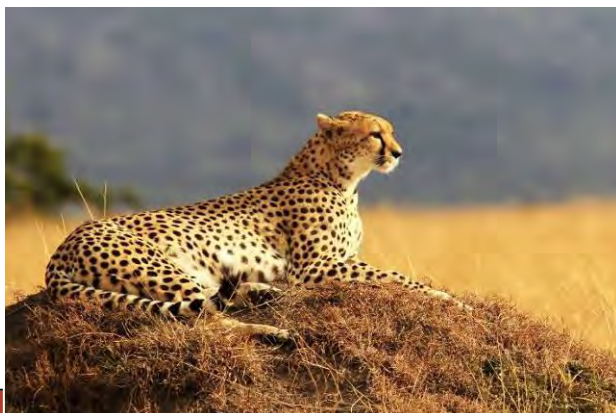
**DESTINATION:** KENYA, INCLUDING NAIROBI, LEWA CONSERVANCY & MAASAI MARA

**HOSTED BY:** MICHAEL CROWTHER

**DATES:** NOVEMBER 10 TO 21, 2024

<b><u>COSTS: PER PERSON, BASED ON DOUBLE OCCUPANCY</u></b>	<b>MAIN PROGRAM</b>
LAND & AIR WITHIN KENYA COST	\$11,995 PER PERSON
SINGLE ROOM SUPPLEMENT	\$2,795 PER PERSON ADDITIONAL

**INTERNATIONAL AIR ARRANGEMENTS:** The cost of your program does not include international airfare. If you require assistance, please contact Classic Escapes at 718-280-5002 and we will happily provide air quotes to you. You may make your own international air arrangements, but please ensure you arrive/depart on the correct dates. Contact your Journey Manager at Classic Escapes to verify the dates to ensure there are no errors. **The start and end city for this program is Nairobi, Kenya.**



## CONDITIONS OF TRAVEL:

---

The purchase of your travel booking constitutes a contractual agreement between the traveler(s), customer(s), and/or purchaser(s) (collectively as "**You**" and "**Traveler**"), and Classic Escapes ("**Classic Escapes**", "**We**", "**Us**") pursuant to the following terms and conditions ("**Terms**", "**Agreement**"):

### **REGISTRATION & PAYMENTS**

**HOW TO BOOK:** Fill out and sign the enclosed reservation form and send it, along with the relevant deposit as shown below, to: CLASSIC ESCAPES, 191 W Poplar Street, Floral Park, NY 11001. Upon receipt of your signed reservation form and deposit, we will, subject to availability, reserve your spot on the tour. You may consider your booking confirmed when you receive a confirmation notice and invoice from us.

**DEPOSIT AND FINAL PAYMENT:** You will be required to pay the following per-person deposits when booking. Those amounts are:

- \$2,400 for the trip.

All deposits are subject to the Cancellation policy herein. Final payment is required no less than 95 days prior to departure (August 7, 2024) unless otherwise stated. Some airfares or services must be paid in full at the time of booking. Deposits may be paid by check, wire transfer or credit card (American Express, Visa, MasterCard, or Discover). Final payment is payable by check, wire transfer, or money order ONLY. Conditioned on receipt of final payment in full, all final documents and air tickets will be sent to you approximately two weeks prior to departure.

**CREDIT CARD TRANSACTIONS:** If for any reason, any travel service provider is unable to provide the services for which you have contracted, your remedy lies against the provider, and not against Classic Escapes, and in the event that payment has been made to Classic Escapes by credit card, you agree that you will not seek to chargeback your payment to Classic Escapes. If the credit card is passed through to the travel service provider and you seek to chargeback your payment from the provider, you agree to be held liable and indemnify Classic Escapes against this chargeback from the provider, including without limitation any air debit memos charged to Classic Escapes. If the credit card is declined, you guarantee that you will settle any amounts owing to Classic Escapes via money order or cash immediately. Except in cases of fraud, you agree not to file any dispute with your bank or credit card company to avoid or violate any booking terms and conditions of Classic Escapes or its suppliers, including cancellations or changes of itinerary or arrangements for reasons beyond the control of Classic Escapes or its suppliers. If you attempt to chargeback, reverse, or recollect a previously authorized trip payment, Classic Escapes reserves the right to collect all additional costs, fees, and expenses associated with such chargeback, reversal or recollection, including, without limitation, attorney fees.

**IMPORTANT CONDITIONS:** Prices are subject to increase prior to the time you make full payment. Prices are not subject to increase after you make full payment, except for charges resulting from increases in government-imposed taxes or fees. By signing the reservation form, you expressly acknowledge your acceptance of these conditions (i.e., increases before full payment and increases attributable to government-imposed taxes or fees after full payment will be your responsibility) applicable to your purchase.

**RATES:** Rates are based on the minimum number of guests outlined in this document, plus airfare costs, currency exchange rates and other factors and are subject to change. Though it is rare for Classic Escapes to make a price adjustment after the promotion of an itinerary, we do reserve the right to assess a surcharge if the minimum is not met, or if increases are forced upon us by airlines or other partners or because of changes in currency exchange rates.

**ADDITIONAL FEES:** Additional taxes and surcharges that cannot be pre-collected may be charged locally. Cost of passport and visa fees and service charges for obtaining visa fees; excess baggage charges levied by airlines; laundry and other items of personal nature; optional travel insurance policy(s); or any other costs incurred that cannot be pre-collected are NOT included and are the sole responsibility of the Traveler.

**SINGLE SUPPLEMENT:** The quoted rate is valid for the first two single rooms booked and on a first-come, first-served basis. If more than two single rooms are needed, an additional supplement may apply. Single accommodations are not guaranteed but will be provided at additional cost if available (see your "Journey at a Glance section" for cost.) The single room supplement pays for privacy, not better accommodation. For passengers who are traveling alone and wish to share a room with another tour member, we will do our best to provide a roommate. However, if this is not possible, you will be required to pay the single room supplement prior to your departure from the USA.

**GRATUITIES, ENTRANCE FEES & TAXES:** Gratuities for baggage handling, service charges and taxes imposed by hotels, and entrance fees to all points of interest as outlined in the itinerary are included in the final cost. U.S. and foreign airport taxes are included in air costs. Tips to drivers and specialist guide(s) are **not** included and are the sole responsibility of the Traveler.

## **CANCELLATIONS, DEVIATIONS & CHANGES**

**TRAVEL INSURANCE:** We recommend travel insurance. Travel insurance can provide financial reimbursement should the unexpected occur.

**CANCELLATION:** Please be aware that most travel bookings are non-refundable and canceled bookings will incur charges. These charges can be up to 100% of the cost of the booking, regardless of whether travel has commenced. Where we incur any liability for a cancellation fee or charge for any booking that you cancel, you agree to indemnify us for the amount of that fee or charge. Cancellations are only effective upon receipt of written notification. The following per-person fees are applicable; however, depending on the specific itinerary or other factors, we may require a non-refundable deposit:

- Up to 6 months prior to departure (May 14, 2024), \$300 per person administrative fee, plus \$1,000 non-refundable deposits given to suppliers.
- 179 days to 96 days prior to departure (May 15, to August 6, 2024), deposit is forfeited.
- 95 days to 76 days prior to departure (August 7 to August 26, 2024), 25% refund is possible.
- 75 days or less prior to departure (August 27, 2024), no refund is possible.

These cancellation fees are also in addition to any fees imposed by airlines.

**REFUNDS:** While Classic Escapes uses its best endeavors to ensure that all anticipated accommodation is available as planned, there is no claim of any nature whatsoever against Classic Escapes for a refund, in whole or in part, if any accommodation or excursion is unavailable and a reasonable alternative is not found, or if the Traveler is unable to use any service provided in the itinerary.

**CHANGES:** Once your tour is reserved, changes to the itinerary are possible subject to the availability of air or land space at the time of your request. Should there be any change fees imposed by any airlines or ground operators, or additional costs incurred due to the availability of any space, these costs will be invoiced to you and you will be responsible for payment thereof.

**SPECIAL ARRANGEMENTS:** Should you wish to make additional travel plans, including specially arranged pre- or post-tour extensions different than those offered in conjunction with your tour, a service charge of \$150 per person (over and above the cost of the services required) will be assessed.

## **DOCUMENTS**

**PASSPORTS:** All individuals departing from the United States of America must be in possession of a valid passport. Please check that your passport is valid for at least 6 months beyond your intended return date. It is your responsibility to ensure that you have valid travel documentation, including but not limited to passports and visas, which meet the requirements of immigration and other government authorities at every destination. You are responsible for confirming with the United States Department of State or the representative government agency of the country to which you are traveling to confirm the requirements for visas and/or other requirements for admission to your destination. Any fines, penalties, payments, or expenditures incurred as a result of such documents not meeting the requirements of those authorities will be your sole responsibility.

**REAL ID:** Beginning October 1, 2021, if you plan to use your state-issued ID or license to fly within the U.S., it is your responsibility to make sure it is REAL ID compliant. If you are not sure if your ID complies, please check with your local state Department of Motor Vehicles, or visit [www.tsa.gov/real-id](http://www.tsa.gov/real-id).

**TRAVEL DOCUMENTS:** It is the responsibility of each Traveler to obtain and carry a valid passport, visa(s), and all other documents required by applicable government regulations. When traveling domestically or internationally, the U.S. Transportation Security Administration (TSA) and U.S. Department of Homeland Security (DHS) advise that everyone carry acceptable identification in order to board a flight. Acceptable identification can be found at <http://www.tsa.gov/traveler-information/acceptable-ids>. The name, date of birth and gender that appears on the identification card must exactly match the same such data that is listed on airline ticket(s) and booking records. You acknowledge any failure to strictly comply with these requirements may result in denied boarding or an undue delay at an airport security checkpoint causing Traveler to miss flight(s), and subsequent scheduled travel bookings on cruises and tours.

Travel documents include, without limitation, airline tickets, hotel vouchers, tour vouchers, or any other document (whether in electronic form or otherwise) used to confirm an arrangement with a service provider. Travel documents may be subject to certain conditions and/or restrictions such as, but not limited to, being non-refundable, non-date-changeable, and subject to cancellation and/or amendment fees. Travel documents cannot be transferred to another person to use. All airline tickets must be issued in the name of the passport/photo identity holder. An incorrect name on a booking may result in an inability to use that booking and the booking being cancelled. Any errors in names, dates, and timings may result in an inability to use that booking and the booking being cancelled. Any errors in names, dates, and timings on your documentation will be your responsibility if we are not advised at the time of booking. Please reconfirm your flights at least 24 hours prior to departure.

**PRE-DEPARTURE INFORMATION:** Upon receipt of your registration and deposit, we will send you an electronic pre-departure packet containing all the information you need to prepare for your tour, including the complete itinerary, packing checklist, required documents, insurance information, etc.

**FINAL DOCUMENTS:** Electronic final documents and air e-tickets will be sent to you approximately two weeks prior to departure, provided all monies have been paid in full.

## **TRANSPORTATION**

**AIR TRANSPORTATION:** Your program does not include international airfare. If you require assistance, contact Classic Escapes.

**FREQUENT FLYER MILEAGE:** Check on the airline's website to enquire who their partners are. Obtain frequent flyer mileage on any of these carriers. Present your frequent flyer card for all flight check-ins and keep the boarding passes until you receive a statement with the mileage credit.

**TRANSFERS:** Roundtrip airport transfers are included in the tour for guests arriving on group flights. If travelers make their own air arrangements, they will be subject to extra transfer fees.

**FLIGHT CONFIRMATION:** We strongly suggest that you reconfirm exact flight times with the carrier prior to departure. Air travelers are required to check in at least 2 hours prior to departure time for domestic flights and 3 hours for international flights and must report to the gate at least 30 minutes prior to departure time. Failure to comply may result in the loss of the seat to another passenger.

**HAZARDOUS MATERIALS:** Federal law prohibits passengers from carrying hazardous materials on the aircraft. Federal law forbids the carriage of hazardous materials aboard aircraft in the passenger's luggage or on the passenger's person. A violation can result in five years' imprisonment and penalties of \$250,000 or more (49 U.S.C. 5124). Hazardous materials include explosives, compressed gases, flammable liquids and solids, oxidizers, poisons, corrosives, and radioactive materials. Examples: Paints, lighter fluid, fireworks, tear gases, oxygen bottles, and radiopharmaceuticals. There are special exceptions for small quantities (up to 70 ounces total) of medicinal and toilet articles carried in the passenger's luggage and certain smoking materials carried on the passenger's person. For further information, each passenger should contact the relevant airline representative(s) on their itinerary. Restrictions on hazardous materials are listed <http://www.tsa.gov/traveler-information/prohibited-items>.

**INSECTICIDE NOTICE:** Some countries require insecticide spraying of aircraft prior to a flight or while you are on the aircraft. We recommend that you refer to the Department of Transportation's list of airports in countries that require airlines to treat the passenger cabin with insecticides prior to the flight or while on the aircraft available at <https://www.dot.gov/office-policy/aviation-policy/aircraft-disinsection-requirements>.

**BAGGAGE & FEES:** Additional fees for baggage may apply. Please contact your airline or refer to its website for detailed information regarding its checked baggage policies. On average, international flights from the USA allow one piece of checked luggage, not exceeding 50 pounds, plus a carry-on piece not exceeding 15 pounds; however, we always recommend that you check your airline's policy just before departure, as luggage limitations are always subject to change. There may also be luggage and weight restrictions for your destination and that information will be forwarded to you with your pre-departure material and also be listed on your final documents.

**LUGGAGE ALLOWANCES ON INTERNAL FLIGHTS:** Your journey includes internal flights aboard light aircraft which are designed with a maximum luggage allowance; this is closely monitored by the flight operators for safety reasons. You are allowed one carry-on and one piece of luggage, total weight: **33 lbs.** (15 kgs.) per person including the camera equipment. Further, soft-sided duffel bags are **preferred**, as they stow best in vehicles and airplanes with limited space. We will buy some extra seats to bring the weight up to 50 lbs. maximum.

**PERSONAL WEIGHT ALLOWANCES ON INTERNAL FLIGHTS:** Your journey includes internal flights aboard light aircraft which are designed with a maximum body weight and luggage allowance; this is closely monitored by the flight operators for safety reasons. If your personal weight exceeds **85 kilos (187 lbs.)** it may be necessary to purchase an extra seat and your Classic Escapes Journey Manager will contact you should this be necessary.

**AIRLINE CLAUSE:** The airlines concerned are not to be held liable for any act, omission or event during the time the passengers are not on board their planes or conveyance. The passengers' tickets in use by the airline or by other carriers concerned when issued shall constitute the sole contract between the airlines and the purchaser of these tickets and/or passengers.

**DELAYS:** We cannot be held liable for any delays or additional costs incurred as a result of airlines not running to schedule. Any additional land or air fees imposed on account of airline delays will be borne by the traveler.

### **TRIP DETAILS**

**ACCOMMODATIONS:** You will marvel at the wonderful accommodations provided throughout your tour. All rooms have private bathroom facilities and air conditioning and/or fans, unless otherwise specified. All rates are based on double occupancy. Most rooms are twin-bedded, but king-size beds are occasionally available and should be requested in advance. Accommodations listed in this itinerary are correct at time of writing, but on rare occasions may be substituted for a different property of comparable quality.

**MEALS:** All meals as specified in the itinerary. Please notify us if you have special dietary needs or requests, and we will do our best to accommodate.

**WATER:** It is always advisable to drink bottled and/or filtered water when traveling overseas. Safe drinking water will be provided to travelers free of charge in the vehicles and during meals.

**PHOTOGRAPHY:** The Company reserves the right without further notice to make use of any photograph or video taken on the tour by our photographers without payment or permission. We guarantee that no photographs of a compromising nature will be used.

**GUIDES:** If one of Classic Escapes' guides are unable to take a trip due to circumstances out of our control (i.e., illness, etc.), we reserve the right to substitute with another guide.

**TOUR ITINERARY:** To the best of our knowledge the itinerary is correct at the time of printing. We cannot be held responsible for any inaccuracies or changes that may occur after printing.

**HEALTH AND SPECIAL REQUIREMENTS:** You must have the proper immunizations and health screenings and required documentation of such immunizations and screenings before travel. It is your responsibility to ensure you are aware of any health requirements, health advisories, or health travel restrictions applicable to your travel destinations and to ensure that you carry all necessary vaccination documentation. Classic Escapes is not responsible for providing you with this information. Travel carriers and local authorities at travel destinations may require specific testing prior to boarding and/or upon arrival at your destination, including, but not limited to, a temperature check as a result of the COVID-19 pandemic. You may be denied entry onto your carrier and/or entry upon arrival at your destination or be required to self-quarantine at your destination and upon your return to the United States. You must comply with local government regulations. Any additional costs are your responsibility. Check the State Department Web site <http://travel.state.gov>, for relevant information relating to travel to specific destinations, and the Center for Disease Control <http://wwwnc.cdc.gov/travel/> relating to health issues related to travel.

You must be in good physical and mental health. It shall be your duty to inform us in case you have any medical condition that may affect your ability to enjoy and pursue fully the services of Classic Escapes. By registering for a Classic Escapes service/program, you certify that you do not have any mental, physical, or other condition or disability that would create a hazard for yourself or others.

### **COVID-19 ACKNOWLEDGEMENT**

In order to participate in one of our tours, travelers must certify that they have not recently been treated for, nor are aware of any physical or other condition or liability that would create a hazard to themselves or other members of the tour and agree to comply with all health protocols as directed by Classic Escapes and their representatives during their journey. Travelers must maintain suitable physical distancing and frequently wash or sanitize hands throughout their journey. Travelers are required to follow guidelines established by local regulations which may include wearing masks in vehicles, indoor areas, and any outdoor areas where physical distancing is not possible. Explicit instructions will be provided by our guide on arrival. Noncompliance with these procedures will result in the suspension of the journey. **Travelers voluntarily assume all risks and related expenses in the event that they or any member of their traveling party require testing, quarantine, or become infected with COVID-19.** Classic Escapes will endeavor to provide assistance wherever possible.

**TRAVEL INSURANCE:** For your protection, we strongly recommend that you purchase trip cancellation and travel accident insurance. However, no representation or description of the insurance made by Classic Escapes to you constitutes a binding assurance or promise about the insurance. Classic Escapes is not an insurance company and has no responsibility for the submission, payment, or adjustment of any insurance claims. Any insurance claims that may fall under the relevant travel insurance policy must be submitted to the insurance company identified in the policy. We recommend the following service – please visit the website to enroll: <http://www.travelguard.com/classicescapes/>. Any questions about what travel insurance does or does not cover should be addressed directly to the travel insurance company, Travel Guard at 1-866-385-4839 and reference ARC #71298. If you decline insurance coverage, you will personally assume full responsibility for any financial loss associated with your travel arrangements, and you could lose your travel investment and/or have to pay more money to correct the situation. **THE PURCHASE OF TRAVEL INSURANCE IS HIGHLY RECOMMENDED ON ALL TRIPS.**

**EMERGENCY EVACUATION COVERAGE:** For the convenience of our travelers, Classic Escapes provides a complimentary Medical Insurance Plan during your trip via Travel Guard Group, Inc. This includes:

- Emergency evacuation insurance up to \$100,000.
- Up to \$25,000 medical expense and up to \$500 dental expense coverage subject to the terms and limitations of the insurance policy.
- 24-hour worldwide travel and medical assistance.

Medical Plan (926801)

Please click here to view complete coverage of details.

[https://webservices.travelguard.com/Product/FileRetrieval.aspx?CountryCode=US&StateCode=AL&ProductCode=926801&PlanCode=NW&FileType=PROD\\_PLAN\\_GM](https://webservices.travelguard.com/Product/FileRetrieval.aspx?CountryCode=US&StateCode=AL&ProductCode=926801&PlanCode=NW&FileType=PROD_PLAN_GM)

## **TERMS & CONDITIONS**

**TOUR OPERATOR:** Classic Escapes acts as a tour operator/travel agent only. Classic Escapes does not own, operate, manage, or control any independent suppliers of services and is not liable for their acts or omissions. Classic Escapes' obligations to you are to make travel bookings on your behalf and to arrange relevant contracts between you and other travel service providers. We have no responsibility for these services, nor do we have the authority to make any warranty or representation regarding their standard. Requests cannot be guaranteed. All bookings are subject to the terms and conditions and limitations of liability imposed by these travel service providers. You understand that your legal recourse is against the specific provider, not Classic Escapes. Conditions can change rapidly in a country at any time. It is your responsibility to check the USA Government Travel advisories for your intended destination at <https://travel.state.gov/content/travel.html>.

**RESPONSIBILITY OF THE COMPANY:** We always do our best to make sure your travel arrangements are satisfactory. However, Classic Escapes and its employees, shareholders, subsidiaries, affiliates, officers, directors, successors, agents, and assigns do not own or operate any third-party entity that provides goods and services for your travel, including without limitation lodging facilities, airline, vessel, motorcoach, or other transportation companies, local ground operators, providers, food service providers, etc. All such persons and entities are independent contractors and are in no way affiliated to Classic Escapes. We are not liable for any delays or additional costs incurred by the Traveler as a result of any actions or occurrences by any of the foregoing third party entities.

**LIABILITY:** Classic Escapes is not liable for any negligent or willful act or failure to act of any travel service provider or of any third party. Because Classic Escapes does not have the right to control the operations of such travel service provider or any third party, you agree that Classic Escapes is not liable for any personal injury or property damage which may arise out of these services. Classic Escapes hereby disclaims any liability whether based on contract, tort, strict liability or otherwise, including without limitation liability for any direct, punitive, special consequential, incidental or indirect damages, in connection with the goods or services provided by any supplier booking through Classic Escapes, including without limitation liability for any act, error, omission, injury, loss, accident, delay or irregularity which may be incurred through the fault, negligence, willful acts, omissions or otherwise of such travel service provider or any third party, or their respective employees, agents, servants, or representatives, including, without limitation, their failure to deliver or their partial or inadequate delivery of services, their cancellation and refund policies, fuel increases, bankruptcy or cessation of operations and other matters outside of Classic Escapes' control, and you hereby exonerate Classic Escapes from any liability with respect to the same.

**FORCE MAJEURE:** Classic Escapes will not be in breach of these terms and conditions or otherwise be liable to you, for any failure or delay in performing an obligation under this Agreement that is due to any of the following causes, to the extent beyond its reasonable control: acts of God, accident, riots, war, terrorist act, illness, disease, epidemic, pandemic, quarantine, civil commotion, breakdown of communication facilities, including web host and internet service provider, breakdown or malfunction of equipment, destruction of or serious damage to facilities, natural catastrophes including, but not limited to extreme weather events, floods and volcanic eruptions, governmental acts or omissions, changes in laws or regulations, national strikes, fire, explosion, generalized lack of availability of raw materials or energy, and any other unforeseen circumstance which is beyond the control of Classic Escapes. THE PURCHASE OF TRAVEL INSURANCE IS HIGHLY RECOMMENDED ON ALL TRIPS.

**REFUSAL OF SERVICE:** Service providers reserve the right to refuse service to travelers at their sole discretion, including, without limitation, if the traveler: (i) lacks proper documentation for the country of destination; (ii) has a contagious disease; (iii) is under the influence of alcohol, drugs, or narcotics; and/or (iv) manifests disruptive and/or unruly behavior. Classic Escapes assumes no liability for the acts of the service provider in refusing service.

**ELECTRONIC OR HANDWRITTEN SIGNATURE:** Both parties agree that you may acknowledge and agree to these Terms: (i) electronically; (ii) by handwritten signature; (iii) by any other electronic means, including, without limitation, via email acceptance of these Terms; or (iv) by your implied consent deemed via your actions, which shall include without limitation the payment of the invoice in part or in full or your use of the services provided by Classic Escapes or any other travel supplier related to your booking.

Schedules, accommodations and prices are accurate at the time of writing. They are subject to change.



All such means will be deemed to constitute effective acknowledgement and execution of this Agreement and shall be sufficient to bind the parties to the terms and conditions of this Agreement.

**RESERVATION OF RIGHTS:** We reserve the right, in our sole discretion, to change these Terms and Conditions at any time. Updated versions of the Terms will be provided to you, will be posted on our website, and are effective immediately on posting.

**GOVERNING LAW:** The construction, validity, and performance of these Terms and any disputes between the parties shall be governed by and construed according to the laws of the State of New York, without giving effect to its conflict of law principles, and any federal laws applicable therein. Both parties submit to the exclusive jurisdiction of the courts of the State of New York with respect to any legal proceedings relating to these Terms.



Enclosed is my deposit for \$ \_\_\_\_\_ (\$2,400 per person for trip) to hold \_\_\_\_\_ place(s) on the Wildlife Safari to Kenya departing on November 10, 2024. Check Your Journey at a Glance for all costs associated to this tour.

**Final payment due date is August 7, 2024**

Please make check payable to CLASSIC ESCAPES and mail to 191 W Poplar Street, Floral Park, NY 11001 **OR**

Charge deposit to: ☐ MasterCard ☐ Visa ☐ American Express ☐ Discover

(Credit Card Authorization form needs to be completed and returned to Classic Escapes via mail or fax to 718-204-4726)

Deposits can be made by credit card; however, all final payments are required to be made by check, wire transfer, or money order **only**.

1) NAME (As appears on passport): ☐ Mr. ☐ Mrs. ☐ Ms. \_\_\_\_\_ Date of Birth (M/D/Y) \_\_\_\_/\_\_\_\_/\_\_\_\_

Passport No. \_\_\_\_\_ Green Card No. \_\_\_\_\_ Expiration Date \_\_\_\_\_ Nationality \_\_\_\_\_

2) NAME (As appears on passport): ☐ Mr. ☐ Mrs. ☐ Ms. \_\_\_\_\_ Date of Birth (M/D/Y) \_\_\_\_/\_\_\_\_/\_\_\_\_

Passport No. \_\_\_\_\_ Green Card No. \_\_\_\_\_ Expiration Date \_\_\_\_\_ Nationality \_\_\_\_\_

STREET ADDRESS: \_\_\_\_\_

CITY: \_\_\_\_\_ STATE: \_\_\_\_\_ ZIP: \_\_\_\_\_

PHONES: HOME: (     ) \_\_\_\_\_ OFFICE: (     ) \_\_\_\_\_ MOBILE: (     ) \_\_\_\_\_

E-MAIL ADDRESS: \_\_\_\_\_ FAX: (     ) \_\_\_\_\_

**A copy of your passport must accompany this form to confirm a reservation. Upon receipt of your signed reservation form, passport copy and deposit we will, subject to availability, reserve your spot on the tour. The passport must be valid for at least 6 months after the return of your trip and have six consecutive blank pages in the visa section.**

- ☐ I certify that I have not recently been treated for, nor am I aware of any physical or other condition or liability that would create a hazard to myself or the other members of this tour.
- ☐ The two of us above are sharing a room and, where possible, would like a room with: ☐ ONE ☐ TWO Beds (Make one selection only)
- ☐ I am sharing with \_\_\_\_\_ (form sent separately)
- ☐ I need assistance in securing a roommate. I understand if the tour operator cannot locate one for me by final the payment date, I agree to pay the additional single. I prefer to share with: ☐ Smoker ☐ Non-smoker.
- ☐ I desire single accommodations, if available, and will pay the single supplement additional cost
- ☐ \$500 per person for the Massai Mara Balloon Safari (as of January 16, 2024) and subject to change)

**CLASSIC ESCAPES CAN ASSIST WITH INTERNATIONAL FLIGHT ARRANGEMENTS FROM ANY US CITY.**

- ☐ YES, I WILL REQUIRE ASSISTANCE. PLEASE SEND ME INFORMATION TO DEPART FROM \_\_\_\_\_  
I REQUIRE: ☐ ECONOMY ☐ BUSINESS/FIRST CLASS

*We'd love to send you exclusive offers and the latest news from our partners around the world. We'll always treat your personal details with the utmost care and will never sell them to other companies for marketing purposes.* ☐ **No thanks, I don't want to hear about offers and news.**

All rates quoted are based on tariffs and value of foreign currencies in relation to the U.S. dollar in effect as of January 16, 2024 are subject to change. Cancellation penalties applicable as outlined in the Conditions of Travel. **WE STRONGLY RECOMMEND THAT YOU OBTAIN TRAVEL INSURANCE. RESERVATIONS ARE ACCEPTED SUBJECT TO TOUR CONDITIONS AND WILL BE CONFIRMED ONLY IF ACCOMPANIED BY A COMPLETED FORM SIGNED BY THE TOUR PARTICIPANT(S).**

SIGNATURE: \_\_\_\_\_ DATE: \_\_\_\_\_

SIGNATURE: \_\_\_\_\_ DATE: \_\_\_\_\_

CLASSIC ESCAPES INC.  
191 W Poplar Street, Floral Park, NY 11001  
Tel: 800-627-1244 Or 718-280-5000  
Fax: 718-204-4726

Email: [info@classicescapes.com](mailto:info@classicescapes.com)

(We recommend that you keep a copy of your selections as noted above for your future reference)

MIKE & EILEEN CROWTHER ~ KENYA  
NOVEMBER 10 TO 21, 2024



191 W Poplar Street, Floral Park, NY 11001  
T: (718) 280-5000; (800) 627-1244  
F: (718) 204-4726  
E: info@classicescapes.com

CREDIT CARD PAYMENT AUTHORIZATION

*Please Note: If you wish to charge your deposit to Visa, MasterCard, American Express or Discover, this authorization form MUST be completed and returned to us along with your reservation form before we can process your application.*

I authorize (Classic Escapes Inc.) to charge my VISA/MASTERCARD/DISCOVER/AMEX listed below:

Name appearing on credit card. \_\_\_\_\_

Card number \_\_\_\_\_ Expiration date \_\_\_\_\_

Card Verification Number\* \_\_\_\_\_ Card Type \_\_\_\_\_

Billing address of credit card \_\_\_\_\_  
\_\_\_\_\_

Amount of transaction \_\_\_\_\_

Services rendered/Items purchased. \_\_\_\_\_  
\_\_\_\_\_

Phone number \_\_\_\_\_

Signature \_\_\_\_\_ Date \_\_\_\_\_

**\*How To Locate Your Card Verification Number:**

(Visa, MasterCard, Discover: Locate the credit card number on the back of the card above the signature box. Enter the 3-digit number which follows the credit card number. **American Express:** Enter the 4-digit number found directly above and to the right of the credit card number.)

I understand that all rates quoted on this tour I'm making a payment on are based on tariffs and value of foreign currencies in relation to the U.S. dollar in effect as January 16, 2024 and are subject to change Cancellations are only effective on receipt of written notification. The per person cancellation penalties are repeated below.

- Up to 6 months prior to departure (May 14, 2024), \$300 per person administrative fee, plus \$1,000 non-refundable deposits given to suppliers.
- 179 days to 96 days prior to departure (May 15, to August 6, 2024), deposit is forfeited.
- 95 days to 76 days prior to departure (August 7 to August 26, 2024), 25% refund is possible.
- 75 days or less prior to departure (August 27, 2024), no refund is possible.

These cancellation fees are also in addition to any fees imposed by airlines.

PLEASE NOTE: At times, our bank requires photocopy of credit card (both sides) and driver's license or document showing signature of cardholder, in order to process the charge. While it is not required at this time that you include these materials with your deposit, if our bank requests it, we will contact you for these copies.