

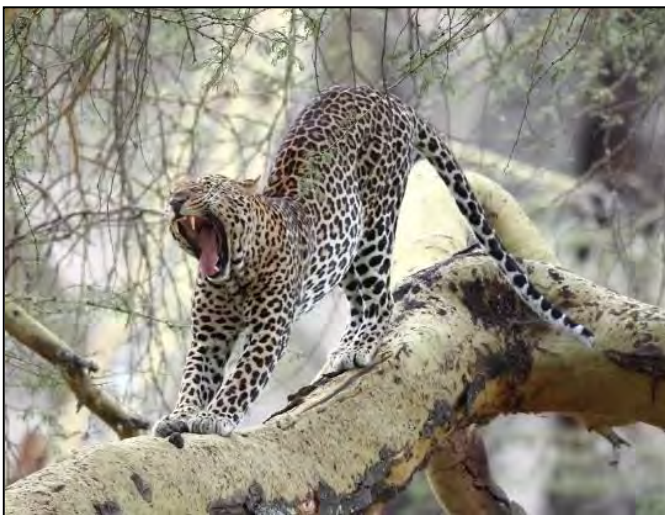
THE JACKSONVILLE ZOO

CORDIALLY INVITES YOU ON A CLASSIC SAFARI TO

KENYA

SAFARI MYSTIQUE UNDER AFRICAN SKIES

OCTOBER 20 TO NOVEMBER 3, 2024



191 W Poplar Street, Floral Park, NY 11001
T: (718) 280-5000; (800) 627-1244
F: (718) 204-4726
E: info@classicescapes.com
W: www.classicescapes.com

For more information, find us on:
[facebook.com/Classic.Escapes.inc](https://www.facebook.com/Classic.Escapes.inc)
twitter.com/classicescapes
[instagram.com/classic_escapes](https://www.instagram.com/classic_escapes)

YOUR ZOO HOST~ TONY VECCHIO, RETIRED ZOO DIRECTOR OF JACKSONVILLE ZOO & GARDENS

Tony Vecchio was Executive Director at Jacksonville Zoo and Gardens from July 2009 to May 2022. Under Vecchio's leadership, the Zoo's attendance grew from 668,800 in FY2009-10 to over 1,000,000 in FY2015-16. The zoo broke attendance records six times in his last seven years and garnered awards for Conservation, Diversity, and Exhibits.

Vecchio's zoo career spans a 39-year period. It began at Highland Park Zoo (now called Pittsburgh Zoo) in Pittsburgh, Pennsylvania, and continued with Riverbanks Zoo in Columbia, South Carolina, Zoo Atlanta in Atlanta, Georgia, Roger Williams Park Zoo in Providence, Rhode Island, and Oregon Zoo in Portland, Oregon. As Executive Director of the Oregon Zoo, the Zoo achieved record attendance in seven of the 11 years he was there.

Vecchio has a Master of Science, Biology, from the University of South Carolina and a Bachelor of Science, Environmental Resource Management/Wildlife Conservation from Penn State University. His honors and awards include the Vanguard Award, Rhode Island Veterinary Medical Association; Outstanding Citizen Award, Mayor of Providence, Rhode Island; and the Outstanding Service Award, Association of Zoos and Aquariums (AZA).

Vecchio was on the Executive Board of Visit Jacksonville. He has served on the AZA's Board of Directors, Board of Regents, Animal Welfare Special Committee, Pig and Peccary Advisory Group, and Science and Technology Committee of the AZA and is considered a leader in the organization. He has also been a member of the American Association of Zookeepers; Animal Behavior Society; American Society of Primatologists; International Bear Biology Association; Society for Conservation Biology; American Society of Mammalogists, American Federation of Herpetoculturists, Florida Association of Zoos & Aquariums Conservation Committee, and the South East Zoo Alliance for Reproduction and Conservation.



YOUR NATURALIST GUIDE: ALBERT MITCHO KARISA

Albert Mitcho Karisa is one of the best and most experienced guides currently leading tours in East Africa. Always ready to pass on his knowledge in combination with a vibrant sense of humor, travelers comment that "Albert makes learning about the animals, environment, and culture an especially fun experience." A native of Rwanda, he has led trips to Uganda, Tanzania, Zimbabwe, Congo, Morocco, and France. His birding abilities are unequaled and his expertise in photography will help you get that perfect picture. His unbounded energy stems from his long-distance running, and his interests include herbal medicine and the cultures of Africa. Albert's passionate nature and buoyant personality make him the perfect ambassador for Africa.



YOUR ITINERARY

DAY 1~ SUNDAY~ OCTOBER 20

USA/EN ROUTE

Your journey begins as you board your flights en route to Nairobi.

DAY 2~ MONDAY~ OCTOBER 21

NAIROBI

Upon arrival, you are welcomed by your Classic Escapes expert driver/guide and naturalist and escorted to your luxurious hotel. The remainder of your evening is at leisure.



Located within a pleasant forested area overlooking the second hole of a golf course, The Residences at Karen embody comfort, luxury, and serenity, perfect for any getaway. The Residences at Karen is truly your home away from home offering all the luxuries of a five-star hotel, with special personalized service, a relaxed atmosphere, and great attention to detail. A team of professional staff is eager to serve you and anticipate your every need. The Residences host six cottages and twelve apartment suites. The stunning cottages have two spacious bedrooms each with a separate outside entrance and a luxuriously furnished living room with a beautiful stone fireplace, service area, dining area, and furnished terrace. All rooms are equipped with modern amenities.

Overnight at THE RESIDENCES AT KAREN in cottage rooms. (D) www.theresidences.or.ke

DAY 3~TUESDAY~ OCTOBER 22

NAIROBI

Your day begins with a game drive in Nairobi National Park, unique in that the Park is the only protected area in the world with a variety of animals and birds close to a capital city. As expected, the park is a principal attraction for visitors to Nairobi. The park also serves many residents and citizens living in the city as it has a diversity of environments with characteristic fauna and flora. Open grass plains with scattered acacia bush are predominant. The western side has a highland dry forest and a permanent river with a riverine forest in the south. In addition, there are stretches of broken bush country and deep, rocky valleys and gorges with scrub and long grass. Man-made dams have also added a further habitat favorable to certain species of birds and other aquatic life forms. The dams also attract water dependent herbivores during the dry season.



The park has a rich/diverse birdlife with 400 species recorded; however, all species are not always present and some are seasonal. Northern migrants pass through the park primarily during late March through April. Nairobi National Park is one of the most successful of Kenya's rhino sanctuaries. It is already generating a stock for reintroduction in the species' former range and other upcoming sanctuaries. Due to this success, it is one of the few parks where a visitor can be certain of seeing a black rhino in its natural habitat.

Continue to The Sheldrick Wildlife Trust at the edge of Nairobi National Park, which is a nursery and rehab center for infant elephants that have lost their families, as well as rhinos and occasionally zebras and other wildlife. Daphne Sheldrick was the first person to successfully master the art of raising orphaned infant elephants. The wife of the famous naturalist David Sheldrick, Daphne had dedicated her life to conservation. David was the founding Warden of Kenya's giant Tsavo East National Park, in which he served from 1948 until his death in 1976. Daphne continued her involvement till her death in April 2018 and had a real impact on the lives of elephants and rhinos, which would have normally died due to human poaching and surrounding population conflict. Their daughter, Angela, now continues this most important work. You'll enjoy a visit with the elephants as they're brought by their keepers to the waterhole and salt lick to be fed and socialize – see how they roll in the mud and play fight and their affectionate interaction with their keepers. Learn the habits of the orphans and many interesting facts about their upkeep. These infants are eventually released into the wild at Tsavo East National Park and end up in the care of other orphans who have been successfully reintroduced to the wild.



Your next stop is at the Kobe Tough Bead Factory. All of the beads and pottery in the shop are designed and created by mothers who would not otherwise have employment. The quality and beauty of designs have made the factory a favorite of locals and visitors alike.



Enjoy lunch at Karen Blixen Coffee Garden and resume your sightseeing at the African Fund for Endangered Wildlife (AFEW Kenya) Giraffe Centre near Giraffe Manor where you may hand-feed the Rothschild giraffes that live here. The giraffes were brought here by Jock and Betty Leslie-Melville, who founded AFEW and built the Giraffe Centre to help educate young African children about wildlife conservation. The Rothschild giraffe is the tallest species and may reach 18 feet in height, but you can see eye to eye with them on the elevated walkway at the center.

Visit the Karen Blixen Museum, the former home of the Danish Baroness, Karen Blixen (1885-1962) author of the book *Out of Africa*. Karen lived in this green residential area from 1914 to 1931 when she left permanently for Denmark. The house was built in 1910 and when Ms. Blixen bought the property, it had 6,000 acres of land but only 600 acres were developed for growing coffee; the rest was retained under natural forest. The house was bought by the Danish Government, which offered it back to Kenya in 1963. In 1986, the house, formerly used as a school, was transformed into a National Museum. Much of the original furniture is on



display in the house and most objects were either used by Karen herself or for the shooting of the film, "Out of Africa."



Your welcome dinner has been prepared for you at the Carnivore Restaurant. Carnivore's specialty is meat and features an all-you-can-eat meat buffet. Every type of meat imaginable is roasted on traditional Maasai swords (skewers) over a huge, visually spectacular charcoal pit that dominates the entrance of the restaurant. There are vegetarian dinner choices as well. Overnight at THE RESIDENCES AT KAREN in cottage rooms. (B,L,D)

DAYS 4/5~ WEDNESDAY/THURSDAY~ OCTOBER 23/24

AMBOSELI NATIONAL PARK/ MOUNT KILIMANJARO

Begin your exploration of this magnificent country with its diverse landscapes and hospitable people, and drive to Amboseli National Park located at the foot of Africa's highest mountain, Mount Kilimanjaro. The snow-capped peak of Mount Kilimanjaro rises above a saucer of clouds and dominates every aspect of Amboseli. This park covers only 150 square miles but despite its small size and its fragile ecosystem, it supports a wide range of mammals (well over 50 of the larger species) and birds (over 400 species). Years ago this was the locale around which such famous writers as Ernest Hemingway and Robert Ruark spun their stories of big-game hunting in the wilds of Africa. This too is part of Maasailand, and it's not unusual to see the proud Maasai warrior or small children tending their cattle as you traverse their territory. In this land, animals and man have learned to coexist and thrive together, despite the harsh conditions. This is also the park that has been made famous by Cynthia Moss, the noted American naturalist, and author who has one of the longest-running studies on elephants. You might even see some of the elephants that Cynthia has immortalized in her many books and award-winning film *Echo of the Elephants*.



In the shadow of Mount Kilimanjaro, beside a copse of giant acacia trees and a gently flowing natural spring, stands Amboseli Serena Safari Lodge. With Kilimanjaro's 19,340-foot snow-capped summit presiding over the landscape, the setting is unrivaled. All around the lodge roams the wildlife that has made East Africa legendary – lion, buffalo, cheetah, giraffe, baboon, gazelle, and wildebeest. Influenced by native Maasai architecture, the lodge is in perfect harmony with its environment. Beautifully landscaped gardens, unique guest services, and exceptional amenities enhance the distinctive ambiance. The uniquely constructed ivory class guest rooms – 96 in total – with en-suite bathrooms, individually appointed with authentic Africana and murals painted by a renowned local artist, convey a distinctive Maasai Manyatta mood.



Grouped in the manner of a Maasai village, each room enjoys a view of either majestic Mount Kilimanjaro or the expansive Amboseli plains, which are home to herds of elephants that feed on the large, feathery acacia trees. Overlooking the saltlick and floodlit waterhole, the open-air dining room serves guests sumptuous international menus, buffets, and barbecues alongside authentic African dishes. A full-service bar and a refreshing outdoor pool are some of the other luxuries one is expected to find at this lodge.

Overnights at the AMBOSELI SERENA SAFARI LODGE. (B,L,D Daily) www.serenahotels.com/kenya/amboseli/home.asp

Approximate driving time from Nairobi to Amboseli: 3 ½ hours.

DAY 6~FRIDAY ~ OCTOBER 25

AMBOSELI NATIONAL PARK/NAIROBI/THE ARK

Continue your safari adventure as you fly to Nairobi and continue with your drive towards the Equator and the Aberdares Country Club nestling on the slopes of the Kamatongu Hill offering splendid views of the plains below with the Aberdare range of mountains to the West and Mt. Kenya to the East. Originally the private residence of a wealthy English family, the house was called “Steep,” and is situated on 1,300 acres of now electrically-fenced private land. To be found in this beautiful sanctuary are eland, waterbuck, giraffe, zebra, impala, ostrich, bushpig, and leopards. Warthogs are usually on the grounds, munching on the succulent grass, oblivious to your presence as you’re having your lunch.



After lunch, your drive takes you through the forest to your accommodation for the evening at The Ark. Be on the lookout as oftentimes buffalo and elephants, as well as colorful forest birds and other wildlife can be seen in the forest as you drive by. The Ark overlooks the Yasabara waterhole, perhaps the largest salt-lick in the Aberdare Mountains, and is uniquely shaped to resemble the actual Ark, designed with decks from which numerous balconies and lounges provide superb vantage points for viewing the animals visiting the salt-lick and waterhole, at all times of the day and night. A ground-level bunker provides excellent photographic opportunities, and the Yasabara waterhole is floodlit by night to enable all-night viewing of wildlife.

A resident naturalist is always on hand to point out the diverse wildlife and interesting landscape. As you relax this afternoon and evening, you may spot wildlife such as elephant, rhino, buffalo, bushbuck, giant forest hog, sykes monkey, leopard, and bongo.

Overnight at THE ARK. (B,L,D) www.thearkkenya.com

Approximate driving time from Nairobi to the Ark: 3 ½ -4 hours.



DAYS 7/8~ SATURDAY/SUNDAY~ OCTOBER 26/27

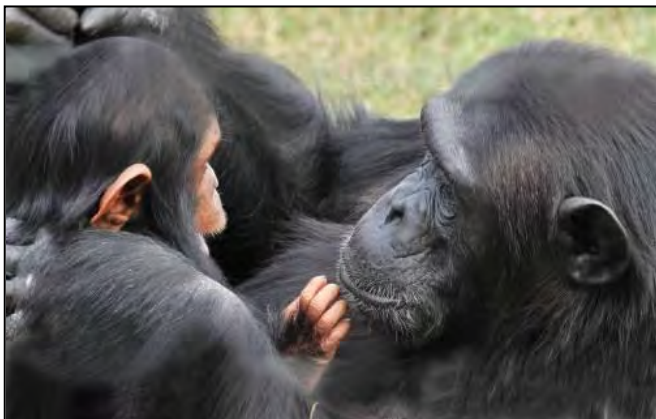
OL PEJETA~SWEETWATERS TENTED CAMP

Another adventure begins when you drive today to the heart of a privately-owned 90,000-acre reserve, where your luxurious tented camp with magnificent views of Mt. Kenya awaits you. One of only four private wildlife reserves in Kenya, your under-canvas experience includes day wildlife drives in search of the 'Big Five'. Watch a parade of elephants, giraffes, zebras, and impalas come to drink at the camp's floodlit waterhole and saltlick.

While here go on a night drive in search of nocturnal species, and on a guided bush bird walk. Meet Najin and Fatu, the last northern white rhinos left in the world, moved to Kenya from the Czech Republic in 2009. They now live in the 700-acre northern white rhino enclosure.



During your stay here, you will also visit the 200-acre chimpanzee sanctuary that has been set up here. Although chimps are not indigenous to Kenya, the aim of the project, initiated by Kenya Wildlife Services and the Jane Goodall Institute, was to set up a colony where chimps could be introduced, rehabilitated, and taught to fend for themselves in an area similar to their natural living conditions. Priority is given to orphaned and abused chimps. The sanctuary currently has over 40 chimps, including two babies born in the sanctuary. There is also the visitor's information center at Morani's Boma.



Accommodation is provided in luxuriously appointed tents set under thatched roofs, with en suite facilities and private verandahs. All tents face the waterhole, and often the best time to be had is just sitting on your private porch watching the procession of animals that are attracted to the waterhole and observing their behavior.

Overnights at SWEETWATERS TENTED CAMP in standard tents. (B,L,D Daily) <https://www.serenahotels.com/sweetwaters>
Approximate driving time from the Ark to Sweetwaters Tented Camp: 3 hours.

DAY 9~MONDAY~ OCTOBER 28

SWEETWATERS/LAKE NAKURU NATIONAL PARK/LAKE ELMENTEITA

Travel overland for a fabulous day of nature viewing. You are now in the heart of the Great Rift Valley (which roughly bisects Kenya North to South, a huge geological fault-line that stretches around one-sixth of the Earth's circumference and is visible from far out in space. At 2,000 feet deep and 30 miles wide, it runs as far as the eye can see. Its walls are sheer and high and, along its length, there are many volcanoes mostly dormant. The landscape, with bubbling springs and geysers, is spectacular.

Arrive at Lake Nakuru National Park, a shallow alkaline body of water, once world-renowned for the huge concentration of flamingos. Today, there aren't many flamingoes left, but the park boasts a huge variety of animals including leopards – often found snoozing on the branches of magnificent yellow-barked acacias – lion, buffalo, hippo, waterbuck, warthog, baboon, and the endangered Rothschild's giraffe (Only found in this part of Kenya), white rhino and the rare, protected black rhino. For the bird-watching enthusiast, there are 450 species found in the park vicinity, with a big concentration of water birds including Marabou Stork and pelican.

Your home for the next two nights, Lake Elmenteita Serena Camp, offers luxurious accommodations nestled in the amazing Rift Valley scenery. Uniquely situated on the shoreline of sapphire-blue Lake Elmenteita where hundreds of thousands of birds congregate, the small and exclusive Lake Elmenteita Serena Camp is brand new – opened in June 2011. Evocatively styled to echo the area's rich history, the camp blends aristocratic elegance with modern luxury and offers cuisine and service of fittingly high standards.



The nomadic Maasai had passed through the area for centuries and the name Elmenteita derives from the Maasai Ol muiteita for “place of dust”. Then in 1897 one of the first pioneers arrived, after walking over 621 miles south of Berbera on the coast of Somalia. This was the third Baron Delamere, who dedicated his foresight and fortune to pioneering farming methods in the Rift Valley. He moved to Elmenteita in 1906, where he further experimented with sheep and cattle ranching, advised and assisted by the Maasai – with whom he had a great rapport. He named his farm Soysambu, Maasai for “striated rock” - Sambu is also a cow color.



Today's Soysambu is a 48,000-acre Wildlife Conservancy, also a RAMSAR site – a wetland of international importance. The alkaline lake's rocky islands are the only East African nesting site for Great White Pelicans, while its algae and plankton provide food for vast flocks of flamingos and a multitude of other waterfowl, many of them rare. The Conservancy protects over 450 bird species and 15,000 wild animals. Rothschild giraffes have found a safe haven for breeding here, while a diverse variety of terrain shelters many species – from herds of giant elands to tiny dik-diks and cliff-dwelling klipspringers. Night game-drives offer a unique opportunity to spot nocturnal creatures including the curious drives offer a unique opportunity to spot nocturnal creatures including the curious-looking armadillo and elusive leopard. Walking is also allowed, with chances to experience the miracles of the bush close-up. Bush dinners beneath the stars, spectacular sundowners and hot-air ballooning over this geologically fascinating part of the Great Rift Valley are a few more of the camp's exciting activities. Lake Nakuru National Park and Kariandusi prehistoric sites are nearby.

Overnight at the ELMENTEITA SERENA. (B,L,D)
<https://www.serenahotels.com/elmenteita>

DAY 10~TUESDAY~OCTOBER 29 **HELLS GATE/LAKE NAIVASHA BOAT RIDE & CRESENT ISLAND**

This morning, take a drive at Hell's Gate, one of the spots that were the inspiration of *Lion King*, so named because of this gorge's interesting geological formation. Famous for its natural hot geysers, the area is also a haven for ornithologists with its eagle and vulture breeding grounds. You may spot Verreaux's Eagle, Augur Buzzard, and thousands of swifts; 103 species of birds have been recorded in the park. The game won't let you down either: buffalo, Maasai giraffe, eland, hartebeest, lion, leopard, and some cheetah are in the area, although not easily viewed.



You will also be treated to a boat ride on Lake Naivasha, where hippos and waterbirds abound, en route to Crescent Island, which you can explore on foot. No predators are found on this island, so walking among the free-roaming antelope is sure to be a fun experience. This island, shaped like a quarter moon, is a sanctuary for herds of antelope and many species of birds. Over 350 bird species have been recorded, with Thomson's gazelle, waterbuck, monkeys, and other wildlife to keep them company.



Your afternoon is at leisure in your beautiful camp to enjoy the facilities, take a walk at the lake shore, or simply relax and rejuvenate.

Overnight at the ELMENTEITA SERENA. (B,L,D)

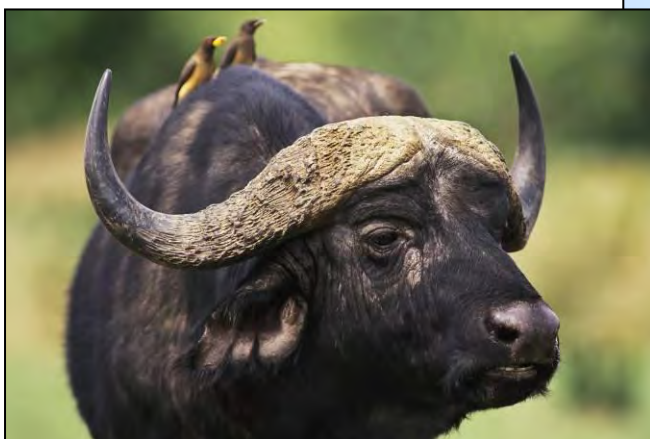
DAYS 11/12/13~ WEDNESDAY/THURSDAY/FRIDAY~ OCTOBER 30/31~ NOVEMBER 1

MAASAI MARA/ NORTHERN SERENGETI

Your drive now takes you to the Maasai Mara, Kenya's most famous wildlife reserve, much the setting for the film *Out of Africa*. It is classic savannah - grasslands, where animals are plentiful and the vistas spectacular. In this dreamlike land, animals live in freedom, and the Maasai care for their herds, all sharing the same land with minimal conflict. You will have three days of wildlife-viewing opportunities in the Maasai Mara Reserve, also known as the "Jewel of Africa," a site with one of the largest and the most spectacular animal migrations in the world. The reserve is inhabited by many of Africa's most popular wild animals, including lion, cheetah, elephant, leopard, black rhino, and hippo. There are also over 500 resident species of birds in the park including ostrich, larks, and sunbirds as well as the lovely Lilac-breasted Roller.



The area is famous for rolling grassland and for the Mara River, which runs through the reserve from north to south. The reserve covers an area of 700 square miles and forms part of the Serengeti ecosystem, hosting the world-famous spectacle of the annual migration of up to two million wildebeest, thousands of zebra, and an escort of carnivores from the Serengeti plains that follow the rains and succulent new grass. A costly trek as many of the lame, laggard, and sick will fall prey to the ravaging pack of predators and many more will die in the swirling flood waters of the Mara River as they try to cross it. This is the end of the migration as the herds make their trek back to Tanzania, so you should be in a good position to see many lines of wildebeest, but regardless, the Mara has its own resident herds and you're sure to see plenty of wildlife! The Mara also has one of the highest concentrations of cheetahs on the continent, as well as many magnificent black-maned lions.



Try a balloon safari for an exhilarating experience over the savannah as the early sun rises and the animals are more active, as your *optional activity* while you are in the Maasai Mara.

The Mara Serena Safari Lodge is an interpretation of a traditional Maasai Manyatta village of domed huts. Accommodation is offered in 73 guestrooms, all of which have been styled to mirror the circular motif of a traditional Maasai Manyatta village of domed huts. The wide-spaced and secluded rooms have been individually styled in exuberant bush colors and feature large spacious en-suite bathrooms. It is set on the saddle of a hill where it overlooks the 695 square miles of rolling plains, woodlands, and rivers that make up the Maasai Mara Triangle – one of the world's richest wildlife sanctuaries. No other lodge has such a spectacular view of the surrounding landscape or the wildlife and birdlife that inhabit it. It is on this very terrain stretching endlessly before the lodge where the annual migration takes place, where millions of wildebeest, zebra, and gazelle traverse the landscape to feed on the rich new grass and give birth to their young.



Overnights at the MARA SERENA SAFARI LODGE. (B,L,D Daily) www.serenahotels.com

DAY 14~SATURDAY~NOVEMBER 2 **MAASAI MARA/NAIROBI/EN ROUTE**

Enjoy one last chance to photograph that awesome sunrise before flying back back to Nairobi. A day room will be supplied for you at CROWNE PLAZA AIRPORT HOTEL. As your journey comes to a close later this evening, you say a fond farewell to your driver/ guides and naturalist at the airport and promise to return soon. (B, L; Meals Aloft)

DAY 15~SUNDAY~ NOVEMBER 3 **USA**

Today you arrive in the U.S., bringing with you the memories of all the wonderful sights of Kenya. (Meals Aloft)



OPTIONAL POST-EXTENSION TO THE KENYAN COAST



DAYS 14/15~ SATURDAY/SUNDAY ~NOVEMBER 2/3

MAASAI MARA/NAIROBI/MALINDI

Depart on your flight to Nairobi and connect with your flight to Malindi, 75 miles north of Mombasa, and the deep sea paradise that attracted Ernest Hemingway to these waters. This coastal resort, lapped by the aquamarine surf of the Indian Ocean, was visited by Vasco de Gama in 1498, and royally entertained by the local people. The tradition of hospitality has since been enhanced by many Italian residents. Malindi Bay boasts six miles of sandy beaches, plus coral gardens, protected by the Marine National Parks, and teeming with tropical fish. There are several glass-bottomed boats equipped with snorkeling equipment ready to take you out to see the wonders underwater, and fishing charters for those who want to pursue blue marlin and sailfish.



On your second day here visit Arabuko-Sokoke Forest, the largest remaining area (163 square miles) of indigenous coastal forest in East Africa. The forest contains six species of globally threatened birds, including the Clarke's Weaver, which is found nowhere else in the world. Rare

mammals are also present, including the golden ramped Elephant Shrew, Bushy-tailed Mongoose and Adder's Duiker. One of the joys of the forest is that, with the exception of the Adder's Duiker, a quiet walk through the forest with your guide will generally provide sightings of all these rare birds and mammals. Arabuko-Sokoke Forest is ranked among the most important forests in Africa for its bird conservation value. Seasonal water pools, especially near the Arabuko Swamp on the northern edge of the forest, are deluged with birds when flooded. It is the global stronghold for the Spotted Ground Thrush, and five other globally vulnerable species such as Sokoke Scops Owl, Sokoke Pipit, East Coast Akalat, Amani Sunbird, and the Clarke's Weaver, found only here.

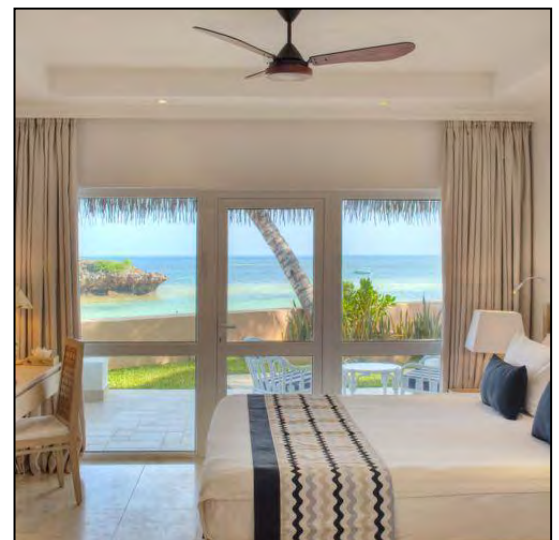


The Elephant Shrew has the shape of a rounded pig, with a bright gold-circled bottom and a long elephant shaped nose. Rarely seen but also found in the forest are elephant, buffalo, leopard and hyena. The forest is also home to over 260 species of butterflies, including the large and highly colored, yellow, purple, red and black Swallow tails and Char axes species. These butterflies are now being bred as a community conservation project; to help protect the forest, whilst benefiting the outlying forest communities. You'll enjoy a morning spent in the forest, learning about the traditional medicine plants, wood carving woods and other cultural uses for this fertile area.



You will also visit Mida Creek upon your return, a mangrove bounded haven for a host of birds. This tidal inlet is comprised of different types of habitats influenced by water, such as open shallow waters, mangrove forests and mud and sand flats. Mida Creek is a recognized International Bird Area and together with Arabuko-Sokoke Forest forms a UNESCO Biosphere Reserve. It is not only a paradise for national waterfowls, but also migrating birds from Europe and Eurasia who find a place to rest during their journey or to winter. Feeding grounds for many species of fish such as Jacks, Snappers, Groupers, Rabbit Fish, Parrotfish, Emperors, and Barracuda, the Creek is rich in aquatic flora with 11 seagrass and 33 seaweed species alongside 9 species of mangrove. An important passage and wintering area for Palaearctic migrant waders, there are large populations of roughly 65 species of aquatic birds, including 7 species of waders which are regionally threatened. Birds here include the Greater and Lesser Sandplover, Crab-plover, Dimorphic Egret, Lesser Crested and Roseate Tern, Sanderling, Curlew Sandpiper, Little Stint, Whimbrel, Grey Plover, and Greater and Lesser Sandplover. Mida Creek is also an important feeding and development area for green and hawksbill sea turtles.

Your home for the next two nights is nestled nearby in the white sands of Watamu, 14 miles south of Malindi. Hemingways Resort offers 74 luxury bedrooms and suites within earshot of the surf, all having views of the activities of Hemingway's deep sea fishing fleet. Each room offers en suite facilities, air-conditioning and ceiling fan, balcony, mini-bar and coffee/tea making facilities. Besides the outdoor swimming pool you can windsurf, play tennis, fish, ride horses and enjoy the beach. There is also a bar dedicated to the master himself in which many a tale is told. And yet, as many who have been to the resort will tell you, one of the principal attractions is the food; it is inspired and ranks among the best in the world. Add to this, the impeccable service, the water sport and fitness facilities and the legion opportunities for big game safaris and you have all the ingredients for a memorable encounter with Africa. Free Wi-Fi.
Overnights at HEMINGWAYS WATAMU.(B,L Daily)
<https://www.hemingways-collection.com/watamu/>



DAYS 16/17~ MONDAY/TUESDAY ~NOVEMBER 4/5

MALINDI~ WATAMU NATIONAL MARINE PARK/DIANI BEACH

You will spend a leisurely morning exploring this underwater world. The Watamu National Marine Park boasts over 600 species of fish in just 3.8 square miles, although the reserve area itself spreads out over more than 12.3 square miles in

total. It is virtually impossible to snorkel without seeing at least a few dozen species inside the main reef; divers outside the fringe reef stand an excellent chance of viewing the magnificent whale shark and Manta Rays that are seasonal visitors. Some of the more commonly seen fish include of course the parrotfish, whose digestion of the coral reef over the millennia has produced the white sand beach itself. Angelfish, groupers, filefish, lionfish and snappers are just a handful of the easily seen species within this superb, brightly colored underwater world.

Afterward transfer to Diani and to your home for the next to nights, The Sands at Nomad Hotel.



On your second day travel to the coastal plains of Shimba Hills National Reserve, a 320-square-mile tract located 1,640 feet above sea level, just a short distance from the Indian Ocean. Its rolling meadows, forests of giant, primeval trees and gentle hills are home to leopard, zebra, ostrich, warthog, lion, a relatively large number of elephant and the last remaining breeding population in Kenya of the rare, indigenous sable antelope with its impressive near-black coat. The Maasai giraffe was introduced into the reserve during the 1990s, plus the lush scenery makes for an incredible backdrop to see rare and unusual species such as black and white colobus, serval cat, red duiker, black-faced vervet monkey, golden-rumped elephant shrew and the Suni antelope.

The reserve hosts 50% of the 159 rare plants in Kenya including some endangered orchid species, and this lush, verdant ecosystem facilitates a rich insect and avian environment. About 35% of Kenya's butterfly species occur here, including the endemic, boldly patterned black and white Roger's Sailer butterfly, plus numerous species of Swallowtail and Swordtail butterflies. Walking along the trail to the spectacular Sheldrick Falls with its cool, inviting swimming pool, watch for foot-long, red-legged millipedes scurrying amidst the forest floor.



The small, but diverse ecosystem of the reserve provides a wealth of birding opportunities during your wildlife drives and walks. Look for the colorful plumage of the Fischer's Turaco, and the red-belly of the Narina Trogon as it shyly perches in the trees. Flitting among the forest flowers is the iridescent Uluguru Violet-backed Sunbird, while the Spotted Ground Thrush lingers in the shadows. This is one of the last strongholds of the little 'robin of

the forest,' the East-coast Akalat and the Sokoke Scops Owl, recently discovered in 1966. Sometimes you may even see the unusual Palm-nut Vulture feeding on the fruits of the palm tree.



Your luxury boutique hotel is located in Ukunda looking out onto Diani Beach. Nestled beside 26 acres of pristine coastal forest and a palm-fringed beach, it has 37 rooms with lots of Swahili style in its design and a variety of areas and restaurants to occupy your time. Each room is fitted with a minibar and air conditioning. Featuring a shower, private bathrooms also come with a hairdryer and towels. The hotel features an outdoor pool, and a spa area. There are two first-class restaurants, a sushi bar and a pizzeria. Cocktails, refreshments and snacks can be enjoyed at the pool bar. Plenty of activities can be enjoyed on site or in the surroundings, including windsurfing, kitesurfing, diving and snorkeling. Free Wi-fi.

Overnights at THE SANDS AT NOMAD HOTEL. (B,L Daily) <https://www.thesandsatnomad.com/>



DAY 18~WEDNESDAY~NOVEMBER 6

DIANI/NAIROBI/ EN ROUTE

It is time to bid farewell to East Africa as you transfer to the airport for your flight to Nairobi. A day room will be supplied for you at CROWNE PLAZA AIRPORT HOTEL. As your journey comes to a close later this evening, you say a fond farewell to your driver/guides and naturalist at the airport and promise to return soon. (B, L; Meals Aloft)

DAY 19~THURSDAY~NOVEMBER 7

USA

Today your jet lands in the U.S., bringing with you the memories of all the wonderful sights of East Africa. (Meals Aloft)



OPTIONAL EXCURSIONS IN THE MAASAI MARA & AMBOSELI

Experience an exhilarating balloon safari for the most incredible way of viewing wildlife. It begins in the early morning after you observe the inflating of the balloon, and you have an hour of uninterrupted views of wildlife from the air – the best way to see the incessant movement of animals and the fabulous vistas of Tanzania and Kenya. During the flight, you will ascend to a high altitude to take in an amazing panoramic view and then descend to treetop level and silently glide above the wildlife below. Upon landing, enjoy a “bubbly” brunch, set especially for you in the middle of the plains. Zebra and elephants may be your dining guests, and Africa’s colorful birds may vie for a crumb of your bread. You then meet with your driver/guide and continue your safari. Many consider this one of the most memorable experiences of their safari.



Flying high up in the skies of the **Maasai Mara Game Reserve**, you view an endless magical array of savannahs, rivers, forests, and escarpments. If your visit is between July and October, the Mara plays host to the great migration, and there’s nothing like this unparalleled phenomenon of migrating herds of zebra, wildebeest, and gazelle to view from the air. But, whether the migration is in the Mara or not, watching predators such as lions and cheetahs hunting their prey, and looking for all the marvels of the bush, is exciting and never gets old!

From the sunrise to the East, the magnificent Mt. Kilimanjaro to the south, and the **Amboseli National Park** immediately to the north, you will see a full array of wildlife, including the area’s renowned elephant herds. From the air, see the Maasai manyattas and varied topography of Amboseli, and relish the feel of floating as the earth comes alive and the sky is painted with colorful strokes at sunrise.

- Maasai Mara with collection from your lodge – Mara Serena Lodge: \$500 per adult (including children 12 and over) and \$300 per child ages 3-11 years who must be accompanied by an adult on the balloon.
- Amboseli with collection from your lodge – Amboseli Serena: \$450 per adult (including children 12 and over) and \$350 per child ages 3-11 years who must be accompanied by an adult on the balloon (currently, subject to change).
- **These prices are as of September 14, 2023 and subject to change.**

Reservations for this excursion are necessary before departure from the USA if you wish to be guaranteed a seat. Full payment must be forwarded to Classic Escapes, 191 W Poplar Street, Floral Park, NY 11001 to be received at least before weeks prior to departure. If your trip does not materialize due to weather or other reasons, your payment will be refunded upon returning to the U.S.A. However, if you should cancel for any reason, payment is non-refundable.



INCLUSIONS

- Flight between Amboseli/Nairobi and Maasai Mara /Nairobi on the main program.
- Flight between Nairobi and Malindi, returning from Mombasa on the post extension.
- Superior accommodations throughout as indicated or similar.
- American breakfast in Nairobi; all meals while on safari; other meals as specified.
- Welcome dinner at the Carnivore.
- All wildlife viewing by land cruisers, driven by a naturalist driver/guide.
- Albert Mitcho, a professional naturalist will accompany the group with a minimum of 10 travelers on the main program only.
- A maximum of 6 travelers per vehicle. A window seat is guaranteed.
- Visit to the Chimpanzee Sanctuary in Sweetwaters, as well as Bird walk, night run and visit to Northern White Rhinos.
- Tony Vecchio will accompany the group with a minimum of 10 travelers on the main trip and 6 travelers on the extension program.
- Complimentary bottled water in vehicles.
- All park entry fees.
- Gratuities for baggage handling, hotel tips, and taxes for included services.
- Complimentary water bottles and luggage tags.
- Emergency evacuation insurance.

EXCLUSIONS

- Round trip air transportation between USA and Nairobi. If you require assistance with air arrangements, contact Classic Escapes.
- Gratuities should only be given as a reward for exceptional service and are at your discretion. *We estimate \$15 per person/per day for the specialist guide. \$15 per person/per day for the safari driver. \$10 per person/per day for the camp staff. \$5 per person for each arrival and departure transfer from the airport/hotel. These are daily per-service estimates and an exact tipping chart will be detailed on your final itinerary.*
- Passport and visa fees and service charges for obtaining visas.
- Excess baggage charges levied by airlines.
- Meals and beverages, other than specified.
- Laundry and other items of a personal nature.
- Personal and baggage insurance.
- Cost for anything not specifically mentioned in the listing above.

PLEASE NOTE THE ITINERARY SEQUENCE IS CORRECT AT THE TIME OF WRITING BUT IS SUBJECT TO CHANGE.
--



SAFARI AIR LUGGAGE RESTRICTIONS

It is of vital importance that all guests traveling to Kenya strictly adhere to the luggage limits and regulations as stipulated below.

Please note:

LUGGAGE WEIGHT LIMIT PER PERSON *	33 Lbs. (15 kg) – total weight inclusive of luggage and hand luggage/camera equipment/laptops etc.
LUGGAGE TYPE	Soft-sided (all sides) bags – no hard-shelled bags or frames allowed. Wheels should be avoided.
LUGGAGE DIMENSIONS**	35.4 inches high x 25.5 inches wide x 13.7 inches deep.

**This is the total weight including both luggage and hand luggage/camera equipment.*

This is a safety requirement due to the sensitive weight and balance checks on small aircraft and must be strictly adhered to. Travelers who require additional luggage must pre-book and pay for this on confirmation of the reservation. We would like to remind you that laundry services are available in all camps and lodges.

****Please keep in mind** most of internal flights are operated by aircraft whose luggage compartments have limited volume and are of an irregular shape. It is thus more difficult for the pilots to stow large rigid suitcases, which in an extreme situation, might have to be carried on the next available flight.



HANDLING OF INCORRECT LUGGAGE ON ARRIVAL

The carriage of excess baggage is at the sole discretion of the Company after taking into consideration the aircraft being used and the number of passengers booked. When excess baggage is carried it will be charged at the prevailing rate. Excess luggage is charged at USD 5.00 per kilogram (2.2 lbs.). Guests who are unable to depart on the scheduled charter will be given the option to book a private charter at additional costs to be paid directly before departure and subject to the availability of aircraft at the time of booking these flights. No refunds on the costs paid for scheduled charters that were missed due to their incorrect luggage and or accommodation not provided due to this delay will be provided. In all cases, additional arrangements for transfers, overnight accommodations, and meals are on the guests' own account. **If passengers have significant excess baggage, it is recommended they book a 'freight' seat at an adult rate, which permits confirmed carriage of an extra 75 kgs.**

ASSISTANCE WITH BAGGAGE PRIOR TO ARRIVAL

Should guests be traveling with the incorrect luggage and require assistance with storage (which we offer at no additional cost) or transportation to their point of departure from Kenya (transportation costs apply), this can be arranged provided this has been brought to our attention before their arrival in Kenya, preferably at the time of final booking confirmation.

THINGS YOU NEED TO KNOW ABOUT EAST AFRICA

Participants

- Participants must be able to climb in and out of mini-buses unassisted. They should also be able to tolerate riding on uneven, bumpy dirt roads for long periods of time (6-9 hours maximum), as well as some off-road experiences when opportunities allow.
- Participants should also be able to stand and/or walk moderate distances at an easy pace for up to a few hours at a time when visiting villages, towns, or other sites. Some, if not most, of this walking may be on uneven ground or uphill, often at higher elevations and altitudes that many people are not used to.

General

- True adventure in travel can sometimes be accompanied by unexpected changes in conditions, itineraries, and occasionally your accommodations.
- Participants should travel with a spirit of adventure and flexibility. Remember to pack your patience and sense of humor! Be willing to look past self-imposed ideals of Western amenities and do not compare these new experiences with your life back home. Travel often includes visiting destinations with modest infrastructures and a bending definition of comfort.
- That being said, some locations are nestled in absolute luxury where pampering is the norm. Participants should generally be in good health and prepared to travel to locations without medical facilities.

Air Schedules

The cost of your program does not include international airfare. If you require assistance, please contact Classic Escapes at 718-280-5002 and we will happily provide air quotes to you. You may make your own international air arrangements, but please ensure you arrive/depart on the correct dates. Contact your Journey Manager at Classic Escapes to verify the dates to ensure there are no errors. **The start and end city for the land-only program are Nairobi, Kenya.**

Upon registration, you must provide your full legal name as it appears on your passport. In the event an airline ticket is issued with incorrect information you have provided, you will be responsible for charges associated with reissuing the ticket.



BRING-A-BOOK FOUNDATION

Your safari will include a visit to a local school. We encourage you to bring colorful books and magazines, as well as school supplies such as pens, paper, crayons, soccer balls, etc., which you can present to the children during your visit. Many of these children have never owned a book in their life and the connection you'll make with them is invaluable. You'll find that children in the schools are eager to meet with visitors, practice their English, learn about your culture, and proudly share their own. You are often welcomed with a local song or dance.

After seeing schools firsthand, meeting the dedicated teachers working under the most difficult conditions, and children hungry for knowledge, many travelers have wanted to help the schools they visited or continue to support a child's learning opportunities after they return to their homes. Bring-A-Book is an innovative effort adopted by Classic Escapes to expand education opportunities for school children. The Bring-A-Book Foundation is a registered Kenyan Charitable Trust that was created as a way to facilitate travelers' wishes to help the schools and is used to get books into the hands of children as quickly and economically as possible. With compassionate ground operators such as Rangers Safaris, Wilderness Safaris, and &Beyond, Classic Escapes has expanded the reach of BAB to Tanzania, South Africa, and Zambia, and plans to expand to other countries as well. Information will be given to you with your final documents, but if you wish to help further, feel free to call Classic Escapes at 800-627-1244 for details.



CLASSIC ESCAPES CONSERVATION FUND

In keeping with our mission to provide exciting, educational, and fun-filled experiences that nurture and directly support the diverse wildlife and cultures we visit around the world, Classic Escapes has established the Classic Escapes Conservation Fund to ensure that a percentage of all profits go to support conservation and wildlife researchers performing their critical work in the field. Project support has included wild dog, elephant, rhino, and cheetah conservation in Botswana, Kenya, Tanzania, and Namibia, penguins in Punta San Juan Peru, tiger preservation in India, and sponsoring school children in Kenya, among many other projects around the world. By traveling with Classic Escapes, you are supporting travel as a tool for building the mutual respect, awareness, and understanding that are vital to preserving this planet for future generations.

YOUR JOURNEY AT A GLANCE

INCLUDING: NAIROBI, AMBOSELI NATIONAL PARK, THE ARK, OL PEJETA, LAKE NAKURU, LAKE ELEMENTITA, LAKE NAIVASHA & THE MAASAI MARA

HOSTED BY: FRIENDS OF THE JACKSONVILLE ZOO

ESCORTED BY: TONY VECCHIO

DATES: OCTOBER 20 TO NOVEMBER 3, 2024

COST: RATES ARE PER PERSON, BASED ON DOUBLE OCCUPANCY	MAIN PROGRAM BASED ON 10 TRAVELERS	POST EXTENSION TO KENYAN COAST BASED ON 6 TRAVELERS
LAND PACKAGE ONLY	\$10,995 PER PERSON	\$3,295 PER PERSON
SINGLE ROOM SUPPLEMENT*:	\$1,995 PER PERSON ADDITIONAL	\$795 PER PERSON ADDITIONAL

* SINGLE SUPPLEMENTS ARE VALID FOR THE FIRST TWO SINGLE ROOMS BOOKED. IF MORE THAN TWO SINGLE ROOMS, AN ADDITIONAL SUPPLEMENT MAY APPLY. SINGLES ARE ASSIGNED ON A FIRST COME/FIRST SERVE BASIS.

INTERNATIONAL AIR ARRANGEMENTS: The cost of your program does not include international airfare. If you require assistance, please contact Classic Escapes at 718-280-5002 and we will happily provide air quotes to you. You may make your own international air arrangements, but please ensure you arrive/depart on the correct dates. Contact your Journey Manager at Classic Escapes to verify the dates to ensure there are no errors. **The start and end city for this program is Nairobi, Kenya.**



CONDITIONS OF TRAVEL:

The purchase of your travel booking constitutes a contractual agreement between the traveler(s), customer(s), and/or purchaser(s) (collectively as "**You**" and "**Traveler**"), and Classic Escapes ("**Classic Escapes**", "**We**", "**Us**") pursuant to the following terms and conditions ("**Terms**", "**Agreement**"):

REGISTRATION & PAYMENTS

HOW TO BOOK: Fill out and sign the enclosed reservation form and send it, along with the relevant deposit as shown below, to: CLASSIC ESCAPES, 191 W Poplar Street, Floral Park, NY 11001 Upon receipt of your signed reservation form and deposit, we will, subject to availability, reserve your spot on the tour. You may consider your booking confirmed when you receive a confirmation notice and invoice from us.

DEPOSIT AND FINAL PAYMENT: You will be required to pay the following per-person deposits when booking. Those amounts are:

- \$2,200 for the main trip
- \$750 for the post extension

All deposits are subject to the Cancellation policy herein. Final payment is required no less than 95 days prior to departure (July 17, 2024) unless otherwise stated. Some fares or services must be paid in full at the time of booking. Payments may be made by check or with a credit card (American Express, Visa, MasterCard, or Discover.) Conditioned on receipt of final payment in full, all final documents and air tickets will be sent to you approximately two weeks prior to departure.

CREDIT CARD TRANSACTIONS: If for any reason, any travel service provider is unable to provide the services for which you have contracted, your remedy lies against the provider, and not against Classic Escapes, and in the event that payment has been made to Classic Escapes by credit card, you agree that you will not seek to chargeback your payment to Classic Escapes. If the credit card is passed through to the travel service provider and you seek to chargeback your payment from the provider, you agree to be held liable and indemnify Classic Escapes against this chargeback from the provider, including without limitation any air debit memos charged to Classic Escapes. If the credit card is declined, you guarantee that you will settle any amounts owing to Classic Escapes via money order or cash immediately. Except in cases of fraud, you agree not to file any dispute with your bank or credit card company to avoid or violate any booking terms and conditions of Classic Escapes or its suppliers, including cancellations or changes of itinerary or arrangements for reasons beyond the control of Classic Escapes or its suppliers. If you attempt to chargeback, reverse, or recollect a previously authorized trip payment, Classic Escapes reserves the right to collect all additional costs, fees, and expenses associated with such chargeback, reversal, or recollection, including, without limitation, attorney fees.

IMPORTANT CONDITIONS: Prices are subject to increase prior to the time you make full payment. Prices are not subject to increase after you make full payment, except for charges resulting from increases in government-imposed taxes or fees. By signing the reservation form, you expressly acknowledge your acceptance of these conditions (i.e., increases before full payment and increases attributable to government-imposed taxes or fees after full payment will be your responsibility) applicable to your purchase.

RATES: Rates are based on the minimum number of guests outlined in this document, plus airfare costs, currency exchange rates and other factors and are subject to change. Though it is rare for Classic Escapes to make a price adjustment after promotion of an itinerary, we do reserve the right to assess a surcharge if the minimum is not met, or if increases are forced upon us by airlines or other partners or because of changes in currency exchange rates.

ADDITIONAL FEES: Additional taxes and surcharges that cannot be pre-collected may be charged locally. Cost of passport and visa fees and service charges for obtaining visa fees; excess baggage charges levied by airlines; laundry and other items of a personal nature; optional travel insurance policy(s); or any other costs incurred that cannot be pre-collected are NOT included and are the sole responsibility of the Traveler.

SINGLE SUPPLEMENT: The quoted rate is valid for the first two single rooms booked and on a first-come, first-served basis. If more than two single rooms are needed, an additional supplement may apply. Single accommodations are not guaranteed but will be provided at additional cost if available (see 'Your Journey at a Glance' section for the cost.) The single-room supplement pays for privacy, not better accommodations. For passengers who are traveling alone and wish to share a room with another tour member, we will do our best to provide a roommate. However, if this is not possible, you will be required to pay the single room supplement prior to your departure from the USA.

GRATUITIES, ENTRANCE FEES & TAXES: Gratuities for baggage handling, service charges and taxes imposed by hotels, and entrance fees to all points of interest as outlined in the itinerary are included in the final cost. U.S. and foreign airport taxes are included in air costs. Tips to drivers and specialist guide(s) are **not** included and are the sole responsibility of the Traveler.

CANCELLATIONS, DEVIATIONS & CHANGES

TRAVEL INSURANCE: We recommend travel insurance. Travel insurance can provide financial reimbursement should the unexpected occur.

CANCELLATION: Please be aware that most travel bookings are non-refundable and canceled bookings will incur charges. These charges can be up to 100% of the cost of the booking, regardless of whether travel has commenced. Where we incur any liability for a cancellation fee or charge for any booking that you cancel, you agree to indemnify us for the amount of that fee or charge. Cancellations are only effective upon receipt of written notification. The following per-person fees are applicable; however, depending on the specific itinerary or other factors, we may require a non-refundable deposit:

- Up to 6 months prior to departure (April 23, 2024), \$300 per person administrative fee.
- 179 days to 96 days prior to departure (April 24 to July 16, 2024), \$300 per person administrative fee, plus \$500 non-refundable deposits given to suppliers.
- 95 days to 76 days prior to departure (July 17 to August 5, 2024), deposit is forfeited.
- 75 days to 60 days prior to departure (August 6 to August 21, 2024), 50% refund is possible.
- 59 days or less prior to departure (August 22, 2024), no refund is possible.

These cancellation fees are also in addition to any fees imposed by airlines.

REFUNDS: While Classic Escapes uses its best endeavors to ensure that all anticipated accommodation is available as planned, there is no claim of any nature whatsoever against Classic Escapes for a refund, in whole or in part, if any accommodation or excursion is unavailable and a reasonable alternative is not found, or if the Traveler is unable to use any service provided in the itinerary.

CHANGES: Once your tour is reserved, changes to the itinerary are possible subject to the availability of air or land space at the time of your request. Should there be any change fees imposed by any airlines or ground operators, or additional costs incurred due to the availability of any space, these costs will be invoiced to you and you will be responsible for payment thereof.

SPECIAL ARRANGEMENTS: Should you wish to make additional travel plans, including specially arranged pre- or post-tour extensions different than those offered in conjunction with your tour, a service charge of \$150 per person (over and above the cost of the services required) will be assessed.

DOCUMENTS

PASSPORTS: All individuals departing from the United States of America must be in possession of a valid passport. Please check that your passport is valid for at least 6 months beyond your intended return date. It is your responsibility to ensure that you have valid travel documentation, including but not limited to passports and visas, which meet the requirements of immigration and other government authorities at every destination. You are responsible for confirming with the United States Department of State or the representative government agency of the country to which you are traveling to confirm the requirements for visas and/or other requirements for admission to your destination. Any fines, penalties, payments, or expenditures incurred as a result of such documents not meeting the requirements of those authorities will be your sole responsibility.

REAL ID: Beginning October 1, 2021, if you plan to use your state-issued ID or license to fly within the U.S., it is your responsibility to make sure it is REAL ID compliant. If you are not sure if your ID complies, please check with your local state Department of Motor Vehicles or visit www.tsa.gov/real-id.

TRAVEL DOCUMENTS: It is the responsibility of each Traveler to obtain and carry a valid passport, visa(s), and all other documents required by applicable government regulations. When traveling domestically or internationally, the U.S. Transportation Security Administration (TSA) and U.S. Department of Homeland Security (DHS) advise that everyone carry acceptable identification in order to board a flight. Acceptable identification can be found at <http://www.tsa.gov/traveler-information/acceptable-ids>. The name, date of birth and gender that appears on the identification card must exactly match the same such data that is listed on airline ticket(s) and booking records. You acknowledge any failure to strictly comply with these requirements may result in denied boarding or an undue delay at an airport security checkpoint causing the Traveler to miss flight(s), and subsequent scheduled travel bookings on cruises and tours.

Travel documents include, without limitation, airline tickets, hotel vouchers, tour vouchers, or any other document (whether in electronic form or otherwise) used to confirm an arrangement with a service provider. Travel documents may be subject to certain conditions and/or restrictions such as, but not limited to, being non-refundable, non-date-changeable, and subject to cancellation and/or amendment fees. Travel documents cannot be transferred to another person to use. All airline tickets must be issued in the name of the passport/photo identity holder. An incorrect name on a booking may result in an inability to use that booking and the canceled. Any errors in names, dates, and timings may result in an inability to use that booking and the booking being cancelled. Any

errors in names, dates, and timings on your documentation will be your responsibility if we are not advised at the time of booking. Please reconfirm your flights at least 24 hours prior to departure.

PRE-DEPARTURE INFORMATION: Upon receipt of your registration and deposit, we will send you an electronic pre-departure packet containing all the information you need to prepare for your tour, including the complete itinerary, packing checklist, required documents, insurance information, etc.

FINAL DOCUMENTS: Electronic final documents and air e-tickets will be sent to you approximately two weeks prior to departure, provided all monies have been paid in full.

TRANSPORTATION

AIR TRANSPORTATION: Your program does not include international airfare. If you require assistance, contact Classic Escapes.

FREQUENT FLYER MILEAGE: Check on the airline's website to enquire who their partners are. Obtain frequent flyer mileage on any of these carriers. Present your frequent flyer card for all flight check-ins and keep the boarding passes until you receive a statement with the mileage credit.

TRANSFERS: Roundtrip airport transfers are included in the tour for guests arriving on group flights. If travelers make their own air arrangements, they will be subject to extra transfer fees.

FLIGHT CONFIRMATION: We strongly suggest that you reconfirm exact flight times with the carrier prior to departure. Air travelers are required to check in at least 2 hours prior to departure time for domestic flights and 3 hours for international flights and must report to the gate at least 30 minutes prior to departure time. Failure to comply may result in the loss of the seat to another passenger.

HAZARDOUS MATERIALS: Federal law prohibits passengers from bringing hazardous materials on the aircraft. Federal law forbids the carriage of hazardous materials aboard aircraft in the passenger's luggage or on the passenger's person. A violation can result in five years' imprisonment and penalties of \$250,000 or more (49 U.S.C. 5124). Hazardous materials include explosives, compressed gases, flammable liquids and solids, oxidizers, poisons, corrosives, and radioactive materials. Examples: Paints, lighter fluid, fireworks, tear gases, oxygen bottles, and radiopharmaceuticals. There are special exceptions for small quantities (up to 70 ounces total) of medicinal and toilet articles carried in the passenger's luggage and certain smoking materials carried on the passenger's person. For further information, each passenger should contact the relevant airline representative(s) on their itinerary. Restrictions on hazardous materials are listed <http://www.tsa.gov/traveler-information/prohibited-items>.

INSECTICIDE NOTICE: Some countries require insecticide spraying of aircraft prior to a flight or while you are on the aircraft. We recommend that you refer to the Department of Transportation's list of airports in countries that require airlines to treat the passenger cabin with insecticides prior to the flight or while on the aircraft available at <https://www.dot.gov/office-policy/aviation-policy/aircraft-disinsection-requirements>.

BAGGAGE & FEES: Additional fees for baggage may apply. Please contact your airline or refer to its website for detailed information regarding its checked baggage policies. On average, international flights from the USA allow one piece of checked luggage, not exceeding 50 pounds, plus a carry-on piece not exceeding 15 pounds; however, we always recommend that you check your airline's policy just before departure, as luggage limitations are always subject to change. There may also be luggage and weight restrictions for your destination and that information will be forwarded to you with your pre-departure material and also listed on your final documents.

LUGGAGE ALLOWANCES ON INTERNAL FLIGHTS: Your journey includes internal flights aboard light aircraft which are designed with a maximum luggage allowance; this is closely monitored by the flight operators for safety reasons. You are allowed one carry-on and one piece of luggage, total weight: **33 lbs. (15 kgs.)** per person including the camera equipment. Further, soft-sided duffel bags are **preferred, without wheels**, as they stow best in vehicles and airplanes with limited space.

PERSONAL WEIGHT ALLOWANCES ON INTERNAL FLIGHTS: Your journey includes internal flights aboard light aircraft which are designed with a maximum body weight and luggage allowance; this is closely monitored by the flight operators for safety reasons. If your personal weight exceeds **85 kilos (187 lbs.)** it may be required to purchase an extra seat and your Classic Escapes Journey Manager will contact you should this be necessary.

AIRLINE CLAUSE: The airlines concerned are not to be held liable for any act, omission, or event during the time the passengers are not on board their planes or conveyance. The passengers' tickets in use by the airline or by other carriers concerned when issued shall constitute the sole contract between the airlines and the purchaser of these tickets and/or passengers.

DELAYS: We cannot be held liable for any delays or additional costs incurred as a result of airlines not running to schedule. Any additional land or air fees imposed on account of airline delays will be borne by the traveler.

TRIP DETAILS

ACCOMMODATIONS: You will marvel at the wonderful accommodations provided throughout your tour. All rooms have private bathroom facilities and air conditioning and/or fans, unless otherwise specified. All rates are based on double occupancy. Most rooms are twin-bedded, but king-size beds are occasionally available and should be requested in advance. Accommodations listed in this itinerary are correct at time of writing, but on rare occasions may be substituted for a different property of comparable quality.

MEALS: All meals as specified in the itinerary. Please notify us if you have special dietary needs or requests, and we will do our best to accommodate.

WATER: It is always advisable to drink bottled and/or filtered water when traveling overseas. Safe drinking water will be provided to travelers free of charge in the vehicles and during meals.

PHOTOGRAPHY: The Company reserves the right without further notice to make use of any photograph or video taken on the tour by our photographers without payment or permission. We guarantee that no photographs of a compromising nature will be used.

GUIDES: If one of Classic Escapes' guides are unable to take a trip due to circumstances out of our control (i.e., illness, etc.), we reserve the right to substitute with another guide.

TOUR ITINERARY: To the best of our knowledge the itinerary is correct at the time of printing. We cannot be held responsible for any inaccuracies or changes that may occur after printing.

HEALTH AND SPECIAL REQUIREMENTS: You must have the proper immunizations and health screenings and required documentation of such immunizations and screenings before travel. It is your responsibility to ensure you are aware of any health requirements, health advisories, or health travel restrictions applicable to your travel destinations and to ensure that you carry all necessary vaccination documentation. Classic Escapes is not responsible for providing you with this information. Travel carriers and local authorities at travel destinations may require specific testing prior to boarding and/or upon arrival at your destination, including, but not limited to, a temperature check as a result of the COVID-19 pandemic. You may be denied entry onto your carrier and/or entry upon arrival at your destination or be required to self-quarantine at your destination and upon your return to the United States. You must comply with local government regulations. Any additional costs are your responsibility. Check the State Department Web site <http://travel.state.gov>, for relevant information relating to travel to specific destinations, and the Center for Disease Control <http://wwwnc.cdc.gov/travel/> relating to health issues related to travel.

You must be in good physical and mental health. It shall be your duty to inform us in case you have any medical condition that may affect your ability to enjoy and pursue fully the services of Classic Escapes. By registering for a Classic Escapes service/program, you certify that you do not have any mental, physical, or other condition or disability that would create a hazard for yourself or others.

COVID-19 ACKNOWLEDGEMENT

In order to participate in one of our tours, travelers must certify that they have not recently been treated for, nor are aware of any physical or other condition or liability that would create a hazard to themselves or other members of the tour and agree to comply with all health protocols as directed by Classic Escapes and their representatives during their journey. Travelers must maintain suitable physical distancing and frequently wash or sanitize hands throughout their journey. Travelers are required to follow guidelines established by local regulations which may include wearing masks in vehicles, indoor areas, and any outdoor areas where physical distancing is not possible. Explicit instructions will be provided by our guide on arrival. Noncompliance with these procedures will result in the suspension of the journey. **Travelers voluntarily assume all risks and related expenses in the event that they or any member of their traveling party require testing, quarantine, or become infected with COVID-19.** Classic Escapes will endeavor to provide assistance wherever possible.

TRAVEL INSURANCE: For your protection, we strongly recommend that you purchase trip cancellation and travel accident insurance. However, no representation or description of the insurance made by Classic Escapes to you constitutes a binding assurance or promise about the insurance. Classic Escapes is not an insurance company and has no responsibility for the submission, payment, or adjustment of any insurance claims. Any insurance claims that may fall under the relevant travel insurance policy must be submitted to the insurance company identified in the policy. We recommend the following service - please visit the website to enroll: <http://www.travelguard.com/classicescapes/>. Any questions about what travel insurance does or does not cover should be addressed directly to the travel insurance company, Travel Guard at 1-866-385-4839 and reference ARC #71298. If you decline insurance coverage, you will personally assume full responsibility for any financial loss associated with your travel arrangements, and you could lose your

travel investment and/or have to pay more money to correct the situation. THE PURCHASE OF TRAVEL INSURANCE IS HIGHLY RECOMMENDED ON ALL TRIPS.

EMERGENCY EVACUATION COVERAGE: For the convenience of our travelers, Classic Escapes provides a complimentary Medical Insurance Plan during your trip via Travel Guard Group, Inc. This includes:

- Emergency evacuation insurance up to \$100,000.
- Up to \$25,000 medical expense and up to \$500 dental expense coverage subject to the terms and limitations of the insurance policy.
- 24-hour worldwide travel and medical assistance.

Medical Plan (926801)

Please click here to view complete coverage of details.

https://webservices.travelguard.com/Product/FileRetrieval.aspx?CountryCode=US&StateCode=AL&ProductCode=926801&PlanCode=NW&FileType=PROD_PLAN_GM

TERMS & CONDITIONS

TOUR OPERATOR: Classic Escapes acts as a tour operator/travel agent only. Classic Escapes does not own, operate, manage, or control any independent suppliers of services and is not liable for their acts or omissions. Classic Escapes' obligations to you are to make travel bookings on your behalf and to arrange relevant contracts between you and other travel service providers. We have no responsibility for these services, nor do we have the authority to make any warranty or representation regarding their standard. Requests cannot be guaranteed. All bookings are subject to the terms and conditions and limitations of liability imposed by these travel service providers. You understand that your legal recourse is against the specific provider, not Classic Escapes. Conditions can change rapidly in a country at any time. It is your responsibility to check the USA Government Travel advisories for your intended destination at <https://travel.state.gov/content/travel.html>.

RESPONSIBILITY OF THE COMPANY: We always do our best to make sure your travel arrangements are satisfactory. However, Classic Escapes and its employees, shareholders, subsidiaries, affiliates, officers, directors, successors, agents, and assigns do not own or operate any third-party entity that provides goods and services for your travel, including without limitation lodging facilities, airline, vessel, motorcoach, or other transportation companies, local ground operators, providers, food service providers, etc. All such persons and entities are independent contractors and are in no way affiliated to Classic Escapes. We are not liable for any delays or additional costs incurred by the Traveler as a result of any actions or occurrences by any of the foregoing third party entities.

LIABILITY: Classic Escapes is not liable for any negligent or willful act or failure to act of any travel service provider or of any third party.

Because Classic Escapes does not have the right to control the operations of such travel service provider or any third party, you agree that Classic Escapes is not liable for any personal injury or property damage which may arise out of these services. Classic Escapes hereby disclaims any liability whether based on contract, tort, strict liability or otherwise, including without limitation liability for any direct, punitive, special consequential, incidental or indirect damages, in connection with the goods or services provided by any supplier booking through Classic Escapes, including without limitation liability for any act, error, omission, injury, loss, accident, delay or irregularity which may be incurred through the fault, negligence, willful acts, omissions or otherwise of such travel service provider or any third party, or their respective employees, agents, servants, or representatives, including, without limitation, their failure to deliver or their partial or inadequate delivery of services, their cancellation and refund policies, fuel increases, bankruptcy or cessation of operations and other matters outside of Classic Escapes' control, and you hereby exonerate Classic Escapes from any liability with respect to the same.

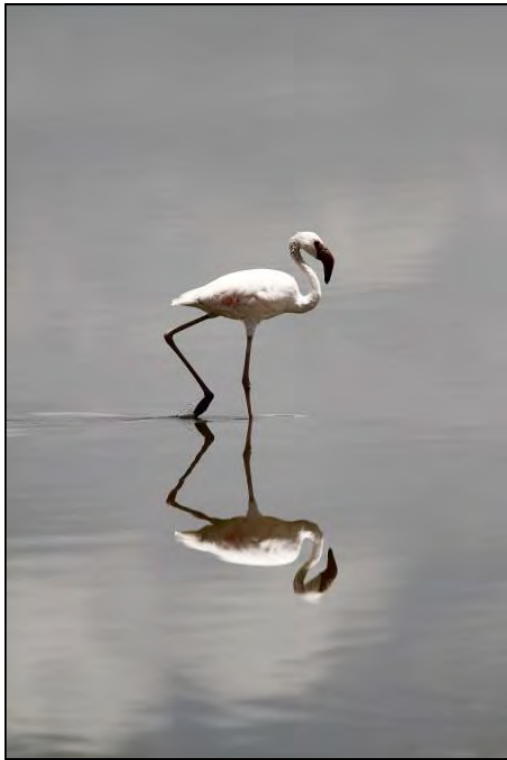
FORCE MAJEURE: Classic Escapes will not be in breach of these terms and conditions or otherwise be liable to you, for any failure or delay in performing an obligation under this Agreement that is due to any of the following causes, to the extent beyond its reasonable control: acts of God, accident, riots, war, terrorist act, illness, disease, epidemic, pandemic, quarantine, civil commotion, breakdown of communication facilities, including web host and internet service provider, breakdown or malfunction of equipment, destruction of or serious damage to facilities, natural catastrophes including, but not limited to extreme weather events, floods and volcanic eruptions, governmental acts or omissions, changes in laws or regulations, national strikes, fire, explosion, generalized lack of availability of raw materials or energy, and any other unforeseen circumstance which is beyond the control of Classic Escapes. THE PURCHASE OF TRAVEL INSURANCE IS HIGHLY RECOMMENDED ON ALL TRIPS.

REFUSAL OF SERVICE: Service providers reserve the right to refuse service to travelers at their sole discretion, including, without limitation, if the traveler: (i) lacks proper documentation for the country of destination; (ii) has a contagious disease; (iii) is under the influence of alcohol, drugs, or narcotics; and/or (iv) manifests disruptive and/or unruly behavior. Classic Escapes assumes no liability for the acts of the service provider in refusing service.

ELECTRONIC OR HANDWRITTEN SIGNATURE: Both parties agree that you may acknowledge and agree to these Terms: (i) electronically; (ii) by handwritten signature; (iii) by any other electronic means, including, without limitation, via email acceptance of these Terms; or (iv) by your implied consent deemed via your actions, which shall include without limitation the payment of the invoice in part or in full or your use of the services provided by Classic Escapes or any other travel supplier related to your booking. All such means will be deemed to constitute effective acknowledgement and execution of this Agreement and shall be sufficient to bind the parties to the terms and conditions of this Agreement.

RESERVATION OF RIGHTS: We reserve the right, in our sole discretion, to change these Terms and Conditions at any time. Updated versions of the Terms will be provided to you, will be posted on our website, and are effective immediately on posting.

GOVERNING LAW: The construction, validity, and performance of these Terms and any disputes between the parties shall be governed by and construed according to the laws of the State of New York, without giving effect to its conflict of law principles, and any federal laws applicable therein. Both parties submit to the exclusive jurisdiction of the courts of the State of New York with respect to any legal proceedings relating to these Terms.



RESERVATION FORM:

JACKSONVILLE ZOO~ KENYA SAFARI

24AFZ1020/Jacksonville

Enclosed is my deposit for \$ _____ (\$2,200 per person for the main trip, plus \$500 for the post extension) to hold _____ place(s) on the classic safari to Kenya with Jacksonville Zoo departing October 20, 2024. Check Your Journey at a Glance for all costs associated to this tour

Final payment due date is **July 17, 2024**

Please make check payable to CLASSIC ESCAPES, 191 W Poplar Street, Floral Park, NY 11001 **OR**

Charge deposit to: ☐ MasterCard ☐ Visa ☐ American Express ☐ Discover

(Credit Card Authorization form needs to be completed and returned to Classic Escapes via mail or fax to 718-204-4726)

A copy of your passport must accompany this form to confirm reservation. Upon receipt of your signed reservation form, passport copy and deposit we will, subject to availability, reserve your spot on the tour. Passport must be valid for at least 6 months after the return of your trip and have four consecutive blank pages in the visa section

1) NAME (As appears on passport): ☐ Mr. ☐ Mrs. ☐ Ms. _____ DOB _____

Passport No. _____ Green Card No. _____ Expiration Date _____ Nationality _____

2) NAME (As appears on passport): ☐ Mr. ☐ Mrs. ☐ Ms. _____ DOB _____

Passport No. _____ Green Card No. _____ Expiration Date _____ Nationality _____

WHAT NAME YOU PREFER TO BE CALLED IF DIFFERENT FROM ABOVE: 1) _____ 2) _____

STREET ADDRESS: _____

CITY: _____ STATE: _____ ZIP: _____

PHONES: HOME: () _____ OFFICE: () _____ MOBILE: () _____

E-MAIL ADDRESS: _____ FAX: () _____

☐ I certify that I have not recently been treated for, nor am I aware of any physical or other condition or liability that would create a hazard to myself or the other members of this tour.

☐ The two of us above are sharing a room and, where possible, would like a room with: ☐ ONE ☐ TWO Beds (Make one selection only)

☐ I am sharing with _____ (form sent separately)

☐ I need assistance in securing a roommate. I understand if one cannot be located for me by final payment date, I agree to pay the additional single supplement amount listed on the Journey at a Glance page.

I prefer to share with: ☐ Smoker ☐ Non-smoker

☐ I desire single accommodations, if available, and will pay the single supplement additional cost

☐ \$500 per person for the Massai Mara Safari (as of September 14, 2023) and subject to change)

☐ \$450 per person for the Amboseli Balloon Safari (as of September 14, 2023) and subject to change)

☐ I/We wish to participate in the Malindi optional extension at an additional per person cost

CLASSIC ESCAPES CAN ASSIST WITH INTERNATIONAL FLIGHT ARRANGEMENTS FROM ANY US CITY.

☐ YES, I WILL REQUIRE ASSISTANCE. PLEASE SEND ME INFORMATION TO DEPART FROM _____
I REQUIRE: ☐ ECONOMY ☐ BUSINESS/FIRST CLASS

We'd love to send you exclusive offers and the latest news from our partners around the world. We'll always treat your personal details with the utmost care and will never sell them to other companies for marketing purposes. ☐ **No thanks, I don't want to hear about offers and news.**

All rates quoted are based on tariffs and value of foreign currencies in relation to the U.S. dollar in effect as of September and are subject to change. Refund is made less any cancellation charges levied in accordance with the policy outlined in the accompanying Conditions of Travel. **WE STRONGLY RECOMMEND THAT YOU OBTAIN TRAVEL INSURANCE. RESERVATIONS ARE ACCEPTED SUBJECT TO OUR CONDITIONS AND WILL BE CONFIRMED ONLY IF ACCOMPANIED BY COMPLETED FORM SIGNED BY THE TOUR PARTICIPANT(S).**

SIGNATURE: _____ DATE: _____

SIGNATURE: _____ DATE: _____

CLASSIC ESCAPES INC.

191 W Poplar Street,

Floral Park, NY 11001

(We recommend that you keep a copy of your selections as noted above for your future reference)



JACKSONVILLE ZOO ~ KENYA SAFARI
OCTOBER 20 TO NOVEMBER 3, 2024

191 W Poplar Street, Floral Park, NY 11001
T: (718) 280-5000; (800) 627-1244
F: (718) 204-4726
E: info@classicescapes.com

CREDIT CARD PAYMENT AUTHORIZATION

Please Note: If you wish to charge your deposit to Visa, MasterCard, American Express or Discover, this authorization form MUST be completed and returned to us along with your reservation form before we can process your application.

I authorize (Classic Escapes Inc.) to charge my VISA/MASTERCARD/DISCOVER/AMEX listed below:

Name appearing on credit card _____

Card number _____ Expiration date _____

Card Verification Number* _____ Card Type _____

Billing address of credit card _____

Amount of transaction _____

Services rendered/Items purchased _____

Phone number _____

Signature _____ Date _____

***How To Locate Your Card Verification Number:**

(Visa, MasterCard, Discover: Locate the credit card number on the back of the card above the signature box. Enter the 3-digit number which follows the credit card number. **American Express:** Enter the 4-digit number found directly above and to the right of the credit card number.)

I understand that all rates quoted on this tour I'm making a payment on are based on tariffs and value of foreign currencies in relation to the U.S. dollar in effect as of September 9, 2022, and are subject to change. Cancellations are only effective on receipt of written notification. The following per person fees are applicable on this tour:

- Up to 6 months prior to departure (April 23, 2024), \$300 per person administrative fee.
- 179 days to 96 days prior to departure (April 24 to July 16, 2024), \$300 per person administrative fee, plus \$500 non-refundable deposits given to suppliers.
- 95 days to 76 days prior to departure (July 17 to August 5, 2024), deposit is forfeited.
- 75 days to 60 days prior to departure (August 6 to August 21, 2024), 50% refund is possible.
- 59 days or less prior to departure (August 22, 2024), no refund is possible.

These cancellation fees are also in addition to any fees imposed by airlines.

PLEASE NOTE: At times, our bank requires photocopy of credit card (both sides) and driver's license or document showing signature of cardholder, in order to process the charge. While it is not required at this time that you include these materials with your deposit, if our bank requests it, we will contact you for these copies.