



YOU'RE CORDIALLY INVITED TO JOIN
TOLEDO ZOO

ON A LUXURY ADVENTURE TO
INDIA

TIGER RESERVES & THE TAJ MAHAL

JANUARY 21 TO FEBRUARY 4, 2025

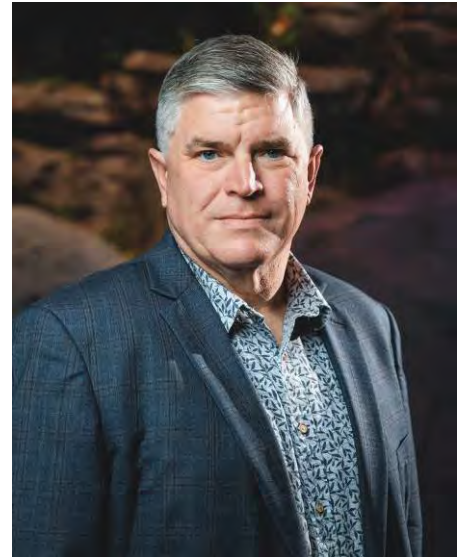


191 W Poplar Street, Floral Park, NY 11001
T: (718) 280-5000; (800) 627-1244
F: (718) 204-4726
E: info@classicescapes.com
W: www.classicescapes.com

For more information, find us on:
 facebook.com/Classic.Escapes.inc
 twitter.com/classicescapes
 instagram.com/classic_escapes

YOUR HOST: JEFF SAILER, PRESIDENT & CEO OF THE TOLEDO ZOO & AQUARIUM

Jeff Sailer, President & CEO of the Toledo Zoo & Aquarium, has always had a passion for wildlife and the natural world. After completing his graduate work in ecology at the University of Florida he embarked on his career in the “zoo world.” He first served as a curator at Miami Metrozoo and then as Director of City Zoos for the Wildlife Conservation Society in New York City. Over the last 10 years, Jeff has led the Toledo Zoo and Aquarium. His focus has been on expanding Zoo conservation programs based on a philosophy of demonstrated impact, as well as providing greater access to the Zoo for the community at large. Connecting people with the wonder and value of nature and providing actions that everyone can take to create a shared space for wildlife is Jeff’s driving interest. His career has taken him to many parts of the world, where he has had the privilege of working with such amazing wildlife as tiger sharks, American alligators, Tasmanian devils, and the birds of the South Pacific and Papua New Guinea, among others. In his free time, Jeff enjoys birdwatching, painting, and travel.



YOUR INDIAN WILDLIFE GUIDE FOR THE PARKS: CONAN MARK DUMENIL

Conan has been leading tours in his native India since 2006. A versatile professional and eager learner with 16 years' experience in travel, hospitality, conservation, education, and project management. He has been leading inbound tours to India, Nepal and Bhutan focusing on wildlife, outdoors and culture. He also worked as a director of the Gerry Martin Project, a conservation organization with the single remit of preventing habitat destruction and implementing positive solutions to human wildlife conflict.

His profession has allowed him the opportunity to master a wide set of skills. He has an affable personality with strong people skills having worked with people across various cultures and ethnicities and age groups. Working in the wilderness has allowed me to learn valuable outdoor skills and hacks, he is very comfortable in remote areas.

Conan speaks English, Hindi, and Tamil with fluency in reading, writing, and speaking. He can also capably speak Kannada, Malayalam, Nepali, French and some Japanese.

When not leading tours or doing conservation work, Conan enjoys fishing, photography, and gardening and when he cannot spend time in the outdoors, he brews beer and try new recipes.



YOUR INDIAN CULTURAL GUIDE FOR THE CULTURAL PROGRAM: SANDEEP SINGH

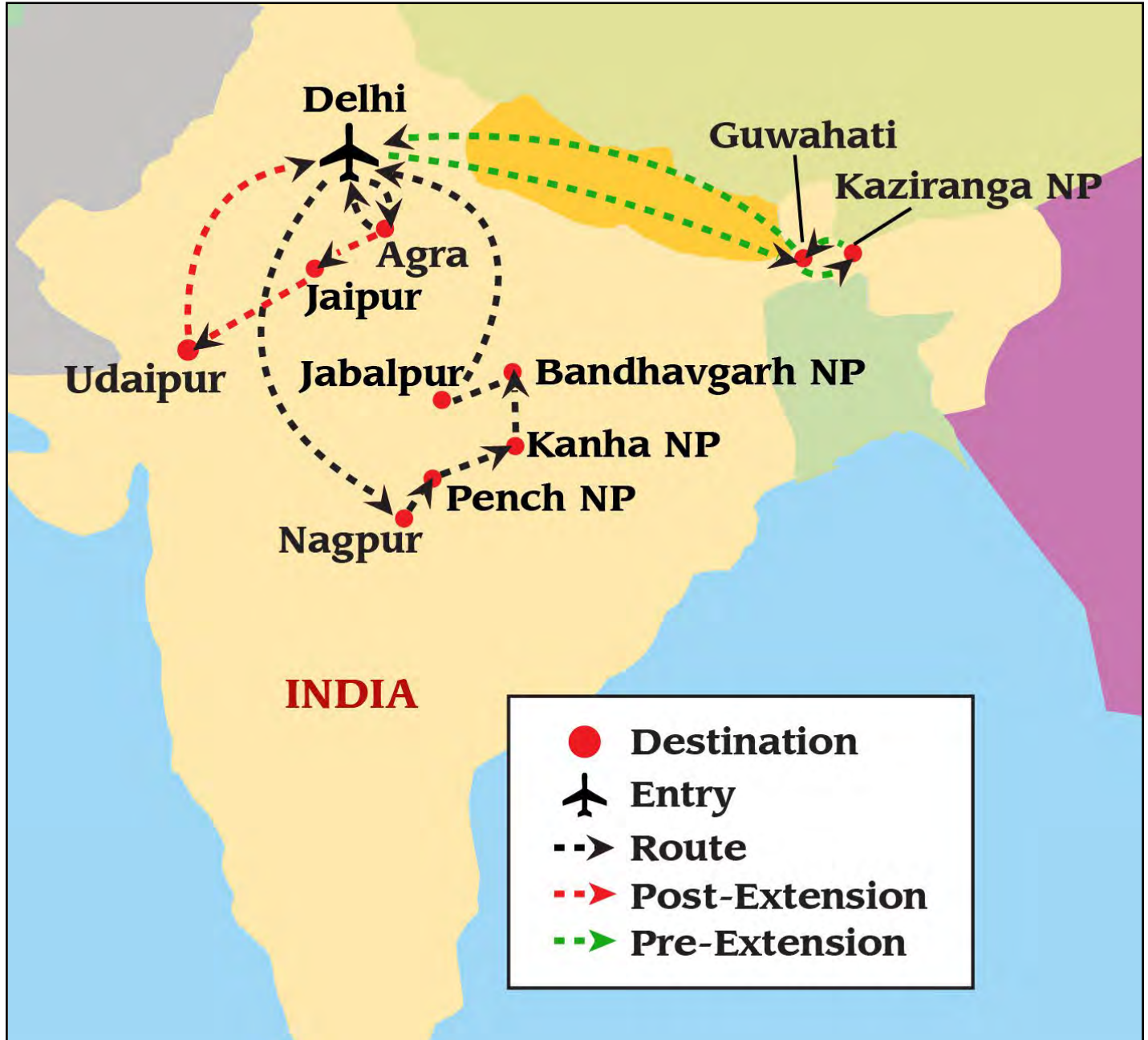
Discipline is the key to success and being a son of a lieutenant Colonel, Sandeep is totally groomed in an environment that motivated him to be disciplined, honest, and loyal towards the duties assigned to him, making him a perfect tour leader.

In his academic career, Sandeep did his master's degree in history from Agra, and is presently pursuing his Ph.D. in medieval History of India. An avid photographer, he has taken a 6-month Course in Professional photography by Cannon Institute of Photography, Delhi.

Sandeep is fluent in English and Spanish and has been leading tours for famous celebrities, scholars and renowned professors from distinguished Universities all over India, Bhutan & Sri Lanka. With his sound knowledge about the cultural heritage, Buddhist Circuit, Hindu Religious Sector & wildlife of India since 2006, Sandeep is the perfect guide to enhance your experience in India.



A MAP OF YOUR JOURNEY TO INDIA



YOUR ITINERARY

DAY 1~ TUESDAY~ JANUARY 21

USA/EN ROUTE

Your journey begins this morning as you board your overnight flight to Delhi. (Meals Aloft)

DAY 2~ WEDNESDAY~ JANUARY 22

DELHI

Arrive in Delhi and transfer to your home for the next two nights, the fabulous Leela Palace Delhi.



The distinctive Leela Palace is located close to historical monuments and the central business district. The architecture is inspired by Lutyens and is both magnificent and elegant, while the art and embellishment is inspired by Mrs. Madhu Nair. The hotel is comprised of 260 luxury oversized suites with every amenity imaginable, such as HD LCD television with a Blu-ray player, iPod dock, broadband wireless high-speed internet, in-room safe, mini bar, tea/coffee maker, 24-hour butler and room service. The hotel also boasts four acclaimed restaurants each specializing in its own cuisine including Indian, Japanese, and French. There are also rooftop temperature-controlled swimming pool, steam and sauna rooms, and a spa available for your relaxation.

Overnight at THE LEELA PALACE NEW DELHI, in Grande deluxe rooms. (Meals Aloft)

<https://www.theleela.com/the-leela-palace-new-delhi>

DAY 3~ THURSDAY~ JANUARY 23

DELHI

Spend today acclimating yourself to your new time zone and exploring one of the most fascinating cities in the world. India's capital and political hub is an ancient city that has something for everyone. Settled seven times over the centuries, the city has grown in a way that reflects its past, while retaining its cosmopolitan flavor. Delhi is India's showcase, be it architecture, religion, shopping, culture - everything is available here waiting to be discovered.



Venture off to Old Delhi for a visit to Jama Masjid, India's largest mosque in India, with a courtyard capable of holding 25,000 devotees. Built in 1644, it was the last in the series of architectural indulgences of Shah Jahan, the Mughal emperor who also built the Taj Mahal and the Red Fort. The highly decorative mosque has three great gateways, four towers, and two 135-foot-high minarets constructed of strips of red sandstone and white marble. Visitors should dress respectfully (no shorts, miniskirts, tank tops, etc.)

Explore the walled city of Old Delhi on a traditional rickshaw ride. On your cycle rickshaw sightseeing tour your senses will come alive as you encounter the many captivating sights and sounds this amazing city has to offer.

This afternoon you will visit the UNESCO World Heritage Monument – The Qutab Minar. This elegant, fluted tower marked the site for the first Muslim Kingdom in North India. Within the site is the famous Quwwat ul Islam Mosque built from the ruins of an ancient temple.

Continue to “New” Delhi and visit Humayun’s Tomb, built in the mid-16th century by the senior wife of the second Mughal emperor—the first significant example of Mughal architecture in India and one of the most beautiful buildings in the city. The



elements of its design are echoed in the later Taj Mahal. A squat building with high arched entrances is topped by a bulbous dome and surrounded by formal gardens containing the red-and-white sandstone and black-and-yellow marble tomb of Humayun's wife and, somewhat surprisingly, the tomb of Humayun's barber. Continue on your drive along the ceremonial avenue, Rajpath, past the imposing India Gate, Parliament House, and the president’s residence.



Tonight’s welcome dinner will offer you an introduction to the astounding richness of Indian cuisine. Overnight at THE LEELA PALACE NEW DELHI. (B,L, Welcome Dinner)

DAYS 4/5~ FRIDAY/SATURDAY~ JANUARY 24/25 DELHI/ NAGPUR/PENCH NATIONAL PARK

Wake up early this morning for your flight to Nagpur (*Indigo Airlines#6E 6554 Delhi/Nagpur 9:35am/11:20 am*) and proceed on a drive to Pench National Park (56 miles, 2-3 hours’ drive). Nestled in the lower southern reaches of the Satpura Hills, it is named after the Pench River, which flows from north to south through the park. The terrain is filled mainly with gentle slopes crisscrossed by streams. Most of these, of course, are seasonal, as is the Pench River, which dries up by April, but several pools locally known as “dohs” are found, serving as water holes for animals. A few perennial springs also exist. Recently, a number of earthen ponds and shallow wells have been developed, leading to well-distributed sources of water all around the reserve.

The landscape supports a mosaic of vegetation ranging from moist, sheltered valleys to open, dry deciduous forest. Over 1,200 species of plants have been recorded in the area, including several rare and endangered plants. As a result, Pench has the highest density of herbivores in India (90.3 animals per sq. km.). The area is especially famous for large groups of gaurs, chital, sambar, nilgai, wild dog, and boar. The key predator is the tiger, followed by leopard, wild dog, and wolf. Other animals include the sloth bear, chousingha, chinkara, barking deer, jackal, fox, palm, and Indian civets, hyena and porcupine. In addition, there are over 285 species of resident and migratory birds, including the Malabar-pied Hornbill, Indian Pitta, Osprey, Gray-headed Fishing Eagle, and White-eyed Buzzard. In winter months, thousands of migratory waterfowl, such as the Brahmini Duck, pochard, Bar-headed Goose, and Coot, visit the park.



Pench Tree Lodge is located in an offbeat spot of Pench National Park. This boutique property offers accommodation in six treehouses and six cottages. The six tree houses are perched on top of the Mahua trees (18 ft above the ground) and supported by stilts. The six Sal wood treehouses dotted around the lodge's private forest provide a unique stay among the clutches of the Mahua trees. The tree houses have en suite bathrooms, large four-poster beds, French windows that open out onto private decks, as well as air conditioning and heating to cater for the cooler months. The six spacious cottages on ground have large French windows that allow for an uninterrupted view of the deciduous forest and grassland and let you observe the multitude of birds, butterflies and the wild animals including wild boars, civets, jungle cats, jackals, and spotted deer.



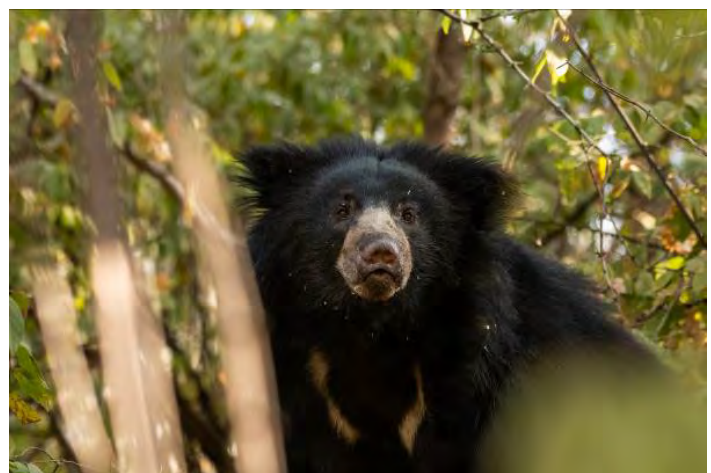
Food is served in the restaurant or outdoors on the pool terrace and consists of international and local cuisines. Much of the produce is grown in the lodge's own organic vegetable garden.

Overnights at PENCH TREE LODGE in tree house/cottage. (B,L,D Daily) <http://www.penchtreelodge.com/>

DAYS 6/7~ SUNDAY/MONDAY~ JANUARY 26/27 PENCH NATIONAL PARK/ KANHA NATIONAL PARK

You now drive to Kanha National Park, with its lush sal and bamboo forests, grassy meadows, and ravines, which provided inspiration to Rudyard Kipling's famous novel, *The Jungle Book*. The largest wildlife sanctuary in Asia, Kanha National Park was one of the first Project Tiger reserves in India. It is, in many ways, Project Tiger's biggest success story, with the tiger population doubling since 1976. Over 740 square miles of habitat make up Kanha—a series of plateaus that stretch across the eastern segment of the Satpura Ranges in Madhya Pradesh. This is the land of the tiger, the leopard, and wolf. Porcupine, spotted deer, jackal, sloth bear, jungle cat, macaque, dhole (wild dog), bison, and a stunning spectrum of birds also inhabit Kanha, making a trip to the sanctuary a must for any wildlife enthusiast. It is a truly thrilling experience, made more so by sightings of the tiger, gaur, or even the tiny mouse deer (muntjac) and the rare barasingha, found only in Kanha. Go birdwatching on a misty winter morning and you're likely to see beauties like the Racquet-tailed Drongo, Crimson-breasted Barbet, Crested hawk Eagle, and Golden Oriole.

Activities over the next two days will mainly consist of jungle safaris, conducted in 4 x 4 vehicles, which are open from all sides to give you a panoramic, unobstructed view of the landscape and every bird or mammal that may just sneak into the tall grasses. You will be able to listen to the sounds of nature, whether it's mating calls, alarm calls, distress calls or just a casual roar. Nature walks can also be arranged as well as visits to the local villages.



Schedules, accommodations and prices are accurate at the time of writing. They are subject to change.

CLASSIC
Escapes

Kanha Earth Lodge is just that -- a place where you can be at one with the Earth. The lodge architecture has been inspired by the stunning Gond tribal villages, which are situated on the fringes of Kanha, making it blend in effortlessly with the forest and rural architecture. The lodge respects the environment, and the simplistic buildings merge well with the landscape. Set in deep jungles in an area untouched by any kind of tourism or development, it offers the discerning guest the guarantee of privacy. The lodge has easy access to the Khatia/Kisli park gate and there is a good opportunity to view a variety of mammals and birds around the lodge itself. It is rustic yet deluxe, built mainly with local stone, logs, baked tiles, tribal artifacts and furnished with fine rustic furniture, sanitary fittings, and cotton upholstery. The lodge has only 12 beautiful, open-fronted bungalows with en suite bathrooms and large open verandahs. Delightful cuisine, a sparkling infinity pool, a nature library cum presentation room and office cum eco shop, round out the amenities.



Overnights at KANHA EARTH LODGE in deluxe bungalow. (B,L,D Daily)

<https://www.kanhaearthlodge.com/>



DAYS 8/9/10~TUESDAY/WEDNESDAY/THURSDAY ~ JANUARY 28/29/30

BANDHAVGARH NATIONAL PARK

Your long but culturally enriching drive takes you to Bandhavgarh, a wildlife retreat where history and nature meet. Set among the Vindhyan Mountain Range in Madhya Pradesh, Bandhavgarh National Park is home to the famous white tigers of Rewa. The prominent ones captured in the park include the legendary white tiger called Mohan, who supposedly fathered several offspring found in zoos the world over. Bandhavgarh's history goes back 2,000 years, and the earliest signs of habitation can be seen in the caves excavated from the cliffs to the north of the fort. Brahmi inscription here dates back to the 1st century B.C. and Bandhavgarh was a hunting reserve of Rewa's royal family in more recent times, where an alarming number of tigers were hunted down in pre-independence India. Bandhavgarh was declared a national park in 1968 and the tigers are now protected. The landscape is a unique mixture of steep and



rocky hills, with flat tops and level grasslands in the valleys below. The vegetation found within the park is moist deciduous forest with fine sal trees and stretches of bamboo. Today, the sanctuary is one of the best places to witness the tiger in action and has the highest-density tiger population of any wildlife park in the country. Other wild animals in Bandhavgarh include nilgai, chital, chinkara, gaur, sloth bear, and wild boar, along with 250 species of birds.

Like Kanha, jungle safaris are conducted by jeep. It is advisable to go on every possible safari, because a tiger sighting is never guaranteed, and no sighting is ever the same.

Your home for the next three nights is situated in Rancho village, only a stone's throw from the coveted wildlife reserve. Kings Lodge is set among 35 acres of sal forest, and it has ten cottage rooms and eight stilt rooms. Each stilt unit has a wooden lofted balcony. All rooms are well appointed and decorated with tribal art, giving the lodge a jungle ambience. The hotel also has a library, infinity swimming pool, and watchtower as well as a massage deck. The lodge has been built to blend with the surrounding landscape and has eco-sensitive policies. As darkness falls, in the peace and tranquility of the night and under the wonderful canopy of stars, one can hear various animals call—including the alarm call of the deer, the howling of jackals, or the occasional roar of a tiger.

Overnights at KINGS LODGE, in deluxe cottage. (B,L,D Daily)
<https://www.kingslodge.in/>



DAY 11~ FRIDAY~ JANUARY 31

JABALPUR/DELHI

Your drive this morning takes you to Jabalpur, where you board your flight to Delhi (*Indigo Airline #6E 6073*Jabalpur/Delhi 3:45 pm-5:15pm). Here, check into your room at Leela Palace. The balance of your day is at leisure.

Overnight at the LEELA PALACE (B,L,D)

<https://www.theleela.com/the-leela-palace-new-delhi>

DAY 12~SATURDAY~ FEBRUARY 1

DELHI/AGRA

Begin your drive this morning to Agra (*approximately 3 ½ hours*).

Perhaps no other historical monument has evoked as much awareness and admiration from tourists and travelers alike as the magnificent Taj Mahal, considered the ultimate requiem of love from a great Mughal Emperor to his beloved wife. So overwhelming is the exquisite beauty and presence of this marble mausoleum that centuries later today, even the very land where it has been located has been immortalized as the City of the Taj.

Although the heritage of Agra is linked with the Mughal Dynasty, numerous other rulers also contributed to the rich past of this city. Modern Agra was founded by Sikandar Lodhi (Lodhi Dynasty) in the 16th century. Babur (founder of the Mughal Dynasty) also stayed for some time in Agra and introduced the concept of square, Persian-styled gardens here. Emperor Akbar, his grandson, built the Agra Fort and the city of Fatehpur Sikri in gratitude for an heir after his wife bore him a son. Agra came to its own when Shahjahan ascended to the throne of the Empire. He marked the zenith of Mughal architecture when he built the Taj Mahal in memory of his beloved wife, whom he affectionately named Mumtaz Mahal (Jewel of the Palace). In his later years, Shahjahan shifted his capital to the new city of Shahjahanabad in Delhi and ruled from there. Shahjahan was dethroned in 1658 by his son, Aurangzeb, who imprisoned him in the Agra Fort. Aurangzeb shifted the capital back to Agra until his death. After the death of Aurangzeb, the Mughal Empire would not again touch its peak and many regional kingdoms emerged. The post-Mughal era of Agra saw the rule of the Jats, Marathas, and finally the British took over the city.

In the late afternoon, visit the fabled Taj Mahal and enjoy the monument as the sun sets.

Gloriously stretching over 35 acres of vibrant courtyards and situated in the heart of the city, the ITC Mughal offers 285 luxuriously furnished rooms and suites. All guest rooms are decorated with a touch of old-world splendor, and many offer a view of the Taj Mahal, located just over a mile away. You can dine in any of the on-site restaurants, serving authentic flavors of the North West Frontier, Continental, or gourmet dishes.

Overnight at the ITC MUGHAL in the Mughal Chamber (B,L,D)

<https://www.itshotels.com/in/en/itcmughal-agra>



DAY 13~SUNDAY~ FEBRUARY 2
AGRA



This morning, visit the Wildlife SOS Bear Sanctuary and the Elephant Rescue Center. To date they have rescued more than 520 bears and bear cubs from the bear dancers, poachers & traders. You will also meet the elephants of the nearby Conservation and Care Center. This project of Wildlife SOS, created in 2010 in collaboration with the Uttar Pradesh Forest Department, works to rehabilitate severely abused captive elephants in distress. The elephant centre houses elephants who are finally enjoying a lifetime of love, after being rescued from harsh work environments. Wildlife SOS is campaigning against the capture, training, and use of elephants for tourism, temple festivals, begging, performing on streets, or the logging industry.

In the afternoon, visit the Agra Fort, a powerful fortress founded in 1565 by the emperor Akbar (1556-1605) on the right bank of the Yamuna; it is situated today on the northwest extremity of the Shah Jahan. It doesn't take much for the wandering eye to discover that there's more to Agra than just the fabled Taj Mahal. The city is a virtual gateway to a world of discovery, a freeze-frame from a resplendent era that's long since gone. Spend the rest of your morning discovering this imposing city and its fabled past as you explore the monuments, the majesty of the buildings, and the exquisite arts and crafts... all cherished as priceless legacies of a nostalgic past.

Enjoy a shopping tour before you are transferred to Mehtab Bagh Gardens (*Moonlight Gardens of Agra*) to view the fabled Taj Mahal from afar. The views of the Taj Mahal from here are incredible. As it sits beside the Yamuna River, this gorgeous historic pleasure garden is a great way to see the Taj Mahal without all the crowd. Overnight at the ITC MUGHAL. (B,L,D)



DAY 14~MONDAY~ FEBRUARY 3
AGRA/DELHI

Early this morning, enjoy a sunrise visit to Taj Mahal, if you wish. This visit, unlike the one before, will allow you a glimpse of this monument with the changing backdrop of the morning sky. Watch the monument go from a dull gray to a shimmering white during your visit. Return to hotel for a leisurely breakfast.

Schedules, accommodations and prices are accurate at the time of writing. They are subject to change.



Bid farewell to Agra after breakfast as you drive back to Delhi. Here, check into your day room at JW MARRIOTT HOTEL AEROCITY. Enjoy dinner, and depending on your flight time, you have a bit of leisure time before you are transferred to the airport for your flight home.

JW Marriott Hotel Aerocity is a five-star spacious and modern in design hotel, located in the heart of New Delhi, offering personalized service with four restaurants and a bar and lounge for guest enjoyment. All of the 511 rooms are air-conditioned and equipped with a flat-screen satellite TV, electric kettle, and mini-bar. The private bathroom comes with a jetted tub and separate shower. Complimentary Wi-Fi is provided in all areas of the hotel.

Overnight at the JW MARRIOTT HOTEL AEROCITY NEW DELHI, in deluxe rooms (B,L,D)

<https://www.marriott.com/en-us/hotels/delap-jw-marriott-hotel-new-delhi-aerocity/overview/>



DAY 15~ TUESDAY~ FEBRUARY 4

USA

Today finds you back home with incredible memories of India's wonderful wildlife, ancient ruins, and incredible people. (Meals Aloft)



OPTIONAL POST-EXTENSION TO JAIPUR & UDAIPUR

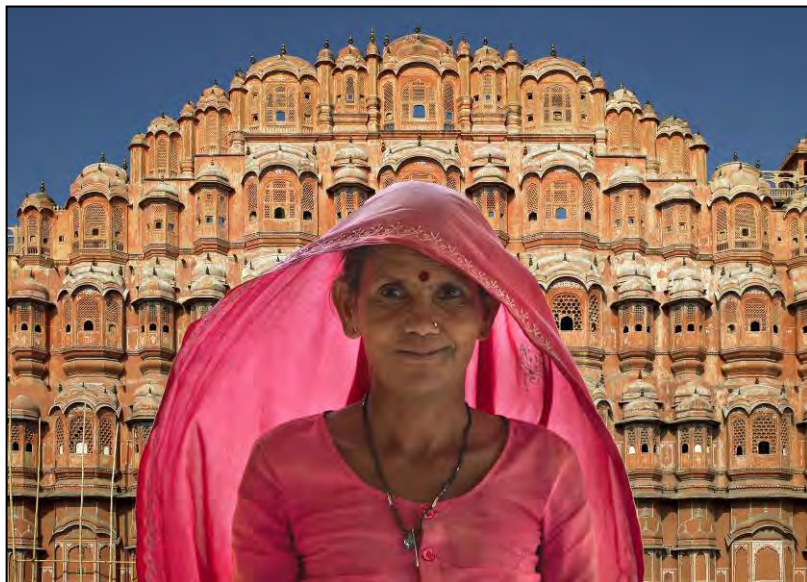
DAY 14~MONDAY~ FEBRUARY 3

AGRA/JAIPUR



Leave Agra behind and drive for about an hour to the magnificent ghost city of Fatehpur Sikri, the short-lived capital of the Mughal Empire between 1571 and 1585 during the reign of Emperor Akbar. Although brilliant and unusual from an architectural point of view, Akbar's city was erected in an area that suffered from water shortages and it was abandoned shortly after Akbar's death. The well-preserved palace and still-used mosque are the main points of interest, but you can wander around the ruins that are scattered behind the mosque.

After lunch, resume your drive for another four hours to Jaipur, the administrative and commercial capital of what was known as Rajputana. Begun in 1727 and completed in just eight years, Jaipur was the first city in India to enjoy rigorous town planning according to the principles laid down in "Shilpa Shastra," an ancient Indian article on architecture. The city is protected by high walls, with wide, straight avenues that divide it into nine sectors (apparently reflecting the nine divisions of the universe, resembling the Indian horoscope), each named after the commodity and caste that lived and practiced their specific skills here—the order and space was at the time a total revolution in Indian cities.



Upon arrival, you are escorted to your stunning hotel where you drop off your bags and get ready to discover Jaipur, known as the Pink City, a rather idealized description of the terra-cotta-colored lime plaster that coats the old part of the city's walls, buildings, and temples. The reasons for painting the town pink are unknown, but various theories have been suggested, from using pink to cut down glare, to the city's founder, Jai Singh II's, apparent devotion to Lord Shiva (whose favorite color is reputedly terra-cotta). Others believe Singh wanted to imitate the color of the sandstone used in the forts and palaces of his Mughal emperor

Schedules, accommodations and prices are accurate at the time of writing. They are subject to change.



friends. The most popular reason is that pink is the traditional color of hospitality, and the city was freshly painted and paved with pink gravel to warmly welcome Edward VII for his visit here in 1876. The city is painted pink once every 10 years by the Municipal Corporation, and in 2000 the painting was timed for a state visit, this time by former U.S. president Bill Clinton.

Your late afternoon tour of Jaipur will take you through the pink city and introduce you to its colorful culture via rickshaw. You'll arrive at a Haveli deep inside the city, where you will be welcomed by the family and learn their story. You will also enjoy a cooking demonstration (on hand experience is also welcomed) and a fabulous dinner afterwards. It's a great opportunity to learn about the history and culture of this fascinating city from its inhabitants.

Experience the magic of the Pink City in a fabled palace hotel that dazzles and delights. Nestled against the Aravalli Range as the backdrop, this uber-luxurious hotel will be your home for three nights. Boasting over eight acres of landscaped gardens, the splendor of the Rajputana heritage is on display with mirrors, Shekhawati paintings and silver foiled domes as décor. Your palace room has hues of coral and exudes luxury. Contemporary in design, the rooms have hand-tufted carpets and marble floors with inlay work. The rooms are air-conditioned and feature a comfortable seating area, a 49-inch LED TV, tea and coffee making facilities, a mini-bar, and a well-equipped bathroom. Dine in one of the four venues and feast on mouth-watering cuisine. Pool, fitness center and much more, round out this fabulous Palace.

Overnight at the **LEELA PALACE JAIPUR** in grand villa with terrace. (B,L,D)
<https://www.theleela.com/the-leela-palace-jaipur>

DAY 15~ TUESDAY~ FEBRUARY 4 JAIPUR

This morning, visit one of the major attractions at Jaipur, the Amber Fort. The breathtakingly beautiful complex of the Amber Fort consists of palaces, halls, pavilions, gardens, and temples. It is astounding that it took more than two centuries for its construction. The elegance exuded by the fort is simply awesome.





Continue to the Hawa Mahal, or the Palace of Winds, located on the main street of the old city: the five-story building is a pink splendor with carved trelliswork. This structure was meant to be a window for the royal ladies to view the activities on the street, including daily life and processions. You will relish each moment of the royal retreat.

This afternoon, visit the former residence of the royal family, the City Palace. This charming palace reveals a combination of the Rajasthan and Mughal styles of architecture.

One of the other major attractions is the Armory Museum, housing an impressive array of weaponry. Visit the outdoor observatory built by the astronomer/ruler of Jaipur, Jantar Mantar, which is the largest stone and marble observatory in the world with 17 large instruments, many of them still in working condition.

Tonight, enjoy a fabulous meal at perhaps one of the most outstanding restaurants in India, the incredible Indian restaurant in the Leela for a truly delightful experience.

Overnight at the LEELA PALACE JAIPUR. (B,L,D)

DAY 16~ WEDNESDAY~ FEBRUARY 5

JAIPUR ~JHALANA LEOPARD PARK

This morning, enjoy a jeep safari in Jhalana Leopard Safari Park. It is home to 30-35 leopards out of which 6-7 leopards have their territory in the tourism area of park. Situated right in the heart of Jaipur city, closer to the Airport, Jhalana slowly is becoming a favourite destination to spot leopards in the wild. This otherwise shy cat is the apex predator here and does not have much competition for survival which makes them confident and ensures better sightings.

Jhalana has always been home to leopards and other smaller fauna, including spotted deer, blue bull, wild boar and loads of resident as well as migratory birds. Safari at Jhalana has been operational since December 2016 and as of now two safari routes are open for visitors.

Your afternoon is at leisure. We suggest you check out the bazaars, cuisine, and crafts of old Jaipur. Be prepared to be dazzled and get your bargaining skills honed, as no other place in India can match the sheer number of beautiful crafts you can purchase. People watching is equally compelling with typical dress of



Schedules, accommodations and prices are accurate at the time of writing. They are subject to change.



Rajasthan on display – men in their turbans, women with nose ornaments and bangles. Spend the afternoon browsing and shopping for souvenirs such as handmade jewelry, handwoven carpets, traditional Indian art, and much more. Or, if relaxing is what you prefer, your luxury hotel has plenty to keep you busy.
Overnight at the LEELA PALACE JAIPUR. (B,L,D)

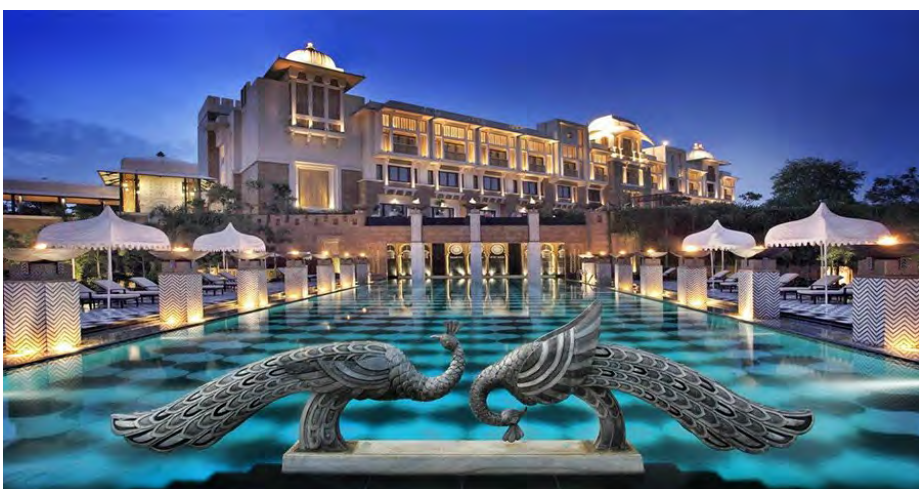
DAY 17~ THURSDAY~ FEBRUARY 6
JAIPUR/UDAIPUR

Board your flight to the lake city of Udaipur (*Flight 6E#7218 9:20 am: 10:15 am*), founded in 1568 by Maharana Udai Singh II, which carries a rich history.



In the evening, enjoy a boat ride on Lake Pichola, a large, still body of water, perhaps two miles across at the widest. The lake is famous for the Lake Palace, built on a small island a short distance from the city palace, which rises grandly from the lakeshore.

The Leela Palace Udaipur is a jewel on the banks of the majestic Lake Pichola offering stunning views of the lake, City Palace, and the Aravalli Mountains. The hotel exemplifies Rajasthani palace architecture and evokes the grandeur of Udaipur's rich and royal heritage. From stately architecture to lavish guestrooms and world-class service, the hotel showcases the very best of Indian culture and hospitality in the most luxurious of settings. Overnights at the LEELA PALACE, in Grande Heritage Lake View Rooms (B,L,D) <https://www.theleela.com/the-leela-palace-udaipur>



DAY 18~ FRIDAY~ FEBRUARY 7
UDAIPUR

Today you visit the City Palace, a majestic architectural marvel situated on a hill towering over the lake. The grounds include chiseled walls, a conglomeration of courtyards, pavilions, terraces, corridors, rooms and hanging gardens. It also houses the Dilkhush Mahal, the Sheesh Mahal, which is studded with glittering Belgium mirrors, the Moti Mahal, and the

palace of Lord Krishna. Continue on to the Jagdish Temple which was built in 1651 and is dedicated to Lord Vishnu, "The Preserver." In addition, you will also visit the lovely gardens and fountains of the Sahelion Ki Bari.

In the afternoon enjoy a walking tour of Udaipur, starting from the 17th century Jagdish temple, through the old town, and past the clock tower. Along the way you will have the opportunity to visit the various workshops and the jewelry store and watch the goldsmiths at work. Walk through the lanes of a bygone era, lined with quaint shops selling shoes, scarves, leather items, books etc.



Visit the Bamboo basket weaving artists at work and the vegetables and spices market. Overnights at the LEELA PALACE. (B,L,D)

DAY 19~ SATURDAY~ FEBRUARY 8

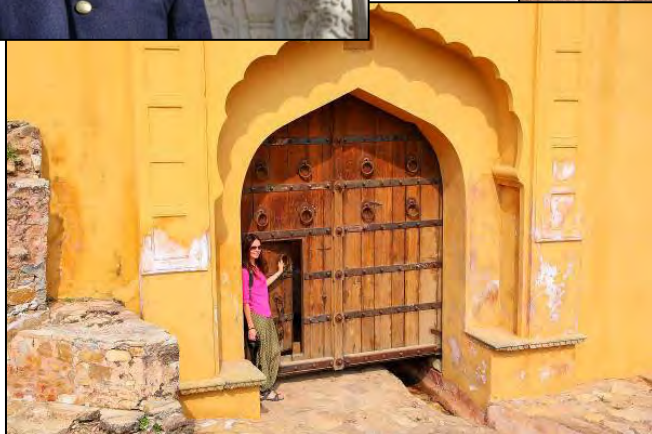
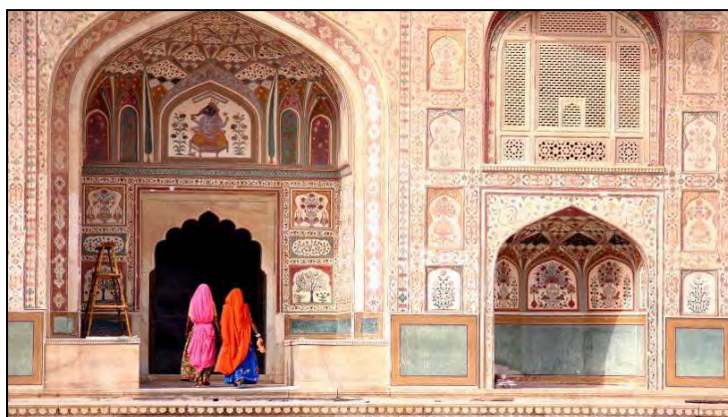
UDAIPUR/DELHI/EN ROUTE

Bid farewell to Udaipur today as you fly back to Delhi. Here, check in to your day room at JW MARRIOTT HOTEL AEROCITY. Enjoy dinner, and depending on your flight time, you have a bit of leisure time before you are transferred to the airport for your flight home. (B,L,D)

DAY 20~ SUNDAY~ FEBRUARY 9

USA

Arrive today back home with incredible memories of India's wonderful wildlife, ancient ruins, and incredible people. (Meals Aloft)



OPTIONAL PRE-EXTENSION TO KAZIRANGA NATIONAL PARK



DAY 1~FRIDAY~JANUARY 17

USA/EN ROUTE

Your journey begins this morning as you board your overnight flight to Delhi.
(Meals Aloft)

DAY 2~ SATURDAY~ JANUARY 18

DELHI

Arrive in Delhi and transfer to your home for the next two nights, the fabulous Leela Palace Delhi.

Overnight at THE LEELA PALACE NEW DELHI, in *Grande deluxe rooms*. (No Meals)

DAY 3~ FRIDAY~ JANUARY 19

DELHI

Spend today acclimating yourself to your new time zone and exploring one of the most fascinating cities in the world. India's capital and political hub is an ancient city that has something for everyone. Settled seven times over the centuries, the city has grown in a way that reflects its past, while retaining its cosmopolitan flavor. Delhi is India's showcase, be it architecture, religion, shopping, culture – everything is available here waiting to be discovered.



Venture off to Old Delhi for a visit to Jama Masjid, India's largest mosque in India, with a courtyard capable of holding 25,000 devotees. Built in 1644, it was the last in the series of architectural indulgences of Shah Jahan, the Mughal emperor who also built the Taj Mahal and the Red Fort. The highly decorative mosque has three great gateways, four towers, and two 135-foot-high minarets constructed of strips of red sandstone and white marble. Visitors should dress respectfully (no shorts, miniskirts, tank tops, etc.). Next, visit the Red Fort, once the most opulent fort and palace of the Mughal Empire. The main entrance to the fort is the Lahore Gate, named so for facing toward Lahore in Pakistan. Delhi Gate is similar to Lahore but grander in design, and the gate was used by the emperor every Friday for ceremonial processions to the Jama Masjid.



Explore the walled city of Old Delhi on a traditional rickshaw ride. On your cycle rickshaw sightseeing tour your senses will come alive as you encounter the many captivating sights and sounds this amazing city has to offer.

This afternoon you will visit the UNESCO World Heritage Monument – The Qutab Minar. This elegant, fluted tower marked the site for the first Muslim Kingdom in North India. Within the site is the famous Quwwat ul Islam Mosque built from the ruins of an ancient temple.

Continue to “New” Delhi and visit Humayun's Tomb, built in the mid-16th century by the senior wife of the second Mughal emperor—the first significant example of Mughal architecture in India and one of the most beautiful buildings in the city. The elements of its design are echoed in the later Taj Mahal. A squat building with high arched entrances is topped by a bulbous dome and surrounded by formal gardens containing the red-and-white sandstone and black-and-yellow marble tomb of Humayun's wife and, somewhat surprisingly, the tomb of Humayun's barber. Continue on your drive along the ceremonial avenue, Rajpath, past the imposing India Gate, Parliament House, and the president's residence.



Tonight's welcome dinner will offer you an introduction to the astounding richness of Indian cuisine.

Overnight at THE LEELA PALACE NEW DELHI in a premier room. (B,L, Welcome Dinner)



DAYS 4/5/6~MONDAY/TUESDAY/WEDNESDAY~ JANUARY 20/21/22 DELHI/GUWAHATI

Transfer back to the airport for your flight to Guwahati (UK#741: 9:40a-12:05pm), where you will have about a four to five-hours' drive to the land of the great Indian one-horned rhino, more than two tons of frightening muscle and tank-like belligerence. With its armor-plating hide and its 24-inch-long horn – which really isn't a horn, but compressed hair – the Indian rhino once ruled the wetlands of north-east India. Hunted mercilessly, it was on the brink of extinction when conservationists finally awoke to its plight. The result, and a successful one at that, is Kaziranga National Park.

Stretching over an area of 166-sq-mi on the south bank of the Brahmaputra River, Kaziranga is one of the last refuges of the Greater one horned rhino. A vast stretch of course, tall elephant grass, marshland, and dense tropical forests, it has managed to survive the onslaught of poachers, urbanization, and burgeoning human populations. Kaziranga's birth is mostly thanks to one, Lady Curzon, wife of the then British Viceroy

to India, who visited Kaziranga in the winter of 1904. Unfortunately, contrary to her expectations of seeing the great Rhino itself, she could only find a few of its hoof marks. Struck by its perilous state she impressed upon her husband Lord Curzon, the need to save the Rhino. Today 100 years later, in what can be called this Century's Greatest Conservation Success Story, the Rhino population is the single largest in the world! This story sends a loud and clear message to the entire world – that with strong public and political will and collective action of conservation communities, there is hope yet for other critically endangered species across the globe.

The vast open country makes the park very accessible and wildlife viewing enjoyable. You will spend your days doing wildlife viewing either by elephant-back or jeep. Leave in the early hours of the morning for elephant-back-rides. The authorized and trained Mahouts will guide you through the park in hopes of seeing wild elephant herds roaming around or Indian rhinos walking past. Kaziranga is also home to a vast number of animals including elephant, tiger, leopard, jungle cat, hog badger, capped langur, hoolock gibbon, jackal, porcupine, python, buffalo, Indian bison, swamp deer, sambhars, and hog deer. The park also boasts a decent avian population, which increases considerably in the winter, when migrating birds visit the park.



Diphlu River Lodge opened in January 2008, providing much-needed top-class accommodation at this World Heritage Site. The position of the lodge is second to none – only the boundary river separates its extensive grounds from the National Park itself, and the jungle views are exceptional. Built in thatch and bamboo, on stilts, the tranquil ambiance of the lodge is suitable for animal viewing in the early morning or night when only sparse lantern lights are allowed outside. From the individual tribal huts on stilts, guests gently walk and rock on the bamboo bridges over the lush green paddy-fields to congregate in the lounge for food and drink that overlooks the Park across the river. The lodge has four individual cottages and four semi-detached cottages, made of bamboo and thatch, built on stilts above the ground.



All cottages sleep two and have been beautifully designed to make full use of local materials and artifacts and blend in with the stunning natural surroundings. All are well-appointed and charmingly furnished with individual interiors. Each has a seating area with comfortable cane furniture, a writing desk, mini-bar, safe, small fridge, and tea & coffee machine as well as top-quality beds and mattresses.

Overnights at the DIPHLU RIVER LODGE. (B,L,D Daily) <https://www.diphfluriverlodge.com/>

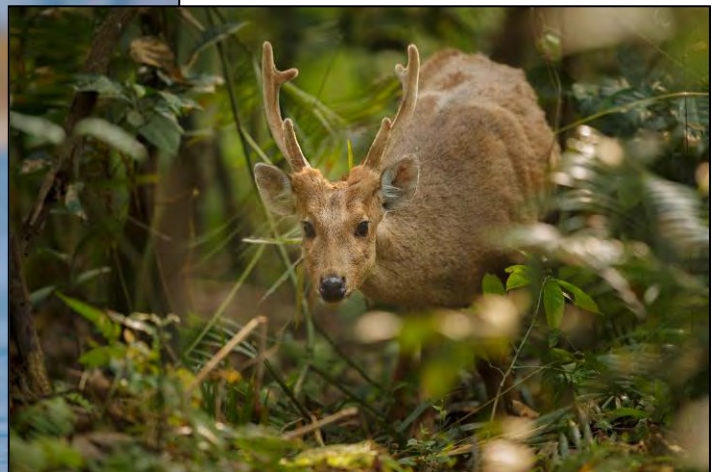
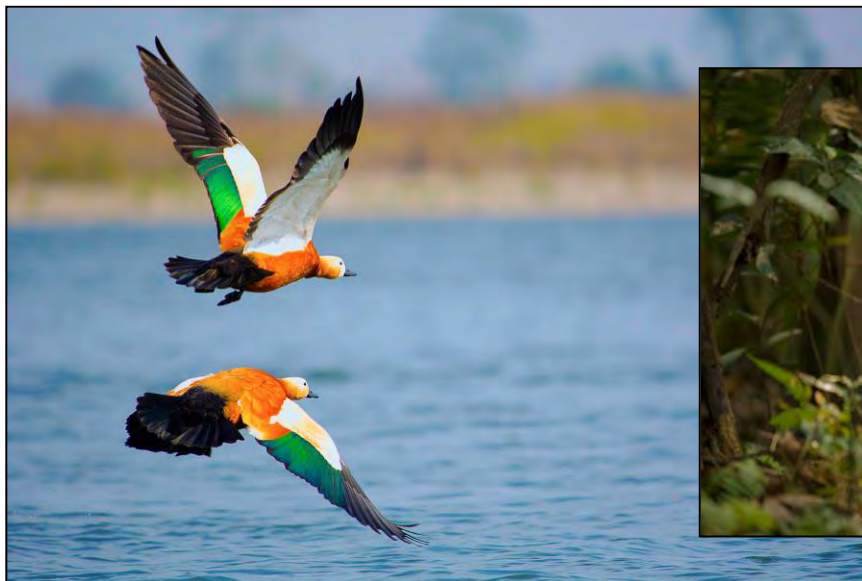


Schedules, accommodations and prices are accurate at the time of writing. They are subject to change.

DAY 8~THURSDAY~ JANUARY 23

GUWAHATI/DELHI

Drive back to Guwahati for your afternoon flight to Delhi (UK# 742: 2:40pm-15:35 pm). Here you are transferred back to the Leela Palace New Delhi where you will join the rest of the group and continue your trip. (B,L,D)



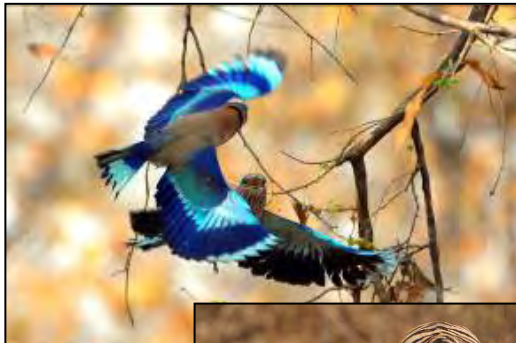
INCLUSIONS

- Internal flights between Delhi/Nagpur and Jabalpur/Delhi on the main program.
- Flight Delhi/Guwahati/Delhi on the pre-extension.
- Flight between Jaipur/Udaipur and Udaipur/Delhi on the post-extension.
- Superior accommodations throughout as indicated or similar.
- Jeff Sailer will accompany the group with a minimum of 10 travelers on both the main program and the extensions.
- Naturalist guide for the main trip and pre-extension; cultural guide for the program from Agra onwards.
- Breakfast daily, all meals in National Parks, and other meals as specified in the itinerary.
- Sightseeing in National Parks, and points of interest as indicated in private coaches. Game-viewing in private 4WD vehicles.
- All applicable hotel and lodge taxes and gratuities for baggage handling.
- All entry fees.
- Complimentary baggage tags and water bottle.
- Complimentary emergency evacuation insurance.

EXCLUSIONS

- Roundtrip air transportation from the USA. If you require assistance with air arrangements, contact Classic Escapes.
- Passport and visa fees and service charges for obtaining visas. Currently, visas are required for entry into India.
- Excess baggage charges levied by airlines.
- Gratuities to drivers, local guides, naturalist and cultural guides, and other conveyance attendants. *Gratuities should only be given as a reward for exceptional service and is at your discretion. We estimate \$15 per person/per day for the naturalist and specialist guide. \$10 per person/per day for the driver; \$5 per game run for the driver in the parks, and \$3 for the tracker. \$10 per person/per day for the lodge/camp staff. \$5 per person for each arrival and departure transfer from the airport/ hotel. These are daily per service estimates and an exact tipping chart will be detailed on your final itinerary.*
- Meals and beverages, other than specified.
- Laundry and other items of a personal nature.
- Personal and baggage insurance.
- Cost for anything not specifically mentioned in the listing above.

PLEASE NOTE THE ITINERARY SEQUENCE IS CORRECT AT THE TIME OF WRITING BUT IS SUBJECT TO CHANGE.



THINGS YOU NEED TO KNOW ABOUT INDIA

Participants:

- Must be able to climb in and out of safari 4x4 vehicles unassisted. They should also be able to tolerate riding on uneven, bumpy dirt roads for long periods of time (6-9 hours maximum), as well as some off-road experiences when opportunities allow. Participants should be able to stand and/or walk moderate distances at an easy pace for up to a few hours at a time when visiting villages, towns, or other sites. Some, if not most, of this walking may be on uneven ground or uphill.
- Driving in India is chaotic and unlike the orderly driving experienced in the United States. Your drivers are experts in navigating the roads with all the conditions that are prevalent and travelers should feel safe in the knowledge that your driver's number one priority is to get you to your destination safely and as efficiently as possible.

General:

- True adventure in travel can sometimes be accompanied by unexpected changes in conditions, itineraries and occasionally your accommodations. Participants should travel with a spirit of adventure and flexibility.
- Remember to pack your patience and sense of humor! Be willing to look past self-imposed ideals of Western amenities and do not compare these new experiences with your life back home. Travel often includes visiting destinations with modest infrastructures and a bending definition of comfort.
- That being said some locations are nestled in absolute luxury where pampering is the norm. Participants should generally be in good health and prepared to travel in locations without medical facilities.

Air Schedules

The cost of your program does not include international airfare. If you require assistance, please contact Classic Escapes at 718-280-5002 and we will happily provide air quotes to you. You may make your own international air arrangements, but please ensure you arrive/depart on the correct dates. Contact your Journey Manager at Classic Escapes to verify the dates to ensure there are no errors. **The start and end city for this program is Delhi, India.**

Upon registration, you must provide your full legal name as it appears on your passport. In the event an airline ticket is issued with incorrect information you have provided, you will be responsible for charges associated with reissuing the ticket.



YOUR JOURNEY AT A GLANCE

INCLUDING: DELHI, PENCH NATIONAL PARK, KANHA NATIONAL PARK, BANDHAVGARH NATIONAL PARK & AGRA; POST-EXTENSION TO JAIPUR & UDAIPUR; PRE-EXTENSION TO KAZIRANGA NATIONAL PARK.

SPONSORING ORGANIZATION: TOLEDO ZOO

ESCORTED BY: JEFF SAILER, PRESIDENT & CEO OF THE TOLEDO ZOO & AQUARIUM

DATES: JANUARY 21 TO FEBRUARY 4, 2025

COST: PER PERSON, DOUBLE OCCUPANCY	MAIN TOUR BASED ON 10 TRAVELERS	POST-EXTENSION TO JAIPUR & UDAIPUR BASED ON 10 TRAVELERS	PRE-EXTENSION TO KAZIRANGA BASED ON 10 TRAVELERS
LAND COST & INTERNAL FLIGHTS	\$10,995 PER PERSON	\$6,495 PER PERSON	\$4,595 PER PERSON
SINGLE ROOM SUPPLEMENT*	\$3,495 PER PERSON, ADDITIONAL	\$2,995 PER PERSON, ADDITIONAL	\$1,295 PER PERSON, ADDITIONAL

**SINGLE SUPPLEMENT: RATE IS VALID FOR FIRST TWO SINGLE ROOMS BOOKED. IF MORE THAN TWO SINGLE ROOMS, ADDITIONAL SUPPLEMENT MAY APPLY. SINGLES ARE ASSIGNED ON A FIRST COME/FIRST SERVE BASIS.*

INTERNATIONAL AIR ARRANGEMENTS: The cost of your program does not include international airfare. If you require assistance, please contact Classic Escapes at 718-280-5002 and we will happily provide air quotes to you. You may make your own international air arrangements, but please ensure you arrive/depart on the correct dates. Contact your Journey Manager at Classic Escapes to verify the dates to ensure there are no errors. **The start and end city for this program is Delhi, India.**



CONDITIONS OF TRAVEL:

The purchase of your travel booking constitutes a contractual agreement between the traveler(s), customer(s), and/or purchaser(s) (collectively as "You" and "Traveler"), and Classic Escapes ("Classic Escapes", "We", "Us") pursuant to the following terms and conditions ("Terms", "Agreement"):

REGISTRATION & PAYMENTS

HOW TO BOOK: Fill out and sign the enclosed reservation form and send it, along with the relevant deposit as shown below, to: CLASSIC ESCAPES, 191 W Poplar Street, Floral Park, NY 11001 Upon receipt of your signed reservation form and deposit, we will, subject to availability, reserve your spot on the tour. You may consider your booking confirmed when you receive a confirmation notice and invoice from us.

DEPOSIT AND FINAL PAYMENT: You will be required to pay the following per person deposits when booking. Those amounts are:

- \$2,200 for trip
- \$1,300 for the post-extension to Jaipur and Udaipur
- \$1,000 for the pre-extension to Kaziranga National Park

All deposits are subject to the Cancellation policy herein. Final payment is required no less than 95 days prior to departure (**October 18, 2024**) unless otherwise stated. Some fares or services must be paid in full at the time of booking. Deposits and final payments may be paid by check, wire transfer or credit card (American Express, Visa, MasterCard, or Discover). Conditioned on receipt of final payment in full, all final documents and air tickets will be sent to you approximately two weeks prior to departure.

CREDIT CARD TRANSACTIONS: If for any reason, any travel service provider is unable to provide the services for which you have contracted, your remedy lies against the provider, and not against Classic Escapes, and in the event that payment has been made to Classic Escapes by credit card, you agree that you will not seek to chargeback your payment to Classic Escapes. If the credit card is passed through to the travel service provider and you seek to chargeback your payment from the provider, you agree to be held liable and indemnify Classic Escapes against this chargeback from the provider, including without limitation any air debit memos charged to Classic Escapes. If the credit card is declined, you guarantee that you will settle any amounts owing to Classic Escapes via money order or cash immediately. Except in cases of fraud, you agree not to file any dispute with your bank or credit card company to avoid or violate any booking terms and conditions of Classic Escapes or its suppliers, including cancellations or changes of itinerary or arrangements for reasons beyond the control of Classic Escapes or its suppliers. If you attempt to chargeback, reverse, or recollect a previously authorized trip payment, Classic Escapes reserves the right to collect all additional costs, fees and expenses associated with such chargeback, reversal, or recollection, including, without limitation, attorney fees.

IMPORTANT CONDITIONS: Prices are subject to increase prior to the time you make full payment. Prices are not subject to increase after you make full payment, except for charges resulting from increases in government-imposed taxes or fees. By signing the reservation form, you expressly acknowledge your acceptance of these conditions (i.e., increases before full payment and increases attributable to government-imposed taxes or fees after full payment will be your responsibility) applicable to your purchase.

RATES: Rates are based on the minimum number of guests outlined in this document, plus airfare costs, currency exchange rates and other factors and are subject to change. Though it is rare for Classic Escapes to make a price adjustment after promotion of an itinerary, we do reserve the right to assess a surcharge if the minimum is not met, or if increases are forced upon us by airlines or other partners or because of changes in currency exchange rates.

ADDITIONAL FEES: Additional taxes and surcharges that cannot be pre-collected may be charged locally. Cost of passport and visa fees and service charges for obtaining visa fees; excess baggage charges levied by airlines; laundry and other items of a personal nature; optional travel insurance policy(s); or any other costs incurred that cannot be pre-collected are NOT included and are the sole responsibility of the Traveler.

SINGLE SUPPLEMENT: The quoted rate is valid for the first two single rooms booked and on a first-come, first-served basis. If more than two single rooms are needed, an additional supplement may apply. Single accommodations are not guaranteed but will be provided at additional cost if available (see 'Your Journey at a Glance' section for the cost.) The single room supplement pays for privacy, not better accommodations. For passengers who are traveling alone and wish to share a room with another tour member, we will do our best to provide a roommate. However, if this is not possible, you will be required to pay the single room supplement prior to your departure from the USA.

GRATUITIES, ENTRANCE FEES & TAXES: Gratuities for baggage handling, service charges and taxes imposed by hotels, and entrance fees to all points of interest as outlined in the itinerary are included in the final cost. U.S. and foreign airport taxes are included in air costs. Tips to drivers and specialist guide(s) are **not** included and are the sole responsibility of the Traveler.

CANCELLATIONS, DEVIATIONS & CHANGES

TRAVEL INSURANCE: We recommend travel insurance. Travel insurance can provide financial reimbursement should the unexpected occur.

CANCELLATION: Please be aware that most travel bookings are non-refundable and cancelled bookings will incur charges. These charges can be up to 100% of the cost of the booking, regardless of whether travel has commenced. Where we incur any liability for a cancellation fee or charge for any booking that you cancel, you agree to indemnify us for the amount of that fee or charge. Cancellations are only effective upon receipt of written notification. The following per-person fees are applicable; however, depending on the specific itinerary or other factors, we may require a non-refundable deposit:

- Up to 6 months prior to departure (July 25, 2024), \$300 per person administrative fee, plus \$1,000 non-refundable deposits given to overseas suppliers.
- 179 days to 96 days prior to departure (July 26 to October 17, 2024), deposit is forfeited.
- 95 days to 76 days prior to departure (October 18 to November 6, 2024), 50% refund is possible.
- 75 days to 60 days prior to departure (November 7 to November 22, 2024), 25% refund is possible.
- 59 days or less prior to departure (November 23, 2024), no refund is possible.

These cancellation fees are also in addition to any fees imposed by airlines.

REFUNDS: While Classic Escapes uses its best endeavors to ensure that all anticipated accommodation is available as planned, there is no claim of any nature whatsoever against Classic Escapes for a refund, in whole or in part, if any accommodation or excursion is unavailable and a reasonable alternative is not found, or if the Traveler is unable to use any service provided in the itinerary.

CHANGES: Once your tour is reserved, changes to the itinerary are possible subject to the availability of air or land space at the time of your request. Should there be any change fees imposed by any airlines or ground operators, or additional costs incurred due to the availability of any space, these costs will be invoiced to you and you will be responsible for payment thereof.

SPECIAL ARRANGEMENTS: Should you wish to make additional travel plans, including specially arranged pre- or post-tour extensions different than those offered in conjunction with your tour, a service charge of \$150 per person (over and above the cost of the services required) will be assessed.

DOCUMENTS

PASSPORTS: All individuals departing from the United States of America must be in possession of a valid passport. Please check that your passport is valid for at least 6 months beyond your intended return date. It is your responsibility to ensure that you have valid travel documentation, including but not limited to passports and visas, which meet the requirements of immigration and other government authorities at every destination. You are responsible for confirming with the United States Department of State or the representative government agency of the country to which you are traveling to confirm the requirements for visas and/or other requirements for admission to your destination. Any fines, penalties, payments, or expenditures incurred as a result of such documents not meeting the requirements of those authorities will be your sole responsibility.

REAL ID: Beginning October 1, 2021, if you plan to use your state-issued ID or license to fly within the U.S., it is your responsibility to make sure it is REAL ID compliant. If you are not sure if your ID complies, please check with your local state Department of Motor Vehicles or visit www.tsa.gov/real-id.

TRAVEL DOCUMENTS: It is the responsibility of each Traveler to obtain and carry a valid passport, visa(s), and all other documents required by applicable government regulations. When traveling domestically or internationally, the U.S. Transportation Security Administration (TSA) and U.S. Department of Homeland Security (DHS) advise that everyone carry acceptable identification in order to board a flight. Acceptable identification can be found at <http://www.tsa.gov/traveler-information/acceptable-ids>. The name, date of birth and gender that appears on the identification card must exactly match the same such data that is listed on airline ticket(s) and booking records. You acknowledge any failure to strictly comply with these requirements may result in denied boarding or an undue delay at an airport security checkpoint causing Traveler to miss flight(s), and subsequent scheduled travel bookings on cruises and tours.

Travel documents include, without limitation, airline tickets, hotel vouchers, tour vouchers, or any other document (whether in electronic form or otherwise) used to confirm an arrangement with a service provider. Travel documents may be subject to certain conditions and/or restrictions such as, but not limited to, being non-refundable, non-date-changeable, and subject to cancellation and/or amendment fees. Travel documents cannot be transferred to another person to use. All airline tickets must be issued in the name of the passport/photo identity holder. An incorrect name on a booking may result in an inability to use that booking and the booking being cancelled. Any errors in names, dates, and timings may result in an inability to use that booking and the booking being cancelled. Any errors in names, dates, and timings on your documentation will be your responsibility if we are not advised at the time of booking. Please reconfirm your flights at least 24 hours prior to departure.

PRE-DEPARTURE INFORMATION: Upon receipt of your registration and deposit, we will send you an electronic pre-departure packet containing all the information you need to prepare for your tour, including the complete itinerary, packing checklist, required documents, insurance information, etc.

FINAL DOCUMENTS: Electronic final documents and air e-tickets will be sent to you approximately two weeks prior to departure, provided all monies have been paid in full.

TRANSPORTATION

AIR TRANSPORTATION: Your program does not include international airfare. If you require assistance, contact Classic Escapes.

FREQUENT FLYER MILEAGE: Check on the airline's website to enquire who their partners are. Obtain frequent flyer mileage on any of these carriers. Present your frequent flyer card for all flight check-ins and keep the boarding passes until you receive a statement with the mileage credit.

TRANSFERS: Roundtrip airport transfers are included in the tour for guests arriving on group flights. If travelers make their own air arrangements, they will be subject to extra transfer fees.

FLIGHT CONFIRMATION: We strongly suggest that you reconfirm exact flight times with the carrier prior to departure. Air travelers are required to check in at least 2 hours prior to departure time for domestic flights and 3 hours for international flights and must report to the gate at least 30 minutes prior to departure time. Failure to comply may result in the loss of the seat to another passenger.

HAZARDOUS MATERIALS: Federal law prohibits passengers from bringing hazardous materials on the aircraft. Federal law forbids the carriage of hazardous materials aboard aircraft in the passenger's luggage or on the passenger's person. A violation can result in five years' imprisonment and penalties of \$250,000 or more (49 U.S.C. 5124). Hazardous materials include explosives, compressed gases, flammable liquids and solids, oxidizers, poisons, corrosives, and radioactive materials. Examples: Paints, lighter fluid, fireworks, tear gases, oxygen bottles, and radiopharmaceuticals. There are special exceptions for small quantities (up to 70 ounces total) of medicinal and toilet articles carried in the passenger's luggage and certain smoking materials carried on the passenger's person. For further information, each passenger should contact the relevant airline representative(s) on their itinerary. Restrictions on hazardous materials are listed <http://www.tsa.gov/traveler-information/prohibited-items>.

INSECTICIDE NOTICE: Some countries require insecticide spraying of aircraft prior to a flight or while you are on the aircraft. We recommend that you refer to the Department of Transportation's list of airports in countries that require airlines to treat the passenger cabin with insecticides prior to the flight or while on the aircraft available at <https://www.dot.gov/office-policy/aviation-policy/aircraft-disinsection-requirements>.

BAGGAGE & FEES: Additional fees for baggage may apply. Please contact your airline or refer to its website for detailed information regarding its checked baggage policies. On average, international flights from the USA allow one piece of checked luggage, not exceeding 50 pounds, plus a carry-on piece not exceeding 15 pounds; however, we always recommend that you check your airline's policy just before departure, as luggage limitations are always subject to change. There may also be luggage and weight restrictions for your destination and that information will be forwarded to you with your pre-departure material and also listed on your final documents.

LUGGAGE ALLOWANCES ON INTERNAL FLIGHTS: Your journey includes internal flights.

Check-in Baggage allowance on Indigo Flights in Economy Class is 15 Kg (33 lbs.) per person.

Extra baggage allowance can be pre-purchased. Charge for excess baggage is approx.: USD \$7 per Kg. (2.2 lbs., subject to change).

AIRLINE CLAUSE: The airlines concerned are not to be held liable for any act, omission, or event during the time the passengers are not on board their planes or conveyance. The passengers' tickets in use by the airline or by other carriers concerned when issued shall constitute the sole contract between the airlines and the purchaser of these tickets and/or passengers.

DELAYS: We cannot be held liable for any delays or additional costs incurred as a result of airlines not running to schedule. Any additional land or air fees imposed on account of airline delays will be borne by the traveler.

TRIP DETAILS

ACCOMMODATIONS: You will marvel at the wonderful accommodations provided throughout your tour. All rooms have private bathroom facilities and air conditioning and/or fans, unless otherwise specified. All rates are based on double occupancy. Most rooms are twin-bedded, but king-size beds are occasionally available and should be requested in advance. Accommodations listed in this itinerary are correct at time of writing, but on rare occasions may be substituted for a different property of comparable quality.

MEALS: All meals as specified in the itinerary. Please notify us if you have special dietary needs or requests, and we will do our best to accommodate.

WATER: It is always advisable to drink bottled and/or filtered water when traveling overseas. Safe drinking water will be provided to travelers free of charge in the vehicles and during meals.

PHOTOGRAPHY: The Company reserves the right without further notice to make use of any photograph or video taken on the tour by our photographers without payment or permission. We guarantee that no photographs of a compromising nature will be used.

GUIDES: If one of Classic Escapes' guides are unable to take a trip due to circumstances out of our control (i.e., illness, etc.), we reserve the right to substitute with another guide.

TOUR ITINERARY: To the best of our knowledge the itinerary is correct at the time of printing. We cannot be held responsible for any inaccuracies or changes that may occur after printing.

HEALTH AND SPECIAL REQUIREMENTS: You must have the proper immunizations and health screenings and required documentation of such immunizations and screenings before travel. It is your responsibility to ensure you are aware of any health requirements, health advisories, or health travel restrictions applicable to your travel destinations and to ensure that you carry all necessary vaccination documentation. Classic Escapes is not responsible for providing you with this information. Travel carriers and local authorities at travel destinations may require specific testing prior to boarding and/or upon arrival at your destination, including, but not limited to, a temperature check as a result of the COVID-19 pandemic. You may be denied entry onto your carrier and/or entry upon arrival at your destination or be required to self-quarantine at your destination and upon your return to the United States. You must comply with local government regulations. Any additional costs are your responsibility. Check the State Department Web site <http://travel.state.gov>, for relevant information relating to travel to specific destinations, and the Center for Disease Control <http://wwwnc.cdc.gov/travel/> relating to health issues related to travel.

You must be in good physical and mental health. It shall be your duty to inform us in case you have any medical condition that may affect your ability to enjoy and pursue fully the services of Classic Escapes. By registering for a Classic Escapes service/program, you certify that you do not have any mental, physical, or other condition or disability that would create a hazard for yourself or others.

COVID-19 ACKNOWLEDGEMENT

In order to participate in one of our tours, travelers must certify that they have not recently been treated for, nor are aware of any physical or other condition or liability that would create a hazard to themselves or other members of the tour and agree to comply with all health protocols as directed by Classic Escapes and their representatives during their journey. Travelers must maintain suitable physical distancing and frequently wash or sanitize hands throughout their journey. Travelers are required to follow guidelines established by local regulations which may include wearing masks in vehicles, indoor areas, and any outdoor areas where physical distancing is not possible. Explicit instructions will be provided by our guide on arrival. Noncompliance with these procedures will result in the suspension of the journey. **Travelers voluntarily assume all risks and related expenses in the event that they or any member of their traveling party require testing, quarantine, or become infected with COVID-19.** Classic Escapes will endeavor to provide assistance wherever possible.

TRAVEL INSURANCE: For your protection, we strongly recommend that you purchase trip cancellation and travel accident insurance. However, no representation or description of the insurance made by Classic Escapes to you constitutes a binding assurance or promise about the insurance. Classic Escapes is not an insurance company and has no responsibility for the submission, payment, or adjustment of any insurance claims. Any insurance claims that may fall under the relevant travel insurance policy must be submitted to the insurance company identified in the policy. We recommend the following service – please visit the website to enroll: <http://www.travelguard.com/classicescapes/>. Any questions about what travel insurance does or does not cover should be addressed directly to the travel insurance company, Travel Guard at 1-866-385-4839 and reference ARC #71298. If you decline insurance coverage, you will personally assume full responsibility for any financial loss associated with your travel arrangements, and you could lose your travel investment and/or have to pay more money to correct the situation. **THE PURCHASE OF TRAVEL INSURANCE IS HIGHLY RECOMMENDED ON ALL TRIPS.**

EMERGENCY EVACUATION COVERAGE: For the convenience of our travelers, Classic Escapes provides a complimentary Medical Insurance Plan during your trip via Travel Guard Group, Inc. This includes:

- Emergency evacuation insurance up to \$100,000.
- Up to \$25,000 medical expense and up to \$500 dental expense coverage subject to the terms and limitations of the insurance policy.
- 24-hour worldwide travel and medical assistance.

Medical Plan (926801)

Please click here to view complete coverage of details.

https://webservices.travelguard.com/Product/FileRetrieval.aspx?CountryCode=US&StateCode=AL&ProductCode=926801&PlanCode=NW&FileType=PROD_PLAN_GM

TERMS & CONDITIONS

TOUR OPERATOR: Classic Escapes acts as a tour operator/travel agent only. Classic Escapes does not own, operate, manage, or control any independent suppliers of services and is not liable for their acts or omissions. Classic Escapes' obligations to you are to make travel bookings on your behalf and to arrange relevant contracts between you and other travel service providers. We have no responsibility for these services, nor do we have the authority to make any warranty or representation regarding their standard. Requests cannot be guaranteed. All bookings are subject to the terms and conditions and limitations of liability imposed by these travel service providers. You understand that your legal recourse is against the specific provider, not Classic Escapes. Conditions can change rapidly in a country at any time. It is your responsibility to check the USA Government Travel advisories for your intended destination at <https://travel.state.gov/content/travel.html>.

RESPONSIBILITY OF THE COMPANY: We always do our best to make sure your travel arrangements are satisfactory. However, Classic Escapes and its employees, shareholders, subsidiaries, affiliates, officers, directors, successors, agents, and assigns do not own or operate any third-party entity that provides goods and services for your travel, including without limitation lodging facilities, airline, vessel, motorcoach, or other transportation companies, local ground operators, providers, food service providers, etc. All such persons and entities are independent contractors and are in no way affiliated to Classic Escapes. We are not liable for any delays or additional costs incurred by the Traveler as a result of any actions or occurrences by any of the foregoing third party entities.

LIABILITY: Classic Escapes is not liable for any negligent or willful act or failure to act of any travel service provider or of any third party.

Because Classic Escapes does not have the right to control the operations of such travel service provider or any third party, you agree that Classic Escapes is not liable for any personal injury or property damage which may arise out of these services. Classic Escapes hereby disclaims any liability whether based on contract, tort, strict liability or otherwise, including without limitation liability for any direct, punitive, special consequential, incidental or indirect damages, in connection with the goods or services provided by any supplier booking through Classic Escapes, including without limitation liability for any act, error, omission, injury, loss, accident, delay or irregularity which may be incurred through the fault, negligence, willful acts, omissions or otherwise of such travel service provider or any third party, or their respective employees, agents, servants, or representatives, including, without limitation, their failure to deliver or their partial or inadequate delivery of services, their cancellation and refund policies, fuel increases, bankruptcy or cessation of operations and other matters outside of Classic Escapes' control, and you hereby exonerate Classic Escapes from any liability with respect to the same.

FORCE MAJEURE: Classic Escapes will not be in breach of these terms and conditions or otherwise be liable to you, for any failure or delay in performing an obligation under this Agreement that is due to any of the following causes, to the extent beyond its reasonable control: acts of God, accident, riots, war, terrorist act, illness, disease, epidemic, pandemic, quarantine, civil commotion, breakdown of communication facilities, including web host and internet service provider, breakdown or malfunction of equipment, destruction of or serious damage to facilities, natural catastrophes including, but not limited to extreme weather events, floods and volcanic eruptions, governmental acts or omissions, changes in laws or regulations, national strikes, fire, explosion, generalized lack of availability of raw materials or energy, and any other unforeseen circumstance which is beyond the control of Classic Escapes. **THE PURCHASE OF TRAVEL INSURANCE IS HIGHLY RECOMMENDED ON ALL TRIPS.**

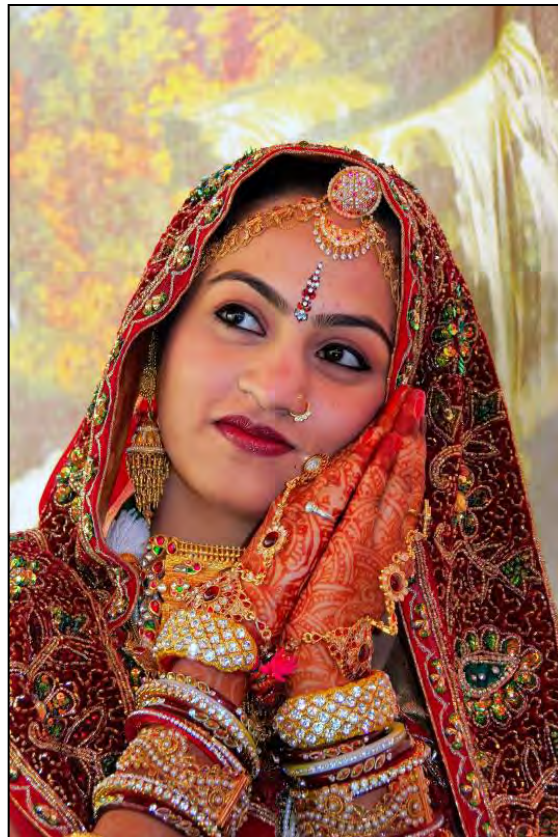
REFUSAL OF SERVICE: Service providers reserve the right to refuse service to travelers at their sole discretion, including, without limitation, if the traveler: (i) lacks proper documentation for the country of destination; (ii) has a contagious disease; (iii) is under the influence of alcohol, drugs, or narcotics; and/or (iv) manifests disruptive and/or unruly behavior. Classic Escapes assumes no liability for the acts of the service provider in refusing service.

ELECTRONIC OR HANDWRITTEN SIGNATURE: Both parties agree that you may acknowledge and agree to these Terms: (i) electronically; (ii) by handwritten signature; (iii) by any other electronic means, including, without limitation, via email acceptance of

these Terms; or (iv) by your implied consent deemed via your actions, which shall include without limitation the payment of the invoice in part or in full or your use of the services provided by Classic Escapes or any other travel supplier related to your booking. All such means will be deemed to constitute effective acknowledgement and execution of this Agreement and shall be sufficient to bind the parties to the terms and conditions of this Agreement.

RESERVATION OF RIGHTS: We reserve the right, in our sole discretion, to change these Terms and Conditions at any time. Updated versions of the Terms will be provided to you, will be posted on our website, and are effective immediately on posting.

GOVERNING LAW: The construction, validity, and performance of these Terms and any disputes between the parties shall be governed by and construed according to the laws of the State of New York, without giving effect to its conflict of law principles, and any federal laws applicable therein. Both parties submit to the exclusive jurisdiction of the courts of the State of New York with respect to any legal proceedings relating to these Terms.



RESERVATION FORM:

TOLEDO ZOO ~ INDIA

25ASZ0121/TOLEDO

Enclosed is my deposit for \$ _____ (\$2,200 per person for the main trip, plus \$1,300 for the post- extension & \$1,000 for the pre-extension) to hold _____ place(s) on the classic safari to India departing January 21, 2025. Check the Journey at a Glance page for all pricing.

Final payment due date is **October 18, 2024**

Please make check payable to CLASSIC ESCAPES, 191 W Poplar Street, Floral Park, NY 11001 **OR**

Charge deposit to: MasterCard Visa American Express Discover

(Credit Card Authorization form needs to be completed and returned to Classic Escapes via mail or fax to 718-204-4726)

A copy of your passport must accompany this form to confirm reservation. Upon receipt of your signed reservation form, passport copy and deposit we will, subject to availability, reserve your spot on the tour. Passport must be valid for at least 6 months after the return of your trip and have four consecutive blank pages in the visa section.

1) NAME (As appears on passport): Mr. Mrs. Ms. _____ DOB _____

Passport No. _____ Green Card No. _____ Expiration Date _____ Nationality _____

2) NAME (As appears on passport): Mr. Mrs. Ms. _____ DOB _____

Passport No. _____ Green Card No. _____ Expiration Date _____ Nationality _____

STREET ADDRESS: _____

CITY: _____ STATE: _____ ZIP: _____

PHONES: HOME: () _____ OFFICE: () _____ MOBILE: () _____

E-MAIL ADDRESS: _____ FAX: () _____

- I certify that I have not recently been treated for, nor am I aware of any physical or other condition or liability that would create a hazard to myself or the other members of this tour.
- The two of us above are sharing a room and, where possible, would like a room with: ONE TWO Beds (Make one selection only)
- I am sharing with _____ (form sent separately)
- I need assistance in securing a roommate. I understand if Toledo Zoo or Classic Escapes cannot locate one for me by final payment date, I agree to pay the additional single supplement amount listed on the Journey at a Glance page.
I prefer to share with: Smoker Non-smoker.
- I desire single accommodations, if available, and will pay the single supplement additional cost
- I desire to participate in the optional extension to Jaipur & Udaipur
- I desire to participate in the optional extension to Kaziranga

CLASSIC ESCAPES CAN ASSIST WITH INTERNATIONAL FLIGHT ARRANGEMENTS FROM ANY US CITY.

- YES, I WILL REQUIRE ASSISTANCE. PLEASE SEND ME INFORMATION TO DEPART FROM _____
I REQUIRE: ECONOMY BUSINESS/FIRST CLASS.

All rates quoted are based on tariffs and value of foreign currencies in relation to the U.S. dollar in effect as of June 10, 2023 and are subject to change. Refund is made less any cancellation charges levied in accordance with the policy outlined in the accompanying Conditions of Travel. **WE STRONGLY RECOMMEND THAT YOU OBTAIN TRAVEL INSURANCE. RESERVATIONS ARE ACCEPTED SUBJECT TO TOUR CONDITIONS AND WILL BE CONFIRMED ONLY IF ACCOMPANIED BY COMPLETED FORM SIGNED BY THE TOUR PARTICIPANT(S).**

SIGNATURE: _____ DATE: _____

SIGNATURE: _____ DATE: _____

CLASSIC ESCAPES INC.
191 W Poplar Street,
Floral Park, NY 11001

(We recommend that you keep a copy of your selections as noted above for your future reference)



191 W Poplar Street, Floral Park, NY 11001
T: (718) 280-5000; (800) 627-1244
F: (718) 204-4726
E: info@classicescapes.com

TOLEDO ZOO~ INDIA
JANUARY 21 TO FEBRUARY 4, 2025

CREDIT CARD PAYMENT AUTHORIZATION

Please Note: If you wish to charge your deposit to Visa, MasterCard, American Express or Discover, this authorization form MUST be completed and returned to us along with your reservation form before we can process your application.

I authorize (**Classic Escapes Inc.**) to charge my VISA/MASTERCARD/DISCOVER/AMEX listed below:

Name appearing on credit card _____

Card number _____ Expiration date _____

Card Verification Number* _____ Card Type _____

Billing address of credit card _____

Amount of transaction _____

Services rendered/Items purchased _____

Phone number _____

Signature _____ Date _____

***How To Locate Your Card Verification Number:**

(**Visa, MasterCard, Discover:** Locate the credit card number on the back of the card above the signature box. Enter the 3-digit number which follows the credit card number. **American Express:** Enter the 4-digit number found directly above and to the right of the credit card number.)

I understand that all rates quoted on this tour I'm making a payment on are based on tariffs and value of foreign currencies in relation to the U.S. dollar in effect as of June 10, 2023, and are subject to change Cancellations are only effective on receipt of written notification. The following per person fees are applicable on this tour:

- Up to 6 months prior to departure (July 25, 2024), \$300 per person administrative fee, plus \$1,000 non-refundable deposits given to overseas suppliers.
- 179 days to 96 days prior to departure (July 26 to October 17, 2024), deposit is forfeited.
- 95 days to 76 days prior to departure (October 18 to November 6, 2024), 50% refund is possible.
- 75 days to 60 days prior to departure (November 7 to November 22, 2024), 25% refund is possible.
- 59 days or less prior to departure (November 23, 2024), no refund is possible.

These cancellation fees are also in addition to any fees imposed by airlines.

PLEASE NOTE: At times, our bank requires photocopy of credit card (both sides) and driver's license or document showing signature of cardholder, in order to process the charge. While it is not required at this time that you include these materials with your deposit, if our bank requests it, we will contact you for these copies.