



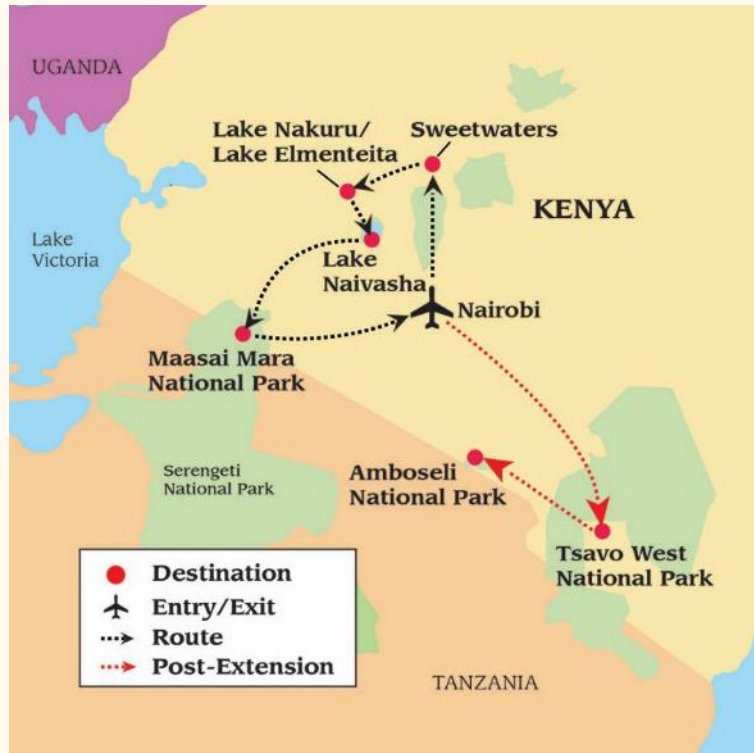
CLASSIC  
*Escapes*



Kenya

June 16 to 27, 2024

For your safari, we've chosen spectacular national parks and conservation areas that manifest the great diversity of wildlife and habitat found in Kenya.



**Sweetwaters Nature Reserve:** Sweetwaters is a 24,000-acre privately owned savannah reserve on the Equator in view of Mount Kenya. Wildlife is plentiful here, including elephant, reticulated giraffe, black rhino, lion and cheetah. More than 400 species of birds have been recorded at Sweetwaters. In 1993 Lonrho Africa, the Kenya Wildlife Service, and the Jane Goodall Institute (JGI) established a 200-acre (81- hectare) Chimpanzee Sanctuary, which is accessible to visitors by boat. The aim of the project was to set up a permanent refuge where chimps could be introduced, rehabilitated, and taught to live on their own in an environment similar to their natural home.

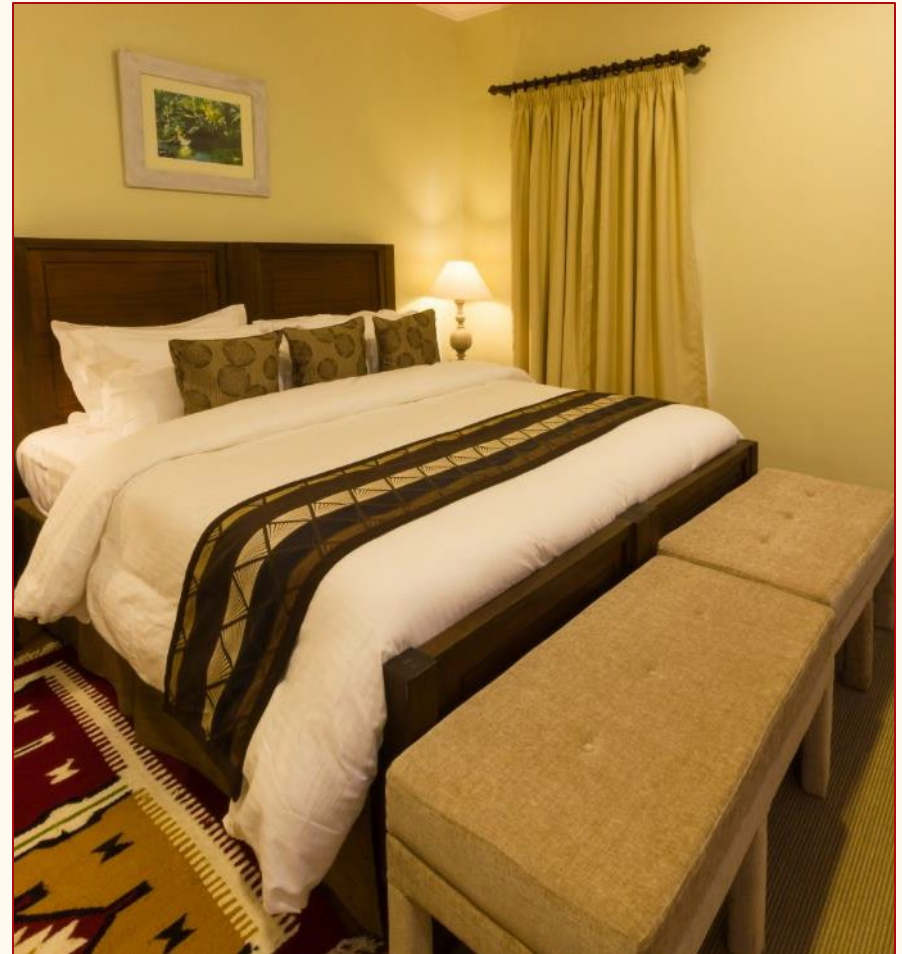
**Lake Nakuru National Park** – Located in the heart of the Great Rift Valley, Lake Nakuru is one of the most biodiverse regions in Africa and a sanctuary for Kenya's largest population of wild rhino, Rothschild's giraffe, hippo, bushbuck, leopard, and nearly 450 bird species.

**Maasai Mara National Reserve:** Undoubtedly the most iconic wildlife destination in the world, the Maasai Mara flows openly to Tanzania's Serengeti National Park to form the Serengeti or 'Endless Plain' in the language of the Maasai people. Covering nearly 12,000 square miles of an unobstructed conservation area, it hosts the largest land migration in the world. More than 2 million wildebeest, zebra, antelope, and Cape buffalo make a circular trek following the life-giving rains that bring mineral-rich grasses.



# Spend two nights at the Residences at Karen.

Located on a gated, private golf resort, each cottage offers privacy and luxury with modern amenities





# David Sheldrick Wildlife Trust

At the David Sheldrick Wildlife Trust, a dedicated nursery offers refuge and rehabilitation for orphaned infant elephants. The Trust is one of Africa's oldest conservation charities.





# African Foundation for Endangered Wildlife

Visit the African Foundation For Endangered Wildlife (AFEW) and learn about their breeding program for the endangered Rothschilds Giraffe.

The AFEW breeding program has released over 50 Rothschilds giraffe into safe game parks and conservancies across Kenya.







# Typical Daily Safari Schedule

Time	Activity
6:00 a.m.	Wake up call. Light breakfast consisting of coffee, tea and snacks may be served.
6:30 a.m.	Depart on a game drive, returning approximately 9:00 a.m.
9:00 a.m.	Full American breakfast will be served, which consists of a large selection of cereal, fruit, eggs, bacon etc.
10:00 a.m.	Depart on an optional game drive, returning approximately 12 noon
1:00 p.m.	Lunch is served (most likely in a buffet style). From now until afternoon game drive, your time is at leisure to read or relax.
4:00 p.m.	Depart for an afternoon game viewing activity.
6:30 p.m.	Return to camp from third game drive before dark.
8:00 p.m.	Dinner is served (sit down style).

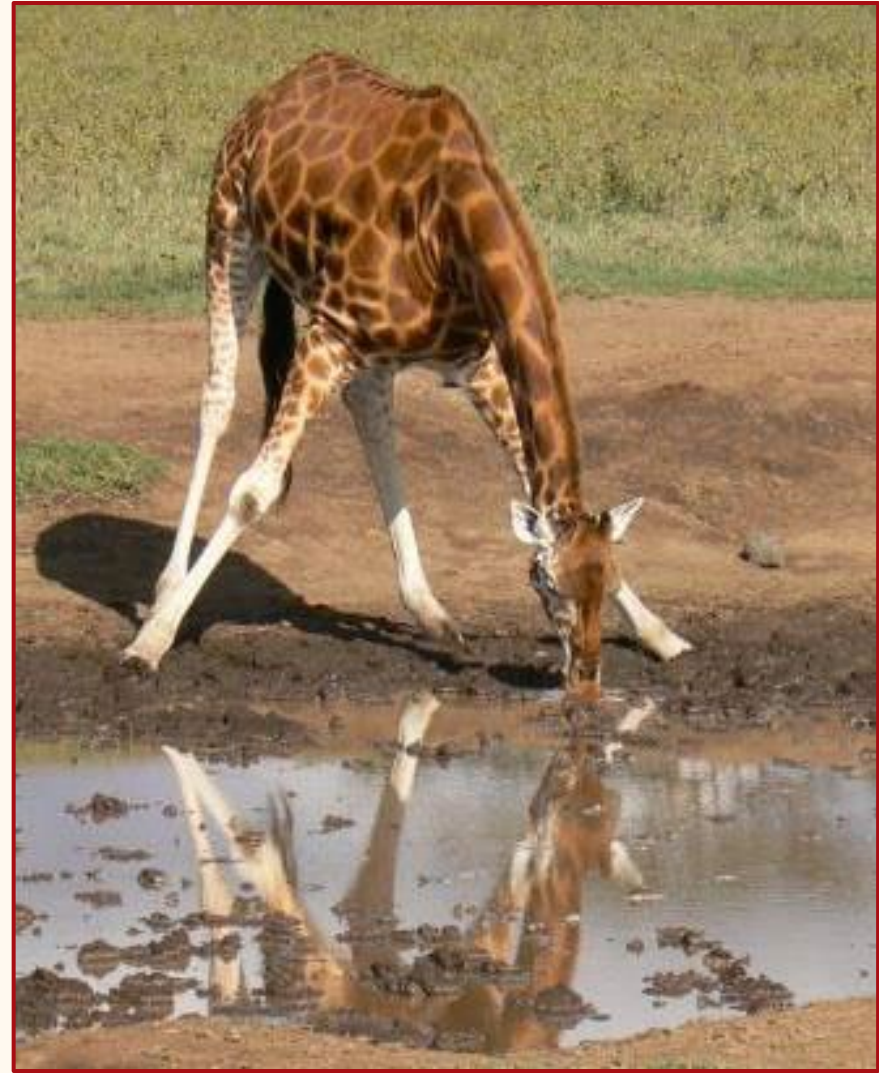
\* On travel days, you begin with a full breakfast, followed by a drive to your next destination. Usually, this drive is not more than 4 hours in length, although the drive to the Maasai Mara is a bit longer. You arrive at your next lodge in time for lunch and your day's schedule continues as noted previously.

# Sweetwaters Tented Camp



Sweetwaters Tented Camp is a private concession within the greater Ol Pejeta Conservancy. Spacious canvas and timber tents have ensuite bathrooms, wi-fi, and broad verandahs overlooking the waterhole and savannah beyond.





From your camp, you can watch a daily parade of elephants, giraffes, zebra, and impala drinking at the floodlit waterhole. Sometimes lions too!



# Chimpanzee Sanctuary

Visit the 200-acre Chimpanzee Sanctuary at the Sweetwaters Conservancy, established by Kenya's Wildlife Service, the Ol Pejeta Conservancy, and the Jane Goodall Institute, where orphaned and abused chimps are rehabilitated.



Jane Goodall pictured here.



# Lake Nakuru National Park

Explore Lake Nakuru National Park, a UNESCO World Heritage Site and home to 450 bird- and 56 mammal species including black- and white rhino, Cape buffalo, zebra, eland, waterbuck, reedbuck, lion, cheetah, leopard, and Rothschild's giraffe.





While Lesser- and Greater Flamingo may steal the show,  
watch for some of the other 450 bird species present in Nakuru National Park.



Little Bee-eater



Yellow-necked Spurrow

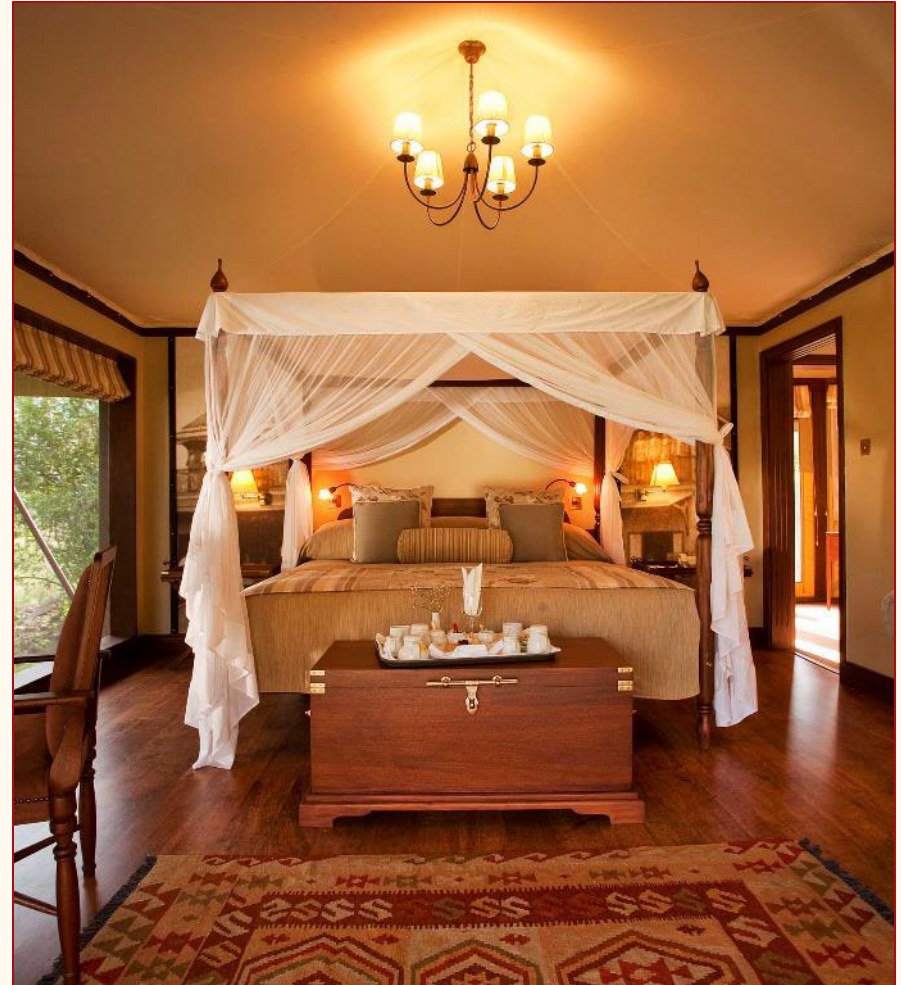


Long-crested Eagle



# Stay at Lake Elementeita Serena for the next two nights.

This small luxury camp offers gourmet dining, spa treatments, and lake views from private patios. Enjoy your free time on nature trails along the shores of the lake, a Ramsar Wetland of International Importance.





At the center of Naivasha, Crescent Island Game Sanctuary offers the perfect opportunity to explore and view wildlife on foot. Giraffe, zebra, several species of antelope, Vervet monkey, bat-eared fox, silver-backed jackal, and white-tailed mongoose roam free.

# Welcome to the Maasai Mara National Reserve



Arrive in the Maasai Mara, a vast landscape of incredible abundance. Resident elephant, antelope, and Cape buffalo are joined by migrating herds of wildebeest, zebra, and an escort of cheetah, leopard, and large prides of lion.





# Mara Serena Safari Lodge

Elevated on a hill in the Mara Triangle, the bungalows of the Serena Safari Lodge offer views over the plains and Mara River in the southern Maasai Mara.









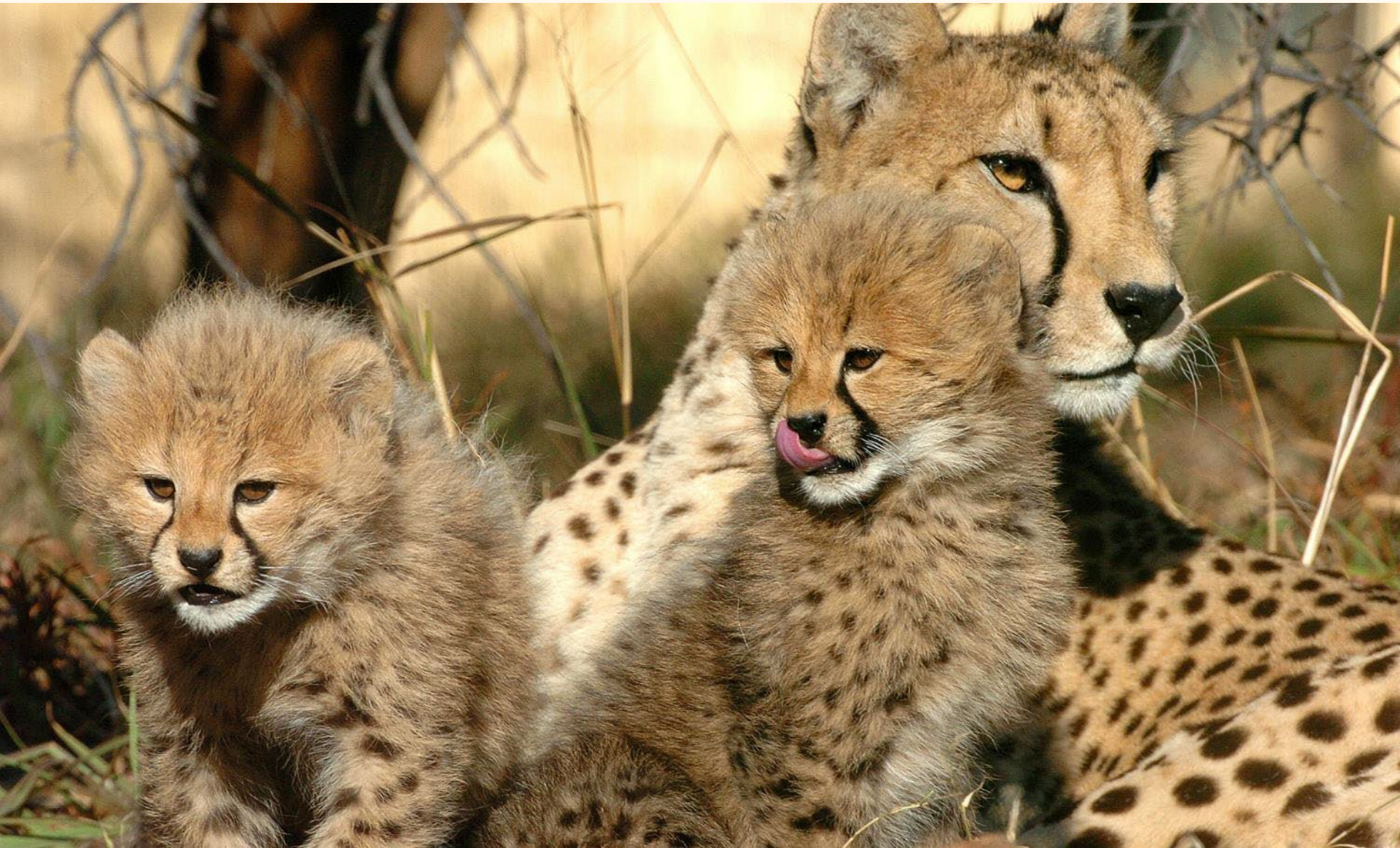


Common Eland



Kirk's Dik-Dik

Africa is home to 73 out of 86 known species of wild antelope. Large herds can be found throughout the Maasai Mara from the diminutive Kirk's Dik-Dik (11 lbs.) to the massive, ox-like Common Eland (2,100 lbs.)







## Post-Extension to Tsavo West & Amboseli National Parks

Returns to the U.S. on July 2, 2024

Despite the relatively arid conditions of both Tsavo and Amboseli, abundant wildlife is sustained year-round by natural springs and groundwater from the Kilimanjaro massif. Lion, leopard, cheetah, elephant, oryx, eland, and buffalo are among the 50+ mammals that inhabit the area while over 400 bird species including the Taveta Golden Weaver have earned both parks the designation of Important Birding Area by BirdLife International.



# Enjoy the nights at the Kilaguni Serena Safari Lodge.

Rooms are ensuite with private balconies, to enjoy views of wildlife and star-filled skies over the open savannah. Illuminated at night, wildlife gathers at the waterhole which can be seen from your balcony, the lounge, or dining room.



Tsavo West National Park is a beautiful, rugged wilderness with gushing springs and stark lava fields.



The savannah ecosystem includes open grasslands, scrublands, and Acacia woodlands, belts of riverine vegetation, and rocky ridges where teeming herds can be seen on the plains below. Enjoy some of the most magnificent game viewing in the world of elephant, rhino, hippo, lion, cheetah, leopard, buffalo, and diverse plant and bird species.







# Continue to Amboseli National Park, at the foot of Kilimanjaro



The name “Amboseli” comes from the Maasai word meaning salty dust. Despite this forbidding moniker, it is one of the best places in Africa to view large herds of elephants up close.





# Stay at Amboseli Serena Safari Lodge

Nestled in a grove of acacia trees the Maasai-inspired design of the Amboseli Serena Safari Lodge surrounds a garden and a palm-shaded swimming pool with uninterrupted views of Mount Kilimanjaro and open plains.







Yellow Baboon



Gazelle bucks dueling



Maasai Giraffe





## Your Adventure Cost

### KENYA

Safari Mystique Under African Skies  
June 16 to 27, 2024

Cost: Per Person, Based on Double Occupancy	Main Program Based on 10 travelers	Post-Extension to Tsavo West & Amboseli Based on 10 travelers
Land only  Adult Rate Below 12 sharing with 2 parents	\$7,995 per person \$4,495 per child	\$2,995 per person \$1,995 per child
Single Room Supplement*	\$1,495 per person for first two singles, additional	\$495 per person, additional
Airfare	Contact Classic Escapes if you require assistance.	



## Questions?

If you have questions, feel free to contact your Journey Manager, Lori Ellefsen at 718-280-5021, or email her at [Lorie@classicescapes.com](mailto:Lorie@classicescapes.com).