



INDIANA UNIVERSITY
ALUMNI ASSOCIATION
IU Travels



YOU ARE CORDIALLY INVITED TO JOIN
IU TRAVELS

ON A WILDLIFE SAFARI TO
BOTSWANA

DESERT SUNSET, DELTA DAWN, CHOBE MIDDAY

MARCH 13 TO 25, 2025



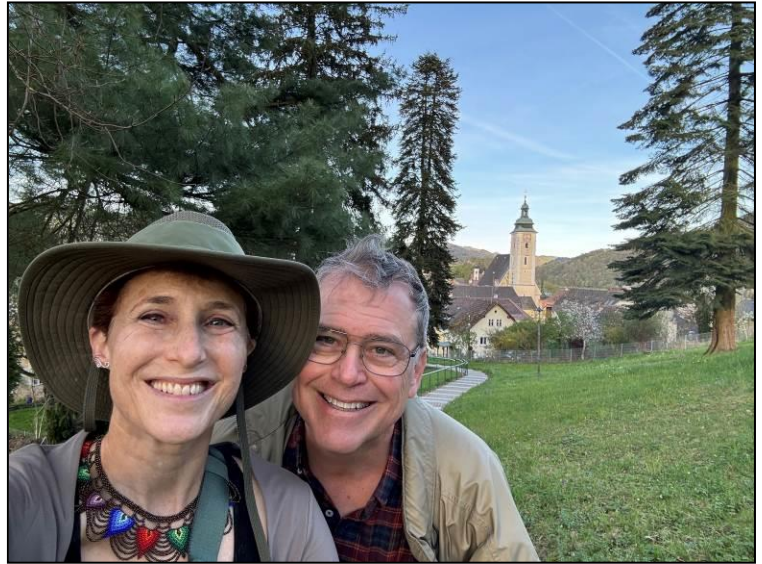
191 W Poplar Street, Floral Park, NY 11001
T: (718) 280-5000; (800) 627-1244
F: (718) 204-4726
E: info@classicescapes.com
W: www.classicescapes.com

For more information, find us on:
facebook.com/Classic.Escapes.inc
instagram.com/classicescapesinc

YOUR INDIANA UNIVERSITY HOSTS: BETH & FRED CATE

Fred H. Cate is a Distinguished Professor and C. Dutton Professor of Law in the IU Maurer School of Law, and served from 2015-2023 as IU's Vice President for Research.

Beth is Clinical Associate Professor of Law and Public Affairs at IU's O'Neill School of Public and Environmental Affairs, and practiced law in the public and private sectors for over 20 years, most recently as general counsel to the City of Bloomington. Whenever they are not teaching or writing about the law (cybersecurity and privacy law for Fred, constitutional and administrative law for Beth), they are pursuing their other chief passions – wildlife conservation, photography, and travel. Fred can usually be found photographing squirrels in Dunn Woods, frogs in their backyard pond, and animals at the Indianapolis Zoo and other hot spots around the world. Beth, a member of the Zoo's Founder Board who serves on the Board's Conservation and Collections committees, spends her Sundays helping to care for the Zoo's African elephants, and has traveled the world from Bhutan to Bulgaria (including five trips to Africa) in search of adventure and insight.



YOUR SPECIALIST GUIDE: NIC PROUST

Nic is native to Cape Town and grew up on the slopes of Table Mountain, learning to love the wild beauty of the Cape and all of the life within it. He earned a degree in Ecology and Earth and Geographic Sciences at the University of Cape Town and a post-graduate degree with honors in Zoology from Stellenbosch University. His academic expertise has given him the opportunity to have a hands-on role in conservation work, most notably with the reintroduction of over 50 black and white rhinos in Botswana. His studies are also an invaluable feature of his tours, where he has the unique ability to provide a range of insight into what travelers in his care encounter on the road. After a 5-year tenure in the Okavango as a conservation ecologist, Nic spent 12 years guiding wildlife safaris throughout Southern Africa. He has a passion for wildlife, sharing his experiences, and the wonders of the bush through his guiding, photography, and conservation blog.



A MAP OF YOUR JOURNEY:



YOUR ITINERARY

DAY 1~ THURSDAY~ MARCH 13

USA/EN ROUTE

Your journey begins as you board your overnight flight to Johannesburg. (Meals Aloft)

DAY 2~FRIDAY~ MARCH 14

JOHANNESBURG

Upon arrival at the Johannesburg International Airport this afternoon, you will be met and escorted to your hotel. Often called Jo'burg, Johannesburg is the country's largest city and financial center with ultra-modern skyscrapers and a bustling way of life. Truly, the city of gold, as its claim to fame is the gold that was discovered close by.

Tonight, enjoy a welcome dinner at your hotel.

You will begin your adventure in the lap of luxury. D'Oreale Grande is situated near Johannesburg International Airport. D'Oreale Grande boasts luxurious accommodation, with palatial buildings set in a display of gardens, fountains, and statues. Richly cloaked surroundings such as marble floors, plush carpets, magnificent stained-glass domes, highly decorated murals and frescos, sculptures, intricate mosaics and Roman columns and arches contribute to an atmosphere of intimacy, classical elegance, and lavish opulence. It's an ideal place for resting up after the long international flight.

Overnight at D'OREALE GRANDE. (NO Meals; D)
www.doreale.com/



DAYS 3/4/5~ SATURDAY/ SUNDAY/MONDAY~ MARCH 15/16/17

MAUN/MAKGADIKGADI & NXAI PANS NATIONAL PARKS/KHUMAGA VILLAGE

Fly to Maun, Botswana's tourism capital, where you will connect with your flight to Leroo La Tau, situated at the edge of Makgadikgadi Pans National Park. This park is named for ancient Lake Makgadikgadi, a body of water that disappeared thousands of years ago, leaving behind a collection of salt pans that cover approximately 6,200 square miles, due south of the Okavango. The Makgadikgadi is the largest expanse of 'nothingness' on Earth, devoid of anything but salt and shimmering horizon, with an area the size of Switzerland. The pans are clearly visible from outer space. The baking soda desert is transformed into one of Africa's most fecund ecosystems during the rainy season. Unbelievable numbers of migratory birds flock to the pans and the grasslands swarm with a living mantle of zebra and wildebeest, participants in the second-largest animal migration on the African continent. The dry season brings desert wildlife such as gemsbok and springbok into view.





Leroo La Tau is built on the cliffs above the Boteti River which allows guests a raised vantage point resulting in spectacular wildlife sightings. The Boteti River, which dried up for 28 years, is now flowing again. This lifeline of water is a magnet for wildlife. During the wet season (January-March), there is an influx of migratory bird species, while resident desert species welcome visitors by showing off their breeding plumages. While the volume of game is lighter than in drier months, the river's return has transformed the region and supports a good volume of wildlife all year round, with sightings of all the common antelopes, alongside healthy populations of kudu and giraffe. Huge elephant bulls are based along the river throughout the year, and lions are very active in the region.

Depending on the rains of the season, the zebra will begin their migration back to the river around April, in search of water. As the dry season draws in, so too do the zebra and wildebeest – some 30,000 strong – resulting in magical scenes of thousands of zebras galloping up and down the dusty riverbanks of the Boteti for quite possibly one of the best zebra-viewing experiences in Africa! The migration brings an increase in levels of predator activity, including lion, cheetah, brown and spotted hyena and even wild dog. Most unique are the crocodile and an amazing pod of hippos, which have survived in extremely adverse conditions for many years, and now make this area their home. Bird species include large numbers of White-backed and Lappet-faced Vultures, Bateleur, Tawny and Martial Eagles, Lanner and Red-footed Falcons, Gabar, and Pale Chanting Goshawks. Also found are Red-billed and Orange River Francolin, Black, and Red-crested Korhaan, Kori Bustard, Crowned Plover, Double-banded Courser, Spotted Dikkop, all species of sandgrouse, Giant Eagle, Pearl-spotted Owls, and a large numbers of hornbill species.

On your second day, depending on the location of the wildlife, enjoy a full-day excursion to Nxai Pans National Park. Here one can witness the typical Kalahari Plains wildlife characteristic of the desert regions. Large herds of springbok, oryx (gemsbok), and eland graze here all year round and during the summer season (green season) zebra and wildebeest can be seen en masse during the migration.

Leroo La Tau works closely with the community of Khumaga Village, which is located near the lodge, providing an opportunity for guests to see and understand what rural local life is about. A visit to the village and the local school will be included in your stay at Leroo La Tau. Activities during your three-night include game drives, night drives, and boat cruises on the Boteti River.



Leroo La Tau offers accommodation of 12 luxurious thatched and glass-fronted suites with en-suite bathrooms, comfortable double beds and ceiling fans, with each unit raised on a wooden platform overlooking the Boteti River Valley below. The rooms are spread out along the river bank, and each has its own very unique view out over the Makgadikgadi Pans National Park. The main lounge and dining room areas with their inviting wooden and thatch finishings offer guests the opportunity to sit back and relax at the bar while listening to the wide variety of night sounds so characteristic of the African bush. During the day guests can enjoy cooling off in the pool while still appreciating the animals moving around the waterhole. A sparkling swimming pool awaits guests after a rewarding day of game viewing. There is also a hide built off to the side of the campfire that allows one to get a closer view of the animals. Guest laptop is available with basic internet connection in the library – there is limited Wi-Fi available.



Overnights at the LEROO LA TAU. (All Meals Daily) www.desertdelta.com/botswana-safari-lodges

DAYS 6/7/8~ TUESDAY/WEDNESDAY/THURSDAY~ MARCH 18/19/20

MOREMI GAME RESERVE~ CAMP XAKANAXA

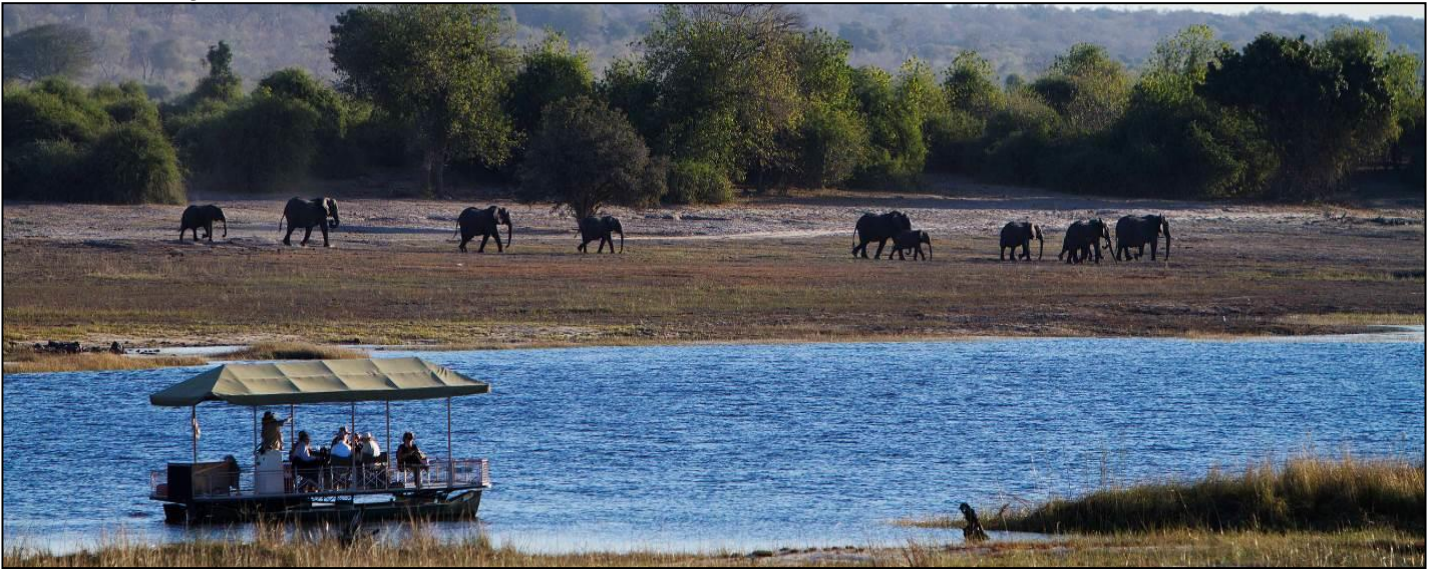
Fly to Camp Xakanaxa in the Moremi Game Reserve. One of the finest wildlife viewing areas in Africa, Moremi incorporates most of the Okavango Delta waters and has a vast selection of exotic wildlife. To the south and east, the reserve offers sanctuary to the most varied herds in southern Africa. To the north and west are the permanent lagoons and waterways of the Okavango.

Moremi Game Reserve supports the most diverse habitat and animal populations in Botswana, with possible sightings of wild dogs, cheetahs, and leopards as well as lions, elephants, buffalos, hippos, giraffe, hyena, zebra, kudu, lechwe, tsessebe, and Sable and Roan antelope. The rare Sitatunga antelope lives in the papyrus banks of the waterways. Bird watching is excellent throughout the year, with motorboat excursions to the heronries on Gadikwe. The reserve is home to over 400 species of birds and a great variety of mammals, plants, fish, and reptile species that have successfully adapted to the fertile swamps.



Your home for the next three nights is Camp Xakanaxa, is one of the few Okavango lodges which can offer comprehensive year-round boating trips, as well as extensive nature drives into good wildlife country, conducted by a team of experienced, professional wildlife guides. The camp consists of twelve spacious all-canvas, classic Meru-style luxury safari tents with en-suite facilities, fully equipped and tastefully furnished. The dining room is open fronted with reed walls and a thatched roof and has a fully stocked bar. Wholesome meals, candle-lit dinners and a selection of fine wines will more than satisfy. Personalized service and high standards make Camp Xakanaxa the essence of a classic tented camp.

Overnights at CAMP XAKANAXA (All Meals Daily)
<http://www.desertdelta.com/botswana-safari-lodges/camp-xakanaxa-okavango.html>.



DAYS 9/10/11~ FRIDAY/SATURDAY/ SUNDAY~ MARCH 21/22/23

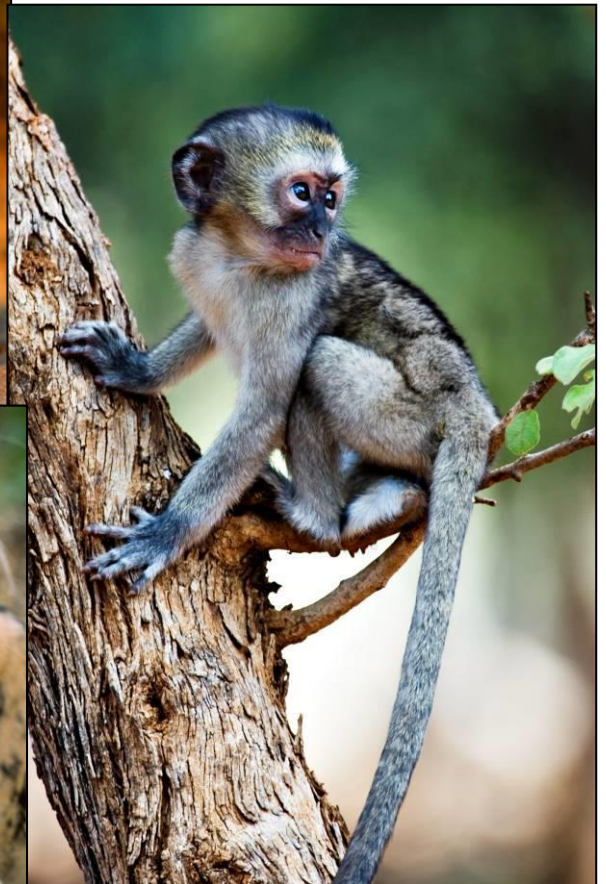
CAMP XAKANAXA/KASANE/CHOBE NATIONAL PARK~ CHOBE GAME LODGE

Today you fly to Kasane. Upon arrival, you will be met and transferred to Chobe National Park, where you will spend the next two days on wildlife viewing and boat activities. Chobe is world-renowned for its wildlife. It is the second-largest park in Botswana, and the first declared a national park. Your destination will be the Chobe River, and your accommodation will be close to the town of Kasane, the heart of a road network that gives access to Zambia, Zimbabwe, and to the Caprivi Strip of Namibia. The park covers a wide variety of ecosystems; riverine forest, floodplain, periodic marsh, mopane, miombo woodland, and a few rocky outcrops. Such a diversity of habitats implies a wide variety of wildlife, which ranges from water animals such as hippos, crocodiles, otters, and fish, to forest and dry land species such as elephants, and buffalo, giraffes, zebra, and eland. In all areas, predators abound – lion, leopard, cheetah, and hyena are plentiful. In the open grasslands of the pans, one can find the rare oribi and occasional reedbuck.



Puku, an antelope associated with this park, can often be seen in herds around the edge of the river. The Chobe River is also well known for its magnificent bird viewing, with over 400 different species, ranging from eagles to kingfishers and from Marabou Storks to bee-eaters. Occasionally, Carmine Bee-eaters build colonies in the sandbanks of the floodplains where they nest in their thousands. There are over 90 species of fish in the local waters, and if you are so inclined, you might wish to partake in fishing.

A major feature of Chobe National Park is its overabundance of elephants, often seen at the riverfront, bathing in the water. Vast numbers of elephants come down to drink in the late afternoons and it is possible to see hundreds of these magnificent animals in a two-hour wildlife drive. The Chobe elephant comprises part of what is probably the largest surviving continuous elephant population, covering most of northern Botswana and northwestern Zimbabwe. Botswana's elephant population is currently estimated at around 120,000, which has built up steadily from a few thousand in the early 1900s. These elephants are migratory, making seasonal movements of up to 124 miles from the Chobe and Linyanti rivers, where they concentrate in the dry season, to the pans in the southeast of the park, to which they disperse in the rains. The elephants in this area have the distinction of being the largest in body size of all living elephants, though the ivory is brittle, and you will not see many huge tuskers among these gentle giants.



You will stay at the legendary Chobe Game Lodge, the only lodge located within the reserve, which served as the honeymoon spot for Elizabeth Taylor and Richard Burton's second marriage. The lodge is beautiful with yellow-gold stucco décor, open and colonial in style. The rooms have electricity, air conditioning, a minibar, and balconies. Relax in the luxury of your bedrooms affording breathtaking views of the Chobe River or cool down in the swimming pool.

Overnights at the CHOBE GAME LODGE (All Meals Daily)
<https://www.chobegamelodge.com/>



DAY 12~MONDAY~ MARCH 24

CHOBE GAME LODGE/KASANE/JOHANNESBURG/EN ROUTE

Enjoy a last activity this morning and a hearty breakfast before flying back to Johannesburg via Kasane where you connect with your flight back home. (B, Meals Aloft)

DAY 13~ TUESDAY~ MARCH 25

USA

Today you land back home, bringing with you the memories of all the wonderful sights of Southern Africa. (Meals Aloft)



OPTIONAL POST-EXTENSION TO VICTORIA FALLS, ZIMBABWE



DAYS 12/13/14~ MONDAY/TUESDAY/WEDNESDAY ~ MARCH 24/25/26

CHOBE GAME LODGE/KASANE/VICTORIA FALLS, ZIMBABWE

Head to Victoria Falls, Zimbabwe, and the mighty Victoria Falls. At more than twice the size of Niagara Falls it's no surprise that Victoria Falls are among the Seven Wonders of the World. Mosi-oa-Tunya (*The Smoke that Thunders*,) derived from the towering column of spray when the Zambezi River runs high, is the name that Zimbabwe's local people have given to this awesome natural phenomenon. The name is probably more appropriate and descriptive than "Victoria", which has a far too calm and composed ring to it to do justice to the masses of thundering, swirling water of these spectacular falls. But all Dr. David Livingstone probably thought of when he named the falls after his Queen in 1855 was his royal duty. Five separate falls make up this incredible spectacle that plunges more than 300 feet into a sheer-sided chasm which separates Zimbabwe from Zambia. The awe-inspiring abyss is spanned by a 1905 Edwardian bridge which links the two countries, and many adventurers now, use to bungee jump. The masses of water plunging down the falls and into the gorge below originate from the mighty Zambezi River that meanders through more than 1,677 miles of African countryside.



Your visit will include a tour of the falls on the Zimbabwe side. An afternoon sundowner cruise on a private boat will be a highlight as you glide along the Zambezi River, watching hippos snort, elephants drink on the riverbank, monkeys jump from branch to branch, birds fly overhead or pose for a photograph on the branches, and much more. Enjoy your gin and tonic, cool beer, or drink of choice, and see a panoramic sunset as the sun dips below the horizon, painting the whole area in unbelievable colors of brilliant reds, yellows, purples, and mauves.



The Elephant Camp is a luxury and intimate lodge under canvas built in a private concession bounded by the Masuwe River, and the Zambezi Gorges, some six miles from the town of Victoria Falls. Elephant Camp enjoys the breathtaking view of the gorges which separate Zimbabwe and Zambia. The camp offers exclusive suite accommodation in 12 luxury tents. All suites are gorge facing and have private viewing deck and plunge pool, private lounge area, air-conditioning and fans, bath, inside and outside shower, mini bar and tea/coffee stations, 220V main electricity. All suites are mosquito proofed with mosquito nets. Elephant Camp is home to four orphaned elephants and all guests staying at the camp will have an opportunity to meet and interact with the Wild Horizons elephants.

Overnights at the ELEPHANT CAMP. (All Meals Daily) www.theelephantcamp.com

DAY 15~ THURSDAY~ MARCH 27

VICTORIA FALLS/JOHANNESBURG/EN ROUTE

Last chance to photograph the incredible falls before transferring to the airport for your flight to Johannesburg where you connect with your overnight flight to the USA. (B, Meals Aloft)



DAY 16~ FRIDAY~ MARCH 28

USA

This morning you land back home, bringing with you the memories of all the wonderful sights of Southern Africa. (Meals Aloft)



OPTIONAL PRE-EXTENSION TO CAPE TOWN, SOUTH AFRICA



DAY 1~SUNDAY~ MARCH 9

USA/EN ROUTE

Your journey begins as you board your overnight flight to Cape Town via Atlanta. (Meals Aloft)

DAY 2~ MONDAY~ MARCH 10

JOHANNESBURG/CAPE TOWN

Upon arrival at the Johannesburg International Airport, you will connect with your flight to Cape Town, South Africa's "Mother City". Upon arrival, you will be met and escorted to your hotel. The provincial capital, Cape Town, is a sophisticated city with plenty to see and do, particularly around the Victoria and Alfred Waterfront area, where delightful buildings of the Cape Dutch and Victorian-era architecture have been restored as shops, restaurants, museums, and pubs, while the busy water traffic of the docks goes on unabated.

The perfect blend of heritage and modern luxury epitomizes the Taj Cape Town. Located in the city center, the hotel is steps from the popular area of St George's Mall, which is a vibrant pedestrian precinct with wonderful pavement cafés and bars. You'll be amidst many significant historic buildings, which include the St. George's Cathedral, the House of Parliament, the Castle of Good Hope, the Company's Gardens, and many of Cape Town's national museums. All rooms are beautifully decorated and complete with



every exclusive amenity. The Taj Cape Town has two spectacular restaurants - Mint and The Bombay Brasserie - and unforgettable seafood, champagne, and an oyster bar known as The Twankey. The Jiva Grande Spa combines the wisdom and heritage of the respected Asian and Indian philosophies, surrounding wellness and wellbeing, to create an unrivaled treatment experience. The hotel prides itself on providing unobtrusive and efficient service from a staff that genuinely delights in making guests feel at home. Overnight at THE TAJ CAPE TOWN HOTEL. (No Meals) <https://taj.tajhotels.com/en-in/taj-cape-town>

DAY 3~ TUESDAY~ MARCH 11

CAPE TOWN/CAPE PENINSULA

Your luxury motor coach takes you on a breathtaking coastal drive to the Cape of Good Hope, surrounded by spectacular mountains, rugged shorelines, and the blue sea below. See Devil's Peak, Lion's Head, Table Mountain, and the Twelve Apostles. Pass quaint seaside towns as you continue to Cape Point, where the stormy waters of the Atlantic meet up with the calm waters of the Indian Ocean. At Cape Point, climb the steps or ride a funicular to the top where you can explore a lighthouse, enjoy the views, or even indulge in a bit of shopping. Take a close look at the ocean, where you may see southern right whales in the spring and early summer as well as dolphins and a variety of seabirds. You will also have the chance to explore the Cape Point Nature Reserve, which is host to approximately half of the 2,700 species of indigenous plants contained in the Cape Peninsula. Look for the distinctive orange found in leucospermums, one of the rarest types of proteas – the mimites, marvel at the helicrysums and pelarganium calcullums, and enjoy the ericas, phenacomias, and fine bush which the Dutch called “fynbos.” There are 250 species of birds in the reserve, ranging from ostriches to minuscule sunbirds. Caracal, chacma baboon, a wide variety of buck and various other mammal species may be seen, including Cape Mountain zebra and the bontebok which is endemic to this part of the world. The baboons feed occasionally on marine foods which they garner at low tide. At Olifants Bay, look for Oystercatchers, and enjoy some superb birding.



Enjoy lunch at a local restaurant, and continue to Boulders Beach where the African (Jackass) Penguins can be seen – also known as the Black-footed Penguins. These flightless seabirds are found only on the coast of Southern Africa and the only penguins found on this continent. Enjoy a delightful walk on a specially-built platform onto the little sheltered beach where they nest among the rocks, and "waddle" up and down into and out of the sea. Since the penguins are accustomed to human presence you can safely get within a few feet of them as you stand on the platform, and it is sometimes possible to view them nesting behind rocks and bushes.



Return to Cape Town in the evening, where you have another chance to discover one of the numerous restaurants that Cape Town has to offer.

Overnight at THE TAJ CAPE TOWN HOTEL. (B,L)

DAY 4~WEDNESDAY~ MARCH 12

CAPE TOWN: CAPE MALAY

Your first stop for the day is Cape Malay Quarter, or 'Bo-Kaap,' which sprawls along the slopes of Signal Hill, bordering Cape Town, presenting a scenario of enduring historic and cultural significance. It's certainly worth taking the time to explore the area when you come to Cape Town. Bo-Kaap's attractive, brightly colored, flat-roofed houses, decorative mosques, and the sound of the muezzin calling over the city streets have remained relatively undisturbed for all this time. The major threat facing this attractive area is now not forced removals, but gentrification.



Here, you will have a hands-on, practical lesson on how to cook like a real Cape Malay 'Auntie!' Learn how to fold samosas and mix masala for that perfect pot of Cape Malay curry! A local woman will host you at her home, where you will not only learn secret cooking techniques but also get an insight into daily life in the Bo-Kaap. The workshop ends with lunch where you can share your experiences with the group whilst indulging in a mouth-watering traditional meal.

Overnight at THE TAJ CAPE TOWN HOTEL. (B,L)



DAY 5~THURSDAY~ MARCH 13

CAPE TOWN: TABLE MOUNTAIN/WINELANDS

Get a feel of what Cape Town is all about by taking the cable car to the top of Table Mountain, the signature of this city. This tour is dependent on the wind factor, as well as the clouds. Clouds often cover this flat-topped mountain, which rises to 3,563 feet above sea level and the locals affectionately say it's a white tablecloth. Legend has it that a retired pirate, on climbing the mountain, met up with the devil. In order to preserve his soul, the pirate challenged the devil in a smoking contest. So, they stoked up their pipes and have been smoking ever since. For centuries Table Mountain has been a guiding beacon to mariners rounding the Cape of Southern Africa.



Sir Francis Drake described it as "the most-stately thing and the fairest cape we saw in the whole circumference of the earth." Despite its formidable appearance, it is possible to hike up Table Mountain. The first recorded ascent was in 1503 by the Portuguese navigator Antonio da Saldanha who, confused by the Cape Peninsula geography, climbed to the summit via the frontal cleft, now known as Platteklip Gorge. For nature lovers, the birding is awesome, and the wildflowers include agapanthus, watsonias, and red nerines which poke out from rock crevices amid a scrub of ericas and gnarled proteas. More than 1400 species of flowering plants have been recorded on the mountain, which makes it a spectacular sight in the spring. Cute guinea pig-like creatures known as rock dassies, or hyraxes, (genetically, the closest living relatives to elephants) scuttle everywhere. They are not afraid and scamper among the tourists seeking to be fed.



Continue to the winelands region, situated below the spectacular Boland Mountains and only 50 minutes from the city. Discover the internationally acclaimed vineyards of Stellenbosch, Paarl, and Franschhoek on the Western Cape, along a most scenic route. You will visit the historic estate of Boschendal, which has some of the most brilliantly preserved Cape Dutch buildings in the Cape, and a collection of priceless period furniture. You will also visit Franschhoek with its lovely antique shops and gardens, nestled in the "Valley of the Huguenots," where the French first settled in 1688. All of the wine estates you will be visiting in the region offer tastings and cellar tours, and you will enjoy lunch in one of them. This afternoon, explore the university town of Stellenbosch, the oldest town in South Africa after Cape Town, undoubtedly the most scenic and historically preserved town in Southern Africa. Oak-lined streets next to water furrows compliment the many fine examples of elegant Cape Dutch, Victorian and Georgian architecture - all part of this unique "Town of Oaks."

Overnight at THE TAJ CAPE TOWN HOTEL. (B,L)

DAY 6~FRIDAY~ MARCH 14 CAPE TOWN/JOHANNESBURG

This morning is devoted to Kirstenbosch Botanical Gardens, arguably one of the most beautiful gardens in the world. Founded in 1913, Kirstenbosch lies on the eastern slopes of Table Mountain and consists of landscaped gardens of indigenous plants and trees, watered by the Liesbeek River, as well as natural forest that extend up to the lower slopes. Kirstenbosch covers an area of 1,383 acres, 148 of which are cultivated; the remainder is a natural flora reserve. It is a living display featuring 9,000 of the estimated 20,000 species of indigenous South African flora, and close to 50% of the peninsula's floral wealth. In the cultivated area, related plants are grouped together and radiate from the central lawns like the spokes of a wheel. Among the interesting sections here are the Cycad Amphitheatre, which hosts most species of these "living fossils" found in southern Africa; the famed Protea Garden on the higher slopes, with its profuse growth of silver trees (*Leucadendron argenteum*); the JV Mathews Rock Garden (named after the first curator) containing succulents of the genera *Crassula*, *Aloe*,



Lampranthus and Euphorbia; the Erica Garden and the Pelargonium Koppie. Two streams cut through Kirstenbosch, both laced with besembos, red alder, and hard fern. Of historical interest is an avenue of camphor trees and fig trees planted by Cecil Rhodes in 1898, and a small section of wild almond (*Brabejum stellatifolium*) hedge planted by Dutch settler Jan van Riebeeck in 1660. Birds of all sorts can be seen here as well – Dusky and Paradise Flycatchers, sunbirds, Klaas's cuckoos, bulbuls, pigeons, brilliant green and red Cape Sugarbirds (which pollinate the flowers), guinea fowls, and the Cape Batis.

Afterwards, fly to Johannesburg where you meet up with the group arriving from the US this evening. Overnight at the D'OREALE GRANDE. (B)



Photo Credits

© Ron Magill, © Desert & Delta Safaris © D'Oreale Grande, © Marcus /Fotolia.com, ©Riaanvdb, ©Taj Cape Town, ©South Africa Tourism, ©Spoto, © Ottoduplessis, © Agaliza, © Neal Cooper, © Bennymarty @Graham Johansson



INCLUSIONS

- Flights between Johannesburg/Maun and Kasane/Johannesburg.
- All flights between the camps.
- Flight between Cape Town and Johannesburg on the pre-extension.
- Flight between Victoria Falls and Johannesburg on the post extension.
- Superior accommodations throughout as indicated or similar.
- All meals while on safari. Other meals as specified in itinerary.
- All wildlife viewing by 4X4 open vehicles, driven by professional rangers.
- Specialist guide, Nic Proust will accompany the group with a minimum of 10 travelers.
- A Host from IU Travels will escort the group with 10 travelers on both main and extension programs.
- Laundry and all local beverages during safari in Botswana except for Champagne and imported spirits.
- Complimentary bottled water in vehicles throughout.
- All applicable hotel and lodge taxes and gratuities for baggage handling.
- All park entry fees and sightseeing as specified.
- Complimentary water bottle.
- Complimentary emergency evacuation insurance.

EXCLUSIONS

- International airfare from USA. If you require assistance with air arrangements, contact Classic Escapes.
- Passport and visa fees and service charges for obtaining visas. US citizens do not require a visa for traveling to South Africa or Botswana. A visa is required for Zimbabwe, and you will get this at the border after leaving Botswana.
- Gratuities to driver/guides and other conveyance attendants. *Gratuities should only be given as a reward for exceptional service and are at your discretion. We estimate \$20 per person/per day for the specialist guide. \$15 per person/per day for the drivers on land and during the safari. \$15 per person/per day for the camp staff. \$5 per person for each arrival and departure transfer from the airport/hotel. These are daily per service estimates and an exact tipping chart will be detailed on your final itinerary.*
- Excess baggage charges levied by airlines.
- Meals and beverages, other than specified.
- Laundry, other than specified and other items of a personal nature.
- Personal and baggage insurance.
- Cost for anything not specifically mentioned in the listing above.

Please note the itinerary sequence is correct at the time of writing, but is subject to change.



SAFARI AIR LUGGAGE RESTRICTIONS

It is of vital importance that all guests traveling to Botswana strictly adhere to the luggage limits and regulations as stipulated below.

LUGGAGE WEIGHT LIMIT PER PERSON *	44.092 Lbs. (20 kg's) – total weight inclusive of luggage and hand luggage/camera equipment.
LUGGAGE TYPE	Soft sided bags – no hard-shelled bags, wheels or frames allowed.
LUGGAGE DIMENSIONS**	10 inches wide x 12 inches high x 24 inches long.

Please note:

*This is the total weight including both luggage and hand luggage/camera equipment. This is a safety requirement due to the sensitive weight and balance checks on the small aircraft and must be strictly adhered to. Travelers who require additional luggage must pre-book and pay for this on confirmation of the reservation. We would like to remind you that complimentary laundry services are available in all camps and lodges.

**Please keep in mind that the baggage compartments on most of the light aircraft are only 25cm (10 inches) high, so the pilots must have the ability to manipulate the bag into the compartment.



**NO WHEELED OR
PULL HANDCASES**



NO HARD BODY CASES



SOFT SIDED BAGS ONLY

HANDLING OF INCORRECT LUGGAGE ON ARRIVAL

Guests arriving in Botswana, who have not adhered to the luggage guidelines as per above, will NOT be able to depart on the scheduled charter. They will be given the option to book a private charter at additional costs to be paid directly prior to departure and subject to the availability of aircraft at the time of booking these flights. No refunds on the costs paid for scheduled charters which were missed due to their incorrect luggage and or accommodation not provided due to this delay will be provided. In all cases, additional arrangements for transfers, overnight accommodation in Maun or Kasane and meals are for the guests own account.

ASSISTANCE WITH BAGGAGE PRIOR TO ARRIVAL

Should guests be travelling with the incorrect luggage and require assistance with storage (which we offer at no additional cost) or transportation to their point of departure from Botswana (transportation costs apply), this can be arranged provided this has been brought to our attention prior to their arrival in Botswana, preferably at the time of final booking confirmation.

THINGS YOU NEED TO KNOW ABOUT SOUTHERN AFRICA

Participants:

- Must be able to climb in and out of safari 4 x 4 vehicles, small aircrafts and boats/mokoros unassisted. People need to be willing to rotate seats.
- Must be able to stand and/or walk moderate distances when visiting villages, towns, or other sites. This walking will be on uneven ground or uphill, often at altitudes many people are not used to.
- Should generally be in good health and prepared to travel in locations without medical facilities.

In general, this trip requires:

- Flexibility and good humor – unexpected changes and/or glitches will occur
- A spirit of adventure and curiosity
- Interest in and willingness to appreciate a destination with uneven infrastructure and a bending definition of comfort. That being said, some locations are nestled in absolute luxury where pampering is the norm.

Air Schedules

The cost of your program does not include international airfare. If you require assistance, please contact Classic Escapes at 718-280-5002 and we will happily provide air quotes to you. You may make your own international air arrangements, but please ensure you arrive/depart on the correct dates. Contact your Journey Manager at Classic Escapes to verify the dates to ensure there are no errors. **The start and the end city for this program is Johannesburg, South Africa. The pre-extension begins in Cape Town.**

Upon registration, you must provide your full legal name as it appears on your passport. In the event an airline ticket is issued with incorrect information you have provided, you will be responsible for charges associated with reissuing the ticket.



YOUR JOURNEY AT A GLANCE

INCLUDING: JOHANNESBURG, SOUTH AFRICA; MAUN, MAKGADIKGADI PAN NATIONAL PARK & MOREMI GAME RESERVE, BOTSWANA; & CHOBE NATIONAL PARK. POST EXTENSION TO VICTORIA FALLS, ZIMBABWE. PRE-EXTENSION TO CAPE TOWN, SOUTH AFRICA.

SPONSORED BY: IU TRAVELS

ESCORTED BY: A HOST FROM IU TRAVELS

DATES: MARCH 13 TO 25, 2025

COST: PER PERSON, DOUBLE OCCUPANCY	MAIN PROGRAM BASED ON 15 TRAVELERS	POST-EXTENSION TO VICTORIA FALLS BASED ON 15 TRAVELERS	PRE -EXTENSION TO CAPE TOWN BASED ON 15 TRAVELERS
LAND PACKAGE INCLUDING ALL AIR WITHIN AFRICA	\$11,995 PER PERSON	\$3,995 PER PERSON	\$3,295 PER PERSON
SINGLE ROOM SUPPLEMENT*	\$4,995 PER PERSON, ADDITIONAL	\$1,995 PER PERSON, ADDITIONAL	\$995 PER PERSON, ADDITIONAL

**SINGLE SUPPLEMENT: RATE IS VALID FOR FIRST TWO SINGLE ROOMS BOOKED. IF MORE THAN TWO SINGLE ROOMS, ADDITIONAL SUPPLEMENT MAY APPLY. SINGLES ARE ASSIGNED ON A FIRST COME/FIRST SERVE BASIS.*

INTERNATIONAL AIR ARRANGEMENTS: The cost of your program does not include international airfare. If you require assistance, please contact Classic Escapes at 718-280-5002 and we will happily provide air quotes to you. You may make your own international air arrangements, but please ensure you arrive/depart on the correct dates. Contact your Journey Manager at Classic Escapes to verify the dates to ensure there are no errors. **The start and the end city for this program is Johannesburg, South Africa.**



CONDITIONS OF TRAVEL:

The purchase of your travel booking constitutes a contractual agreement between the traveler(s), customer(s), and/or purchaser(s) (collectively as "**You**" and "**Traveler**"), and Classic Escapes ("**Classic Escapes**", "**We**", "**Us**") pursuant to the following terms and conditions ("**Terms**", "**Agreement**"):

REGISTRATION & PAYMENTS

HOW TO BOOK: Fill out and sign the enclosed reservation form and send it, along with the relevant deposit as shown below, to: CLASSIC ESCAPES, 191 W Poplar Street, Floral Park, NY 11001. Upon receipt of your signed reservation form and deposit, we will, subject to availability, reserve your spot on the tour. You may consider your booking confirmed when you receive a confirmation notice and invoice from us.

DEPOSIT AND FINAL PAYMENT: You will be required to pay the following per person deposits when booking. Those amounts are:

- \$2,400 for the main trip
- \$800 for the post extension
- \$700 for the pre-extension

All deposits are subject to the Cancellation policy herein. Final payment is required no less than 95 days prior to departure **December 8, 2024**, unless otherwise stated. Some airfares or services must be paid in full at the time of booking. Payments may be made by check or with credit card (American Express, Visa, MasterCard, or Discover.) Conditioned on receipt of final payment in full, all final documents and air tickets will be sent to you approximately two weeks prior to departure.

CREDIT CARD TRANSACTIONS: If for any reason, any travel service provider is unable to provide the services for which you have contracted, your remedy lies against the provider, and not against Classic Escapes, and in the event that payment has been made to Classic Escapes by credit card, you agree that you will not seek to chargeback your payment to Classic Escapes. If the credit card is passed through to the travel service provider and you seek to chargeback your payment from the provider, you agree to be held liable and indemnify Classic Escapes against this chargeback from the provider, including without limitation any air debit memos charged to Classic Escapes. If the credit card is declined, you guarantee that you will settle any amounts owing to Classic Escapes via money order or cash immediately. Except in cases of fraud, you agree not to file any dispute with your bank or credit card company to avoid or violate any booking terms and conditions of Classic Escapes or its suppliers, including cancellations or changes of itinerary or arrangements for reasons beyond the control of Classic Escapes or its suppliers. If you attempt to chargeback, reverse or recollect a previously authorized trip payment, Classic Escapes reserves the right to collect all additional costs, fees and expenses associated with such chargeback, reversal or recollection, including, without limitation, attorney fees.

IMPORTANT CONDITIONS: Prices are subject to increase prior to the time you make full payment. Prices are not subject to increase after you make full payment, except for charges resulting from increases in government-imposed taxes or fees. By signing the reservation form, you expressly acknowledge your acceptance of these conditions (i.e., increases before full payment and increases attributable to government-imposed taxes or fees after full payment will be your responsibility) applicable to your purchase.

RATES: Rates are based on the minimum number of guests outlined in this document, plus airfare costs, currency exchange rates and other factors and are subject to change. Though it is rare for Classic Escapes to make a price adjustment after promotion of an itinerary, we do reserve the right to assess a surcharge if the minimum is not met, or if increases are forced upon us by airlines or other partners or because of changes in currency exchange rates.

ADDITIONAL FEES: Additional taxes and surcharges that cannot be pre-collected may be charged locally. Cost of passport and visa fees and service charges for obtaining visa fees; excess baggage charges levied by airlines; laundry and other items of personal nature; optional travel insurance policy(s); or any other costs incurred that cannot be pre-collected are NOT included and are the sole responsibility of the Traveler.

SINGLE SUPPLEMENT: The quoted rate is valid for the first two single rooms booked and on a first-come, first-served basis. If more than two single rooms are needed, an additional supplement may apply. Single accommodations are not guaranteed but will be provided at additional cost if available (see your "Journey at a Glance section" for cost.) The single room supplement pays for privacy, not better accommodations. For passengers who are traveling alone and wish to share a room with another tour member, we will do our best to provide a roommate. However, if this is not possible, you will be required to pay the single room supplement prior to your departure from the USA.

GRATUITIES, ENTRANCE FEES & TAXES: Gratuities for baggage handling, service charges and taxes imposed by hotels, and entrance fees to all points of interest as outlined in the itinerary are included in the final cost. U.S. and foreign airport taxes are included in air costs. Tips to drivers and specialist guide(s) are **not** included and are the sole responsibility of the Traveler.

CANCELLATIONS, DEVIATIONS & CHANGES

TRAVEL INSURANCE: We recommend travel insurance. Travel insurance can provide financial reimbursement should the unexpected occur.

CANCELLATION: Please be aware that most travel bookings are non-refundable and cancelled bookings will incur charges. These charges can be up to 100% of the cost of the booking, regardless of whether travel has commenced. Where we incur any liability for a cancellation fee or charge for any booking that you cancel, you agree to indemnify us for the amount of that fee or charge. Cancellations are only effective upon receipt of written notification. The following per-person fees are applicable; however, depending on the specific itinerary or other factors, we may require a non-refundable deposit:

- Up to 6 months prior to departure (September 14, 2024), \$300 per person administrative fee, plus \$500 non-refundable deposit given to overseas suppliers.
- 179 days to 96 days prior to departure (September 15 to December 7, 2024), \$300 per person administrative fee, plus \$1,500 non-refundable deposits given to suppliers.
- 95 days to 76 days prior to departure (December 8 to December 27, 2024), deposit is forfeited.
- 75 days to 60 days prior to departure (December 28, 2024 to January 12, 2025), 25% refund is possible.
- 59 days or less prior to departure (January 13, 2025), no refund is possible.

These cancellation fees are also in addition to any fees imposed by airlines.

REFUNDS: While Classic Escapes uses its best endeavors to ensure that all anticipated accommodation is available as planned, there is no claim of any nature whatsoever against Classic Escapes for a refund, in whole or in part, if any accommodation or excursion is unavailable and a reasonable alternative is not found, or if the Traveler is unable to use any service provided in the itinerary.

CHANGES: Once your tour is reserved, changes to the itinerary are possible subject to the availability of air or land space at the time of your request. Should there be any change fees imposed by any airlines or ground operators, or additional costs incurred due to the availability of any space, these costs will be invoiced to you and you will be responsible for payment thereof.

SPECIAL ARRANGEMENTS: Should you wish to make additional travel plans, including specially arranged pre- or post-tour extensions different than those offered in conjunction with your tour, a service charge of \$150 per person (over and above the cost of the services required) will be assessed.

DOCUMENTS

PASSPORTS: All individuals departing from the United States of America must be in possession of a valid passport. Please check that your passport is valid for at least 6 months beyond your intended return date. It is your responsibility to ensure that you have valid travel documentation, including but not limited to passports and visas, which meet the requirements of immigration and other government authorities at every destination. You are responsible for confirming with the United States Department of State or the representative government agency of the country to which you are traveling to confirm the requirements for visas and/or other requirements for admission to your destination. Any fines, penalties, payments, or expenditures incurred as a result of such documents not meeting the requirements of those authorities will be your sole responsibility.

REAL ID: Beginning October 1, 2021, if you plan to use your state-issued ID or license to fly within the U.S., it is your responsibility to make sure it is REAL ID compliant. If you are not sure if your ID complies, please check with your local state Department of Motor Vehicles or visit www.tsa.gov/real-id.

TRAVEL DOCUMENTS: It is the responsibility of each Traveler to obtain and carry a valid passport, visa(s), and all other documents required by applicable government regulations. When traveling domestically or internationally, the U.S. Transportation Security Administration (TSA) and U.S. Department of Homeland Security (DHS) advise that everyone carry acceptable identification in order to board a flight. Acceptable identification can be found at <http://www.tsa.gov/traveler-information/acceptable-ids>. The name, date of birth and gender that appears on the identification card must exactly match the same such data that is listed on airline ticket(s) and booking records. You acknowledge any failure to strictly comply with these requirements may result in denied boarding or an undue delay at an airport security checkpoint causing Traveler to miss flight(s), and subsequent scheduled travel bookings on cruises and tours.

Travel documents include, without limitation, airline tickets, hotel vouchers, tour vouchers, or any other document (whether in electronic form or otherwise) used to confirm an arrangement with a service provider. Travel documents may be subject to certain

conditions and/or restrictions such as, but not limited to, being non-refundable, non-date-changeable, and subject to cancellation and/or amendment fees. Travel documents cannot be transferred to another person to use. All airline tickets must be issued in the name of the passport/photo identity holder. An incorrect name on a booking may result in an inability to use that booking and the booking being cancelled. Any errors in names, dates, and timings may result in an inability to use that booking and the booking being cancelled. Any errors in names, dates, and timings on your documentation will be your responsibility if we are not advised at the time of booking. Please reconfirm your flights at least 24 hours prior to departure.

PRE-DEPARTURE INFORMATION: Upon receipt of your registration and deposit, we will send you an electronic pre-departure packet containing all the information you need to prepare for your tour, including the complete itinerary, packing checklist, required documents, insurance information, etc.

FINAL DOCUMENTS: Electronic final documents and air e-tickets will be sent to you approximately two weeks prior to departure, provided all monies have been paid in full.

TRANSPORTATION

AIR TRANSPORTATION: Your program does not include international airfare. If you require assistance, contact Classic Escapes.

FREQUENT FLYER MILEAGE: Check on the airline's website to enquire who their partners are. Obtain frequent flyer mileage on any of these carriers. Present your frequent flyer card for all flight check-ins and keep the boarding passes until you receive a statement with the mileage credit.

TRANSFERS: Roundtrip airport transfers are included in the tour for guests arriving on group flights. If travelers make their own air arrangements, they will be subject to extra transfer fees.

FLIGHT CONFIRMATION: We strongly suggest that you reconfirm exact flight times with the carrier prior to departure. Air travelers are required to check in at least 2 hours prior to departure time for domestic flights and 3 hours for international flights and must report to the gate at least 30 minutes prior to departure time. Failure to comply may result in the loss of the seat to another passenger.

HAZARDOUS MATERIALS: Federal law prohibits passengers from bringing hazardous materials on the aircraft. Federal law forbids the carriage of hazardous materials aboard aircraft in the passenger's luggage or on the passenger's person. A violation can result in five years' imprisonment and penalties of \$250,000 or more (49 U.S.C. 5124). Hazardous materials include explosives, compressed gases, flammable liquids and solids, oxidizers, poisons, corrosives and radioactive materials. Examples: Paints, lighter fluid, fireworks, tear gases, oxygen bottles, and radiopharmaceuticals. There are special exceptions for small quantities (up to 70 ounces total) of medicinal and toilet articles carried in the passenger's luggage and certain smoking materials carried on the passenger's person. For further information, each passenger should contact the relevant airline representative(s) on their itinerary. Restrictions on hazardous materials are listed <http://www.tsa.gov/traveler-information/prohibited-items>.

INSECTICIDE NOTICE: Some countries require insecticide spraying of aircraft prior to a flight or while you are on the aircraft. We recommend that you refer to the Department of Transportation's list of airports in countries that require airlines to treat the passenger cabin with insecticides prior to the flight or while on the aircraft available at <https://www.dot.gov/office-policy/aviation-policy/aircraft-disinsection-requirements>.

BAGGAGE & FEES: Additional fees for baggage may apply. Please contact your airline or refer to its website for detailed information regarding its checked baggage policies. On average, international flights from the USA allow one piece of checked luggage, not exceeding 50 pounds, plus a carry-on piece not exceeding 15 pounds; however, we always recommend that you check your airline's policy just before departure, as luggage limitations are always subject to change. There may also be luggage and weight restrictions for your destination and that information will be forwarded to you with your pre-departure material and also be listed on your final documents.

LUGGAGE ALLOWANCES ON INTERNAL FLIGHTS: Your journey includes internal flights aboard light aircraft which are designed with a maximum luggage allowance; this is closely monitored by the flight operators for safety reasons. You are allowed one carry-on and one piece of luggage, total weight: **44.092 lbs. (20 kgs.)** per person including the camera equipment. Further, only soft-sided duffel bags are accepted, **without wheels**, as they stow best in vehicles and airplanes with limited space.

PERSONAL WEIGHT ALLOWANCES ON INTERNAL FLIGHTS: Your journey includes internal flights aboard light aircraft which are designed with a maximum body weight and luggage allowance; this is closely monitored by the flight operators for safety reasons. If your personal weight exceeds **85 kilos (187 lbs.)** it may be necessary to purchase an extra seat and your Classic Escapes Journey Manager will contact you should this be necessary.

AIRLINE CLAUSE: The airlines concerned are not to be held liable for any act, omission or event during the time the passengers are not on board their planes or conveyance. The passengers' tickets in use by the airline or by other carriers concerned when issued shall constitute the sole contract between the airlines and the purchaser of these tickets and/or passengers.

DELAYS: We cannot be held liable for any delays or additional costs incurred as a result of airlines not running to schedule. Any additional land or air fees imposed on account of airline delays will be borne by the traveler.

TRIP DETAILS

ACCOMMODATIONS: You will marvel at the wonderful accommodations provided throughout your tour. All rooms have private bathroom facilities and air conditioning and/or fans, unless otherwise specified. All rates are based on double occupancy. Most rooms are twin-bedded, but king-size beds are occasionally available and should be requested in advance. Accommodations listed in this itinerary are correct at time of writing, but on rare occasions may be substituted for a different property of comparable quality.

MEALS: All meals as specified in the itinerary. Please notify us if you have special dietary needs or requests, and we will do our best to accommodate.

WATER: It is always advisable to drink bottled and/or filtered water when traveling overseas. Safe drinking water will be provided to travelers free of charge in the vehicles and during meals.

PHOTOGRAPHY: The Company reserves the right without further notice to make use of any photograph or video taken on the tour by our photographers without payment or permission. We guarantee that no photographs of a compromising nature will be used.

GUIDES: If one of Classic Escapes' guides are unable to take a trip due to circumstances out of our control (i.e., illness, etc.), we reserve the right to substitute with another guide.

TOUR ITINERARY: To the best of our knowledge the itinerary is correct at the time of printing. We cannot be held responsible for any inaccuracies or changes that may occur after printing.

HEALTH AND SPECIAL REQUIREMENTS: You must have the proper immunizations and health screenings and required documentation of such immunizations and screenings before travel. It is your responsibility to ensure you are aware of any health requirements, health advisories, or health travel restrictions applicable to your travel destinations and to ensure that you carry all necessary vaccination documentation. Classic Escapes is not responsible for providing you with this information. Travel carriers and local authorities at travel destinations may require specific testing prior to boarding and/or upon arrival at your destination, including, but not limited to, a temperature check as a result of the COVID-19 pandemic. You may be denied entry onto your carrier and/or entry upon arrival at your destination or be required to self-quarantine at your destination and upon your return to the United States. You must comply with local government regulations. Any additional costs are your responsibility. Check the State Department Web site <http://travel.state.gov>, for relevant information relating to travel to specific destinations, and the Center for Disease Control <http://wwwnc.cdc.gov/travel/> relating to health issues related to travel.

You must be in good physical and mental health. It shall be your duty to inform us in case you have any medical condition that may affect your ability to enjoy and pursue fully the services of Classic Escapes. By registering for a Classic Escapes service/program, you certify that you do not have any mental, physical, or other condition or disability that would create a hazard for yourself or others.

COVID-19 ACKNOWLEDGEMENT

In order to participate in one of our tours, travelers must certify that they have not recently been treated for, nor are aware of any physical or other condition or liability that would create a hazard to themselves or other members of the tour and agree to comply with all health protocols as directed by Classic Escapes and their representatives during their journey. Travelers must maintain suitable physical distancing and frequently wash or sanitize hands throughout their journey. Travelers MAY be required to wear masks in vehicles, indoor areas, and any outdoor areas where physical distancing is not possible and in accordance with local regulations. Noncompliance with these procedures will result in the suspension of the journey. **Travelers voluntarily assume all risks and related expenses in the event that they or any member of their traveling party require testing, quarantine, or become infected with COVID-19.** Classic Escapes will endeavor to provide assistance wherever possible.

TRAVEL INSURANCE: For your protection, we strongly recommend that you purchase trip cancellation and travel accident insurance. However, no representation or description of the insurance made by Classic Escapes to you constitutes a binding assurance or promise about the insurance. Classic Escapes is not an insurance company and has no responsibility for the submission, payment, or adjustment of any insurance claims. Any insurance claims that may fall under the relevant travel insurance policy must be submitted to the insurance company identified in the policy. We recommend the following service – please visit the website to enroll: <http://www.travelguard.com/classicescapes/>. Any questions about what travel insurance does or does not cover should be addressed directly to the travel insurance company, Travel Guard at 1-866-385-4839 and reference ARC #71298. If you decline insurance coverage, you will personally assume full responsibility for any financial loss associated with your travel arrangements, and you could lose your

travel investment and/or have to pay more money to correct the situation. THE PURCHASE OF TRAVEL INSURANCE IS HIGHLY RECOMMENDED ON ALL TRIPS.

EMERGENCY EVACUATION COVERAGE: For the convenience of our travelers, Classic Escapes provides a complimentary Medical Insurance Plan during your trip via Travel Guard Group, Inc. This includes:

- Emergency evacuation insurance up to \$100,000.
- Up to \$25,000 medical expense and up to \$500 dental expense coverage subject to the terms and limitations of the insurance policy.
- 24-hour worldwide travel and medical assistance.

Medical Plan (926801)

Please click here to view complete coverage of details.

https://webservices.travelguard.com/Product/FileRetrieval.aspx?CountryCode=US&StateCode=AL&ProductCode=926801&PlanCode=NW&FileType=PROD_PLAN_GM

TERMS & CONDITIONS

TOUR OPERATOR: Classic Escapes acts as a tour operator/travel agent only. Classic Escapes does not own, operate, manage, or control any independent suppliers of services and is not liable for their acts or omissions. Classic Escapes' obligations to you are to make travel bookings on your behalf and to arrange relevant contracts between you and other travel service providers. We have no responsibility for these services, nor do we have the authority to make any warranty or representation regarding their standard. Requests cannot be guaranteed. All bookings are subject to the terms and conditions and limitations of liability imposed by these travel service providers. You understand that your legal recourse is against the specific provider, not Classic Escapes. Conditions can change rapidly in a country at any time. It is your responsibility to check the USA Government Travel advisories for your intended destination at <https://travel.state.gov/content/travel.html>.

RESPONSIBILITY OF THE COMPANY: We always do our best to make sure your travel arrangements are satisfactory. However, Classic Escapes and its employees, shareholders, subsidiaries, affiliates, officers, directors, successors, agents, and assigns do not own or operate any third-party entity that provides goods and services for your travel, including without limitation lodging facilities, airline, vessel, motorcoach, or other transportation companies, local ground operators, providers, food service providers, etc. All such persons and entities are independent contractors and are in no way affiliated to Classic Escapes. We are not liable for any delays or additional costs incurred by the Traveler as a result of any actions or occurrences by any of the foregoing third party entities.

LIABILITY: Classic Escapes is not liable for any negligent or willful act or failure to act of any travel service provider or of any third party. Because Classic Escapes does not have the right to control the operations of such travel service provider or any third party, you agree that Classic Escapes is not liable for any personal injury or property damage which may arise out of these services. Classic Escapes hereby disclaims any liability whether based on contract, tort, strict liability or otherwise, including without limitation liability for any direct, punitive, special consequential, incidental or indirect damages, in connection with the goods or services provided by any supplier booking through Classic Escapes, including without limitation liability for any act, error, omission, injury, loss, accident, delay or irregularity which may be incurred through the fault, negligence, willful acts, omissions or otherwise of such travel service provider or any third party, or their respective employees, agents, servants, or representatives, including, without limitation, their failure to deliver or their partial or inadequate delivery of services, their cancellation and refund policies, fuel increases, bankruptcy or cessation of operations and other matters outside of Classic Escapes' control, and you hereby exonerate Classic Escapes from any liability with respect to the same.

FORCE MAJEURE: Classic Escapes will not be in breach of these terms and conditions or otherwise be liable to you, for any failure or delay in performing an obligation under this Agreement that is due to any of the following causes, to the extent beyond its reasonable control: acts of God, accident, riots, war, terrorist act, illness, disease, epidemic, pandemic, quarantine, civil commotion, breakdown of communication facilities, including web host and internet service provider, breakdown or malfunction of equipment, destruction of or serious damage to facilities, natural catastrophes including, but not limited to extreme weather events, floods and volcanic eruptions, governmental acts or omissions, changes in laws or regulations, national strikes, fire, explosion, generalized lack of availability of raw materials or energy, and any other unforeseen circumstance which is beyond the control of Classic Escapes. THE PURCHASE OF TRAVEL INSURANCE IS HIGHLY RECOMMENDED ON ALL TRIPS.

REFUSAL OF SERVICE: Service providers reserve the right to refuse service to travelers at their sole discretion, including, without limitation, if the traveler: (i) lacks proper documentation for the country of destination; (ii) has a contagious disease; (iii) is under the influence of alcohol, drugs, or narcotics; and/or (iv) manifests disruptive and/or unruly behavior. Classic Escapes assumes no liability for the acts of the service provider in refusing service.

ELECTRONIC OR HANDWRITTEN SIGNATURE: Both parties agree that you may acknowledge and agree to these Terms: (i) electronically; (ii) by handwritten signature; (iii) by any other electronic means, including, without limitation, via email acceptance of

these Terms; or (iv) by your implied consent deemed via your actions, which shall include without limitation the payment of the invoice in part or in full or your use of the services provided by Classic Escapes or any other travel supplier related to your booking. All such means will be deemed to constitute effective acknowledgement and execution of this Agreement and shall be sufficient to bind the parties to the terms and conditions of this Agreement.

RESERVATION OF RIGHTS: We reserve the right, in our sole discretion, to change these Terms and Conditions at any time. Updated versions of the Terms will be provided to you, will be posted on our website, and are effective immediately on posting.

GOVERNING LAW: The construction, validity, and performance of these Terms and any disputes between the parties shall be governed by and construed according to the laws of the State of New York, without giving effect to its conflict of law principles, and any federal laws applicable therein. Both parties submit to the exclusive jurisdiction of the courts of the State of New York with respect to any legal proceedings relating to these Terms.





RESERVATION FORM: INDIANA UNIVERSITY~ BOTSWANA 25AFL0313/IU

Enclosed is my deposit for \$ _____ (\$2,400 per person for the main trip and \$700 for the pre-extension & \$800 the post extension) to hold _____ place(s) on the Wildlife Safari to Botswana departing on March 13, 2025. **Check your Tour at a Glance section for all pricing.**

Final payment due date is December 8, 2024

Please make check payable to CLASSIC ESCAPES and mail to 191 W Poplar Street, Floral Park, NY 11001 **OR**

Charge deposit to: ☐ MasterCard ☐ Visa ☐ American Express ☐ Discover

(Credit Card Authorization form needs to be completed and returned to Classic Escapes via mail or fax to 718-204-4726)

1) NAME (As appears on passport): ☐ Mr. ☐ Mrs. ☐ Ms. _____ Date of Birth (M/D/Y) ____/____/____

2) NAME (As appears on passport): ☐ Mr. ☐ Mrs. ☐ Ms. _____ Date of Birth (M/D/Y) ____/____/____

WHAT NAME YOU PREFER TO BE CALLED IF DIFFERENT FROM ABOVE: 1) _____ 2) _____

Passport No. _____ Green Card No. _____ Expiration Date _____ Nationality _____

STREET ADDRESS: _____

CITY: _____ STATE: _____ ZIP: _____

PHONES: HOME: () _____ OFFICE: () _____ MOBILE: () _____

E-MAIL ADDRESS: _____ FAX: () _____

A copy of your passport must accompany this form to confirm reservation. Upon receipt of your signed reservation form, passport copy and deposit we will, subject to availability, reserve your spot on the tour. Passport must be valid for at least 6 months after the return of your trip and have six consecutive blank pages in the visa section.

- ☐ I certify that I have not recently been treated for, nor am I aware of any physical or other condition or liability that would create a hazard to myself or the other members of this tour.
- ☐ The two of us above are sharing a room and, where possible, would like a room with: ☐ ONE ☐ TWO Beds (Make one selection only)
- ☐ I am sharing with _____ (form sent separately)
- ☐ I need assistance in securing a roommate. I understand if the tour operator cannot locate one for me by final payment date, I agree to pay the additional single. I prefer to share with: ☐ Smoker ☐ Non-smoker
- ☐ I desire single accommodations, if available, and will pay the single supplement additional cost
- ☐ I/We wish to participate in the optional extension(s) at an additional per person cost of:
☐ Cape Town pre-extension ☐ Victoria Falls post-extension

- ☐ **CLASSIC ESCAPES CAN ASSIST WITH INTERNATIONAL FLIGHT ARRANGEMENTS FROM ANY US CITY.**
- ☐ ☐ YES, I WILL REQUIRE ASSISTANCE. PLEASE SEND ME INFORMATION TO DEPART FROM _____
☐ I REQUIRE: ☐ ECONOMY ☐ BUSINESS/FIRST CLASS

We'd love to send you exclusive offers and the latest news from our partners around the world. We'll always treat your personal details with the utmost care and will never sell them to other companies for marketing purposes. ☐ **No thanks, I don't want to hear about offers and news.**

All rates quoted are based on tariffs and value of foreign currencies in relation to the U.S. dollar in effect as of July 24, 2023 and are subject to change. Cancellation penalties applicable as outlined on Conditions of Travel. **WE STRONGLY RECOMMEND THAT YOU OBTAIN TRAVEL INSURANCE. RESERVATIONS ARE ACCEPTED SUBJECT TO TOUR CONDITIONS AND WILL BE CONFIRMED ONLY IF ACCOMPANIED BY COMPLETED FORM SIGNED BY THE TOUR PARTICIPANT(S).**

SIGNATURE: _____ DATE: _____

SIGNATURE: _____ DATE: _____

CLASSIC ESCAPES INC.
 191 W Poplar Street, Floral Park, NY 11001
 Tel: 800-627-1244 Or 718-280-5000
 Fax: 718-204-4726
 Email: info@classicescapes.com

INDIANA UNIVERSITY ~BOTSWANA
MARCH 13 TO 25, 2025



191 W Poplar Street, Floral Park, NY 11001
T: (718) 280-5000; (800) 627-1244
F: (718) 204-4726
E: info@classicescapes.com

CREDIT CARD PAYMENT AUTHORIZATION

Please Note: If you wish to charge your deposit to Visa, MasterCard, American Express or Discover, this authorization form MUST be completed and returned to us along with your reservation form before we can process your application.

I authorize (**Classic Escapes Inc.**) to charge my VISA/MASTERCARD/DISCOVER/AMEX listed below:

Name appearing on credit card

Card number

Expiration date

Card Verification Number*

Card Type

Billing address of credit card

Amount of transaction

Services rendered/Items purchased

Phone number

Signature

Date

***How To Locate Your Card Verification Number:**

(**Visa, MasterCard, Discover:** Locate the credit card number on the back of the card above the signature box. Enter the 3-digit number which follows the credit card number. **American Express:** Enter the 4-digit number found directly above and to the right of the credit card number.)

I understand that all rates quoted on this tour I'm making a payment on are based on tariffs and value of foreign currencies in relation to the U.S. dollar in effect as of March 7, 2024 and are subject to change Cancellations are only effective on receipt of written notification. The following per person fees are applicable on this tour:

- Up to 6 months prior to departure (September 14, 2024), \$300 per person administrative fee, plus \$500 non-refundable deposit given to overseas suppliers.
- 179 days to 96 days prior to departure (September 15 to December 7, 2024), \$300 per person administrative fee, plus \$1,500 non-refundable deposits given to suppliers.
- 95 days to 76 days prior to departure (December 8 to December 27, 2024), deposit is forfeited.
- 75 days to 60 days prior to departure (December 28, 2024 to January 12, 2025), 25% refund is possible.
- 59 days or less prior to departure (January 13, 2025), no refund is possible.

These cancellation fees are also in addition to any fees imposed by airlines.

PLEASE NOTE: At times, our bank requires photocopy of credit card (both sides) and driver's license or document showing signature of cardholder, in order to process the charge. While it is not required at this time that you include these materials with your deposit, if our bank requests it, we will contact you for these copies.