



THE NORTH CAROLINA ZOO SOCIETY

CORDIALLY INVITES YOU TO JOIN
DR. DAVID AND MRS. JANET JONES

ON AN EXCLUSIVE SAFARI TO

ZAMBIA

AFRICA'S LESS DISCOVERED WILDERNESS

JUNE 13 TO 26, 2024



191 W Poplar Street, Floral Park, NY 11001
T: (718) 280-5000; (800) 627-1244
F: (718) 204-4726
E: info@classicescapes.com
W: www.classicescapes.com

For more information, find us on:
[facebook.com/Classic.Escapes.inc](https://www.facebook.com/Classic.Escapes.inc)
twitter.com/classicescapes
[instagram.com/classic_escapes](https://www.instagram.com/classic_escapes)

YOUR TOUR LEADER ~ DR. DAVID JONES, DVM

Dr. David Jones was the Director of the North Carolina Zoo from 1994 to 2015. He is a veterinarian and zoologist by training and worked before coming to North Carolina with the Zoological Society of London for 25 years in several capacities before becoming its Chief Executive Officer.

Jones is the former Chairman of one of the world's oldest conservation organizations, Fauna and Flora International, and served as the Chairman of the Brooke Hospital for Animals (now The Brooke), one of the world's largest international animal welfare agencies. He was Chairman of the Conservation Committee of the World Wildlife Fund in the United Kingdom and was on the Council, both of World Wildlife Fund UK and the US. He is currently the Founder and Chairman of Wild Welfare and Brooke USA.



Dr. Jones has consulted in over 50 countries, has been involved in the design, development, and management of some 30 zoos, particularly in the Mediterranean and Arabian Gulf Region, and has written over 100 reviewed scientific papers and numerous popular articles.

Dr. Jones is particularly interested in the links between conservation, natural resource management, and worldwide rural economic development. He believes very strongly that stewardship of our natural resources will only succeed if people come to understand the links between their well-being, the economy, and the environment. Many of the programs that the NC Zoo undertakes are directed at helping the public to make these connections.

YOUR SPECIALIST/GUIDE: NIC PROUST

Nic is native to Cape Town and grew up on the slopes of Table Mountain, learning to love the wild beauty of the Cape and all of the life within it. He earned a degree in Ecology and Earth and Geographic Sciences at the University of Cape Town and a post-graduate degree with honors in Zoology from Stellenbosch University. His academic expertise has given him the opportunity to have a hands-on role in conservation work, most notably with the reintroduction of over 50 black and white rhinos in Botswana. His studies are also an invaluable feature of his tours, where he has the unique ability to provide a range of insight into what travelers in his care encounter on the road. After a 5-year tenure in the Okavango as a conservation ecologist, Nic spent 12 years guiding wildlife safaris throughout Southern Africa. He has a passion for wildlife, sharing his experiences, and the wonders of the bush through his guiding, photography, and conservation blog.



COUNTRY OVERVIEW ~ ZAMBIA

Follow the footsteps of Livingstone and experience the verdant beauty of Zambia as you feel Africa beneath your feet on a walking, and wildlife-viewing safari in Kafue, South Luangwa, or a canoe trip on the Lower Zambezi. This is the unspoiled, and less explored Africa, where animals are shy, and the sense of adventure is heightened. Discover this huge and untamed wilderness, sparingly inhabited by local tribesmen, rich in animal and bird life. Your daily wildlife viewing will allow you to explore and discover the wealth of wildlife that inhabits this area. At night, return to the safari chic comfort of chalets and tented camps for more wildlife viewing from your private verandah and thatched dining rooms, where the fine cuisine is only upstaged by the view!

A MAP OF YOUR JOURNEY TO ZAMBIA



YOUR ITINERARY

DAY 1 ~ THURSDAY ~ JUNE 13

USA/EN ROUTE

Your African adventure begins this morning as you board your flight to Lusaka. (Meals Aloft)

DAY 2 ~ FRIDAY ~ JUNE 14

LUSAKA

This afternoon, arrive in Lusaka, Zambia's capital city where you will be met and escorted to your hotel for the night.

Latitude 15 is a fabulous boutique-style hotel named after its latitude coordinates, located in the quiet residential suburb of Kabulanga. All rooms are cool in summer, cozy in the winter, and naturally sunlit. The rooms have comfortable beds, walk-in showers, full-sized baths, inviting sofas, 32" flat-screen TVs, Nespresso coffee machines, complimentary still and sparkling Latitude mineral water, and, of course, free broadband Wi-Fi. Latitude 15 Hotel provides delicious food, an inspired wine list, a wonderful ambiance, and attentive customer service.

Overnight at the LATITUDE 15 HOTEL. (No Meals) 15.thelatitudehotels.com/



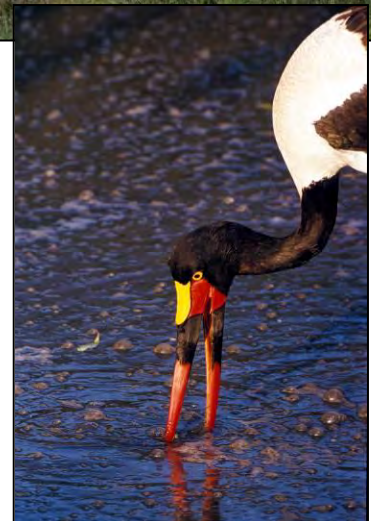
DAYS 3/4/5 ~ SATURDAY/SUNDAY/MONDAY ~ JUNE 15/16/17

LUSAKA/KAFUE NATIONAL PARK~ILA SAFARI LODGE

Today drive to Kafue National Park (*approximately 4 hours*), Zambia's oldest park and one of the largest. It was proclaimed in 1950 and is the second-largest national park in the world. From the astounding Busanga Plains in the Northwestern section (a significant wetland resource virtually untouched by development and human activity) to the tree-choked wilderness and the lush dambos of the south, fed by the emerald, green Lunga, Lufupa, and Kafue Rivers, the park sustains huge herds of a great diversity of wildlife with the highest mammal species diversity in Zambia, boasting 55 large mammal species – including 20 ungulate and six cat species. The Lufupa area is home to hundreds of ubiquitous puku and Dafassa waterbuck. Roan antelope, sable, Lichtenstein's hartebeest, warthog, and elephant are often seen while at twilight hippos emerge from their deep-water channels to graze. This wealth of wildlife is also a big attraction for predators, including frequent leopard and lion sightings. Servals are seen occasionally.



Birdwatching – especially on the rivers and the dambos – is superb with nearly 500 species recorded throughout the park. Notables include the Grey Crowned Crane, Racket-tailed Roller, Schalow's Turaco, Yellow-billed Oxpecker, Red-necked Spurfowl, Böhm's Bee-eater, Trumpeter Hornbill, and Senegal Coucal. The open water and secluded riverine fringe provide further habitat for African Finfoot, Half-collared Kingfisher, Saddle-billed Stork, White-backed Night-Heron, and large flocks of African Openbills.



In addition, the Kafue National Park is part of a trans-frontier park initiative – the Kavango-Zambezi Transfontier Conservation area, or Kaza Park. The aim is to establish a world-class conservation linking a vast network of national parks, game management areas, and conservancies over five African countries and eventually covering over 108,000 square miles.

Ila lodge is an eco-friendly lodge situated on the banks of the Kafue River, looking out over the water and the wilderness of Kafue National Park beyond. There are 10 luxury tents, eight standard tents, and two-family tents. Each is raised on wooden stilts, to make the most of those beautiful river views. Blending traditional construction with modern African styling, the tents boast some incredible amenities including an outdoor shower and bath with views over the river. Dinner is served in the open-air restaurant offers stunning views over the Kafue River, food is of high quality and the service is excellent. The camp operates on solar power, so high-current items such as hairdryers cannot be used. There are power points in the rooms for charging electronic equipment. There is no mobile phone reception in this area.

Overnights at ILA SAFARI LODGE (B,L,D Daily)

<https://zgh.travel/camps/ila-safari-lodge-83>



DAYS 6/7/8 ~ TUESDAY/WEDNESDAY/THURSDAY~ JUNE 18/19/20

KAFUE NATIONAL PARK/SOUTH LUANGWA~LION CAMP

Transfer to Chunga Airstrip and board your charter flight to Lusaka where you will board your scheduled flight to Mfuwe, gateway to the Luangwa Valley, one of Africa's prime wildlife sanctuaries, boasting a variety and concentration of animals and birdlife that have made it world famous. This is the landscape one thinks of when Africa comes to mind, with herds of antelopes sheltering under thorn trees or roaming the plains, predators skulking in the shadows, and primordial drama in every vale.



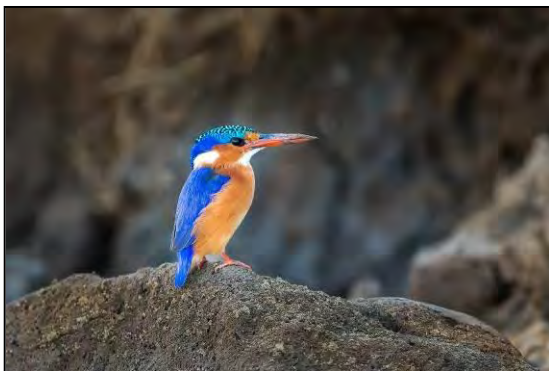
In May 1938 three parks were defined in the valley: The North Luangwa Reserve; the Lukusuzi Reserve; and the South Luangwa Reserve. In 1949 Senior Chief Nsefu established a private reserve on the Luangwa's eastern bank, between the Mwasauke and Kauluzi Rivers. This became the Nsefu Sector, which was absorbed into the boundaries of the present park when new legislation turned all reserves into national parks in February 1972. Nesting at the tail end of the Great Rift Valley, in the Luangwa Valley, the South Luangwa National Park is wild and remote. It has an abundance of wildlife that is rarely seen in other reserves and is one of the finest wildlife sanctuaries in the world with over 60 species of animals and 400 bird species. The park has 14 different antelope species, most of which are easily seen on drives. This includes the elusive bushbuck, kudu, eland, and impala, which should not be confused with the puku, of similar size but a much fluffier buck with a rich orange coat and prolific. Duiker, reedbuck, roan, sable, hartebeest, grysbok, klipspringer and oribi also occur but are harder to find.



This huge area of pristine wilderness is also home to larger predators. The park has one of the densest populations of leopards in Southern Africa. Lions are as plentiful in the Luangwa as anywhere else in Africa and the excitement of tracking lions and seeing them on a walking safari is unparalleled. Very often they roam in prides of up to 30. The survival of the valley depends on the winding Luangwa River, crowded with hippos, crocodiles, and wading waterfowl. Few parks can match this phenomenally high wildlife density, nor do they have the ability to show visitors such remarkable wildlife in so remote and isolated a wilderness.



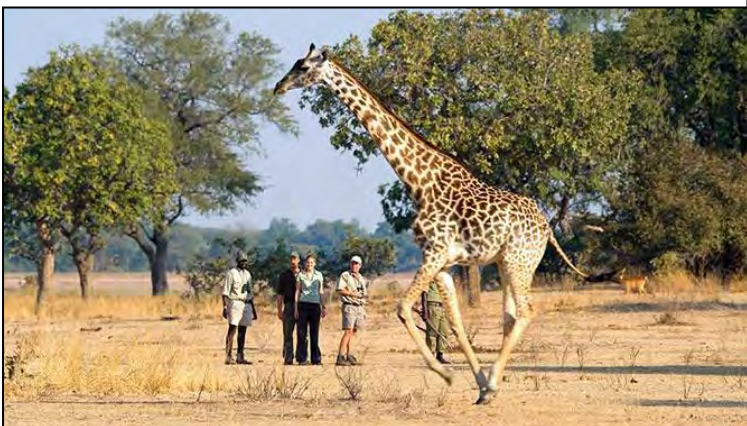
With about 400 of Zambia's 732 species of birds appearing in the Valley, including 39 birds of prey and 47 migrant species, there is plenty for the birdwatcher to spot, whatever the season. Near the end of the dry season, when the river and oxbow lagoons begin to recede, hundreds of large water birds can be seen wading through the shallows. The Red-faced, Yellow-billed Storks move along with their beaks open underwater, disturbing the muddy liquid with their feet until the fish flop into their mouths. The pelicans tend to operate in lines abreast, driving the fish before them into shallows before scooping them up into their beak pouches. The striking Saddle-bill Stork makes quick darting movements into the water. Of the most beautiful are the elegant Crowned Cranes, with their golden tufts congregating in large flocks at the salt pans. Also seen are swifts, hobbies, and bee-eaters, as well as birds of prey such as the Steppe Eagles and Steppe Buzzards that come all the way from Russia. A special sight is the hundreds of brightly colored Carmine Bee-eaters nesting in the steep sandy banks of the river. The ever-present sound of the birds in the Valley takes some getting used to. An early caller is the Ground Hornbill, looking like a well-dressed turkey, but emitting the sound of a deep base drum. The melodious Heuglin's Robin, the shrill cry of the Fish Eagle, and the background cooing of doves and larks add to the orchestra of Africa.





Your days (and nights) here will be spent exploring via wildlife drives and on foot on walking safaris. Morning and late afternoon drives offer excellent opportunities to view the diverse flora and fauna of the area. Afternoon wildlife experiences are topped off with sundowners before returning to camp for exquisite dining. Many times, the wildlife viewing is continued after dark as you search for nocturnal species.

Lion Camp is located in the northernmost reaches of South Luangwa National Park, away from the park gates providing a safari like it should be – abundant game viewing and few other vehicles. The camp is comprised of 10 rooms joined by a central winding walkway. All the rooms have spectacular panoramic views of the plain and plenty of wildlife pass through, so wildlife can be viewed from the comfort of your own deck. Luxury rooms retain the essential 'tree house' aesthetic, with canvas walls and thatch roof, but with even more comfort. Evening Breeze cooling units will be installed over the beds, a water filtration system ensures crystal clear showers, solar energy provides all the power, and Wi-Fi Internet access is available in the rooms. Overnights at the LION CAMP. (All Meals Daily) <https://lioncamp.com/>



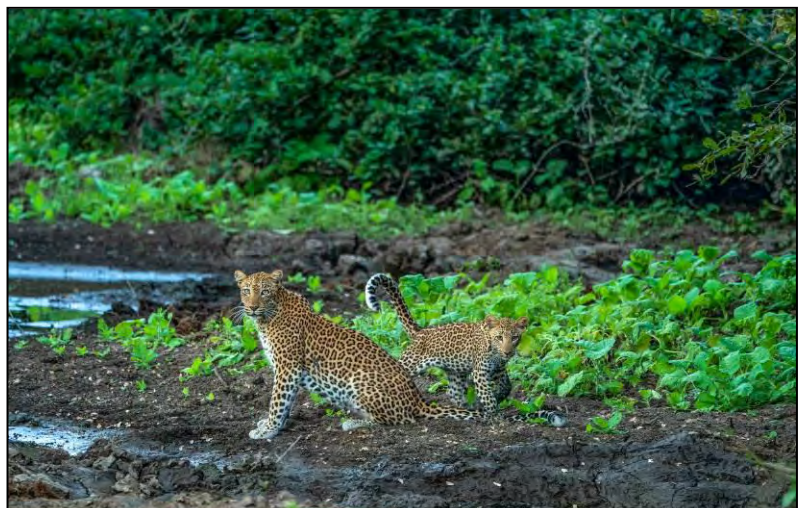
DAYS 9/10/11/12 ~FRIDAY/SATURDAY/SUNDAY/MONDAY~ JUNE 21/22/23/24

SOUTH LUANGWA/LOWER ZAMBEZI NATIONAL PARK~ANABEZI CAMP

Return to Mfuwe and connect with your charter flight to Lower Zambezi Valley. This area is home to a large number of mammal species including elephant, hippo, buffalo, kudu, zebra, impala, bushbuck, duiker, klipspringer, lion, leopard, hyena, African wild dog, serval, civet, genet, armadillo, chacma baboon and vervet monkeys, just to name a few. The Lower Zambezi Valley remains a huge and untamed wilderness, sparingly inhabited by local tribesmen, and rich in big game and bird life.

The beauty of the Lower Zambezi National Park is its state of absolute wilderness. Lying in the Lower Zambezi Valley between the rolling hills of the hazy escarpment and the Zambezi River, you find islands sprinkled with reeds, which are the home and feeding grounds for many animals. These waters are a focal point for elephant, hippo, buffalo, zebra, lion, leopard, African wild cats, wild dogs, various antelope species, and baboon and vervet monkeys, together with a great variety of birds. The wildlife punctuates this landscape perfectly, leaving the visitor often at a loss as to which to admire more, the scenery or the animals. With the Zambezi River as one of the park's natural boundaries, the area also attracts an abundance of bird life estimated to include almost 400 bird species. Bird watchers will be delighted at the variety of colorful birds such as Scarlet and Green Lovebirds, Yellow, Blue, and Gray Parrots, Azure Kingfishers, and Large-beaked Hornbills. You will also hear one of the most unforgettable cries of Africa – the eerie lament of the African Fish Eagle.

The mighty Zambezi River shaped this wild land. After thundering over Victoria Falls miles upstream, the massive river slows behind the massive dam that created Lake Kariba and then, unfettered, pushes its way east through the Zambezi Valley toward Mozambique and the Indian Ocean. Your daily adventures will feature wildlife viewing by vehicle, boat, or canoe, so as to see animals in the least obtrusive manner possible as they go about their daily lives in the valley, along the river, and on the many islands.



Anabezi is a luxury lodge located on the east of the Lower Zambezi National Park which is truly remote and secluded. Anabezi is set a small distance back from the confluence of the Zambezi and Mushia rivers, overlooking an open floodplain and an area of riverine forest that attracts a lot of game in the dry season. The lodge has 12 spacious, stylish suites erected on wooden platforms to offer you a magnificent view of the Lower Zambezi National Park. The tents are connected to the main camp areas by raised wooden walkways. Each tent has two teak double beds, or one king sized bed, within a well-designed four-poster mosquito net. The en-suite bathrooms are rounded off with a solid structure, but the rest of the room is open plan. There is an outdoor toilet, basin, and shower and then on the verandah is your private plunge pool and deck chair area. The walls are canvas but glass sliding doors elegantly separate the indoor and outdoor space. Anabezi has two outdoor pools, and two bars/lounges. 24-hour electricity and Wi-Fi.



<https://www.anabezi.com/>

DAY 13~TUESDAY~ JUNE 25

LUSAKA/USA/ EN ROUTE

Fly to Lusaka aboard light aircraft and transfer to your flight for home. (B, Meals Aloft)

DAY 14 ~ WEDNESDAY~ JUNE 26

CHARLOTTE

Today you land in the US, bringing with you the memories of all the wonderful sights of Southern Africa. (Meals Aloft)



OPTIONAL POST-EXTENSION TO VICTORIA FALLS, ZAMBIA

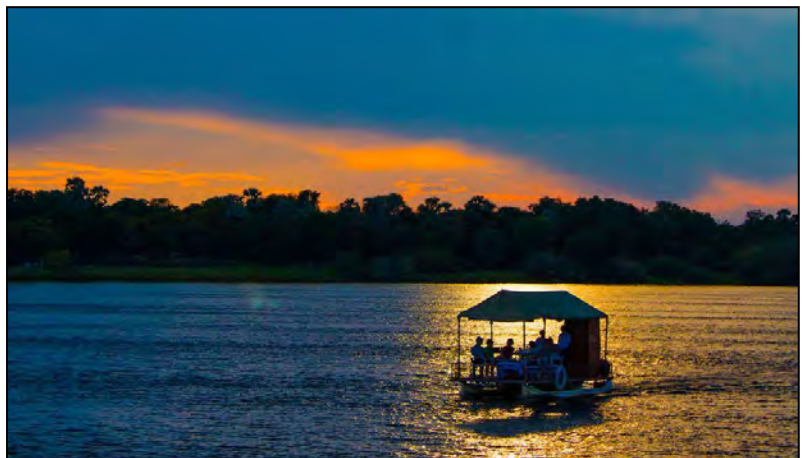


DAYS 13/14/15~TUESDAY/WEDNESDAY/THURSDAY~ JUNE 25/26/27

LUSAKA/LIVINGSTONE~ TONGABEZI LODGE

Today a new adventure awaits you as you fly to Livingstone. At more than twice the size of Niagara Falls it's no surprise that Victoria Falls are among the Seven Wonders of the World. Mosi-oa-Tunya (*The Smoke that Thunders*), derived from the towering column of spray when the Zambezi River runs high, is the name that Zimbabwe's local people have given to this awesome natural phenomenon. The name is probably more appropriate and descriptive than "Victoria", which has a far too calm and composed ring to it to do justice to the masses of thundering, swirling water of these spectacular falls. But all Dr. David Livingstone probably thought of when he named the falls after his Queen in 1855 was his royal duty. Five separate falls make up this incredible spectacle that plunges more than 300 feet into a sheer-sided chasm that separates Zimbabwe from Zambia. The awe-inspiring abyss is spanned by a 1905 Edwardian bridge that links the two countries, and many adventurers now use it for bungee jumping. The masses of water plunging down the falls and into the gorge below originate from the mighty Zambezi River that meanders through more than 1,677 miles of the African countryside.

Your visit will include a tour of the falls on the Zambia side. An afternoon sundowner cruise will be a highlight as you glide along the Zambezi River, watching hippos snort, elephants drink on the riverbank, monkeys jump from branch to branch, birds fly overhead or pose for a photograph on the branches, and much more. Enjoy your gin and tonic, cool beer, or drink of choice, and see a panoramic sunset as the sun dips below the horizon, painting the whole area in unbelievable colors of brilliant reds, yellows, purples, and mauves.



You'll also get a chance to visit an authentic native village to see how the local people live. You will be escorted by your English-speaking village guide, seeing a culture and ways of life that remains virtually unchanged through the ages. View their daily rituals, from the women cooking and mending their huts, to the artistic woodcarvings created right in front of you by the village artisans. Smiling children scatter about and you are welcome to mingle and take photographs. Long after you've left, this cultural visit will remain with you, and you'll feel as though you've experienced a different part of Africa, quite essential if you're to understand the complexity of this continent.



Another activity you will have while in Victoria Falls is a rhino walking safari at Mosi-oa-Tunya Game Reserve. This lasts approximately three hours, walking at a leisurely pace and stopping as frequently as you wish to enjoy the nature around you. The guide will find the white rhino and you will track as much as possible. Enjoy a refreshment before returning to camp. At an additional cost, you can also arrange other activities such as bungee jumping, white-water rafting, helicopter ride, micro-flight, etc.

You will stay at the luxurious Tongabezi Lodge, ideally located on a sweeping bend, with an air of romance and indulgence tucked away in one of the most beautiful locations in the world just upstream from Victoria Falls, on the Zambian side of the Falls. The main lodge is set amongst ebony and acacia trees alongside the Zambezi and features a rock-hewn swimming pool, a special hide for bird watching (with over 300 species recorded), and a quaint dining and lounge area. The lodge, and its surroundings, invite relaxation and a chance to experience nature at a meandering pace. Life here is understated but refined with a strong sense of the spirit of Africa. Architecturally unique cottages are romantically dotted on the banks with views of the Zambezi.

Overnights at TONGABEZI LODGE in river cottages. (All Meals Daily) <https://greensafaris.com/tongabezi/>



DAY 16~FRIDAY~JUNE 28

LIVINGSTONE/LUSAKA/EN ROUTE

Last chance to photograph the incredible Falls, before transferring to the airport for your flight to Lusaka where you connect with your overnight flight to the USA. (B)

DAY 17~SATURDAY~JUNE 29

USA

Arrive back in the USA today taking with you all the wonderful memories of Zambia.



INCLUSIONS

- All charters and scheduled flights within Zambia as per itinerary.
- Roundtrip flight between Lusaka/Livingstone on the post extension.
- Superior accommodations throughout as indicated or similar.
- Dr. David Jones and Mrs. Janet Jones will accompany the group with a minimum of 10 travelers on both mains and extension programs.
- Services of Professional Naturalist Guide Nic Proust with 10 travelers.
- All meals while on while on safari. Other meals as specified in itinerary.
- Complimentary bottled water in safari vehicle.
- Laundry is included in Kafue and South Luangwa.
- Drinks (coffee, tea, water, beer, and local wine) are included beverages during safari in Zambia. (Champagne and imported spirits are extra.)
- All wildlife viewing by 4X4 open vehicles, driven by professional rangers, by foot or boat.
- All applicable hotel and lodge taxes and gratuities for baggage handling.
- All park entry fees.
- Complimentary, baggage tags and water bottle.
- Complimentary emergency evacuation insurance.

EXCLUSIONS

- Roundtrip air transportation from the USA to Lusaka. If you require assistance with air arrangements, contact Classic Escapes.
- U.S. and foreign airport taxes.
- Passport and visa fees and service charges for obtaining visas. Zambia currently requires a visa.
- Excess baggage charges levied by airlines.
- Meals and beverages, other than those specified.
- Gratuities to drivers, rangers, guides, and other conveyance attendants. *Gratuities should only be given as a reward for exceptional service and are at your discretion. We estimate \$20 per person/per day for the specialist guide. \$15 per person/per day for the safari ranger. If there is a tracker in addition to the ranger, \$8 to \$10 per person/per day; \$10 per person/per day for the camp staff. \$5 per person for each arrival and departure transfer from the airport/hotel. These are daily per service estimates and an exact tipping chart will be detailed on your final itinerary.*
- Laundry (other than those mentioned above) and other items of a personal nature.
- Personal and baggage insurance.
- Cost for anything not specifically mentioned in the listing above.

| |
|---|
| Please Note That The Itinerary Sequence Is Correct At The Time Of Writing But Is Subject To Change. |
|---|



THINGS YOU NEED TO KNOW ABOUT ZAMBIA

Participants:

- Must be able to climb in and out of safari 4 x 4 vehicles, canoes, boats, and small aircraft unassisted. People need to be willing to rotate seats.
- Must be able to stand and/or walk moderate distances when visiting villages, towns, or other sites. Walking will be on uneven ground or uphill, often at altitudes many people are not used to.
- Should generally be in good health and prepared to travel to locations without medical facilities.

In general, this trip requires:

- Flexibility and good humor – unexpected changes and/or glitches will occur.
- A spirit of adventure and curiosity.
- Interest in and willingness to appreciate a destination with uneven infrastructure and a bending definition of comfort. That being said, all your accommodations on this program are nestled in absolute luxury where pampering is the norm.

Air Schedules

The cost of your program does not include international airfare. If you require assistance, please contact Classic Escapes at 718-280-5002 and we will happily provide air quotes to you. You may make your own international air arrangements, but please ensure you arrive/depart on the correct dates. Contact your Journey Manager at Classic Escapes to verify the dates to ensure there are no errors. ***The start city and end city for this program is Lusaka, Zambia.***

Upon registration, you must provide your full legal name as it appears on your passport. In the event an airline ticket is issued with incorrect information you have provided, you will be responsible for charges associated with reissuing the ticket.



YOUR JOURNEY AT A GLANCE

INCLUDING: KAFUE NATIONAL PARK, SOUTH LUANGWA & THE LOWER ZAMBEZI NATIONAL PARKS. POST EXTENSION TO VICTORIA FALLS.

SPONSORED BY : THE NORTH CAROLINA ZOO SOCIETY

ESCORTED BY : DR. DAVID JONES AND MRS. JANET JONES

DATES: JUNE 13 TO 26, 2024

| COSTS: PER PERSON, DOUBLE OCCUPANCY | MAIN BASED ON 10 TRAVELERS | POST EXTENSION TO VICTORIA FALLS BASED ON 10 TRAVELERS |
|--|---------------------------------------|---|
| LAND PACKAGE & INTERNAL AIR | \$14,995 PER PERSON | \$5,295 PER PERSON |
| SINGLE SUPPLEMENT | \$4,995 PER PERSON, ADDITIONAL | \$1,395 PER PERSON, ADDITIONAL |

***SINGLE SUPPLEMENT:** RATE IS VALID FOR THE FIRST TWO SINGLE ROOMS BOOKED. IF MORE THAN TWO SINGLE ROOMS, AN ADDITIONAL SUPPLEMENT WILL APPLY. SINGLES ARE ASSIGNED ON A FIRST COME/FIRST SERVE BASIS.

INTERNATIONAL AIR ARRANGEMENTS: The cost of your program does not include international airfare. If you require assistance, please contact Classic Escapes at 718-280-5002 and we will happily provide air quotes to you. You may make your own international air arrangements, but please ensure you arrive/depart on the correct dates. Contact your Journey Manager at Classic Escapes to verify the dates to ensure there are no errors. **The start and end city for this program is Lusaka, Zambia.**



CONDITIONS OF TRAVEL:

The purchase of your travel booking constitutes a contractual agreement between the traveler(s), customer(s), and/or purchaser(s) (collectively as "**You**" and "**Traveler**"), and Classic Escapes ("**Classic Escapes**", "**We**", "**Us**") pursuant to the following terms and conditions ("**Terms**", "**Agreement**"):

REGISTRATION & PAYMENTS

HOW TO BOOK: Fill out and sign the enclosed reservation form and send it, along with the relevant deposit as shown below, to: CLASSIC ESCAPES, 191 W Poplar Street, Floral Park, NY 11001. Upon receipt of your signed reservation form and deposit, we will, subject to availability, reserve your spot on the tour. You may consider your booking confirmed when you receive a confirmation notice and invoice from us.

DEPOSIT AND FINAL PAYMENT: You will be required to pay the following per-person deposits when booking. Those amounts are:

- \$3,000 for the main trip
- \$1,100 for the post extension

All deposits are subject to the Cancellation policy herein. Final payment is required no less than 95 days prior to departure (March 10, 2024) unless otherwise stated. Some airfares or services must be paid in full at the time of booking. Deposits may be paid by check, wire transfer, or credit card (American Express, Visa, MasterCard, or Discover). Final payment is payable by check, wire transfer, or money order ONLY. Conditioned on receipt of final payment in full, all final documents and air tickets will be sent to you approximately two weeks prior to departure.

CREDIT CARD TRANSACTIONS: If for any reason, any travel service provider is unable to provide the services for which you have contracted, your remedy lies against the provider, and not against Classic Escapes, and in the event that payment has been made to Classic Escapes by credit card, you agree that you will not seek to chargeback your payment to Classic Escapes. If the credit card is passed through to the travel service provider and you seek to chargeback your payment from the provider, you agree to be held liable and indemnify Classic Escapes against this chargeback from the provider, including without limitation any air debit memos charged to Classic Escapes. If the credit card is declined, you guarantee that you will settle any amounts owing to Classic Escapes via money order or cash immediately. Except in cases of fraud, you agree not to file any dispute with your bank or credit card company to avoid or violate any booking terms and conditions of Classic Escapes or its suppliers, including cancellations or changes of itinerary or arrangements for reasons beyond the control of Classic Escapes or its suppliers. If you attempt to chargeback, reverse, or recollect a previously authorized trip payment, Classic Escapes reserves the right to collect all additional costs, fees and expenses associated with such chargeback, reversal, or recollection, including, without limitation, attorney fees.

IMPORTANT CONDITIONS: Prices are subject to increase prior to the time you make full payment. Prices are not subject to increase after you make full payment, except for charges resulting from increases in government-imposed taxes or fees. By signing the reservation form, you expressly acknowledge your acceptance of these conditions (i.e., increases before full payment and increases attributable to government-imposed taxes or fees after full payment will be your responsibility) applicable to your purchase.

RATES: Rates are based on the minimum number of guests outlined in this document, plus airfare costs, currency exchange rates, and other factors, and are subject to change. Though it is rare for Classic Escapes to make a price adjustment after promotion of an itinerary, we do reserve the right to assess a surcharge if the minimum is not met or if increases are forced upon us by airlines or other partners or because of changes in currency exchange rates.

ADDITIONAL FEES: Additional taxes and surcharges that cannot be pre-collected may be charged locally. Cost of passport and visa fees and service charges for obtaining visa fees; excess baggage charges levied by airlines; laundry and other items of a personal nature; optional travel insurance policy(s); or any other costs incurred that cannot be pre-collected are NOT included and are the sole responsibility of the Traveler.

SINGLE SUPPLEMENT: The quoted rate is valid for the first two single rooms booked and on a first-come, first-served basis. If more than two single rooms are needed, an additional supplement may apply. Single accommodations are not guaranteed but will be provided at additional cost if available (see 'Your Journey at a Glance' section for the cost.) The single-room supplement pays for privacy, not better accommodations. For passengers who are traveling alone and wish to share a room with another tour member, we will do our best to provide a roommate. However, if this is not possible, you will be required to pay for the single room supplement prior to your departure from the USA.

GRATUITIES, ENTRANCE FEES & TAXES: Gratuities for baggage handling, service charges and taxes imposed by hotels, and entrance fees to all points of interest as outlined in the itinerary are included in the final cost. U.S. and foreign airport taxes are included in air costs. Tips to drivers and specialist guide(s) are not included and are the sole responsibility of the Traveler.

CANCELLATIONS, DEVIATIONS & CHANGES

TRAVEL INSURANCE: Classic Escapes recommends that all travelers purchase travel insurance.

CANCELLATION: Please be aware that most travel bookings are non-refundable and cancelled bookings will incur charges. These charges can be up to 100% of the cost of the booking, regardless of whether travel has commenced. Where we incur any liability for a cancellation fee or charge for any booking that you cancel, you agree to indemnify us for the amount of that fee or charge. Cancellations are only effective upon receipt of written notification. The following per-person fees are applicable; however, depending on the specific itinerary or other factors, we may require a non-refundable deposit:

- Up to 6 months prior to departure (December 16, 2023), \$500 per person administrative fee, plus \$1,000 non-refundable deposits given to overseas suppliers.
- 6 months to 96 days prior to departure (December 17, 2023 to March 9, 2024), \$300 per person administrative fee, plus \$2,000 non-refundable deposits given to suppliers.
- 95 days to 76 days prior to departure (March 10, 2024 to March 29, 2024), deposit is forfeited.
- 75 days to 60 days prior to departure (March 30, 2024 to April 14, 2024), 25% refund is possible.
- 59 days or less prior to departure (April 15, 2024), no refund is possible.

These cancellation fees are also in addition to any fees imposed by airlines.

REFUNDS: While Classic Escapes uses its best endeavors to ensure that all anticipated accommodation is available as planned, there is no claim of any nature whatsoever against Classic Escapes for a refund, in whole or in part, if any accommodation or excursion is unavailable and a reasonable alternative is not found, or if the Traveler is unable to use any service provided in the itinerary.

CHANGES: Once your tour is reserved, changes to the itinerary are possible subject to the availability of air or land space at the time of your request. Should there be any change fees imposed by any airline or ground operators, or additional costs incurred due to the availability of any space, these costs will be invoiced to you, and you will be responsible for payment thereof.

SPECIAL ARRANGEMENTS: Should you wish to make additional travel plans, including specially arranged pre- or post-tour extensions different than those offered in conjunction with your tour, a service charge of \$150 per person (over and above the cost of the services required) will be assessed.

DOCUMENTS

PASSPORTS: All individuals departing from the United States of America must be in possession of a valid passport. Please check that your passport is valid for at least 6 months beyond your intended return date. It is your responsibility to ensure that you have valid travel documentation, including but not limited to passports and visas, which meet the requirements of immigration and other government authorities at every destination. You are responsible for confirming with the United States Department of State or the representative government agency of the country to which you are traveling to confirm the requirements for visas and/or other requirements for admission to your destination. Any fines, penalties, payments, or expenditures incurred as a result of such documents not meeting the requirements of those authorities will be your sole responsibility.

REAL ID: Beginning October 1, 2021, if you plan to use your state-issued ID or license to fly within the U.S., it is your responsibility to make sure it is REAL ID compliant. If you are not sure if your ID complies, please check with your local state Department of Motor Vehicles or visit www.tsa.gov/real-id.

TRAVEL DOCUMENTS: It is the responsibility of each Traveler to obtain and carry a valid passport, visa(s), and all other documents required by applicable government regulations. When traveling domestically or internationally, the U.S. Transportation Security Administration (TSA) and U.S. Department of Homeland Security (DHS) advise that everyone carry acceptable identification in order to board a flight. Acceptable identification can be found at <http://www.tsa.gov/traveler-information/acceptable-ids>. The name, date of birth and gender that appears on the identification card must exactly match the same such data that is listed on airline ticket(s) and booking records. You acknowledge any failure to strictly comply with these requirements may result in denied boarding or an undue delay at an airport security checkpoint causing Traveler to miss flight(s), and subsequent scheduled travel bookings on cruises and tours.

Travel documents include, without limitation, airline tickets, hotel vouchers, tour vouchers, or any other document (whether in electronic form or otherwise) used to confirm an arrangement with a service provider. Travel documents may be subject to certain conditions and/or restrictions such as, but not limited to, being non-refundable, non-date-changeable, and subject to cancellation and/or amendment fees. Travel documents cannot be transferred to another person to use. All airline tickets must be issued in the name of the passport/photo identity holder. An incorrect name on a booking may result in an inability to use that booking and the booking being cancelled. Any errors in names, dates, and timings may result in an inability to use that booking and the booking being cancelled. Any errors in names, dates, and timings on your documentation will be your responsibility if we are not advised at the time of booking. Please reconfirm your flights at least 24 hours prior to departure.

PRE-DEPARTURE INFORMATION: Upon receipt of your registration and deposit, we will send you an electronic pre-departure packet containing all the information you need to prepare for your tour, including the complete itinerary, packing checklist, required documents, insurance information, etc.

FINAL DOCUMENTS: Electronic final documents and air e-tickets will be sent to you approximately two weeks prior to departure, provided all monies have been paid in full.

TRANSPORTATION

AIR TRANSPORTATION: Your program does not include international airfare. If you require assistance, contact Classic Escapes.

FREQUENT FLYER MILEAGE: Check on the airline's website to enquire who their partners are. Obtain frequent flyer mileage on any of these carriers. Present your frequent flyer card for all flight check-ins and keep the boarding passes until you receive a statement with the mileage credit.

TRANSFERS: Roundtrip airport transfers are included in the tour for guests arriving on group flights. If travelers make their own air arrangements, they will be subject to extra transfer fees.

FLIGHT CONFIRMATION: We strongly suggest that you reconfirm exact flight times with the carrier prior to departure. Air travelers are required to check in at least 2 hours prior to departure time for domestic flights and 3 hours for international flights and must report to the gate at least 30 minutes prior to departure time. Failure to comply may result in the loss of the seat to another passenger.

HAZARDOUS MATERIALS: Federal law prohibits passengers from carrying hazardous materials on the aircraft. Federal law forbids the carriage of hazardous materials aboard aircraft in the passenger's luggage or on the passenger's person. A violation can result in five years of imprisonment and penalties of \$250,000 or more (49 U.S.C. 5124). Hazardous materials include explosives, compressed gases, flammable liquids and solids, oxidizers, poisons, corrosives, and radioactive materials. Examples: Paints, lighter fluid, fireworks, tear gases, oxygen bottles, and radiopharmaceuticals. There are special exceptions for small quantities (up to 70 ounces total) of medicinal and toilet articles carried in the passenger's luggage and certain smoking materials carried on the passenger's person. For further information, each passenger should contact the relevant airline representative(s) on their itinerary. Restrictions on hazardous materials are listed <http://www.tsa.gov/traveler-information/prohibited-items>.

INSECTICIDE NOTICE: Some countries require insecticide spraying of aircraft prior to a flight or while you are on the aircraft. We recommend that you refer to the Department of Transportation's list of airports in countries that require airlines to treat the passenger cabin with insecticides prior to the flight or while on the aircraft available at <https://www.dot.gov/office-policy/aviation-policy/aircraft-disinsection-requirements>.

BAGGAGE & FEES: Additional fees for baggage may apply. Please contact your airline or refer to its website for detailed information regarding its checked baggage policies. On average, international flights from the USA allow one piece of checked luggage, not exceeding 50 pounds, plus a carry-on piece not exceeding 15 pounds; however, we always recommend that you check your airline's policy just before departure, as luggage limitations are always subject to change. There may also be luggage and weight restrictions for your destination and that information will be forwarded to you with your pre-departure material and also be listed on your final documents.

LUGGAGE ALLOWANCES ON INTERNAL FLIGHTS: Your journey includes internal flights aboard light aircraft which are designed with a maximum luggage allowance; this is closely monitored by the flight operators for safety reasons. You are allowed one carry-on and one piece of checked luggage with a total weight of **50.70 lbs. (23 kgs.)** per person including camera equipment. Further, only soft-sided duffel bags are accepted, **without wheels**, as they stow best in vehicles and airplanes with limited space.

PERSONAL WEIGHT ALLOWANCES ON INTERNAL FLIGHTS: Your journey includes internal flights aboard light aircraft which are designed with a maximum body weight and luggage allowance; this is closely monitored by the flight operators for safety reasons. If your personal weight exceeds **85 kilos (187 lbs.)** it may be necessary to purchase an extra seat and your Classic Escapes Journey Manager will contact you should this be necessary.

AIRLINE CLAUSE: The airlines concerned are not to be held liable for any act, omission, or event during the time the passengers are not on board their planes or conveyance. The passengers' tickets in use by the airline or by other carriers concerned when issued shall constitute the sole contract between the airlines and the purchaser of these tickets and/or passengers.

DELAYS: We cannot be held liable for any delays or additional costs incurred as a result of airlines not running to schedule. Any additional land or air fees imposed on account of airline delays will be borne by the traveler.

TRIP DETAILS

ACCOMMODATIONS: You will marvel at the wonderful accommodations provided throughout your tour. All rooms have private bathroom facilities and air conditioning and/or fans, unless otherwise specified. All rates are based on double occupancy. Most rooms are twin-bedded, but king-size beds are occasionally available and should be requested in advance. Accommodations listed in this itinerary are correct at the time of writing, but on rare occasions may be substituted for a different property of comparable quality.

MEALS: All meals as specified in the itinerary. Please notify us if you have special dietary needs or requests, and we will do our best to accommodate.

WATER: It is always advisable to drink bottled and/or filtered water when traveling overseas. Safe drinking water will be provided to travelers free of charge in vehicles and during meals.

PHOTOGRAPHY: The Company reserves the right without further notice to make use of any photograph or video taken during the tour by our photographers without payment or permission. We guarantee that no photographs of a compromising nature will be used.

GUIDES: If one of Classic Escapes' guides is unable to take a trip due to circumstances out of our control (i.e., illness, etc.), we reserve the right to substitute with another guide.

TOUR ITINERARY: To the best of our knowledge the itinerary is correct at the time of printing. We cannot be held responsible for any inaccuracies or changes that may occur after printing.

HEALTH AND SPECIAL REQUIREMENTS: You must have the proper immunizations and health screenings and required documentation of such immunizations and screenings before travel. It is your responsibility to ensure you are aware of any health requirements, health advisories, or health travel restrictions applicable to your travel destinations and to ensure that you carry all necessary vaccination documentation. Classic Escapes is not responsible for providing you with this information. Travel carriers and local authorities at travel destinations may require specific testing prior to boarding and/or upon arrival at your destination, including, but not limited to, a temperature check as a result of the COVID-19 pandemic. You may be denied entry onto your carrier and/or entry upon arrival at your destination or be required to self-quarantine at your destination and upon your return to the United States. You must comply with local government regulations. Any additional costs are your responsibility. Check the State Department Web site <http://travel.state.gov>, for relevant information relating to travel to specific destinations, and the Center for Disease Control <http://wwwnc.cdc.gov/travel/> relating to health issues related to travel.

You must be in good physical and mental health. It shall be your duty to inform us if you have any medical condition that may affect your ability to enjoy and pursue fully the services of Classic Escapes. By registering for a Classic Escapes service/program, you certify that you do not have any mental, physical, or other condition or disability that would create a hazard for yourself or others.

COVID-19 ACKNOWLEDGEMENT

In order to participate in one of our tours, travelers must certify that they have not recently been treated for, nor are aware of any physical or other condition or liability that would create a hazard to themselves or other members of the tour and agree to comply with all health protocols as directed by Classic Escapes and their representatives during their journey. Travelers must maintain suitable physical distancing and frequently wash or sanitize hands throughout their journey. Travelers are required to follow guidelines established by local regulations which may include wearing masks in vehicles, indoor areas, and any outdoor areas where physical distancing is not possible. Explicit instructions will be provided by our guide on arrival. Noncompliance with these procedures will result in the suspension of the journey. **Travelers voluntarily assume all risks and related expenses in the event that they or any member of their traveling party require testing, quarantine, or become infected with COVID-19.** Classic Escapes will endeavor to provide assistance wherever possible.

TRAVEL INSURANCE: For your protection, we strongly recommend that you purchase trip cancellation and travel accident insurance. However, no representation or description of the insurance made by Classic Escapes to you constitutes a binding assurance or promise about the insurance. Classic Escapes is not an insurance company and has no responsibility for the submission, payment, or

adjustment of any insurance claims. Any insurance claims that may fall under the relevant travel insurance policy must be submitted to the insurance company identified in the policy. We recommend the following service – please visit the website to enroll:

<http://www.travelguard.com/classicescapes/>. Any questions about what travel insurance does or does not cover should be addressed directly to the travel insurance company, Travel Guard at 1-866-385-4839 and reference ARC #71298. If you decline insurance coverage, you will personally assume full responsibility for any financial loss associated with your travel arrangements, and you could lose your travel investment and/or have to pay more money to correct the situation. THE PURCHASE OF TRAVEL INSURANCE IS HIGHLY RECOMMENDED ON ALL TRIPS.

EMERGENCY EVACUATION COVERAGE: For the convenience of our travelers, Classic Escapes provides a complimentary Medical Insurance Plan during your trip via Travel Guard Group, Inc. This includes:

- Emergency evacuation insurance up to \$100,000.
- Up to \$25,000 medical, and up to \$500 dental expense coverage subject to the terms and limitations of the insurance policy.
- 24-hour worldwide travel and medical assistance.

Medical Plan (926801)

Please click here to view the complete coverage of details.

https://webservices.travelguard.com/Product/FileRetrieval.aspx?CountryCode=US&StateCode=AL&ProductCode=926801&PlanCode=NW&FileType=PROD_PLAN_GM

TERMS & CONDITIONS

TOUR OPERATOR: Classic Escapes acts as a tour operator/travel agent only. Classic Escapes does not own, operate, manage, or control any independent suppliers of services and is not liable for their acts or omissions. Classic Escapes' obligations to you are to make travel bookings on your behalf and to arrange relevant contracts between you and other travel service providers. We have no responsibility for these services, nor do we have the authority to make any warranty or representation regarding their standard. Requests cannot be guaranteed. All bookings are subject to the terms and conditions and limitations of liability imposed by these travel service providers. You understand that your legal recourse is against the specific provider, not Classic Escapes. Conditions can change rapidly in a country at any time. It is your responsibility to check the USA Government Travel advisories for your intended destination at <https://travel.state.gov/content/travel.html>.

RESPONSIBILITY OF THE COMPANY: We always do our best to make sure your travel arrangements are satisfactory. However, Classic Escapes and its employees, shareholders, subsidiaries, affiliates, officers, directors, successors, agents, and assigns do not own or operate any third-party entity that provides goods and services for your travel, including without limitation lodging facilities, airline, vessel, motorcoach, or other transportation companies, local ground operators, providers, food service providers, etc. All such persons and entities are independent contractors and are in no way affiliated to Classic Escapes. We are not liable for any delays or additional costs incurred by the Traveler as a result of any actions or occurrences by any of the foregoing third-party entities.

LIABILITY: Classic Escapes is not liable for any negligent or willful act or failure to act of any travel service provider or of any third party.

Because Classic Escapes does not have the right to control the operations of such travel service provider or any third party, you agree that Classic Escapes is not liable for any personal injury or property damage which may arise out of these services. Classic Escapes hereby disclaims any liability whether based on contract, tort, strict liability or otherwise, including without limitation liability for any direct, punitive, special consequential, incidental or indirect damages, in connection with the goods or services provided by any supplier booking through Classic Escapes, including without limitation liability for any act, error, omission, injury, loss, accident, delay or irregularity which may be incurred through the fault, negligence, willful acts, omissions or otherwise of such travel service provider or any third party, or their respective employees, agents, servants, or representatives, including, without limitation, their failure to deliver or their partial or inadequate delivery of services, their cancellation and refund policies, fuel increases, bankruptcy or cessation of operations and other matters outside of Classic Escapes' control, and you hereby exonerate Classic Escapes from any liability with respect to the same.

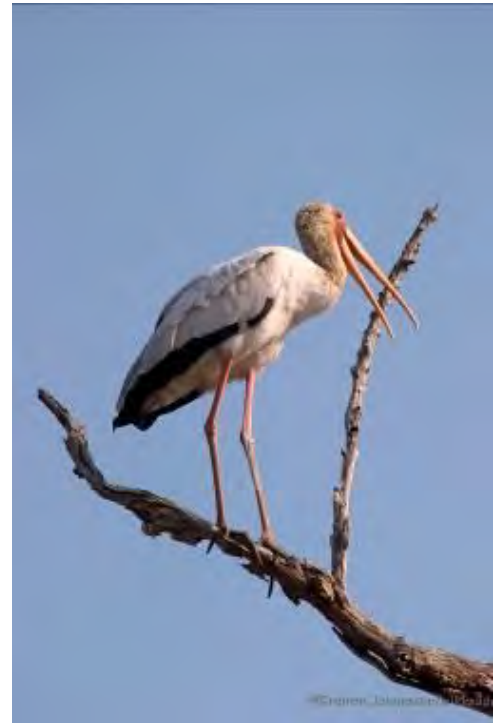
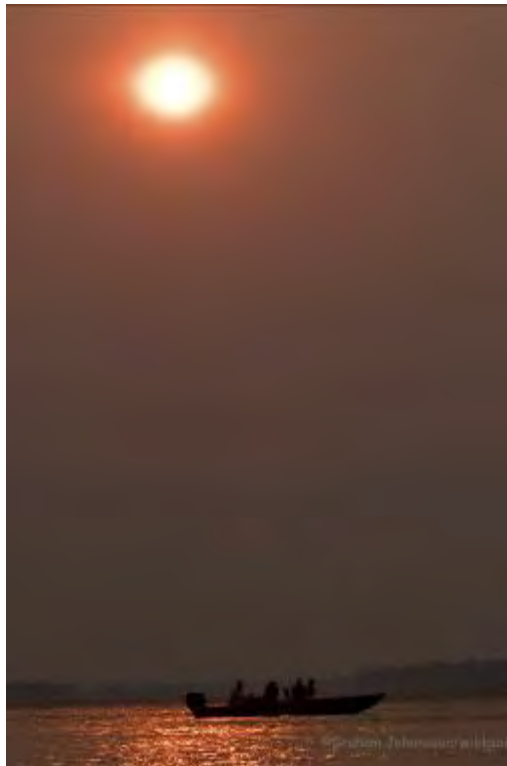
FORCE MAJEURE: Classic Escapes will not be in breach of these terms and conditions or otherwise be liable to you, for any failure or delay in performing an obligation under this Agreement that is due to any of the following causes, to the extent beyond its reasonable control: acts of God, accident, riots, war, terrorist act, illness, disease, epidemic, pandemic, quarantine, civil commotion, breakdown of communication facilities, including web host and internet service provider, breakdown or malfunction of equipment, destruction of or serious damage to facilities, natural catastrophes including, but not limited to extreme weather events, floods and volcanic eruptions, governmental acts or omissions, changes in laws or regulations, national strikes, fire, explosion, generalized lack of availability of raw materials or energy, and any other unforeseen circumstance which is beyond the control of Classic Escapes. THE PURCHASE OF TRAVEL INSURANCE IS HIGHLY RECOMMENDED ON ALL TRIPS.

REFUSAL OF SERVICE: Service providers reserve the right to refuse service to travelers at their sole discretion, including, without limitation, if the traveler: (i) lacks proper documentation for the country of destination; (ii) has a contagious disease; (iii) is under the influence of alcohol, drugs, or narcotics; and/or (iv) manifests disruptive and/or unruly behavior. Classic Escapes assumes no liability for the acts of the service provider in refusing service.

ELECTRONIC OR HANDWRITTEN SIGNATURE: Both parties agree that you may acknowledge and agree to these Terms: (i) electronically; (ii) by handwritten signature; (iii) by any other electronic means, including, without limitation, via email acceptance of these Terms; or (iv) by your implied consent deemed via your actions, which shall include without limitation the payment of the invoice in part or in full or your use of the services provided by Classic Escapes or any other travel supplier related to your booking. All such means will be deemed to constitute effective acknowledgement and execution of this Agreement and shall be sufficient to bind the parties to the terms and conditions of this Agreement.

RESERVATION OF RIGHTS: We reserve the right, in our sole discretion, to change these Terms and Conditions at any time. Updated versions of the Terms will be provided to you, will be posted on our website, and are effective immediately on posting.

GOVERNING LAW: The construction, validity, and performance of these Terms and any disputes between the parties shall be governed by and construed according to the laws of the State of New York, without giving effect to its conflict of law principles, and any federal laws applicable therein. Both parties submit to the exclusive jurisdiction of the courts of the State of New York with respect to any legal proceedings relating to these Terms.



SAFARI AIR LUGGAGE RESTRICTIONS ON PROFLIGHT FLIGHTS

It is of vital importance that all guests traveling to Zambia strictly adhere to the luggage limits and regulations as stipulated below.

| | |
|--|--|
| LUGGAGE WEIGHT LIMIT PER PERSON * | In Zambia, only one bag is allowed not to weigh more than 23 kgs. (50.70 lbs.) and one personal item. |
| LUGGAGE TYPE | Soft-sided bags – no hard-shelled bags, wheels or frames allowed. |
| LUGGAGE DIMENSIONS** | The total dimension of each checked in bag must not exceed 157 cm/61 inches. - add the length, width, and height of your luggage to obtain its total dimensions. |

Please note:

*This is the total weight including both luggage and hand luggage/camera equipment. This is a safety requirement due to the sensitive weight and balance checks on the small aircraft and must be strictly adhered to. Travelers who require additional luggage must pre-book and pay for this on confirmation of the reservation. We would like to remind you that laundry services are available in all camps and lodges.



****Due to limited space in the aircraft cabin, hand baggage must be placed in the floor space under the seat in front of you (exc. Exit Rows) and is strictly limited to 5 kilos (11 lbs.). This allowance includes ladies' handbags, laptop bags, etc.**



SOFT-SIDED BAGS PROFFERED



HARD-SIDED BAGS NOT PREFERRED

HANDLING OF INCORRECT LUGGAGE ON ARRIVAL

The carriage of excess baggage is at the sole discretion of the Company after taking into consideration the aircraft being used and the number of passengers booked. When excess baggage is carried it will be charged at the prevailing rate. Excess luggage is charged at USD \$4.00 per kilogram (2.2 lbs.). Guests who are unable to depart on the scheduled charter will be given the option to book a private charter at additional costs to be paid directly prior to departure and subject to the availability of aircraft at the time of booking these flights. No refunds on the costs paid for scheduled charters which were missed due to their incorrect luggage and/or accommodation not provided due to this delay will be provided.

ASSISTANCE WITH BAGGAGE PRIOR TO ARRIVAL

Should guests be travelling with the incorrect luggage and require assistance with storage (which we offer at no additional cost) or transportation to their point of departure from Zambia (transportation costs apply), this can be arranged provided this has been brought to our attention prior to their arrival in Zambia, preferably at the time of final booking confirmation.

RESERVATION FORM

NORTH CAROLINA ZOO SOCIETY~ ZAMBIA

24AFZ0613/NCZS

Enclosed is my deposit for \$ _____ (\$3,000 per person for the main trip and \$1,100 for the post-extension) to hold _____ place(s) on the classic safari to Zambia departing June 13, 2024. Cost is \$14,995 per person, double occupancy, land only.

Final payment due date is **March 10, 2024**

Please make check payable to CLASSIC ESCAPES, 191 W Poplar Street, Floral Park, NY 11001 OR

Charge deposit to ☐ MasterCard ☐ Visa ☐ American Express ☐ Discover

(Credit Card Authorization form needs to be completed and returned to Classic Escapes via mail or fax to 718-204-4726)

Deposits can be made by credit card; however, **all final payments are required to be made by check or money order only.**

Please note that a copy of your passport will be required to complete your reservation, showing the page with your photograph. A passport must be valid for at least 6 months after the return of your trip.

1) NAME (As appears on passport): ☐ Mr. ☐ Mrs. ☐ Ms. _____

Passport No. _____ Green Card No. _____ Expiration Date _____ Nationality _____

2) NAME (As appears on passport): ☐ Mr. ☐ Mrs. ☐ Ms. _____

Passport No. _____ Green Card No. _____ Expiration Date _____ Nationality _____

STREET ADDRESS: _____

CITY: _____

PHONES: HOME: () _____ OFFICE: () _____ MOBILE: () _____

E-MAIL ADDRESS: _____ FAX: () _____

☐ I certify that I have not recently been treated for, nor am I aware of any physical or other condition or liability that would create a hazard to myself or the other members of this tour.

☐ The two of us above are sharing a room and, where possible, would like a room with: ☐ ONE ☐ TWO Beds (Make one selection only)

☐ I am sharing with _____ (form sent separately)

☐ I need assistance in securing a roommate. I understand if Classic Escapes cannot locate one for me by final payment date, I agree to pay the additional single. I prefer to share with: ☐ Smoker ☐ Non-smoker

I desire single accommodations, if available, and will pay the single supplement additional cost of:

☐ \$4,995 for the main trip ☐ \$1,395 for the Victoria Falls post-extension

I/We wish to participate in the optional extension(s) at an additional per person cost of:

☐ \$5,295 for the Victoria Falls post-extension

CLASSIC ESCAPES CAN ASSIST WITH INTERNATIONAL FLIGHT ARRANGEMENTS FROM ANY US CITY.
PLEASE CONTACT US FOR FURTHER INFORMATION

All rates quoted are based on tariffs and the value of foreign currencies in relation to the U.S. dollar in effect as of October 31, 2022, and are subject to change. A refund of the deposit is not possible. A refund is made less any cancellation charges levied in accordance with the policy outlined in the accompanying Conditions of Travel. **WE STRONGLY RECOMMEND THAT YOU OBTAIN TRAVEL INSURANCE. RESERVATIONS ARE ACCEPTED SUBJECT TO TOUR CONDITIONS AND WILL BE CONFIRMED ONLY IF ACCOMPANIED BY COMPLETED FORM SIGNED BY THE TOUR PARTICIPANT(S).**

SIGNATURE: _____ DATE: _____

SIGNATURE: _____ DATE: _____

CLASSIC ESCAPES INC.
191 W Poplar Street,
Floral Park, NY 11001.
Phone: 718-280-5000
Email: Info@classicescapes.com

(We recommend that you keep a copy of your selections as noted above for your future reference)



191 W Poplar Street, Floral Park, NY 11001
T: (718) 280-5000; (800) 627-1244
F: (718) 204-4726
E: info@classicescapes.com

NORTH CAROLINA ZOO SOCIETY
ZAMBIA
JUNE 13 TO 26, 2024

CREDIT CARD PAYMENT AUTHORIZATION

Please Note: If you wish to charge your deposit to Visa, MasterCard, American Express or Discover, this authorization form MUST be completed and returned to us along with your reservation form before we can process your application.

I authorize (Classic Escapes Inc.) to charge my VISA/MASTERCARD/DISCOVER/AMEX listed below:

Name appearing on credit card _____

Card number _____ Expiration date _____

Card Verification Number* _____ Card Type _____

Billing address of credit card _____

Amount of transaction _____

Services rendered/Items purchased _____

Phone number _____

Signature _____ Date _____

***How To Locate Your Card Verification Number:**

(Visa, MasterCard, Discover: Locate the credit card number on the back of the card above the signature box. Enter the 3-digit number which follows the credit card number. **American Express:** Enter the 4-digit number found directly above and to the right of the credit card number.)

I understand that all rates quoted on this tour I'm making a payment on are based on tariffs and value of foreign currencies in relation to the U.S. dollar in effect as October 31, 2022 and are subject to change Cancellations are only effective on receipt of written notification. The following per person fees are applicable on this tour:

- Up to 6 months prior to departure (December 16, 2023), \$500 per person administrative fee, plus \$1,000 non-refundable deposits given to overseas suppliers.
- 6 months to 96 days prior to departure (December 17, 2023 to March 9, 2024), \$300 per person administrative fee, plus \$2,000 non-refundable deposits given to suppliers.
- 95 days to 76 days prior to departure (March 10, 2024 to March 29, 2024), deposit is forfeited.
- 75 days to 60 days prior to departure (March 30, 2024 to April 14, 2024), 25% refund is possible.
- 59 days or less prior to departure (April 15, 2024), no refund is possible.

These cancellation fees are also in addition to any fees imposed by airlines.

PLEASE NOTE: At times, our bank requires photocopy of credit card (both sides) and driver's license or document showing signature of cardholder, in order to process the charge. While it is not required at this time that you include these materials with your deposit, if our bank requests it,